

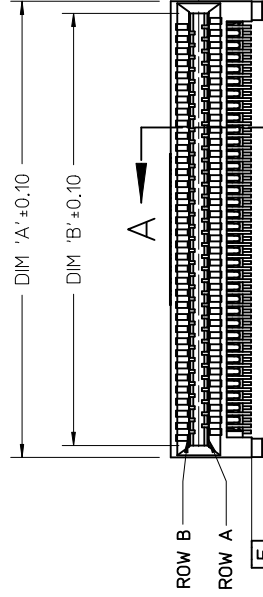
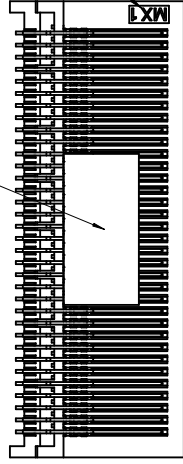


**THE DATASHEET OF**  
**75586-0009**

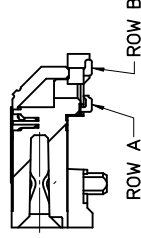
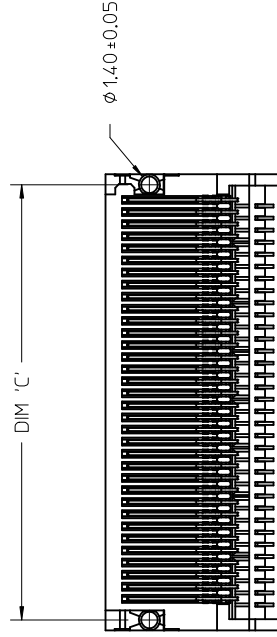
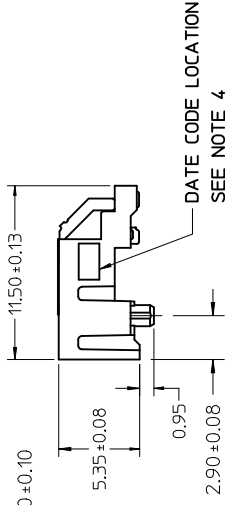


VACUUM PICK & PLACE AREA  
(DOES NOT NEED TO BE REMOVED)

MOLD CAVITY ID  
FOR REFERENCE ONLY

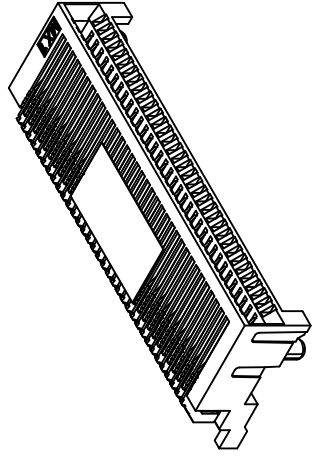


SEE NOTE 3



SECTION A-A

68 CIRCUIT ASSEMBLY SHOWN



CIRCUIT SIZE	ITEM NUMBER
26	75586-0004
26	75586-0009
36	75586-0003
36	75586-0008
38	75586-0010
38	75586-0011
50	75586-0001
50	75586-0006
68	75586-0002
68	75586-0007

NOTES

1. MATERIAL:

HOUSING - HIGH TEMPERATURE  
UL 94V-0, BLACK

TERMINALS - COPPER ALLOY

2. PLATING:

OPTION 1

CONTACT AREA - 0.38  $\mu$ m MIN

SOLDER FOOT AREA - 2.54 -

OPTION 2

CONTACT AREA - 0.76  $\mu$ m MIN

SOLDER AREA - 2.54 -5.09  $\mu$ m

TERMINAL SOLDER FEET TO BE

FRONT HOUSING STAND OFF (DA

4. DATE CODE: 4 DIGIT (3 DIGIT DA

5. CIRCUIT IDENTIFIER: SEE APPROPRI

LOCATION OF PIN 1

6. TO BE USED WITH EXTERNAL CA

AND GUIDE FRAMES (74540 & 747

7. TESTER/ANALYZER CABLES AVA

8. PACKAGED PER PACKAGING SPEC

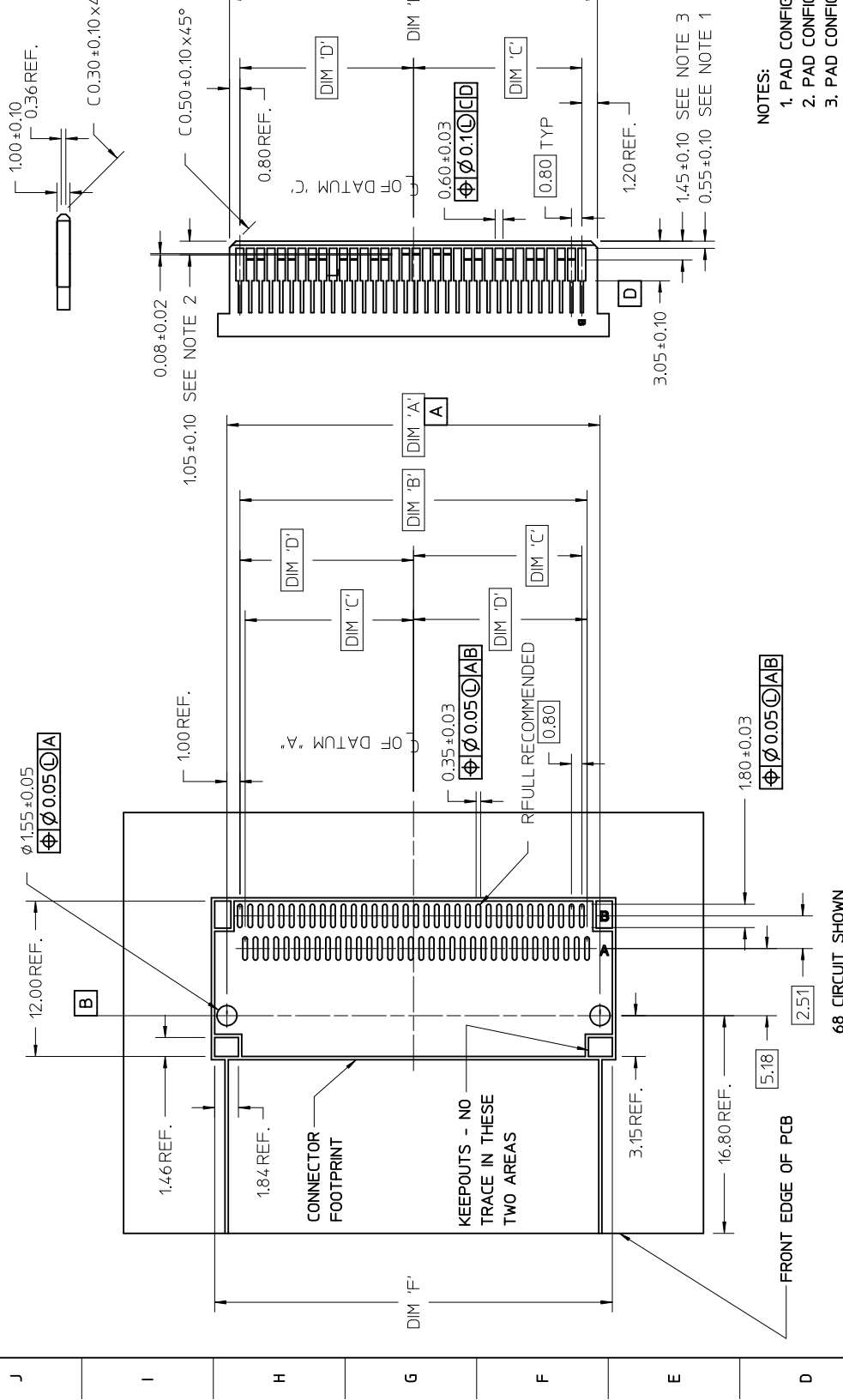
9. CONFORMS TO PRODUCT SPECIFIC

10. THIS PART CONFORMS TO CLASS

SPECIFICATION PS-45499-002.

QUALITY SYMBOLS	GENERAL TOLERANCES (UNLESS SPECIFIED)	DIMENSION STYLE
= 0	4 PLACES ± --- INCH	MM ONLY
= 0	3 PLACES ± ---	DRAWN BY KREGNIER 07/28/04
= 0	2 PLACES ± 0.13	CHECKED BY JLONG 07/29/04
= 0	1 PLACE ± 0.25	APPROVED BY RNELSON 07/30/04
	0 PLACE ±	MATERIAL NO. SEE CHART
	ANGULAR ±1/2°	SIZE THIS DRAWING CONTAINED AND SH
	DRAFT WHERE APPLICABLE MUST REMAIN WITHIN DIMENSIONS	

REV	DESCRIPTION
02	REVISED NOTE 2
	EC NO: UCP2012-4064
	DRWN:IMCLELL 2012/06/26
	CHKD: APPR:MBANAKIS 2012/06/28



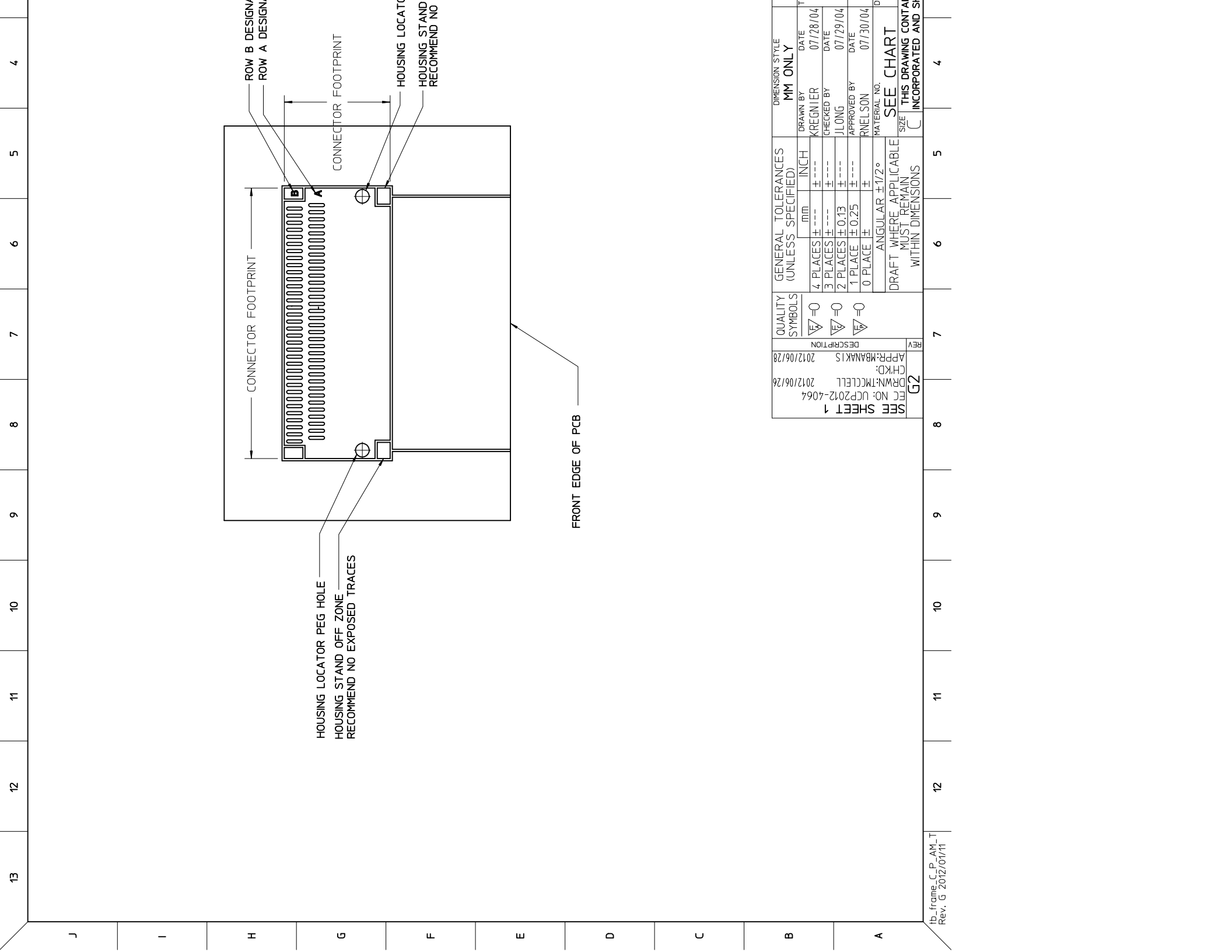
- NOTES:
1. PAD CONFIG
  2. PAD CONFIG
  3. PAD CONFIG (HIGH SPEED)
  4. FOR PIN AS (1ST, 2ND, 5. MINIMUM ST WIDER THAN FOOT PRINT
  5. MINIMUM ST WIDER THAN FOOT PRINT
  6. SEE 74540

CIRCUIT SIZE	TERM/SIDE 'N'	DIM 'A'	DIM 'B'	DIM 'C'	DIM 'D'	DIM 'E'	DIM 'F'
26	13	12.00	10.00	4.60	5.00	11.60	13.90
36	18	16.00	14.00	6.60	7.00	15.60	17.90
38	19	16.80	14.80	7.00	7.40	16.40	18.70
50	25	21.60	19.60	9.40	9.80	21.20	23.50
68	34	28.80	26.80	13.00	13.40	28.40	30.70

68 CIRCUIT SHOWN

QUALITY SYMBOLS	GENERAL TOLERANCES (UNLESS SPECIFIED)	DIMENSION STYLE
$\nabla = 0$	4 PLACES ± --- INCH	MM ONLY
$\nabla = 0$	3 PLACES ± ---	DRAWN BY KREGNIER
$\nabla = 0$	2 PLACES ± 0.13	CHECKED BY JLONG
	1 PLACE ± 0.25	DATE 07/28/04
	0 PLACE ±	DATE 07/29/04
	ANGULAR ±1/2°	DATE 07/30/04
	DRAFT WHERE APPLICABLE MUST REMAIN WITHIN DIMENSIONS	MATERIAL NO. SEE CHART

REV	DESCRIPTION	DATE
G2	APP:MBANAKIS 2012/06/28	2012/06/28
	CHKD: DRWN:IMC/LELL 2012/06/26	
	EC NO: UCP2012-4064	
	SEE SHEET 1	



QUALITY SYMBOLS		GENERAL TOLERANCES (UNLESS SPECIFIED)		DIMENSION STYLE	
	= 0	mm	INCH	MM ONLY	
	= 0	4 PLACES ± ---	± ---	DRAWN BY	DATE
	= 0	3 PLACES ± ---	± ---	KREGNIER	07/28/04
		2 PLACES ± 0.13	± ---	CHECKED BY	DATE
		1 PLACE ± 0.25	± ---	JL LONG	07/29/04
		0 PLACE ±	± ---	APPROVED BY	DATE
		ANGULAR ±1/2°	±	RNELSON	07/30/04
DRAFT WHERE APPLICABLE MUST REMAIN WITHIN DIMENSIONS		MATERIAL NO.		SEE CHART	
				SIZE THIS DRAWING CONTAINED AND INCORPORATED AND SI	

REV	DESCRIPTION
G2	EC NO: UCP2012-4064 DRWN:TMCCLELL 2012/06/26 CHKD: APR:MBANKS 2012/06/28

## Looking for pricing, stock, or lifecycle information?

Click below to explore more details on WIN SOURCE:

 [View 75586-0009 on WIN SOURCE](#)

 [Molex, LLC Information](#)

## Optimize Your Supply Chain with WIN SOURCE Solutions

-  Global Sourcing Solution
-  Obsolete Management
-  Cost Control Management
-  Shortage Management
-  Alternative Solution
-  Excess Inventory Management