



THE DATASHEET OF
66527-062LF

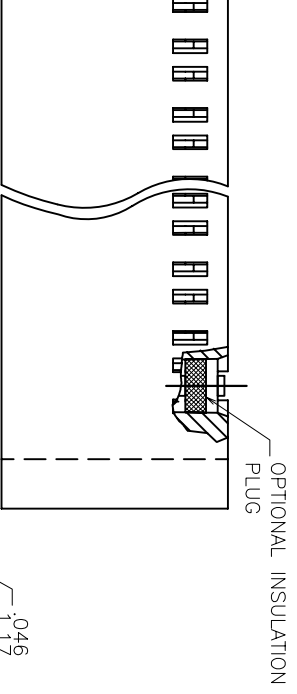


2 | 3

4 |

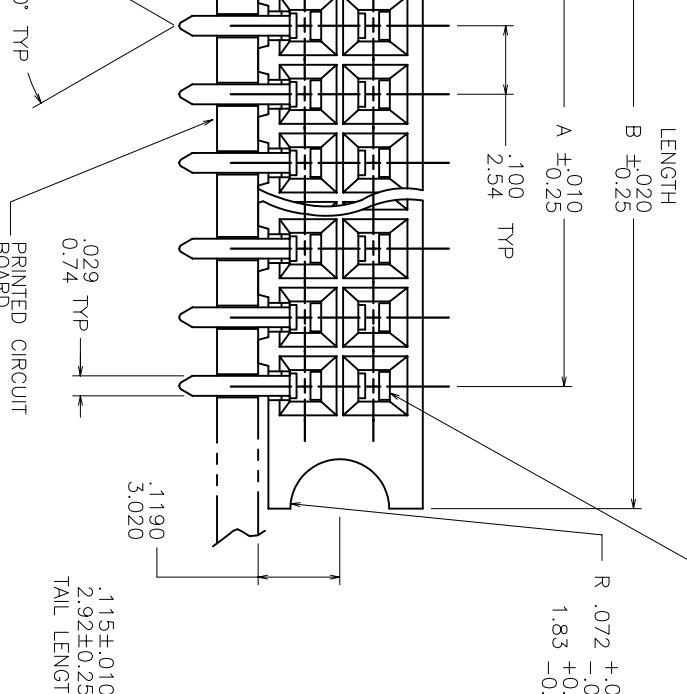
5 |

6



OPTIONAL INSULATION PLUG

OPTIONAL INSULATION PLUG

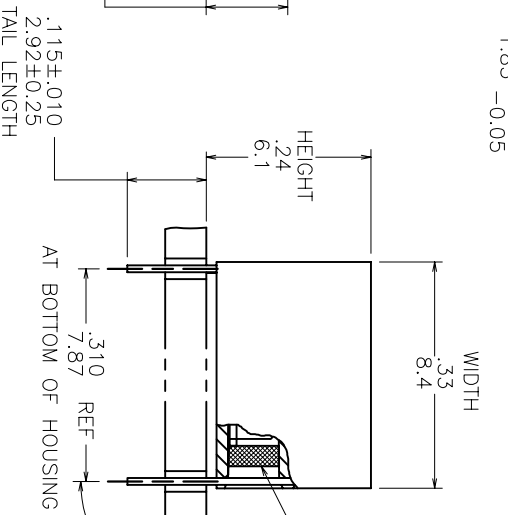


PRINTED CIRCUIT BOARD

046 SQUARE CONTACT
1.17 OPENING TYP

R .072 +.003
- .002 TYP

1.83 +0.08
-0.05



WIDTH .33
8.4

HEIGHT 2.4
6.1

90° ±5° TYP

OPTIONAL INSULATION PLUG

SEE TABLE

AT BOTTOM OF HOUSING

2 |

3 |

4 |

5 |

6

mat'l. code		surface		tolerance		projection		product family	
---		ISO 1802		ISO 406 ISO 701		INCH/MM		CARD CONN.	
ltr	ec'n no	dr	date	tolerances unless otherwise specified		scale 4:1		title	
N	V61633	ERK	9/17/90					GUIDE PIN	
P	V70994	JM	10/19/97	linear		XXX 1:100/XXX1:3		CARD CONNECTOR	
R	V02523	AZ	10/24/00	C ±.2°		XXX 4:100/XXX4:10			
S	V21783	CGD	11/18/02	C.DAILY		1:1/18/02			
T	M05-0113	MHT	6/14/05	H.SUNDRY		1:1/18/02			
U	M07-0133	MHT	2/26/07	H.SUNDRY		1:1/18/02			
V	M08-0233	MHT	8/14/08	H.SUNDRY		1:1/18/02			
Sheet	revision	V	V	V	V	V	V		
index	sheet	1	2	3	4	5	6		



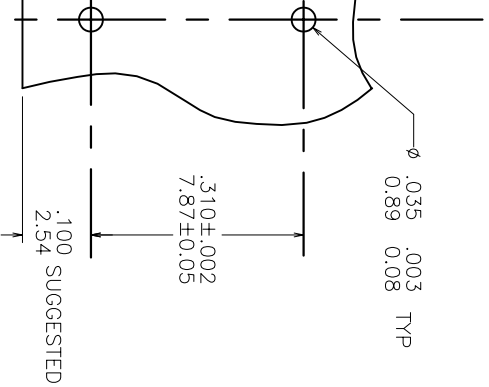
dwg no
66527

sheet 1 of 6

Product Customer Drawing

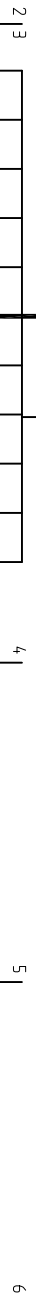
A3

.100±.003 TYP
 2.54±0.08
 NON-ACCUMULATIVE



3. MARK "FCI", FCI PART NUMBER AND DATE CODE.
 LEGIBLE ON TUBE LABEL.
4. APPLICATION INFORMATION:
 A. RECOMMENDED MOUNTING HOLE PATTERN IS SHOWN IN FIGURE "1"
 B. ALL MATING PINS TO BE .025/.64 SQUARE ON TRUE CENTER OF GIVEN TERMINAL SPACINGS WITHIN .015/0.38 DIA.
 C. SUGGESTED MATING PIN LENGTH .350±.020/8.89±0.51
5. MARK IN .060/1.52 HIGH LETTERS.(CONTRASTING COLORS) - 9113 4445
 FCI XXXX
 DATE CODE
6. .003/0.08 THICK TERMINAL SPRING.
7. PACKAGING: STANDARD 24" LONG TUBES.
8. 550mm LONG SPECIAL SHORT TUBE PACKAGING:
 ADD SUFFIX "A" TO PART DASH NUMBER. EXAMPLE: 66527-001A
9. ADD "LF" SUFFIX AT THE END OF PART NUMBER FOR LEAD FREE OPTION.
10. THIS PRODUCT MEETS EUROPEAN UNION DIRECTIVES AND OTHER COUNTRY REGULATION AS DESCRIBED IN GS-22-008.
11. THE HOUSING WILL WITHSTAND EXPOSURE TO 260°C PEAK TEMPERATURE FOR 15 SECONDS IN A WAVE SOLDER APPLICATION WITH A 1.5mm MINIMUM THICK CIRCUIT BOARD. SEE APPLICATION NOTES/PROCEDURES IF THEY ARE AVAILABLE.
12. PLATING OPTIONS:
 MAY BE EITHER GOLD OR GXT PLATED AT MANUFACTURER'S OPTION.

TEMPERATURE NYLON
 .010/0.25 THICK
 U. HEAT TREATED
 DUPLICATE :
 INCH/0.76 MICRON GOLD OR GXT
 MICRON/1.27 MICRON NICKEL
 CT AREA
 .100u"/2.54um PURE TIN MIN
 u"/1.27um NICKEL
 NG: GOLD FLASH



mat'l code		surface		ISO 1302		tolerance		projection		product family	
lit		ecn no		dr		date		ISO 406		CARD CONN.	
V								INCH/MM		GUIDE PIN	
		angles		linear		linear		scale 4:1		CARD CONNECTOR	
		O'±.2'		XXX 1.00/2X10.3		XXX 4.000/XXX0.061				dwg no	
		dr		C.DAILY		11/18/02		FCI		66527	
		enrg		H.SUNDY		11/18/02				sheet 2 of 6	
		chr		H.SUNDY		11/18/02				size	
		apnd		H.SUNDY		11/18/02				A3	
sheet		revision								Product Customer Drawing	
index		sheet									

A DIM	B DIM	INSUL. PLUG	SPECIAL
000/101.60	4.358/110.69	NO	
100/104.14	4.458/113.23		
200/106.68	4.558/115.77		
300/109.22	4.658/118.31		
400/111.76	4.758/120.85		
500/114.30	4.858/123.39		
600/116.84	4.958/125.93		
700/119.38	5.058/128.47		
800/121.92	5.158/131.01		
900/124.46	5.258/133.55		
000/127.00	5.358/136.09		
100/129.54	5.458/138.63		
200/132.08	5.558/141.17		
300/134.62	5.658/143.71		
400/137.16	5.758/146.25		
500/139.70	5.858/148.79		
600/142.24	5.958/151.33		
700/144.78	6.058/153.87		
800/147.32	6.158/156.41		
900/149.86	6.258/158.95		
000/152.40	6.358/161.49		
100/154.94	6.458/164.03		
200/157.48	6.558/166.57		
300/160.02	6.658/169.11		
400/162.56	6.758/171.65	NO	

OBSOLETE

mat'l code		surface		ISO 1302		tolerance		ISO 406		projection		product family	
—		✓		ISO 1701		ISO 1701		INCH/MM		CARD CONN.		CARD CONN.	
lit	ecm no	dr	date	references unless otherwise specified		linear		XX 1/16/XX03		INCH/MM		title	
V				or ±.2°		linear		XXX 1/16/XXX03		scale 4:1		GUIDE PIN	
				C.DAILY		11/18/02		FCI		dwg no		CARD CONNECTOR	
				H.SUNDY		11/18/02				sheet 4 of 6		size	
				H.SUNDY		11/18/02				66527		A3	
				H.SUNDY		11/18/02				Product Customer Drawing			
sheet	revision												
index	sheet												

2 |

3 |

4 |

5 |

6 |

2 | 3

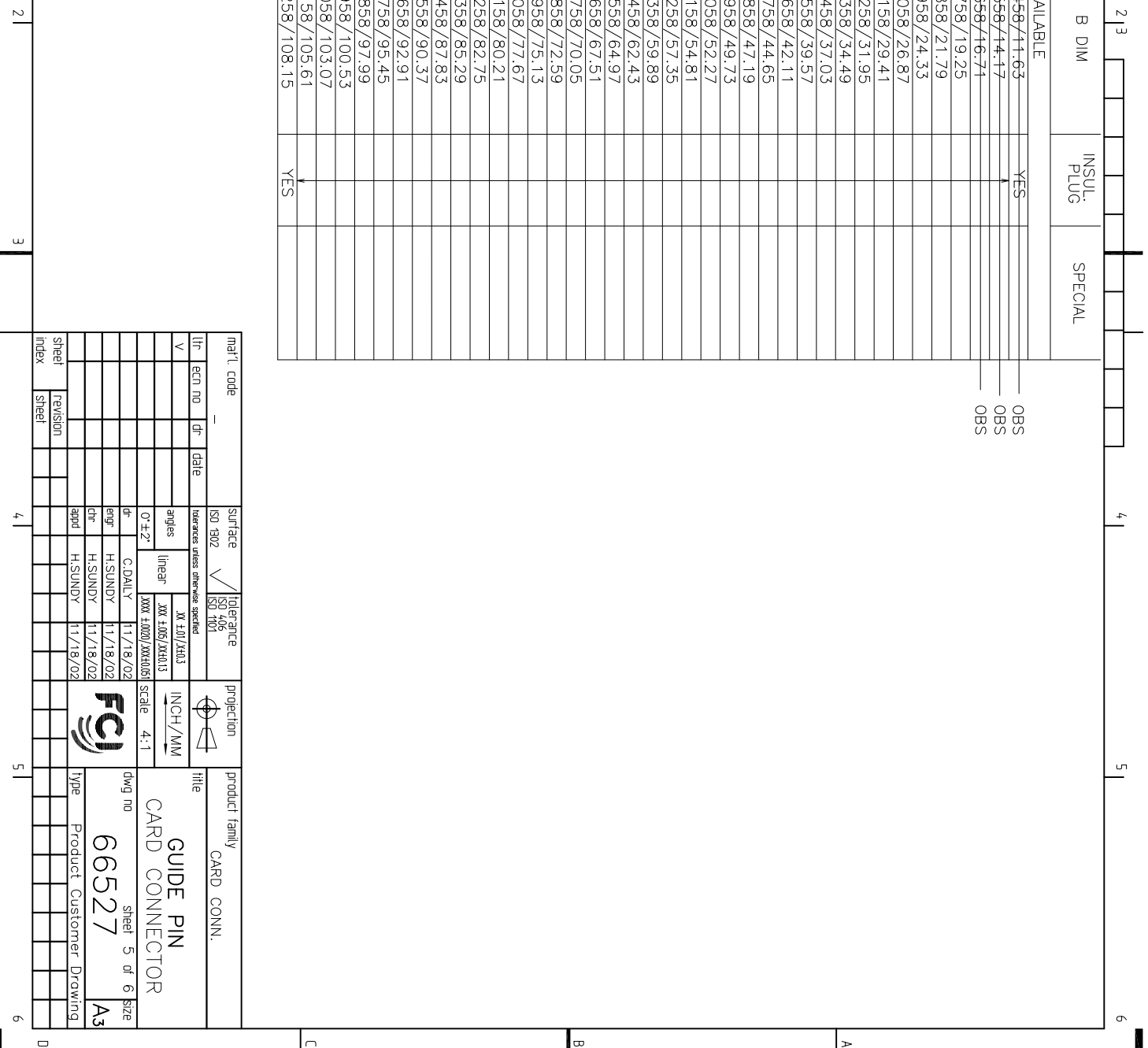
4 |

5 |

6 |

A DIM	B DIM	INSUL-PLUG	SPECIAL
UNAVAILABLE			
.100/2.54	.458/11.63	YES	
.200/5.08	.558/14.17		OBS
.300/7.62	.658/16.71		OBS
400/10.16	.758/19.25		OBS
500/12.70	.858/21.79		
600/15.24	.958/24.33		
700/17.78	1.058/26.87		
800/20.32	1.158/29.41		
900/22.86	1.258/31.95		
1.000/25.4	1.358/34.49		
1.100/27.94	1.458/37.03		
1.200/30.48	1.558/39.57		
1.300/33.02	1.658/42.11		
1.400/35.56	1.758/44.65		
1.500/38.10	1.858/47.19		
1.600/40.64	1.958/49.73		
1.700/43.18	2.058/52.27		
1.800/45.72	2.158/54.81		
1.900/48.26	2.258/57.35		
2.000/50.80	2.358/59.89		
2.100/53.34	2.458/62.43		
2.200/55.88	2.558/64.97		
2.300/58.42	2.658/67.51		
2.400/60.96	2.758/70.05		
2.500/63.50	2.858/72.59		
2.600/66.04	2.958/75.13		
2.700/68.58	3.058/77.67		
2.800/71.12	3.158/80.21		
2.900/73.66	3.258/82.75		
3.000/76.20	3.358/85.29		
3.100/78.74	3.458/87.83		
3.200/81.28	3.558/90.37		
3.300/83.82	3.658/92.91		
3.400/86.36	3.758/95.45		
3.500/88.90	3.858/97.99		
3.600/91.44	3.958/100.53		
3.700/93.98	4.058/103.07		
3.800/96.52	4.158/105.61		
3.900/99.06	4.258/108.15	YES	

mat'l code		surface		ISO 1302		tolerance		ISO 406		projection		product family	
—		ISO 1302		ISO 1302		ISO 406		ISO 406		ISO 1701		CARD CONN.	
titances unless otherwise specified		linear		XX F10/XX13		INCH/MM		title		GUIDE PIN		CARD CONNECTOR	
angles		C.DAILY		11/18/02		scale 4:1		dwg no		66527		sheet 5 of 6	
or ±.2°		H.SUNDY		11/18/02		type		Product Customer Drawing		A3		size	
dr		H.SUNDY		11/18/02		type		Product Customer Drawing		A3		size	
engr		H.SUNDY		11/18/02		type		Product Customer Drawing		A3		size	
chr		H.SUNDY		11/18/02		type		Product Customer Drawing		A3		size	
apnd		H.SUNDY		11/18/02		type		Product Customer Drawing		A3		size	
sheet		revision		sheet		revision		sheet		revision		sheet	
index		sheet		index		sheet		index		sheet		index	



Looking for pricing, stock, or lifecycle information?

Click below to explore more details on WIN SOURCE:

 [View 66527-062LF on WIN SOURCE](#)

 [Amphenol FCI Information](#)

Optimize Your Supply Chain with WIN SOURCE Solutions

-  Global Sourcing Solution
-  Obsolete Management
-  Cost Control Management
-  Shortage Management
-  Alternative Solution
-  Excess Inventory Management