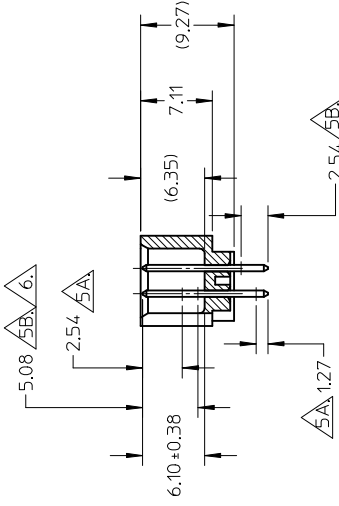
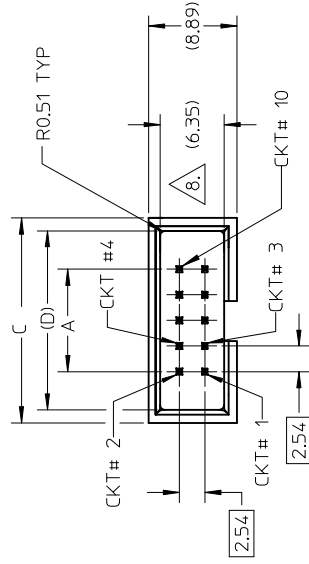


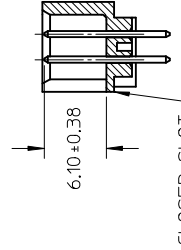


THE DATASHEET OF
702464001





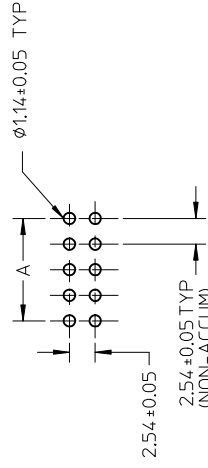
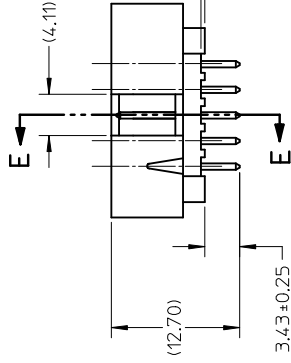
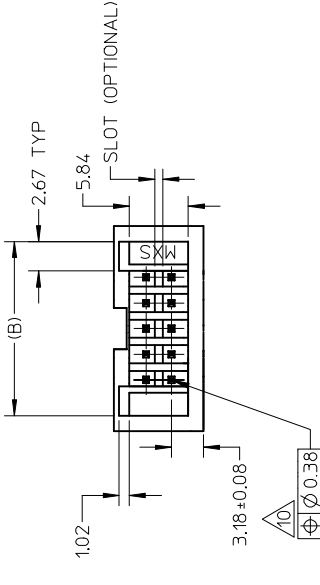
SECTION E-E



CLOSED SLOT

MOLEX IRELAND PRODUCTION ONLY

(OPTION)



RECOMMENDED PCB HOLE LAYOUT

NOTES:

1. PIN PUSHOUT FORCE
2. PIN SOLDERABILITY F
3. PRODUCT SPEC: PS--
4. WAFER TO BE FLAT
5. DIMENSIONS FOR PL
- 5A MEASURE POINT
- 5B MINIMUM COVERA
6. GOLD END OF PIN
7. FINISH:
 - 571 : 15 MICRO INCHE
 - 75 MICRO INCHE
 - BOTH OVER 50
- 574 : 30 MICRO INCHE
- 75 MICRO INCHE
- BOTH OVER 50
- 544 : 5 MICRO INCHE
- 75 MICRO INCHE
- BOTH OVER 50
- 573 : 20 MICRO INCHE
- 100 MICRO INCHE
- BOTH OVER 50
8. DIM AT THE CENT
- 5.9MM MIN. THIS :
9. MATERIAL:
 - HSG: GLASS FILL
 - PIN: 0.64MM SQ.
10. SOLDERTAIL POSI

QUALITY SYMBOLS =0 =0	GENERAL TOLERANCES (UNLESS SPECIFIED)	DIMENSION STYLE MM ONLY	SCALING NT	
	4 PLACES ± --- ± --- 3 PLACES ± --- ± --- 2 PLACES ± 0.20 ± --- 1 PLACE ± --- ± --- ANGULAR ± 3 °	DRAWN BY JENNIFER	DATE 1987/09/18	
	DRAFT WHERE APPLICABLE MUST REMAIN WITHIN DIMENSIONS	CHECKED BY RWONG	DATE 1987/09/18	TITLE SEE TABLE
	REV DESCRIPTION APPR:MLONG 2012/10/08 CHKD:SKANG 2012/08/06 DRWN:ATSEE 2012/07/20	APPROVED BY ALAMB	DATE 1987/09/18	MATERIAL NO. SEE TABLE SIZE A3 THIS DRAWING CONTAINS I INCORPORATED AND SHOUL

10 9 8 7 6 5 4 3

PART NUMBER	CKT SIZE	VOID CKT	DIM A	DIM B	DIM C	DIM D	VOID CKT, ONLY APPLY TO PLATING CODE
70246-08**	08	-	7.62	14.73	17.78	15.24	-
70246-10**	10	-	10.16	17.27	20.32	17.78	-
70246-12**	12	-	12.70	19.81	22.86	20.32	-
70246-14**	14	-	15.24	22.35	25.40	22.86	-
70246-16**	16	-	17.78	24.89	27.94	25.40	-
70246-20**	20	-	22.86	29.97	33.02	30.48	-
70246-24**	24	-	27.94	35.05	38.10	35.56	-
70246-26**	26	-	30.48	37.59	40.64	38.10	-
70246-30**	30	-	35.56	42.67	45.72	43.18	-
70246-34**	34	-	40.64	47.75	50.80	48.26	-
70246-40**	40	-	48.26	55.37	58.42	55.88	-
70246-44**	44	-	53.34	60.45	63.50	60.96	-
70246-50**	50	-	60.96	68.07	71.12	68.58	-
70246-1003	10	10	10.16	17.27	20.32	17.78	571

LEGEND:



PART NUMBER	PLATING OPTION
70246-**-01	571
70246-**-02	574
70246-**-04	544

D

C

B

A

J6 EC NO: S2013-0029 UPDATE NOTE #3, DRW:ATSEE 2012/07/20 CHK:D:SKANG 2012/08/06 APPR:MLONG 2012/10/08	QUALITY SYMBOLS ▴=0 ▽=0	GENERAL TOLERANCES (UNLESS SPECIFIED) mm INCH 4 PLACES ± --- ± --- 3 PLACES ± --- ± --- 2 PLACES ± 0.20 ± --- 1 PLACE ± --- ± --- ANGULAR ± 3 °	DIMENSION STYLE MM ONLY DRAWN BY DATE JENNIFER 1987/09/18 CHECKED BY DATE RWONG 1987/09/18 APPROVED BY DATE ALAMB 1987/09/18	MATERIAL NO. SEE TABLE SIZE THIS DRAWING CONTAINS INCORPORATED AND SHOULD BE
	DESCRIPTION REV	DRAFT WHERE APPLICABLE MUST REMAIN WITHIN DIMENSIONS	DRAFT WHERE APPLICABLE MUST REMAIN WITHIN DIMENSIONS	TITLE 1987/09/18

9 8 7 6 5 4 3

Looking for pricing, stock, or lifecycle information?

Click below to explore more details on WIN SOURCE:

 [View 702464001 on WIN SOURCE](#)

 [Molex, LLC Information](#)

Optimize Your Supply Chain with WIN SOURCE Solutions

-  Global Sourcing Solution
-  Obsolete Management
-  Cost Control Management
-  Shortage Management
-  Alternative Solution
-  Excess Inventory Management