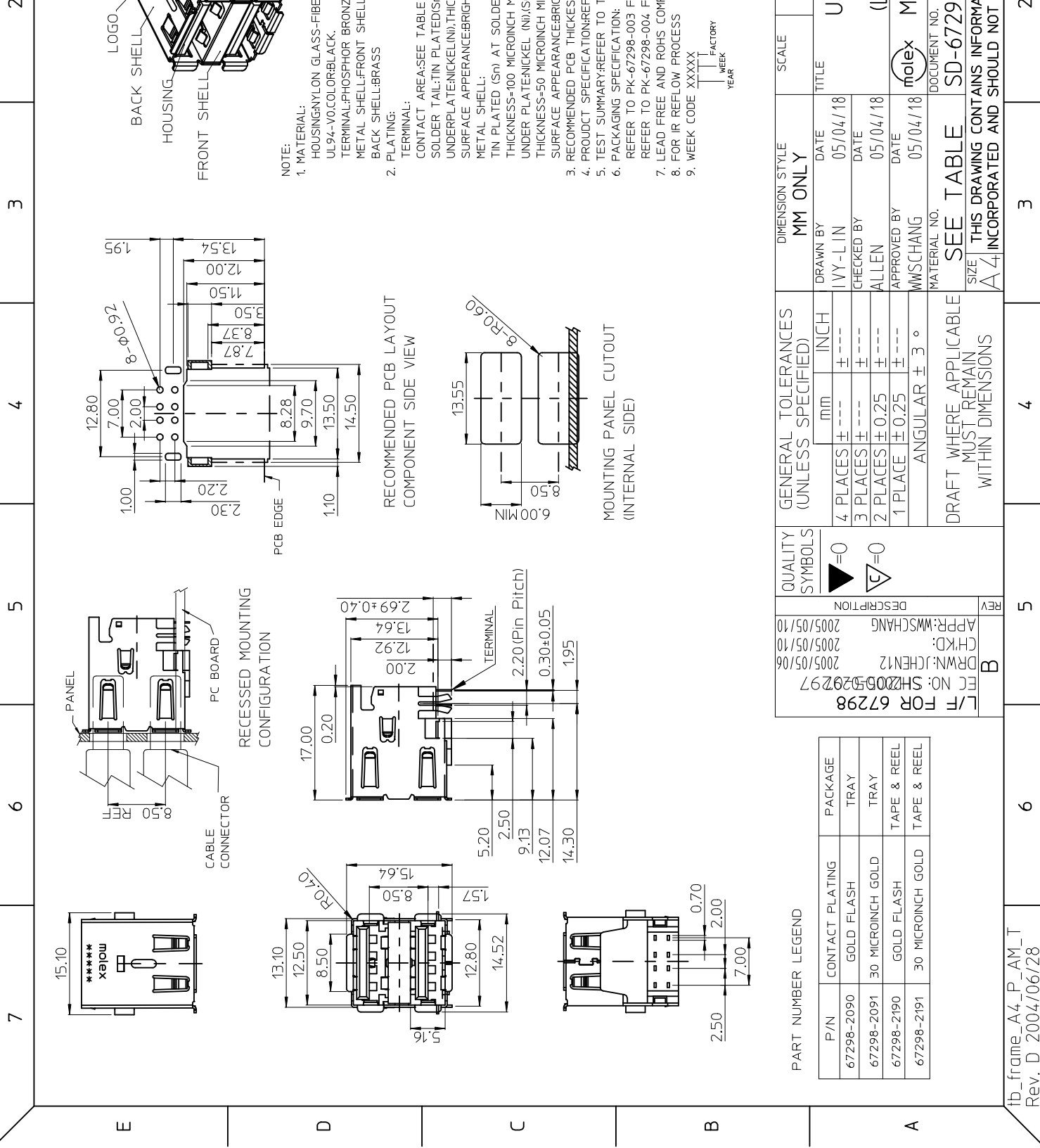




**THE DATASHEET OF
672982091**





ib_frame_A4_P_AM_T
Rev. D 2004/06/28

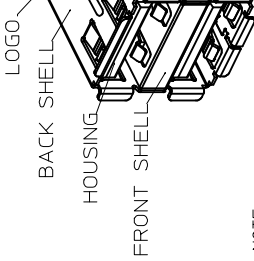
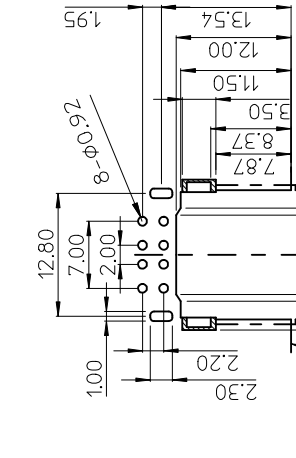
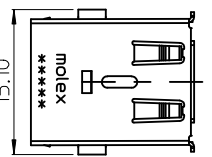
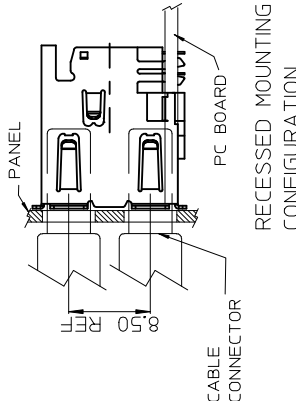
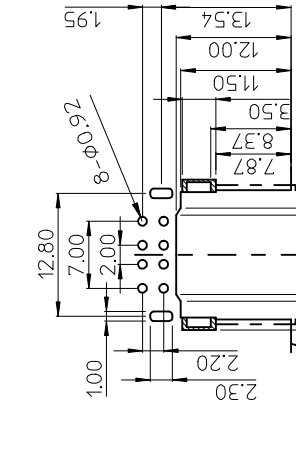
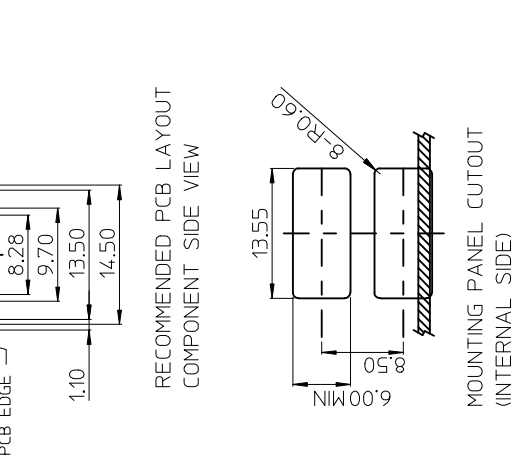
REV	DESCRIPTION
B	EC NO: SH2005529297 DRWN: JCHEN12 2005/05/06 CHKD: 2005/05/10 APP: WMSCHANG 2005/05/10

QUALITY SYMBOLS	GENERAL TOLERANCES (UNLESS SPECIFIED)
▶=0	mm ± ---
◻=0	INCH ± ---
	4 PLACES ± ---
	3 PLACES ± ---
	2 PLACES ± 0.25
	1 PLACE ± 0.25
	ANGULAR ± 3 °

DRAFT WHERE APPLICABLE MUST REMAIN WITHIN DIMENSIONS

GENERAL TOLERANCES (UNLESS SPECIFIED)	DIMENSION STYLE	SCALE
4 PLACES ± ---	MM ONLY	
3 PLACES ± ---	DRAWN BY	
2 PLACES ± 0.25	DATE	
1 PLACE ± 0.25	05/04/18	
ANGULAR ± 3 °	CHECKED BY	
	ALLEN	
	DATE	
	05/04/18	
	APPROVED BY	
	WMSCHANG	
	DATE	
	05/04/18	
	MATERIAL NO.	
	SEE TABLE	
	SD-67298	

THIS DRAWING CONTAINS INFORMATION THAT IS UNCLASSIFIED AND SHOULD NOT BE RELEASED TO THE PUBLIC



- NOTE:**
- MATERIAL:
HOUSING: NYLON GLASS-FIBRE UL94-V0 COLOR: BLACK.
TERMINAL: PHOSPHOR BRONZE METAL SHELL: FRONT SHELL: BRASS BACK SHELL: BRASS
 - PLATING:
TERMINAL:
CONTACT AREA: SEE TABLE
SOLDER TAIL: TIN PLATED (S)
UNDER PLATE: NICKEL (Ni)/SILVER (Ag)
SURFACE APPEARANCE: BRIGH METAL SHELL:
TIN PLATED (Sn) AT SOLDED THICKNESS: 100 MICROINCH Y UNDER PLATE: NICKEL (Ni)/SILVER (Ag) THICKNESS: 50 MICROINCH METAL SHELL:
SURFACE APPEARANCE: BRIGH
 - RECOMMENDED PCB THICKNESS
 - PRODUCT SPECIFICATION: REFER TO PK-67298-003 F
 - TEST SUMMARY: REFER TO T
 - PACKAGING SPECIFICATION: REFER TO PK-67298-004 F
 - LEAD FREE AND ROHS COMPLIANT
 - FOR IR REFLOW PROCESS
 - WEEK CODE XXXXX
- ↑ FACTORY
↑ WEEK
↑ YEAR

Looking for pricing, stock, or lifecycle information?

Click below to explore more details on WIN SOURCE:

 [View 672982091 on WIN SOURCE](#)

 [Molex, LLC Information](#)

Optimize Your Supply Chain with WIN SOURCE Solutions

-  Global Sourcing Solution
-  Obsolete Management
-  Cost Control Management
-  Shortage Management
-  Alternative Solution
-  Excess Inventory Management