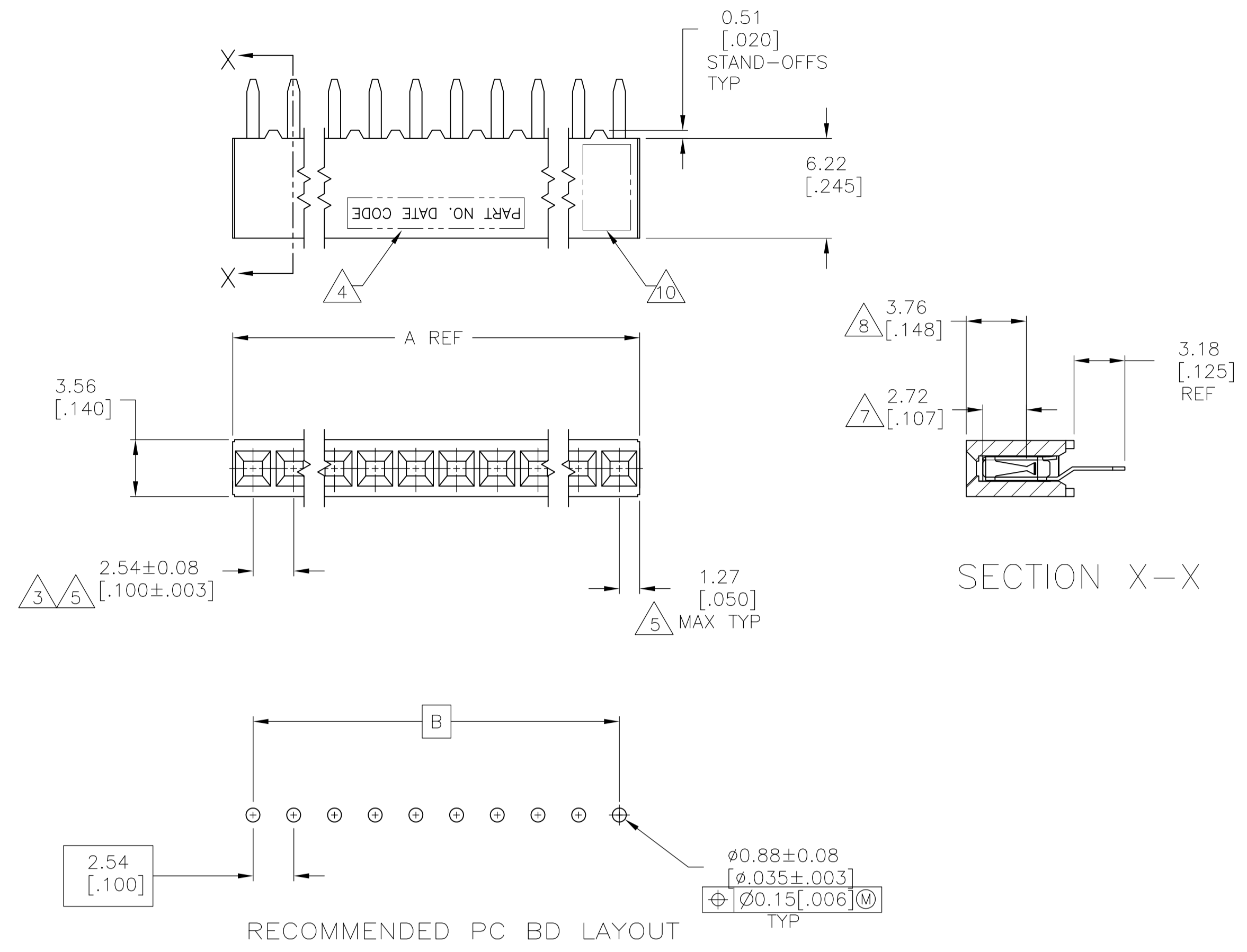




THE DATASHEET OF
5-535541-4





- 1 HOUSING: FLAME RETARDANT, GLASS FILLED, POLYESTER, COLOR: BLACK. CONTACT: PHOSPHOR BRONZE
- 2 CONTACT: DUPLEX PLATED 0.76µm[.000030] MIN GOLD IN CONTACT AREA, 3.81-7.62µm[.000150-.000300] BRIGHT TIN-LEAD ON LEADS ALL OVER 1.27µm[.000050] MIN NICKEL
- 3 THESE DIMENSIONS PERTAIN TO CAVITY CENTERLINES ONLY - NOT TO CONTACT LOCATIONS
- 4 PART NUMBER AND DATE CODE ARE MARKED IN APPROXIMATE LOCATION SHOWN, EITHER SIDE.
- 5 TOLERANCE IS NON-CUMULATIVE.
- 6 2 POSITION DATE CODE IS MARKED OPPOSITE SIDE OF TE CONNECTIVITY LOGO.
- 7 POINT-OF-MEASUREMENT DIMENSION FOR PLATING THICKNESS (INSIDE CONTACT BEAM).
- 8 POINT-OF-CONTACT DIMENSION.
- 9 NO PART NUMBER MARKING REQUIRED FOR THIS PART.
- 10 TE LOGO AND CSA LOGO ARE MOLDED INTO HOUSING.
- 11 CONTACT: DUPLEX PLATED 0.76µm[.000030] MIN GOLD IN CONTACT AREA, 3.81-7.62µm[.000150-.000300] MATTE TIN ON LEADS ALL OVER 1.27µm[.000050] MIN NICKEL
- 12 ROHS 2002/95/EC COMPLIANT.

| | | | | | | | | |
|----|---|---------------|----------------|-------------|-------------|-------------|----|------------|
| 6 | 9 | OBSOLETE | | 2.54 [.100] | 5.08 [.200] | 2 | 12 | 8-535541-9 |
| | | 99.06 [3.900] | 101.60 [4.000] | 40 | 12 | 8-535541-8 | | |
| 11 | 9 | 96.52 [3.800] | 99.06 [3.900] | 39 | 12 | 8-535541-7 | | |
| | | 93.98 [3.700] | 96.52 [3.800] | 38 | 12 | 8-535541-6 | | |
| 9 | 9 | 91.44 [3.600] | 93.98 [3.700] | 37 | 12 | 8-535541-5 | | |
| | | 88.90 [3.500] | 91.44 [3.600] | 36 | 12 | 8-535541-4 | | |
| 9 | 9 | 86.36 [3.400] | 88.90 [3.500] | 35 | 12 | 8-535541-3 | | |
| | | 83.82 [3.300] | 86.36 [3.400] | 34 | 12 | 8-535541-2 | | |
| 9 | 9 | 81.28 [3.200] | 83.82 [3.300] | 33 | 12 | 8-535541-1 | | |
| | | 78.74 [3.100] | 81.28 [3.200] | 32 | 12 | 8-535541-0 | | |
| 9 | 9 | 76.20 [3.000] | 78.74 [3.100] | 31 | 12 | 7-535541-9 | | |
| | | 73.66 [2.900] | 76.20 [3.000] | 30 | 12 | 7-535541-8 | | |
| 9 | 9 | 71.12 [2.800] | 73.66 [2.900] | 29 | 12 | 7-535541-7 | | |
| | | 68.58 [2.700] | 71.12 [2.800] | 28 | 12 | 7-535541-6 | | |
| 9 | 9 | 66.04 [2.600] | 68.58 [2.700] | 27 | 12 | 7-535541-5 | | |
| | | 63.50 [2.500] | 66.04 [2.600] | 26 | 12 | 7-535541-4 | | |
| 9 | 9 | 60.96 [2.400] | 63.50 [2.500] | 25 | 12 | 7-535541-3 | | |
| | | 58.42 [2.300] | 60.96 [2.400] | 24 | 12 | 7-535541-2 | | |
| 9 | 9 | 55.88 [2.200] | 58.42 [2.300] | 23 | 12 | 7-535541-1 | | |
| | | 53.34 [2.100] | 55.88 [2.200] | 22 | 12 | 7-535541-0 | | |
| 9 | 9 | 50.80 [2.000] | 53.34 [2.100] | 21 | 12 | 6-535541-9 | | |
| | | 48.26 [1.900] | 50.80 [2.000] | 20 | 12 | 6-535541-8 | | |
| 9 | 9 | 45.72 [1.800] | 48.26 [1.900] | 19 | 12 | 6-535541-7 | | |
| | | 43.18 [1.700] | 45.72 [1.800] | 18 | 12 | 6-535541-6 | | |
| 9 | 9 | 40.64 [1.600] | 43.18 [1.700] | 17 | 12 | 6-535541-5 | | |
| | | 38.10 [1.500] | 40.64 [1.600] | 16 | 12 | 6-535541-4 | | |
| 9 | 9 | 35.56 [1.400] | 38.10 [1.500] | 15 | 12 | 6-535541-3 | | |
| | | 33.02 [1.300] | 35.56 [1.400] | 14 | 12 | 6-535541-2 | | |
| 9 | 9 | 30.48 [1.200] | 33.02 [1.300] | 13 | 12 | 6-535541-1 | | |
| | | 27.94 [1.100] | 30.48 [1.200] | 12 | 12 | 6-535541-0 | | |
| 9 | 9 | 25.40 [1.000] | 27.94 [1.100] | 11 | 12 | 5-535541-9 | | |
| | | 22.86 [.900] | 25.40 [1.000] | 10 | 12 | 5-535541-8 | | |
| 9 | 9 | 20.32 [.800] | 22.86 [.900] | 9 | 12 | 5-535541-7 | | |
| | | 17.78 [.700] | 20.32 [.800] | 8 | 12 | 5-535541-6 | | |
| 9 | 9 | 15.24 [.600] | 17.78 [.700] | 7 | 12 | 5-535541-5 | | |
| | | 12.70 [.500] | 15.24 [.600] | 6 | 12 | 5-535541-4 | | |
| 9 | 9 | 10.16 [.400] | 12.70 [.500] | 5 | 12 | 5-535541-3 | | |
| | | 7.62 [.300] | 10.16 [.400] | 4 | 12 | 5-535541-2 | | |
| 9 | 9 | 5.08 [.200] | 7.62 [.300] | 3 | 12 | 5-535541-1 | | |
| | | FINISH | B | A | NO OF POSN | PART NUMBER | | |

| | | | | | | |
|---|---|---------------|----------------|----|------------|-------------|
| 9 | 2 | 2.54 [.100] | 5.08 [.200] | 2 | 12 | 3-535541-9 |
| | | 99.06 [3.900] | 101.60 [4.000] | 40 | 12 | 3-535541-8 |
| 9 | 2 | 96.52 [3.800] | 99.06 [3.900] | 39 | 12 | 3-535541-7 |
| | | 93.98 [3.700] | 96.52 [3.800] | 38 | 12 | 3-535541-6 |
| 9 | 2 | 91.44 [3.600] | 93.98 [3.700] | 37 | 12 | 3-535541-5 |
| | | 88.90 [3.500] | 91.44 [3.600] | 36 | 12 | 3-535541-4 |
| 9 | 2 | 86.36 [3.400] | 88.90 [3.500] | 35 | 12 | 3-535541-3 |
| | | 83.82 [3.300] | 86.36 [3.400] | 34 | 12 | 3-535541-2 |
| 9 | 2 | 81.28 [3.200] | 83.82 [3.300] | 33 | 12 | 3-535541-1 |
| | | 78.74 [3.100] | 81.28 [3.200] | 32 | 12 | 3-535541-0 |
| 9 | 2 | 76.20 [3.000] | 78.74 [3.100] | 31 | 12 | 2-535541-9 |
| | | 73.66 [2.900] | 76.20 [3.000] | 30 | 12 | 2-535541-8 |
| 9 | 2 | 71.12 [2.800] | 73.66 [2.900] | 29 | 12 | 2-535541-7 |
| | | 68.58 [2.700] | 71.12 [2.800] | 28 | 12 | 2-535541-6 |
| 9 | 2 | 66.04 [2.600] | 68.58 [2.700] | 27 | 12 | 2-535541-5 |
| | | 63.50 [2.500] | 66.04 [2.600] | 26 | 12 | 2-535541-4 |
| 9 | 2 | 60.96 [2.400] | 63.50 [2.500] | 25 | 12 | 2-535541-3 |
| | | 58.42 [2.300] | 60.96 [2.400] | 24 | 12 | 2-535541-2 |
| 9 | 2 | 55.88 [2.200] | 58.42 [2.300] | 23 | 12 | 2-535541-1 |
| | | 53.34 [2.100] | 55.88 [2.200] | 22 | 12 | 2-535541-0 |
| 9 | 2 | 50.80 [2.000] | 53.34 [2.100] | 21 | 12 | 1-535541-9 |
| | | 48.26 [1.900] | 50.80 [2.000] | 20 | 12 | 1-535541-8 |
| 9 | 2 | 45.72 [1.800] | 48.26 [1.900] | 19 | 12 | 1-535541-7 |
| | | 43.18 [1.700] | 45.72 [1.800] | 18 | 12 | 1-535541-6 |
| 9 | 2 | 40.64 [1.600] | 43.18 [1.700] | 17 | 12 | 1-535541-5 |
| | | 38.10 [1.500] | 40.64 [1.600] | 16 | 12 | 1-535541-4 |
| 9 | 2 | 35.56 [1.400] | 38.10 [1.500] | 15 | 12 | 1-535541-3 |
| | | 33.02 [1.300] | 35.56 [1.400] | 14 | 12 | 1-535541-2 |
| 9 | 2 | 30.48 [1.200] | 33.02 [1.300] | 13 | 12 | 1-535541-1 |
| | | 27.94 [1.100] | 30.48 [1.200] | 12 | 12 | 1-535541-0 |
| 9 | 2 | 25.40 [1.000] | 27.94 [1.100] | 11 | 12 | 535541-9 |
| | | 22.86 [.900] | 25.40 [1.000] | 10 | 12 | 535541-8 |
| 9 | 2 | 20.32 [.800] | 22.86 [.900] | 9 | 12 | 535541-7 |
| | | 17.78 [.700] | 20.32 [.800] | 8 | 12 | 535541-6 |
| 9 | 2 | 15.24 [.600] | 17.78 [.700] | 7 | 12 | 535541-5 |
| | | 12.70 [.500] | 15.24 [.600] | 6 | 12 | 535541-4 |
| 9 | 2 | 10.16 [.400] | 12.70 [.500] | 5 | 12 | 535541-3 |
| | | 7.62 [.300] | 10.16 [.400] | 4 | 12 | 535541-2 |
| 9 | 2 | 5.08 [.200] | 7.62 [.300] | 3 | 12 | 535541-1 |
| | | FINISH | B | A | NO OF POSN | PART NUMBER |

THIS DRAWING IS A CONTROLLED DOCUMENT.

| | | | |
|-------------------------|--|-----------------------|--|
| DIMENSIONS: mm [INCHES] | TOLERANCES UNLESS OTHERWISE SPECIFIED: | DIN M. BINNER OSNOV2 | OSNOV2 |
| 0 PLC ± - | 1 PLC ± - | OSNOV2 | OSNOV2 |
| 2 PLC ± 0.25[.010] | 3 PLC ± 0.13[.005] | APVD J. JOLSON OSNOV2 | NAME |
| 4 PLC ± - | ANGLES ± - | J. JOLSON OSNOV2 | PRODUCT SPEC |
| MATERIAL FINISH | WEIGHT | 108-25022 | APPLICATION SPEC |
| | SCALE 4:1 | 114-25018 | SIZE |
| | SHEET 1 of 1 | 00779 | RECTASSY, MOD IV, SINGLE ROW, .100CL, VERTICAL BOARD MOUNT, CLOSED, TOP ENTRY, SHORT PNT. OF CONTACT |
| | REV N6 | 535541 | RESTRICTED TO |

CUSTOMER DRAWING

Looking for pricing, stock, or lifecycle information?

Click below to explore more details on WIN SOURCE:

 [View 5-535541-4 on WIN SOURCE](#)

 [TE Connectivity](#) Information

Optimize Your Supply Chain with WIN SOURCE Solutions

-  Global Sourcing Solution
-  Obsolete Management
-  Cost Control Management
-  Shortage Management
-  Alternative Solution
-  Excess Inventory Management