



**THE DATASHEET OF  
91615-420ALF**



PRODUCT NUMBER  
91615-XXXXW/LF

ROHS COMPATIBLE. SEE NOTE 7

OPTIONAL LETTER SEE SHEET 2  
N: PRODUCT WITH TYPE MARKING ON CONNECTOR

OPTIONAL LETTER

A: PRODUCT WITH PICK UP CAP PACKED IN TAPE & REEL SEE TA856.

B: PRODUCT WITH PICK UP CAP PACKED IN TUBE.

NUMBER OF POSITIONS PER ROW: 03 UP TO 30.  
MORE THAN 30 POSITIONS ON SPECIAL REQUEST.

PLATING CODE

3 = 0.76µm GOLD ON CONTACT AREA.

2µm MIN MATTE TIN ON TAIL.

4 = 2µm MIN MATTE TIN FULL PLATED

1.27µm Ni MINUNDERPLATING

NOTES:

- 1 - HOUSING MAT'L: THERMOPLASTIC GLASS FILLED FLAME RETARDANT PER UL 94 V-0 COLOR: GREY.
- 2 - TERMINAL MATERIAL: PHOSPHOR BRONZE.
- 3 - PACKAGING:  
3 UP TO 4 POSITIONS PRODUCT PACKED IN PLASTIC BOX.  
5 UP TO 30 POSITIONS PRODUCT PACKED IN TUBE.  
WHOLE 91615-303B PRODUCT PACKED IN TUBE.
- 4 - TO DETERMINE DIMENSIONS:  
N = NUMBER OF POSITIONS PER ROW  
EXAMPLE: 8 POS: ((N+2)x2.54)-0.08=25.32 mm.
- 5 - RECOMMENDED IR PROFILE PER TA842.
- 6 - Ø2.65 MINI FOR PICK & PLACE ASSEMBLY(=0 INSERTION FORCE).
- 7 - ROHS COMPATIBLE PRODUCT SPECIFICATIONS

d - PLATING:

- "LF" MEANS THE PRODUCT IS LEAD-FREE,  
2µm MINIMUM MATTE TIN OVER 1.27µm  
MINIMUM NICKEL UNDERPLATE.

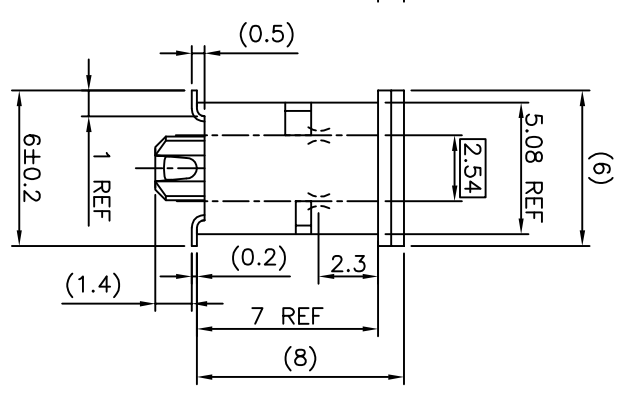
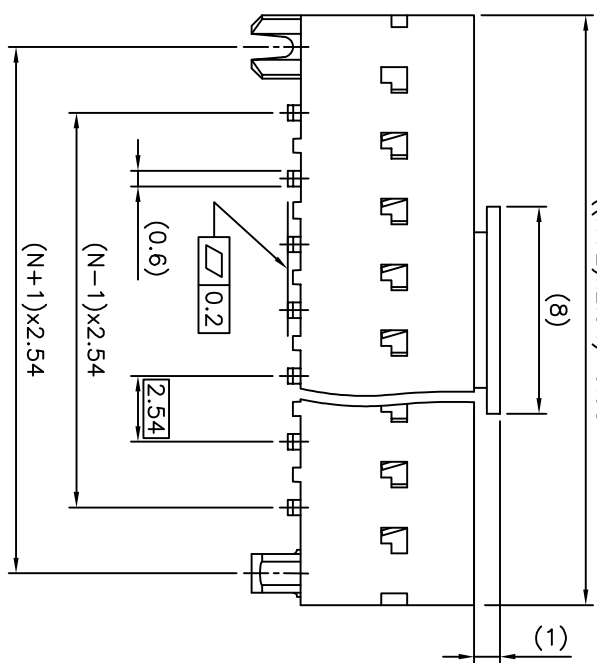
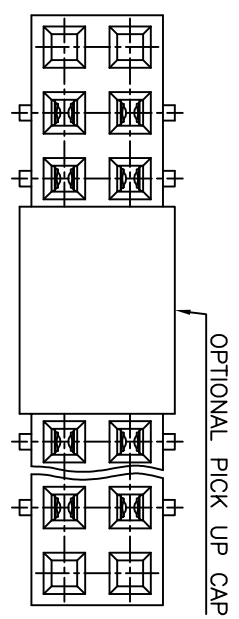
b - MANUFACTURING PROCESS COMPATIBILITY

- THE HOUSING WILL WITHSTAND EXPOSURE TO  
260°C PEAK TEMPERATURE FOR 30 SECONDS  
MAX IN A CONVECTION, INFRA-RED OR VAPOR  
PHASE OR REFLOW OVEN.

c - LABELING:

- MEETS PACKAGING SPECS AS PER GS-14-920

d - LEGAL STATEMENT: SEE GS-47-0004



mat'l. code		SEE NOTES		ISO 1302	ISO 406	ISO 1001	projection	product family
ltr	ecn no	dr	date	tolerances unless otherwise specified	40.3	mm	scale 5:1	DUBOX
AB	F04-0347	DLE	04.11.10	linear				
AC	F06-0137	DLE	06.02.27	linear				
AD	F06-0204	DLE	06.06.23	#2				
AE	F07-0169	DLE	07.03.30	dr	P	NIZI	95.11.17	
AF	B-19123	LMU	14.10.21	engf	P,NZ		01.07.23	
				chr	P,NZ		01.07.23	
				dppd	JF,N		01.07.23	

sheet	revision	AE	D	B					
Index	sheet	1	2	3					

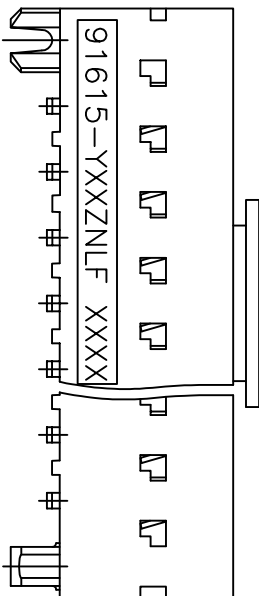
title  
BtB RECEPT.  
VERT DR SMT  
sheet 1 of 3  
size A3  
Drawing

PRODUCT NUMBER  
91615-YXXZNLF

ROHS COMPATIBLE, SEE NOTE 7

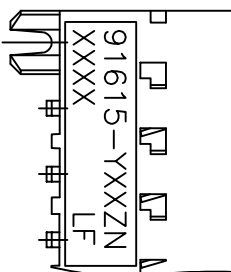
APPLICATION SPECIFIC

PRINTING METHOD FOR 91615-Y07 UP TO -Y50  
MARKING: PART NUMBER AND DATE CODE



91615-YXXZNLF XXXX  
YEAR CODE  
WEEK CODE  
FOR OTHER OPTION  
LETTERS SEE SHEET 1  
NUMBER OF POS.  
PLATING CODE

PRINTING METHOD FOR 91615-Y03 UP TO -Y07



form: A3

1

2

3

4

5

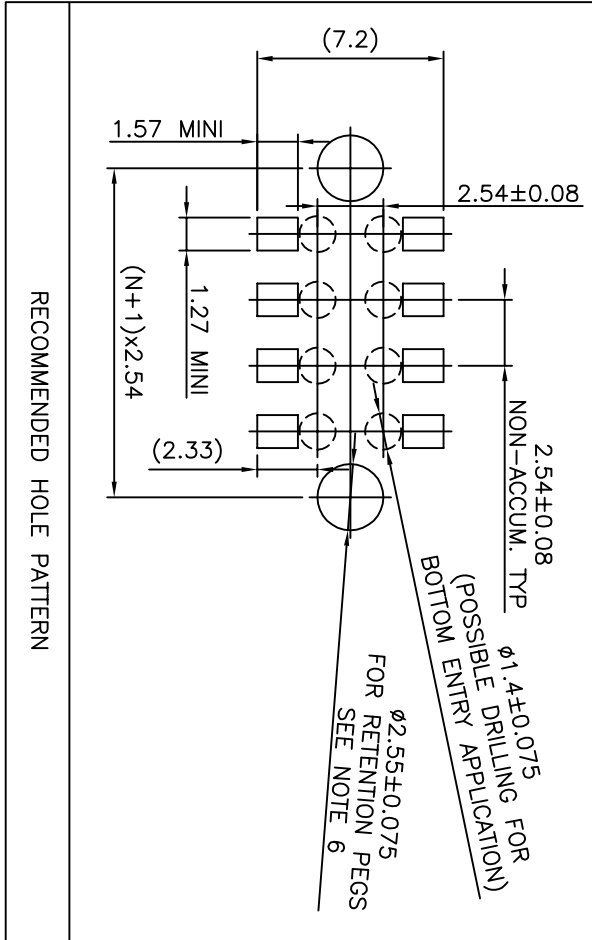
6

mat'l. code		surface		tolerance		projection		product family	
ltr	ecn no	dr	date	ISO 1302	ISO 406	ISO 1101	ISO 1101	title	DUBOX
A	F10379	DLE	01.07.23	tolerances unless otherwise specified	±0.3	linear	mm	BtB RECEPT.	
B	F04-0347	DLE	04.11.10	angles				VERT DR SMT	
C	F06-0137	DLE	06.02.27	#2			mm		
D	F06-0204	DLE	06.06.23	dr	DLE	01.07.23	mm		
E	B-19123	LMU	14.10.21	engf	P.NZ	01.07.23	mm		
				chr	P.NZ	01.07.23	mm		
				apptd	JF.N	01.07.23	mm		
sheet	revision								
index	sheet								



dwg no 91615  
sheet 2 of -  
size A3



type CUSTOMER  
Drawing



mat'l. code		surface		tolerance		projection		product family	
ISO 1302		ISO 406 ISO 1101		mm		DUBOX		title	
A F04-034/DLE 04.11.10		tolerances unless otherwise specified		±0.3		FCI		BtB RECEPT.	
B F06-0204/DLE 06.06.23		linear		scale N/A		dwg no		VERT DR SMT	
dr		DLE		04.11.10		type		CUSTOMER	
engr		PNZ		04.11.10		sheet 3 of -		size	
chr		PNZ		04.11.10		A3		Drawing	
appd		P NZ		04.11.10		sheet		revision	
sheet		sheet		sheet		sheet		sheet	
index		index		index		index		index	

## Looking for pricing, stock, or lifecycle information?

Click below to explore more details on WIN SOURCE:

-  [View 91615-420ALF on WIN SOURCE](#)
-  [Amphenol FCI Information](#)

## Optimize Your Supply Chain with WIN SOURCE Solutions

-  Global Sourcing Solution
-  Obsolete Management
-  Cost Control Management
-  Shortage Management
-  Alternative Solution
-  Excess Inventory Management