



THE DATASHEET OF
5177985-2

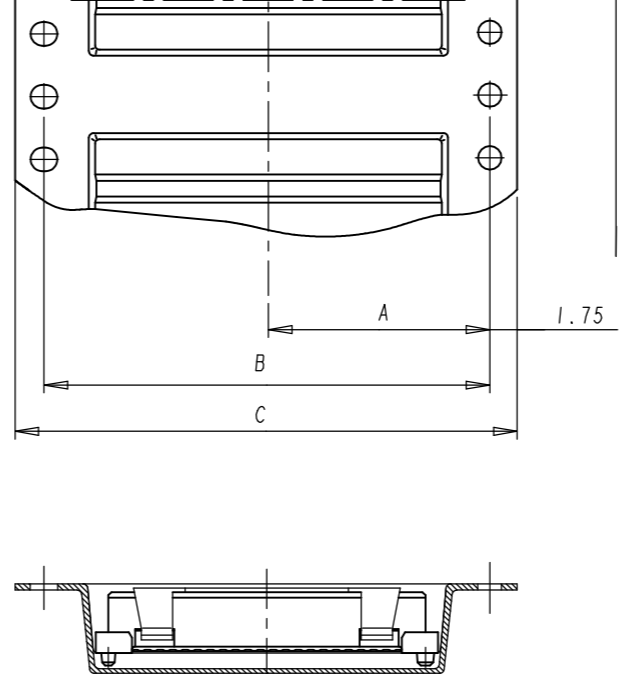


3

2

1

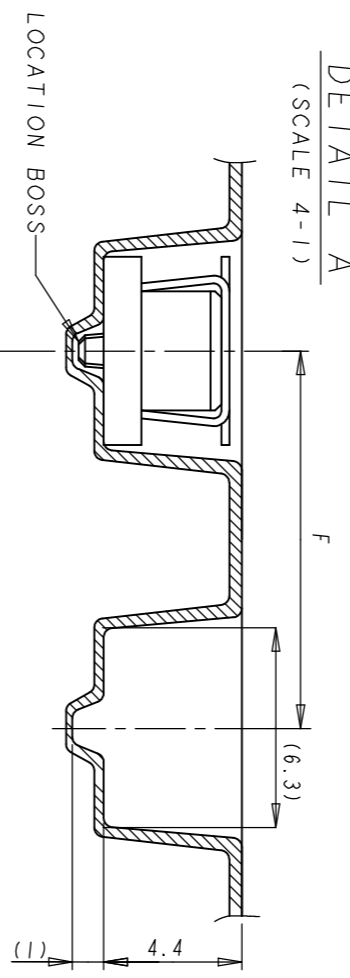
TOP OF REEL



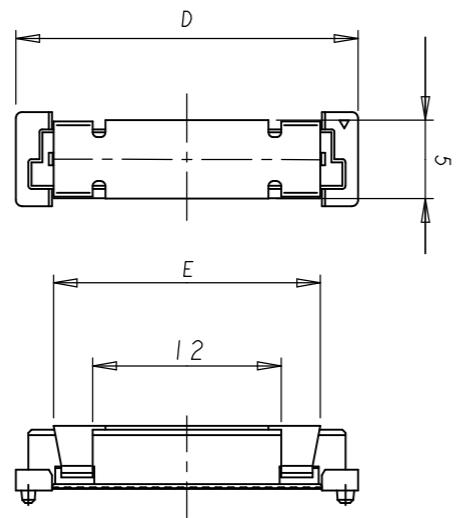
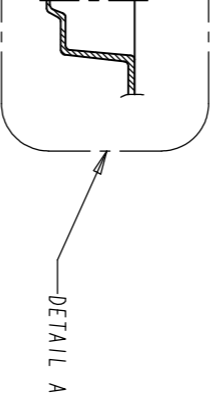
LOW HALOGEN

| P | LTR | DESCRIPTION | DATE | DMN | APPD |
|----|-----|---------------------------|-----------|-----|------|
| R3 | | REVISED PER ECO-19-001094 | 21JAN2019 | R.L | H.L |

REVISIONS



- NOTES:
- 1 MATERIAL: HOUSING: L.C.P (HIGH TEMP THERMOPLASTIC UL 94V-0, NATURAL. CONTACT: BERYLLIUM COPPER.
 - 2 FINISH: CONTACT AREA: 0.0002 MIN GOLD ON 0.0013 MIN ALL OVER NICKEL. SOLDERING AREA: 0.002 MIN MATTE TIN.
 - 3 POSITION SERIES: SEE TABLE.
 - 4 CONN STACK HEIGHT COMBINE OF PLUG "Y" H VS REC "X" H. STACK HEIGHT = Y + X - 5
 - 5 FINISH: CONTACT AREA: 0.00038 MIN GOLD ON 0.0013 MIN ALL OVER NICKEL. SOLDERING AREA: 0.002 MIN MATTE TIN.
 - 6 CONNECTOR WITH BLACK COLOR AND POLYIMIDE COVER



WINDING THE COVER TAPE AROUND THE OUTER PERIPHERY IN A TURN.

STEEL COVER

10 HOLES

WITH PRODUCT CHARGE

300mm

WITHOUT CHARGE APPROX

| FINISH | QTY | F | E | D | C | B | A | POS | PART NO. |
|----------------|------|----|----|------|-----|-------|------|-----|----------|
| GOLD FLASH -Sn | | | | 69.8 | 88 | 84.4 | 42.2 | 160 | 9- |
| | | | | 53.8 | 72 | 68.4 | 34.2 | 120 | 9- |
| | 700 | 16 | | 45.8 | 72 | 68.4 | 34.2 | 100 | 9- |
| | | | | 37.8 | 56 | 52.4 | 26.2 | 80 | 9- |
| | | | | 29.8 | 44 | 40.4 | 20.2 | 60 | 9- |
| | 1000 | 12 | 17 | 21.8 | 32 | 28.4 | 14.2 | 40 | 9- |
| | | | | 85.8 | 104 | 100.4 | 50.2 | 200 | 2- |
| | | | | 77.8 | 104 | 100.4 | 50.2 | 180 | 1- |
| | | | | 70.1 | 88 | 84.4 | 42.2 | 160 | 1- |
| | | | | 61.8 | 88 | 84.4 | 42.2 | 140 | 1- |
| | | | | 53.8 | 72 | 68.4 | 34.2 | 120 | 1- |
| | | | | 45.8 | 72 | 68.4 | 34.2 | 100 | 1- |
| | | | | 37.8 | 56 | 52.4 | 26.2 | 80 | 1- |
| | | | | 29.8 | 44 | 40.4 | 20.2 | 60 | 1- |
| | 1000 | 12 | 17 | 21.8 | 32 | 28.4 | 14.2 | 40 | 1- |
| | | | | 85.8 | 104 | 100.4 | 50.2 | 200 | 1- |
| | | | | 77.8 | 104 | 100.4 | 50.2 | 180 | 1- |
| | | | | 69.8 | 88 | 84.4 | 42.2 | 160 | 1- |
| | | | | 61.8 | 88 | 84.4 | 42.2 | 140 | 1- |
| | | | | 53.8 | 72 | 68.4 | 34.2 | 120 | 1- |
| | | | | 45.8 | 72 | 68.4 | 34.2 | 100 | 1- |
| | | | | 37.8 | 56 | 52.4 | 26.2 | 80 | 1- |
| | | | | 29.8 | 44 | 40.4 | 20.2 | 60 | 1- |
| | 1000 | 12 | 17 | 21.8 | 32 | 28.4 | 14.2 | 40 | 1- |

(R1)

THIS DRAWING IS A CONTROLLED DOCUMENT.

DMN: SK LEAW

CHK: ERIC TNG

APD: SF LEONG

PRODUCT SPEC: 108-5390

APPLICATION SPEC: 114-5254

WEIGHT: 0

CUSTOMER DRAWING

STE TE Connectivity

RECEPTACLE ASSEMBLY 5H TYPE (0.5MM BOSS LENGTH) FOR 0.8FH ON TAPING

| DIMENSIONS: | TOLERANCES UNLESS OTHERWISE SPECIFIED: |
|-------------|----------------------------------------|
| mm | |
| 0 PLC | ± 0.3 |
| 1 PLC | ± 0.25 |
| 2 PLC | ± 0.2 |
| 3 PLC | ± - |
| 4 PLC | ± - |

| MATERIAL | FINISH |
|----------|--------|
| - | - |

| SIZE | QTY | SCALE | SHEET | REV |
|------|-------|-------|--------|-----|
| A2 | 00779 | 1:1 | 1 of 4 | R3 |

5177985

A

B

C

D

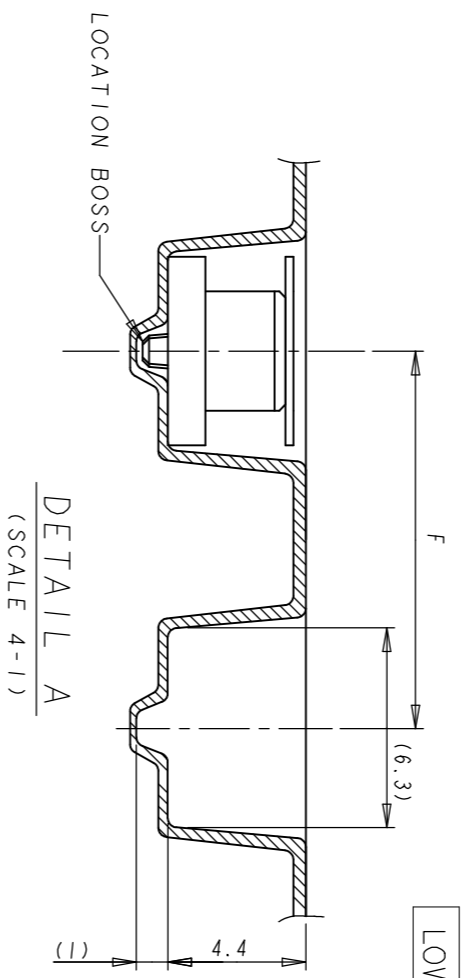
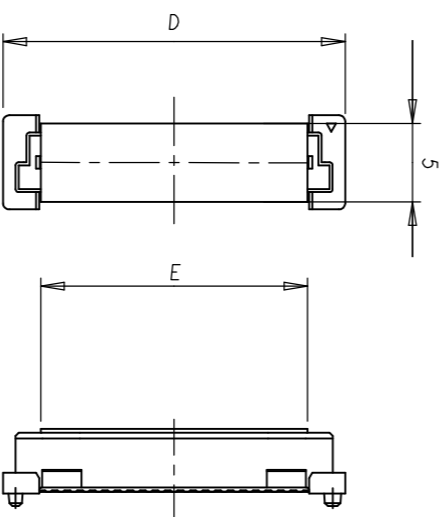
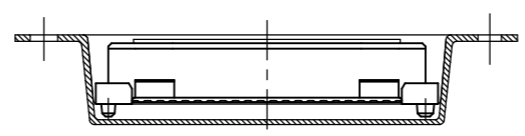
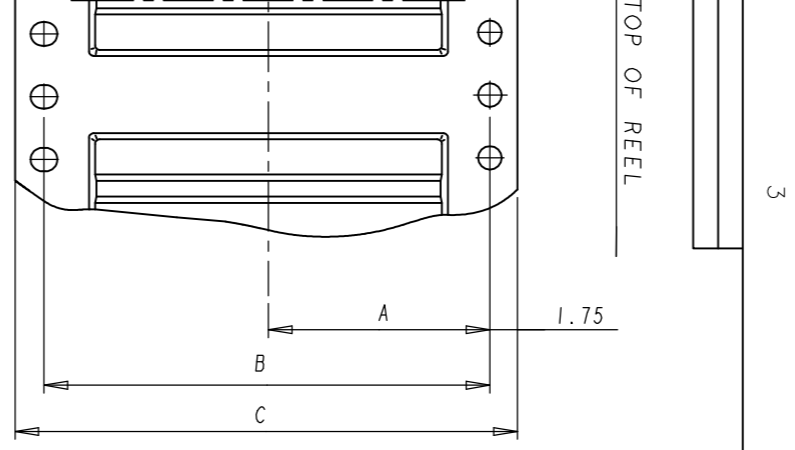
| REVISIONS | | | |
|-----------|-----|-------------|------|
| P | LTR | DESCRIPTION | DATE |
| - | - | SEE SHEET 1 | - |

REVISED BY

DATE

APP'D

LOW HALOGEN

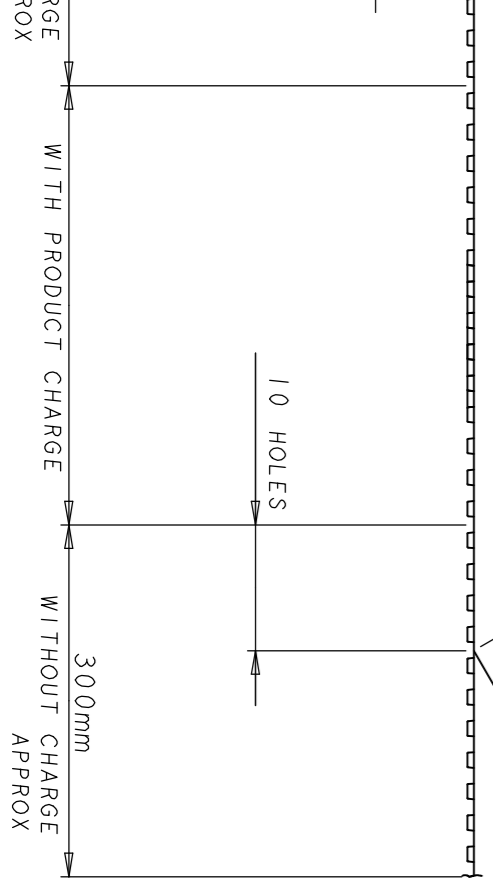


DETAIL A
(SCALE 4-1)

DETAIL B

POLYIMIDE COVER

WINDING THE COVER TAPE
AROUND THE OUTER
PERIPHERY IN A TURN.



| FINISH | QTY | F | E | D | C | B | A | POS | PART NO. |
|--------|-----|----|----|------|----|------|------|-----|-------------|
| A2 | 700 | 16 | 11 | 61.8 | 88 | 84.4 | 42.2 | 140 | 9-5177985-6 |

THIS DRAWING IS A CONTROLLED DOCUMENT.

DMN: SK LEAW
CHK: ERIC TNG
APD: SF LEONG

17MAR2004
RECEPTACLE ASSEMBLY 5H TYPE
(0.5MM BOSS LENGTH) FOR 0.8FH
ON TAPING



TE Connectivity

DIMENSIONS: mm

TOLERANCES UNLESS OTHERWISE SPECIFIED:

APPLIC. SPEC: 114-5254
WEIGHT: -
CUSTOMER DRAWING

FINISH

0 PLG ± 0.3
1 PLG ± 0.25
2 PLG ± 0.2
3 PLG ± -
4 PLG ± -

SIZE: A2
CASE CODE: 00779
DRAWING NO: C-5177985

MATERIAL: -

SCALE: 1:1

SHEET: 2 of 4
REV: R3

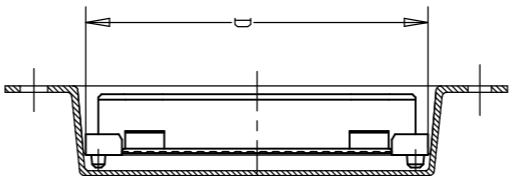
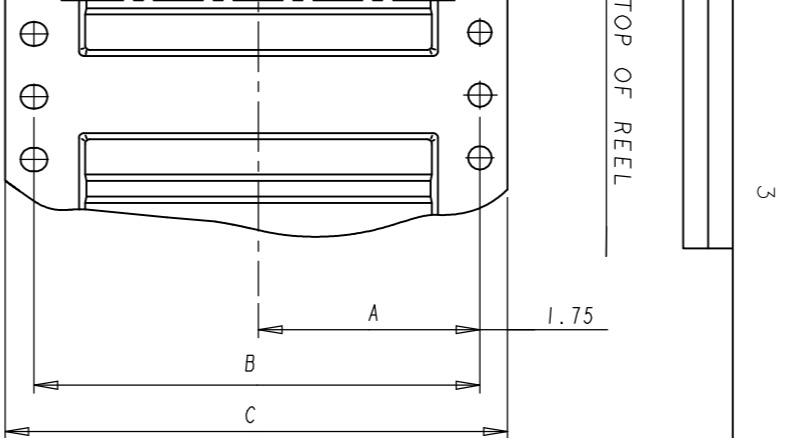
5177985

A

B

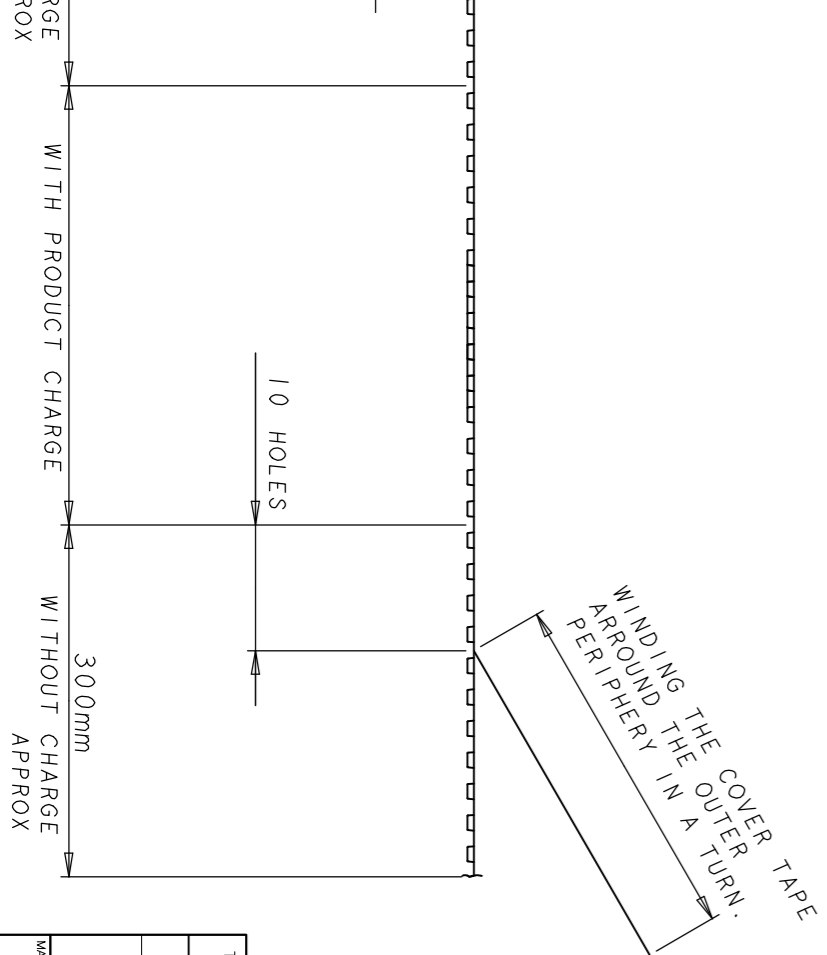
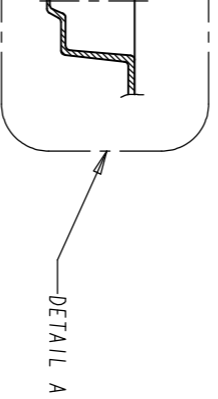
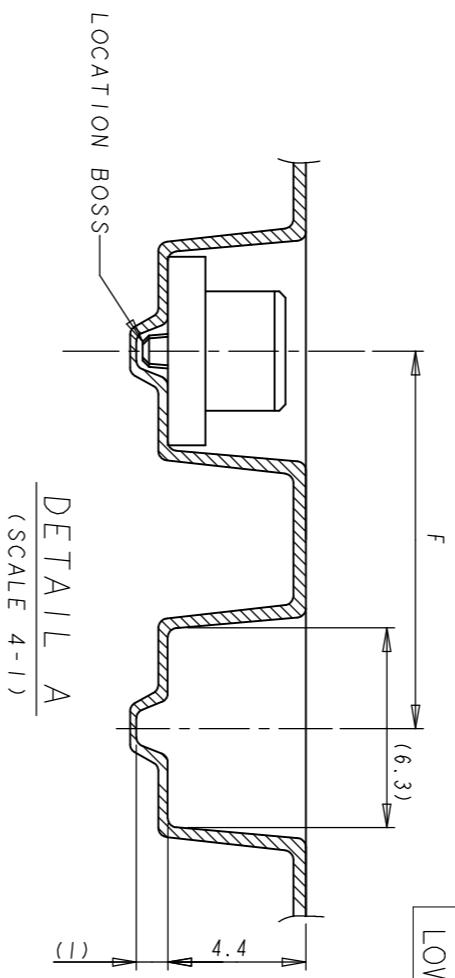
C

D



| REVISIONS | | | |
|-----------|-----|-------------|------|
| P | LTR | DESCRIPTION | DATE |
| - | - | SEE SHEET 1 | - |

LOW HALOGEN



WITHOUT COVER

| FINISH | QTY | F | D | C | B | A | POS | PART NO. |
|--------|-----|----|------|----|------|------|-----|-------------|
| A | 700 | 16 | 53.8 | 72 | 68.4 | 34.2 | 120 | 8-5177985-5 |

| | | | | | | | |
|----------------------------------------|--------|------------------|----------|-----------|---------------|---------------------------------------------------------------------------------------------------------|------------|
| THIS DRAWING IS A CONTROLLED DOCUMENT. | | DMN | SK LEAW | 17MAR2004 | NAME | STE TE Connectivity RECEPTACLE ASSEMBLY 5H TYPE (0.5MM BOSS LENGTH) FOR 0.8FH ON TAPING | |
| DIMENSIONS: mm | | CHK | ERIC TNG | - | SIZE | CAE CODE | DRAWING NO |
| TOLERANCES UNLESS OTHERWISE SPECIFIED: | | APD | SF LEONG | - | A2 | 00779 | 5177985 |
| 0 PLG | ± 0.3 | PRODUCT SPEC | | 108-5390 | SCALE | | 1:1 |
| 1 PLG | ± 0.25 | APPLICATION SPEC | | 114-5254 | SHEET | | 3 of 4 |
| 2 PLG | ± 0.2 | WEIGHT | | - | REV | | R3 |
| 3 PLG | ± - | CUSTOMER DRAWING | | - | RESTRICTED TO | | - |
| 4 PLG | ± - | | | - | | | |

5177985

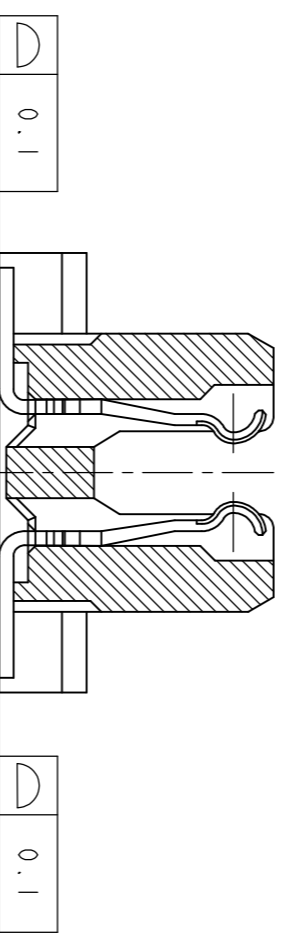
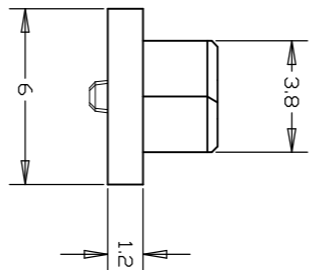
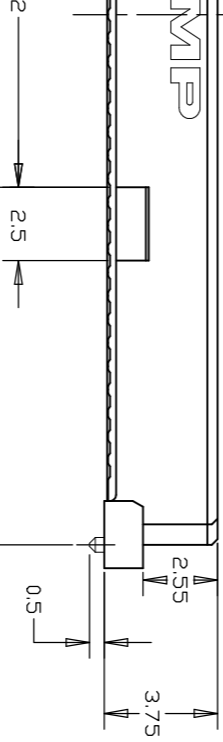
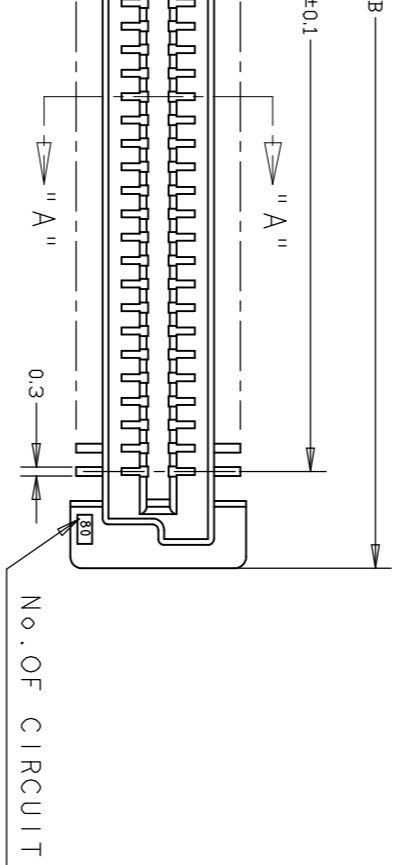
3

2

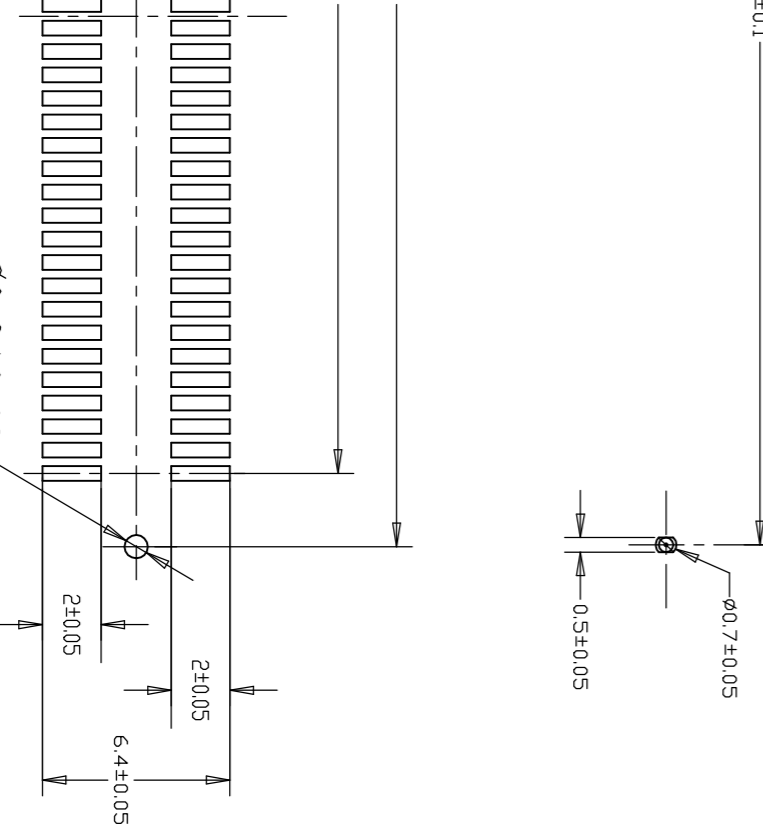
1

| REVISIONS | | | | |
|-----------|-----|-------------|------|------------|
| P | LTR | DESCRIPTION | DATE | DMN / APVD |
| - | - | SEE SHEET 1 | - | - |

LOW HALOGEN



SECT. "A" - "A"
(SCALE 10-1)



| ② | 52.2 | 53.8 | 47.2 | 120 | 8 | -5 |
|---|------|------|------|-----|----------|----|
| | 68.2 | 69.8 | 63.2 | 160 | 9 | -8 |
| | 52.2 | 53.8 | 47.2 | 120 | 9 | -5 |
| | 44.2 | 45.8 | 39.2 | 100 | 9 | -4 |
| | 36.2 | 37.8 | 31.2 | 80 | 9 | -3 |
| | 28.2 | 29.8 | 23.2 | 60 | 9 | -2 |
| | 20.2 | 21.8 | 15.2 | 40 | 9 | -1 |
| | 84.2 | 85.8 | 79.2 | 200 | 2 | -0 |
| | 76.2 | 77.8 | 71.2 | 180 | 1 | -9 |
| | 68.2 | 69.8 | 63.2 | 160 | 1 | -8 |
| | 60.2 | 61.8 | 55.2 | 140 | 1 | -6 |
| | 52.2 | 53.8 | 47.2 | 120 | 1 | - |
| | 44.2 | 45.8 | 39.2 | 100 | 1 | -4 |
| | 36.2 | 37.8 | 31.2 | 80 | 1 | -3 |
| | 28.2 | 29.8 | 23.2 | 60 | 1 | -2 |
| | 20.2 | 21.8 | 15.2 | 40 | 1 | -1 |
| | 76.2 | 77.8 | 71.2 | 180 | 1 | -9 |
| | 68.2 | 69.8 | 63.2 | 160 | 1 | -8 |
| | 60.2 | 61.8 | 55.2 | 140 | 1 | -6 |
| | 52.2 | 53.8 | 47.2 | 120 | 1 | -5 |
| | 44.2 | 45.8 | 39.2 | 100 | 1 | -4 |
| | 36.2 | 37.8 | 31.2 | 80 | 1 | -3 |
| | 28.2 | 29.8 | 23.2 | 60 | 1 | -2 |
| | 20.2 | 21.8 | 15.2 | 40 | 1 | -1 |
| | C | B | A | POS | PART NO. | |

5177985

THIS DRAWING IS A CONTROLLED DOCUMENT.

DMN SK LEAW 17MAR2004

STE TE Connectivity

DIMENSIONS: mm

TOLERANCES UNLESS OTHERWISE SPECIFIED:

| | | |
|-------|---|------|
| 0 PLG | ± | - |
| 1 PLG | ± | 0.3 |
| 2 PLG | ± | 0.25 |
| 3 PLG | ± | 0.2 |
| 4 PLG | ± | - |

DMN CHK ERIC TNG
APVD SF LEONG
PRODUCT SPEC 108-5390
APPLICATION SPEC
WEIGHT 114-5254

RECEPTACLE ASSEMBLY 5H TYPE
(0.5MM BOSS LENGTH) FOR 0.8FH
ON TAPING

CONNECTOR ONLY

C. BOARD LAYOUT

MATERIAL - FINISH -

CUSTOMER DRAWING

SIZE A2 CASE CODE 00779 DRAWING NO C-5177985 SCALE 1:1 SHEET 4 OF 4 REV R3

A

C

D

Looking for pricing, stock, or lifecycle information?

Click below to explore more details on WIN SOURCE:

[View 5177985-2 on WIN SOURCE](#)

[TE Connectivity Information](#)

Optimize Your Supply Chain with WIN SOURCE Solutions

- ✓ Global Sourcing Solution
- ✓ Obsolete Management
- ✓ Cost Control Management
- ✓ Shortage Management
- ✓ Alternative Solution
- ✓ Excess Inventory Management