

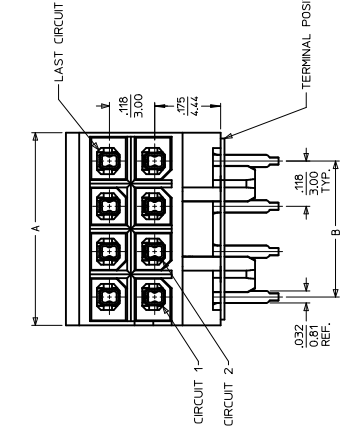
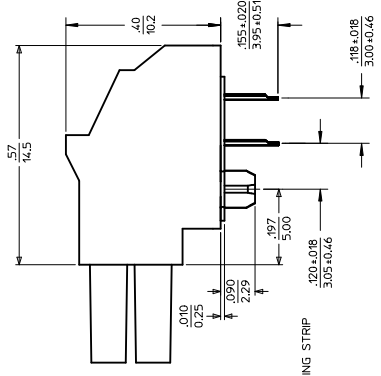
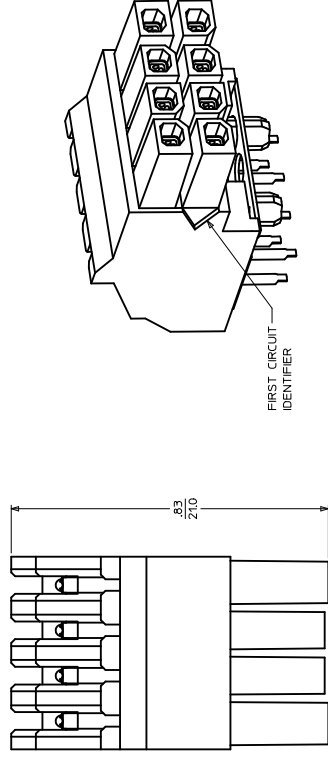
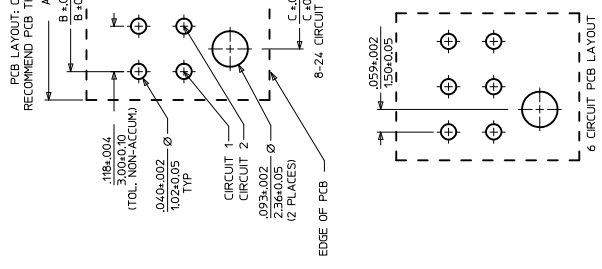


**THE DATASHEET OF**  
**44764-0801**



MATERIAL NUMBER	NUMBER OF POSITIONS	PLATING OPTION
44764-0401	04	A
44764-0402	04	B
44764-0403	04	C
44764-0601	06	A
44764-0602	06	B
44764-0603	06	C
44764-0801	08	A
44764-0802	08	B
44764-0803	08	C
44764-1001	10	A
44764-1002	10	B
44764-1003	10	C
44764-1201	12	A
44764-1202	12	B
44764-1203	12	C
44764-1401	14	A
44764-1402	14	B
44764-1403	14	C
44764-1601	16	A
44764-1602	16	B
44764-1603	16	C
44764-1801	18	A
44764-1802	18	B
44764-1803	18	C
44764-2001	20	A
44764-2002	20	B
44764-2003	20	C
44764-2201	22	A
44764-2202	22	B
44764-2203	22	C
44764-2401	24	A
44764-2402	24	B
44764-2403	24	C

NUMBER OF POSITIONS	DIM. 'A'	DIM. 'B'	DIM. 'C'
24	14.45/(36.70)	1.299/(33.00)	1.181/(30.00)
22	13.27/(33.70)	1.181/(30.00)	1.063/(27.00)
20	12.09/(30.70)	1.063/(27.00)	0.945/(24.00)
18	1.09/(27.70)	0.945/(24.00)	0.827/(21.00)
16	0.974/(24.70)	0.827/(21.00)	0.709/(18.00)
14	0.854/(21.70)	0.709/(18.00)	0.591/(15.00)
12	0.736/(18.70)	0.591/(15.00)	0.472/(12.00)
10	0.618/(15.70)	0.472/(12.00)	0.354/(9.00)
8	0.500/(12.70)	0.354/(9.00)	0.236/(6.00)
6	0.382/(9.70)	0.236/(6.00)	—
4	0.264/(6.70)	0.118/(3.00)	—



- NOTES:
- MATERIAL: HOUSING- LIQUID CRYSTAL POLY PHOSPHOR BRONZE TERMINAL- PHOSPHOR BRONZE POSITIONING STRIP- HTLAR. CO.
  - FINISH: (A) = HOT TIN DIP: .000040/0. (B) = SELECTIVE GOLD IN THE THE PC TAIL AREA. .000000/0. (C) = SELECTIVE GOLD IN THE THE PC TAIL AREA. .000000/0.
  - PRODUCT SPECIFICATIONS: PER MIL-STD-883C.
  - PACKAGING SPECIFICATION: PER MIL-STD-20K.
  - THIS HEADER MATES WITH MOLEX AND MOLEX BHI PLUG SERIES 4.
  - MOLEX RECOMMENDS THE USE OF THIS PART FOR THE FOLLOWING CONTINUITY TESTING IS PERFORMED ON THIS PART CONFORMS TO CLAS COMPONENTS (SERIES 44428).
  - THIS PART CONFORMS TO CLAS SPECIFICATION PS-45499-002.

QUALITY SYMBOLS	GENERAL TOLERANCES (UNLESS SPECIFIED)	DIMENSION STYLE
	4 PLACES ±---	IN/MM
	3 PLACES ±---	DRAWN BY
	2 PLACES ±0.25	DATE
	1 PLACE ±0.35	BURLESON 2000/07/13
	ANGULAR ±1/2°	CHECKED BY
		MUELLER 2000/07/13
		APPROVED BY
		EDGLEY 2000/07/13
		MATERIAL NO.
		SEE CHART
		THIS DRAWING CONTAINS INCORPORATED AND SIZE

REV	DESCRIPTION
E1	EC NO: UCP2012-3379 DRW:MSTR0H 2012/04/12 CHKD:SSOUSEK 2012/04/16 APP:FSM1TH 2012/05/16

## Looking for pricing, stock, or lifecycle information?

Click below to explore more details on WIN SOURCE:

 [View 44764-0801 on WIN SOURCE](#)

 [Molex, LLC Information](#)

## Optimize Your Supply Chain with WIN SOURCE Solutions

-  Global Sourcing Solution
-  Obsolete Management
-  Cost Control Management
-  Shortage Management
-  Alternative Solution
-  Excess Inventory Management