

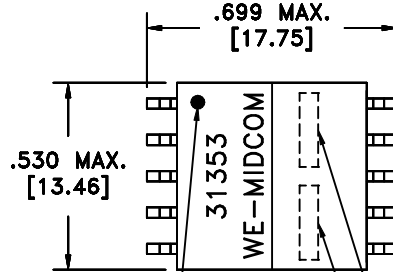
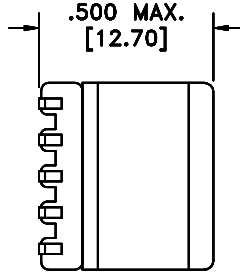
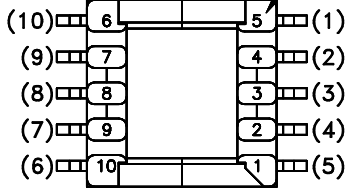


**THE DATASHEET OF  
750031353**

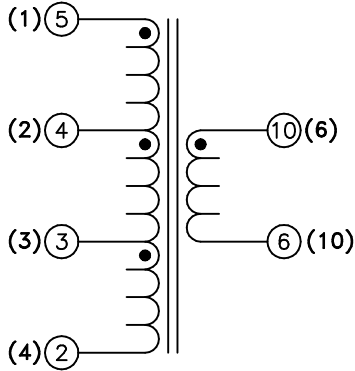


SOLDER SUFFIX	CUSTOMER TERMINAL	RoHS	LEAD(Pb)-FREE	6E
	Sn63%, Pb37%	No	No	
LF1	Sn96%, Ag4%	Yes	Yes	

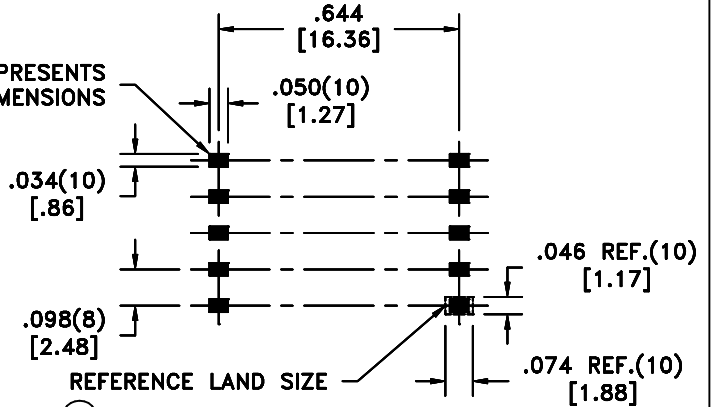
TERM. NO.'s FOR REF. ONLY  
CUSTOMER TERM. NO's IN ( )



DOT LOCATES TERM. #5  
CUSTOMER TERM. (1)  
LOT CODE & DATE CODE  
SOLDER SUFFIX



AREA REPRESENTS  
TERMINAL PAD DIMENSIONS



6B CUSTOMER TO DETERMINE LAND LAYOUT

**ELECTRICAL SPECIFICATIONS @ 25°C unless otherwise noted:**

D.C. RESISTANCE (@20°C): 5-2, 0.12 ohms max.  
10-6, 0.72 ohms max.


DIELECTRIC RATING: 500VAC, 1 minute tested by applying 625VAC for 1 second between 5-10.

INDUCTANCE: 11.30uH ±10%, 100kHz, 100mVAC, 5-4, Ls.

URNS RATIO:  
(10-6):(5-4) = 5:1, ±1%.  
(10-6):(4-3) = 5:1, ±1%.  
(10-6):(3-2) = 5:1, ±1%.


Midcom p/n 31353R-LF1 is eiSos p/n 750031353.

6E Designed to meet the specifications of Silicon Laboratories p/n: Si3210 Rev. B.  
DETAILS SUBJECT TO CHANGE

Unless otherwise specified: Tolerances: Angles: ±1° Fractions: ±1/64 Decimals: ±.005[.13]	DRAWING TITLE <b>TRANSFORMER</b>	Midcom  www.midcom-inc.com	DWG.# 31353R/-LF1
	eiSos p/n: 750031353	DRAWING NO. <b>31353R/-LF1</b>	
This drawing is dual dimensioned. Dimensions in brackets are in millimeters.	REVISIONS: SEE SHEET 1	SCALE ---	SHEET 2 OF 5

## Looking for pricing, stock, or lifecycle information?

Click below to explore more details on WIN SOURCE:

-  [View 750031353 on WIN SOURCE](#)
-  [Wurth Electronics Inc Information](#)

## Optimize Your Supply Chain with WIN SOURCE Solutions

-  Global Sourcing Solution
-  Obsolete Management
-  Cost Control Management
-  Shortage Management
-  Alternative Solution
-  Excess Inventory Management