



**THE DATASHEET OF
77311-SAE-36LF**



2	3	4	5	6
---	---	---	---	---

, 2µm TIN MIN ON TAIL
 , 2µm TIN MIN ON TAIL
 , 2µm TIN MIN ON TAIL

PIN TYP
 : ALL PLATING VERSIONS

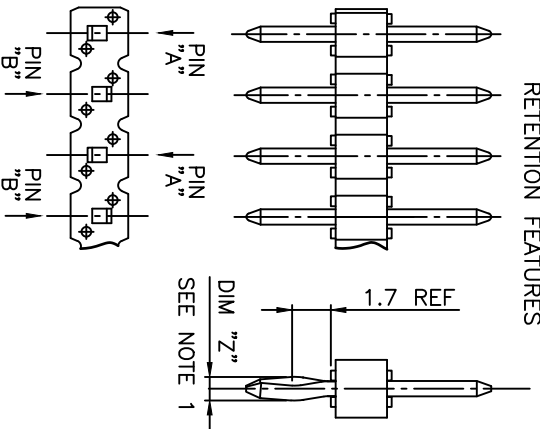
M "Z"=(0.99)
 M "Z"= 1.05MIN -1.15MAX
 TION.

/ ARROWS.
 ENTENTION IS IN
 AL PINS)
 ALL LENGTH TO BE

-44JC03LF & 77311-TAJC03LF
 UL94V-0 COLOR : NATURAL

LD / GXT PLATING AREA

RETENTION FEATURES





mat'l. code		surface		tolerance		projection		product family	
lfr	ecn no	dr	date	ISO 1302	ISO 406	ISO 1101	mm	BERGSTIK	
BU	B-20596	AMA	15.03.30	tolerances unless otherwise specified		← mm		title	
BV	F-22085	LMU	15.10.05	linear		← mm		UNSHR.HEADER	
BW	F-22100	AMA	15.10.08	D.L.E		scale N/A		STR SR TMT	
BX	F-26241	LMU	17.03.01	engr		JM.C		dwg no	
				JM.C		01.01.24		sheet 2 of 3	
BS	B-20169	BVE	15.02.12	chr		JM.C		77311	
BT	B-20497	BVE	15.03.18	pppd		J.F.N		CUSTOMER	
sheet	revision							Drawing	
index	sheet								

Amphenol
 FCI

Looking for pricing, stock, or lifecycle information?

Click below to explore more details on WIN SOURCE:

-  [View 77311-SAE-36LF on WIN SOURCE](#)
-  [Amphenol FCI Information](#)

Optimize Your Supply Chain with WIN SOURCE Solutions

-  Global Sourcing Solution
-  Obsolete Management
-  Cost Control Management
-  Shortage Management
-  Alternative Solution
-  Excess Inventory Management