

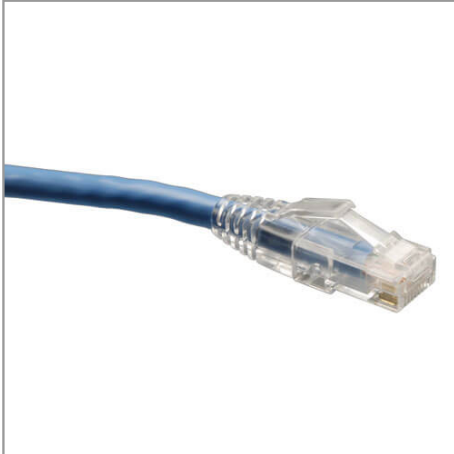


**THE DATASHEET OF
N202-200-BL**



Cat6 Gigabit Solid Conductor Snagless Patch Cable (RJ45 M/M) - Blue, 200-ft.

MODEL NUMBER: **N202-200-BL**



Description

Tripp Lite Solid Conductor 4-pair Cat6 patch cables are ideal for long Ethernet patch cable runs, as well as for use with Tripp Lite's HDMI over Cat6 Audio/Video products. Solid conductor wire has a lower DC resistance, allowing signals to run farther and stronger than stranded conductor patch cables. Unique, snagless boot protects the RJ45 locking tab during cable pulls, yet easily disconnects from attached equipment.

Features

- 200ft Blue Cat6 Solid Conductor patch cable
- Meets Category 6 cabling standards
- Solid Conductor 4 Pair Cable for long distance patch runs
- Drastically reduce impedance and structural return loss compared to Stranded Conductor patch cables
- High-quality copper wire and a shortened body plug design
- Snagless boots protect the locking tabs on the RJ45 connectors from being damaged during installation

Specifications

OVERVIEW	
UPC Code	037332157379
INPUT	
Cable Length (ft.)	200
Cable Length (m)	61

Highlights

- Meets Category 6 cabling standards
- Solid Conductor 4 Pair Cable for long distance patch runs
- Drastically reduce impedance and structural return loss compared to Stranded Conductor patch cables
- High-quality copper wire and a shortened body plug design
- Snagless boots protect the locking tabs on the RJ45 connectors from being damaged during installation

Package Includes

N202-200-BL, 200ft Blue Cat6 Solid Conductor Patch cable



Tripp Lite
1111 W. 35th Street
Chicago, IL 60609 USA
Telephone: 773.869.1234
www.tripplite.com

Cable Length (in.)	2401.6
Cable Length (cm)	6100
PHYSICAL	
Cable Shielding	UTP
Color	Blue
Shipping Dimensions (hwd / cm)	1.27 x 35.56 x 45.72
Shipping Dimensions (hwd / in.)	0.50 x 14.00 x 18.00
Shipping Weight (kg)	2.40
Shipping Weight (lbs.)	5.30
Snagless Connector	Yes
Wire Gauge (AWG)	24
Wire Type	Solid
CONNECTIONS	
Side A - Connector 1	RJ45 (MALE)
Side B - Connector 1	RJ45 (MALE)
FEATURES & SPECIFICATIONS	
Technology	Cat6
CERTIFICATIONS	
Certifications	RoHS Compliant
WARRANTY	
Product Warranty Period (Worldwide)	Lifetime limited warranty

© 2019 Tripp Lite. All rights reserved. All product and company names are trademarks or registered trademarks of their respective holders. Use of them does not imply any affiliation with or endorsement by them. Tripp Lite has a policy of continuous improvement. Specifications are subject to change without notice.

Tripp Lite uses primary and third-party agencies to test its products for compliance with standards. See a list of Tripp Lite's testing agencies:

<https://www.tripplite.com/products/product-certification-agencies>

Looking for pricing, stock, or lifecycle information?

Click below to explore more details on WIN SOURCE:

 [View N202-200-BL on WIN SOURCE](#)

 [Tripp Lite Information](#)

Optimize Your Supply Chain with WIN SOURCE Solutions

-  Global Sourcing Solution
-  Obsolete Management
-  Cost Control Management
-  Shortage Management
-  Alternative Solution
-  Excess Inventory Management