

1SP0635x2x1-33

Data Sheet

Compact, high-performance, plug-and-play single-channel IGBT driver based on SCALE™-2 technology for individual and parallel-connected modules in 2-level, 3-level and multilevel converter topologies

Abstract

The SCALE™-2 plug-and-play driver 1SP0635x2x1-33 is a compact single-channel intelligent gate driver designed for 3300V 130x140mm and 190x140mm IGBT modules. The master driver 1SP0635x2M1-33 features a fiber-optic interface with a built-in isolated DC/DC power supply. It can be used as stand-alone driver or in conjunction with up to three 1SP0635D2S1-33 slaves to drive up to four parallel-connected IGBT modules.

The turn-on and turn-off gate resistors as well as the auxiliary gate capacitor are not assembled in order to provide maximum flexibility. They must be assembled by the user before start of operation. Please refer to the paragraph on "Gate Resistor and Auxiliary Gate Capacitor Assembly" for the recommended values.

For drivers adapted to other types of high-power and high-voltage IGBT modules, refer to:

www.power.com/igbt-driver/go/plug-and-play

Features

- ✓ Plug-and-play solution
- ✓ Allows parallel connection of IGBT modules
- ✓ For 2-level, 3-level and multilevel topologies
- ✓ Built-in isolated DC/DC power supply (master)
- ✓ Fiber-optic links (master)
- ✓ Built-in interface to 1SP0635D2S1 (slave)
- ✓ Duty cycle 0...100%
- ✓ Dynamic Advanced Active Clamping DA²C
- ✓ Dynamic IGBT short-circuit protection
- ✓ Monitoring of supply voltage
- ✓ Monitoring of gate voltage
- ✓ Extremely reliable; long service life
- ✓ Shortens application development time
- ✓ Suitable for 3300V 130x140mm and 190x140mm IGBT modules

Applications

- ✓ Traction
- ✓ Railroad power supplies
- ✓ Light rail vehicles
- ✓ HVDC
- ✓ Flexible AC transmission systems (FACTS)
- ✓ Medium-voltage converters
- ✓ Industrial drives
- ✓ Wind-power converters
- ✓ Medical applications
- ✓ Research
- ✓ And many others

Data Sheet

Safety Notice!

The data contained in this data sheet is intended exclusively for technically trained staff. Handling all high-voltage equipment involves risk to life. Strict compliance with the respective safety regulations is mandatory!

Any handling of electronic devices is subject to the general specifications for protecting electrostatic-sensitive devices according to international standard IEC 60747-1, Chapter IX or European standard EN 100015 (i.e. the workplace, tools, etc. must comply with these standards). Otherwise, this product may be damaged.

Important Product Documentation

This data sheet contains only product-specific data. For a detailed description, must-read application notes and common data that apply to the whole series, please refer to the "Description & Application Manual for 1SP0635 SCALE-2 IGBT Drivers" on www.power.com/igbt-driver/go/1SP0635.

The gate resistors as well as the auxiliary gate capacitor on this gate driver are not assembled in order to provide maximum flexibility. For the values required for specific IGBT modules, refer to the paragraph on "Gate Resistor and Auxiliary Gate Capacitor Assembly". Use of gate resistors and gate auxiliary capacitors other than those specified may result in failure.

Mechanical Dimensions

Dimensions: Refer to the relevant "Description and Application Manual"

Mounting principle: Connected to IGBT module with screws

Fiber-Optic Interfaces (1SP0635x2M1)

Interface	Remarks	Part type #
Drive signal input	1SP0635V, fiber-optic receiver (Notes 1, 2)	HFBR-2522ETZ
Drive signal input	1SP0635S, fiber-optic receiver (Notes 1, 2)	HFBR-2412Z
Status output	1SP0635V, fiber-optic transmitter (Notes 1, 3)	HFBR-1522ETZ
Status output	1SP0635S, fiber-optic transmitter (Notes 1, 3)	HFBR-1412Z

Electrical Connectors

Interface	Remarks	Part type #
Power supply connector X1	1SP0635x2M1, on-board connector (Note 4)	214012
Bus connectors X2 and X3	On-board connectors (Note 5)	214013

Data Sheet

Absolute Maximum Ratings

Parameter	Remarks	Min	Max	Unit
Supply voltage V_{DC}	VDC to GND (1SP0635x2M1)	0	16	V
Average supply current I_{DC}	1SP0635x2M1 only (Note 6)		400	mA
Average supply current I_{DC}	1SP0635x2M1 with three 1SP0635D2S1 (Note 6)		1130	mA
Gate output power	1SP0635x2M1, $T_a < 70^\circ\text{C}$ (Note 7)		3	W
	1SP0635x2M1, $T_a = 85^\circ\text{C}$ (Note 7)		2.2	W
Gate output power	1SP0635D2S1, $T_a < 70^\circ\text{C}$ (Note 8)		2.6	W
	1SP0635D2S1, $T_a = 85^\circ\text{C}$ (Note 8)		2	W
Switching frequency F	1SP0635x2M1, $T_a < 70^\circ\text{C}$ (Note 31)		n.d.	kHz
	1SP0635x2M1, $T_a = 85^\circ\text{C}$ (Note 31)		n.d.	kHz
Switching frequency F	1SP0635D2S1, $T_a < 70^\circ\text{C}$ (Note 31)		n.d.	kHz
	1SP0635D2S1, $T_a = 85^\circ\text{C}$ (Note 31)		n.d.	kHz
Gate peak current I_{out}	Note 9	-35	+35	A
Test voltage (50Hz/1min.)	1SP0635x2M1, primary to secondary (Note 10)		6000	$V_{AC(eff)}$
DC-link voltage	Switching operation (Note 11)		2200	V
	Off state (Note 12)		2700	V
Operating voltage	Primary to secondary side		3300	V_{peak}
Max. emitter-emitter voltage	Between parallel connected drivers (Note 13)		200	V_{peak}
dV/dt	Between parallel connected drivers (Note 14)		50	kV/ μs
Max. interface current	X2 and X3, total RMS value (Note 15)		4	A_{rms}
	X2 and X3, total peak value (Note 15)		20	A_{peak}
Operating temperature		-40	+85	$^\circ\text{C}$
Storage temperature		-40	+90	$^\circ\text{C}$

Recommended Operating Conditions

Power Supply	Remarks	Min	Typ	Max	Unit
Supply voltage V_{DC}	To GND	14.5	15	15.5	V

Data Sheet

Electrical Characteristics

All data refer to +25°C and $V_{DC} = 15V$ unless otherwise specified

Power Supply	Remarks	Min	Typ	Max	Unit
Supply current I_{DC}	Without load, only 1SP0635x2M1		120		mA
	Without load, per additional 1SP0635D2S1		35		mA
Coupling capacitance C_{io}	1SP0635x2M1, DC/DC converter		15		pF
Power Supply Monitoring	Remarks	Min	Typ	Max	Unit
Supply threshold $V_{iso}-V_{ee}$	Secondary side, clear fault	12.1	12.6	13.1	V
	Secondary side, set fault (Note 16)	11.5	12.0	12.5	V
Monitoring hysteresis	Secondary side, set/clear fault	0.35			V
Supply threshold $V_{ee}-V_{COM}$	Secondary side, clear fault	5	5.15	5.3	V
	Secondary side, set fault (Note 16)	4.7	4.85	5	V
Monitoring hysteresis	Secondary side, set/clear fault	0.15			V
Bus to 1SP0635D2S1	Remarks	Min	Typ	Max	Unit
Supply voltage	Without load		25		V
	With three slaves, full load		24		V
Turn-off command	To COM		0		V
Turn-on command	To COM		15		V
Gate Monitoring	Remarks	Min	Typ	Max	Unit
Turn-on threshold $V_{GE,on,min}$	G_{mean} to E, set fault (Note 17)		12.9		V
Turn-off threshold $V_{GE,off,max}$	G_{mean} to E, set fault (Note 17)		-7.6		V
Filter delay	Note 17		28		µs
Short-circuit Protection	Remarks	Min	Typ	Max	Unit
Static Vce-monitoring threshold	Between auxiliary terminals (Note 18)		143		V
Response time	DC-link voltage = 2200V (Note 19)		5.9		µs
	DC-link voltage = 1500V (Note 19)		6.0		µs
	DC-link voltage = 1100V (Note 19)		6.2		µs
	DC-link voltage = 800V (Note 19)		8.3		µs
	DC-link voltage = 800V (Note 19)		8.3		µs
Delay to IGBT turn-off	After the response time (Note 20)		0.3		µs
Timing Characteristics	Remarks	Min	Typ	Max	Unit
Turn-on delay $t_{d(on)}$	Note 21		190		ns
Turn-off delay $t_{d(off)}$	Note 21		185		ns

Data Sheet

Timing Characteristics	Remarks	Min	Typ	Max	Unit
Output rise time $t_{r(out)}$	G to E (Note 22)		9		ns
Output fall time $t_{f(out)}$	G to E (Note 22)		30		ns
Transmission delay of fault state	Note 23		90		ns
Delay to clear fault state	After IGBT short circuit (Note 24)		9		μ s
	After gate-monitoring fault (Notes 24, 30)		1		μ s
Acknowledge delay time	Note 25		250		ns
Acknowledge pulse width	On host side	400	700	1050	ns
Gate Output	Remarks	Min	Typ	Max	Unit
Turn-on gate resistor $R_{g(on)}$	Note 26		not assembled		Ω
Turn-off gate resistor $R_{g(off)}$	Note 26		not assembled		Ω
Auxiliary gate capacitor C_{ge}	Note 26		not assembled		nF
Gate voltage at turn-on	Note 27		15		V
Gate-voltage at turn-off	Without load (Note 27)		-10.1		V
	$P_{DC/DC} = 3W$ (Note 27)		-9.8		V
	$P_{DC/DC} = 6W$ (Note 27)		-9.5		V
	$P_{DC/DC} = 12W$ (Note 27)		-9		V
Electrical Isolation	Remarks	Min	Typ	Max	Unit
Test voltage (50Hz/1s)	Primary to secondary side (Note 10)	6000	6050	6100	$V_{AC(eff)}$
Partial discharge extinction volt.	Primary to secondary side (Note 28)	3630			V_{peak}
Creepage distance	Primary to secondary side (Note 29)	21			mm
	Primary to IGBT main emitter terminal	20			mm
Clearance distance	Primary to secondary side (Note 29)	21			mm
	Primary to IGBT main emitter terminal	13			mm

Footnotes to the Key Data

- 1) The transceivers required on the host controller side are not supplied with the gate driver. It is recommended to use the same types as used in the gate driver. For product information refer to www.power.com/igbt-driver/go/fiberoptics.
- 2) The recommended transmitter current at the host controller is 20mA. A higher current may increase jitter or delay at turn-off.
- 3) The typical transmitter current at the gate driver is 18mA. In case of supply undervoltage, the minimum transmitter current at the gate driver is 12mA: this is suitable for adequate plastic optical fibers with a length of up to 10 meters.
- 4) This refers to the manufacturer ordering number, see www.power.com/igbt-driver/go/ext_erni. The customer-side connector as well as cables with different lengths can be supplied by Power Integrations. Refer to the "Description & Application Manual for 1SP0635 SCALE-2 IGBT Drivers" for more information.
- 5) This refers to the manufacturer ordering number, see www.power.com/igbt-driver/go/ext_erni. These connectors are to be used to connect 1SP0635x2M1 (master) or 1SP0635D2S1 (slave) to 1SP0635D2S1 (slave) if parallel connection of IGBT modules is required. Cables with different lengths can be supplied by Power Integrations. Refer to the "Description & Application Manual for 1SP0635 SCALE-2 IGBT Drivers" for more information.
- 6) If the specified value is exceeded, this indicates a driver overload. It should be noted that the driver is not protected against overload.

Data Sheet

- 7) The given power can only be fully exploited without slaves 1SP0635D2S1 (no parallel connection of IGBT modules). If the specified value is exceeded, this indicates a driver overload. It should be noted that the driver is not protected against overload. From 70°C to 85°C, the maximum permissible output power can be linearly interpolated from the given data.
- 8) The given power can be fully exploited with slaves 1SP0635D2S1 (parallel connection of IGBT modules). If the specified value is exceeded, this indicates a driver overload. It should be noted that the driver is not protected against overload. From 70°C to 85°C, the maximum permissible output power can be linearly interpolated from the given data. Note that the DC/DC converter on the master 1SP0635x2M1 is dimensioned to supply the master as well as three connected slaves 1SP0635D2S1 at full load.
- 9) The gate current is limited by the gate resistors located on the driver.
- 10) HiPot testing (= dielectric testing) must generally be restricted to suitable components. This gate driver is suited for HiPot testing. Nevertheless, it is strongly recommended to limit the testing time to 1s slots. Excessive HiPot testing may lead to insulation degradation.
- 11) This limit is due to active clamping under switching conditions. Refer to the "Description & Application Manual for 1SP0635 SCALE-2 IGBT Drivers".
- 12) Due to the Dynamic Active Advanced Clamping Function (DA²C) implemented on the driver, the DC-link voltage can be increased in the off-state condition (e.g. after emergency shut-down). This value is only valid when the IGBTs are in the off state (not switching). The time during which the voltage can be applied should be limited to short periods (< 60 seconds). Refer to the "Description & Application Manual for 1SP0635 SCALE-2 IGBT Drivers".
- 13) The maximum dynamic voltage between auxiliary emitters of parallel-connected drivers due to asymmetrical operation at turn-on and turn-off must be limited to the given value.
- 14) Maximum allowed rate of change between auxiliary emitter voltages of parallel connected drivers.
- 15) Dynamic voltages between auxiliary emitters of parallel connected drivers at turn-on and turn-off lead to equalizing currents over the X2 or X3 bus. The peak and RMS values of the resulting current must be limited to the given value.
- 16) Undervoltage monitoring of the secondary-side supply voltage (Viso to Vee and Vee to COM which correspond with the approximate turn-on and turn-off gate-emitter voltages). If the corresponding voltage drops below this limit on 1SP0635x2M1 (masters), all paralleled IGBTs (master and slaves) are switched off and a fault is transmitted to the status output. If the corresponding voltage drops below this limit on 1SP0635D2S1 (slaves), the corresponding IGBT is switched off. A fault will be generated by the gate-monitoring function on the master which will turn off all paralleled IGBTs after the corresponding delay.
- 17) The mean value $V_{GE,mean}$ of all gate voltages (master and all slaves) is filtered and compared to the given values at turn-on and turn-off. If the specified values are exceeded ($V_{GE,mean} < V_{GE,on,min}$ at turn-on resp. $V_{GE,mean} > V_{GE,off,max}$ at turn-off) after the given filter delay, the driver turns off all parallel-connected IGBTs and a fault is transmitted to the status output.
- 18) A dynamic Vce protection is implemented on the driver. The maximum allowed Vce voltage at turn-on is dynamically adjusted in order to better fit the IGBT characteristics at turn-on. At the end of the turn-on process, the given static value applies.
- 19) The resulting pulse width of the direct output of the gate drive unit for short-circuit type I (excluding the delay of the gate resistors) is the sum of the response time plus the delay to IGBT turn-off.
- 20) The turn-off event of the IGBT is delayed by the specified time after the response time.
- 21) Including the delay of the external fiber-optic links (cable length: 1m). Measured from the transition of the turn-on or turn-off command at the optical transmitter on the host controller side to the direct output of the gate drive unit (excluding the delay of the gate resistors).
- 22) Output rise and fall times are measured between 10% and 90% of the nominal output swing. The values are given for the driver side of the gate resistors with 2Ω/1μF load. The time constant of the output load in conjunction with the present gate resistors leads to an additional delay at their load side.
- 23) Delay of external fiber-optic links. Measured from the driver secondary side (ASIC output) to the optical receiver on the host controller (cable length: 1m).
- 24) Measured on the host side. The fault status on the secondary side is automatically reset after the specified time.

Data Sheet

- 25) Including the delay of the external fiber-optic links (cable length: 1m). Measured from the transition of the turn-on or turn-off command at the optical transmitter on the host controller side to the transition of the acknowledge signal at the optical receiver on the host controller side.
- 26) The gate resistors and the auxiliary gate capacitor are not assembled on this IGBT gate driver. They must be assembled by the user according to the paragraph on "Gate Resistor and Auxiliary Gate Capacitor Assembly".
- 27) The driver secondary side voltage is split into two distinct voltages on the driver. The first one is the turn-on voltage which is regulated at about 15V. The difference between the total secondary side voltage and the turn-on voltage is the turn-off voltage which is not regulated and mainly dependent on the driver input voltage VDC and the DC/DC converter power.
- 28) Partial discharge measurement (transformer only) is performed in accordance with IEC 60270.
- 29) Clearance and creepage distances are designed according to IEC 60077-1. Refer to the "Description & Application Manual for 1SP0635 SCALE-2 IGBT Drivers" for more information.
- 30) The fault status is set as long as the gate monitoring fault is present. The given value applies if the driver goes from the "off state" to the "on state" and the gate-emitter voltage of one or more parallel connected drivers does not turn on. If the driver goes from the "on state" to the "off state" and the gate-emitter voltage of one or more parallel connected drivers does not turn off, the fault status is applied as long as the gate monitoring fault is present.
- 31) The maximum switching frequency is not defined, as it depends on the IGBT module used. Please consult the corresponding driver data sheet for more information.

Data Sheet

Gate Resistor and Auxiliary Gate Capacitor Assembly

The turn-on and turn-off gate resistors as well as the auxiliary gate capacitor of 1SP0635x2x1 drivers are adapted to their respective IGBT modules.

Recommended gate resistors (R168, R169, R178 and R179): PR02 / 2W / 5% from Vishay.

Recommended auxiliary gate capacitor (C105): 1206 / X7R / 25V / 5%

The following versions exist:

3300V IGBT Type	R178/ R179	R168/ R169	Resulting Rg,on	Resulting Rg,off	C105
FZ800R33KF2C FD800R33KF2C FD800R33KF2C-K	2.7Ω	4.7Ω	1.35Ω	2.35Ω	150nF
5SNA0800N330100 5SNE0800E330100	4.7Ω	6.8Ω	2.35Ω	3.4Ω	not assembled
DIM800NSM33-F000 TIM800NSM33	5.6Ω	18Ω	2.8Ω	9Ω	220nF
1MBI800UG-330	5.1Ω	7.5Ω	2.55Ω	3.75Ω	not assembled
CM800HC-66H	7.5Ω	7.5Ω	3.75Ω	3.75Ω	330nF
DIM1000NSM33-TS000 TIM1000NSM33-TS000	4.3Ω	4.3Ω	2.15Ω	2.15Ω	220nF
FZ1000R33HE3	1.5Ω	6.8Ω	0.75Ω	3.4Ω	220nF
FZ1000R33HL3	1.5Ω	12Ω	0.75Ω	6Ω	220nF
CM1000HC-66R	5.1Ω	18Ω	2.55Ω	9Ω	not assembled
5SNA1000N330300	3Ω	4.7Ω	1.5Ω	2.35Ω	220nF
5SNA1200E330100	3Ω	4.7Ω	1.5Ω	2.35Ω	not assembled
DIM1200ESM33-F000 TIM1200ESM33	3.3Ω	10Ω	1.65Ω	5Ω	330nF
1MBI1200UE-330	3.3Ω	4.7Ω	1.65Ω	2.35Ω	not assembled
MBN1200E33D	6.8Ω	10Ω	3.4Ω	5Ω	not assembled
MBN1200E33E	8.2Ω	12Ω	4.1Ω	6Ω	not assembled
FZ1200R33KF2C	1.8Ω	3.6Ω	0.9Ω	1.8Ω	220nF
FZ1200R33HE3	1.3Ω	6.8Ω	0.65Ω	3.4Ω	220nF
CM1200HC-66H	3.9Ω	5.1Ω	1.95Ω	2.55Ω	330nF
5SNA1500E330300	2Ω	4.7Ω	1Ω	2.35Ω	220nF
5SNA1500E330305	2Ω	5.6Ω	1Ω	2.8Ω	330nF
DIM1500ESM33-TS000	3.3Ω	4.7Ω	1.65Ω	2.35Ω	330nF
1MBI1500UE-330	3.3Ω	4.3Ω	1.65Ω	2.15Ω	not assembled
1MBI1500UE-330B	1Ω	3Ω	0.5Ω	1.5Ω	220nF

Data Sheet

3300V IGBT Type	R178/ R179	R168/ R169	Resulting Rg,on	Resulting Rg,off	C105
MBN1500E33E2	5.6Ω	8.2Ω	2.8Ω	4.1Ω	330nF
FZ1500R33HE3	1Ω	4.7Ω	0.5Ω	2.35Ω	330nF
FZ1500R33HL3	1Ω	6.8Ω	0.5Ω	3.4Ω	330nF
YMIF1500-33	4.7Ω	8.2Ω	2.35Ω	4.1Ω	330nF
CM1500HC-66R	3.3Ω	16Ω	1.65Ω	8Ω	not assembled
MG1500FXF1US62	3Ω	6.8Ω	1.5Ω	3.4Ω	not assembled
MBN1800F33F	10Ω	13Ω	5Ω	6.5Ω	not assembled
CM1800HC-66X	3Ω	24Ω	1.5Ω	12Ω	not assembled

For the component position, refer to Figs. 1 and 2.

Assembly Drawing

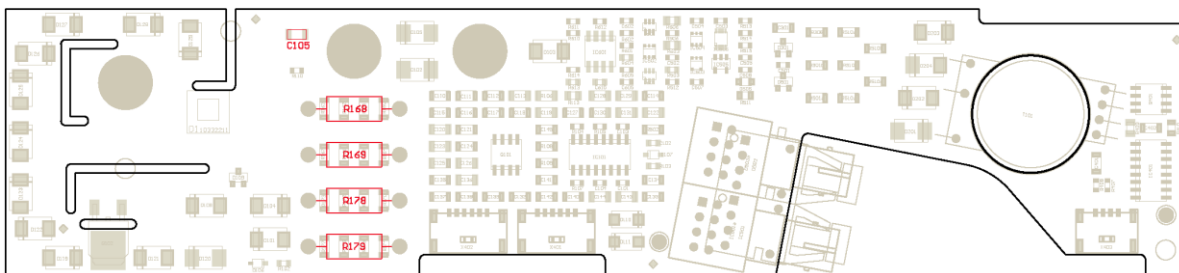


Fig. 1: Assembly drawing of 1SP0635x2M1 with highlighted gate resistors

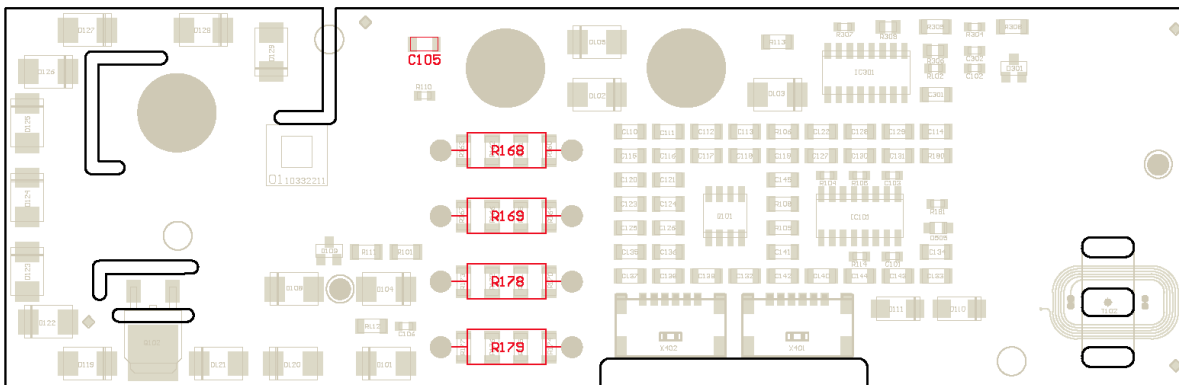


Fig. 2: Assembly drawing of 1SP0635D2S1 with highlighted gate resistors

Note that the wires of the gate resistors should not project more than 1.6mm after soldering (excess length at bottom side). Furthermore, a minimum distance of 1mm must be maintained between the gate resistor body and the PCB.

Data Sheet

Legal Disclaimer

The statements, technical information and recommendations contained herein are believed to be accurate as of the date hereof. All parameters, numbers, values and other technical data included in the technical information were calculated and determined to our best knowledge in accordance with the relevant technical norms (if any). They may base on assumptions or operational conditions that do not necessarily apply in general. We exclude any representation or warranty, express or implied, in relation to the accuracy or completeness of the statements, technical information and recommendations contained herein. No responsibility is accepted for the accuracy or sufficiency of any of the statements, technical information, recommendations or opinions communicated and any liability for any direct, indirect or consequential loss or damage suffered by any person arising therefrom is expressly disclaimed.

Data Sheet

Ordering Information

Our international terms and conditions of sale apply.

Interface	Power Integrations Driver Type #	Related IGBT
Master, Fiber-Optic Interface ¹⁾	1SP0635V2M1-33	3300V IGBT modules
Master, Fiber-Optic Interface ²⁾	1SP0635S2M1-33	3300V IGBT modules
Slave, Electrical Interface	1SP0635D2S1-33	3300V IGBT modules

¹⁾ Fiber-optic interface with versatile link (HFBR-2522ETZ and HFBR-1522ETZ)

²⁾ Fiber-optic interface with ST (HFBR-2412Z and HFBR-1412Z)

See "Description & Application Manual for 1SP0635 SCALE-2 IGBT Drivers"

Product home page: www.power.com/igbt-driver/go/1SP0635

Refer to www.power.com/igbt-driver/go/nomenclature for information on driver nomenclature

Information about Other Products

For other drivers, evaluation systems, product documentation and application support

Please click onto: www.power.com/igbt-driver

Data Sheet

Power Integrations Sales Offices
WORLD HEADQUARTERS

5245 Hellyer Avenue
San Jose, CA 95138 USA
Tel: +1-408-414-9200
Fax: +1-408-414-9765
Email: usasales@power.com

AMERICAS WEST

5245 Hellyer Avenue
San Jose, CA 95138 USA
Tel: +1-408-414-8778
Fax: +1-408-414-3760
Email: usasales@power.com

GERMANY (AC-DC/LED Sales)

Lindwurmstrasse 114
80337 München, Germany
Tel: +49-89-5527-39100
Fax: +49-89-1228-5374
Email: eurosales@power.com

INDIA (Mumbai)

Unit: 106-107, Sagar Tech Plaza-B
Sakinaka, Andheri Kurla Road
Mumbai, Maharashtra 400072 India
Tel 1: +91-22-4003-3700
Tel 2: +91-22-4003-3600
Email: indiasales@power.com

JAPAN

Kosei Dai-3 Bldg.
2-12-11, Shin-Yokohama, Kohoku-ku
Yokohama-shi, Kanagawa
Japan 222-0033
Tel: +81-45-471-1021
Fax: +81-45-471-3717
Email: japansales@power.com

TAIWAN

5F, No. 318, Nei Hu Rd., Sec. 1
Nei Hu Dist.
Taipei, 114 Taiwan
Tel: +886-2-2659-4570
Fax: +886-2-2659-4550
Email: taiwansales@power.com

AMERICAS EAST

7360 McGinnis Ferry Road
Suite 225
Suwannee, GA 30024 USA
Tel: +1-678-957-0724
Fax: +1-678-957-0784
Email: usasales@power.com

CHINA (Shanghai)

Room 2410, Charity Plaza
No. 88 North Caoxi Road
Shanghai, 200030 China
Tel: +86-21-6354-6323
Fax: +86-21-6354-6325
Email: chinasales@power.com

GERMANY (Gate Driver Sales)

HellwegForum 1
59469 Ense, Germany
Tel: +49-2938-64-39990
Email: igbt-driver.sales@power.com

INDIA (New Dehli)

#45, Top Floor
Okhla Industrial Area, Phase - III
New Dehli, 110020 India
Tel 1: +91-11-4055-2351
Tel 2: +91-11-4055-2353
Email: indiasales@power.com

KOREA

RM602, 6FL, 22
Teheran-ro 87-gil, Gangnam-gu
Seoul, 06164 Korea
Tel: +82-2-2016-6610
Fax: +82-2-2016-6630
Email: koreasales@power.com

UNITED KINGDOM

Bulding 5, Suite 21
The Westbrook Centre
Milton Road
Cambridge, CB4 1YG United Kingdom
Tel: +44-7823-557-484
Email: eurosales@power.com

AMERICAS CENTRAL

333 Sheridan Road
Winnetka, IL 60093 USA
Tel: +1-847-721-6293
Email: usasales@power.com

CHINA (Shenzhen)

17/F, Hivac Building, No 2
Keji South 8th Road, Nanshan District
Shenzhen, 518057 China
Tel: +86-755-8672-8689
Fax: +86-755-8672-8690
Email: chinasales@power.com

INDIA (Bangalore)

#1, 14th Main Road
Vasanthangar
Bangalore, 560052 India
Tel 1: +91-80-4113-8020
Tel 2: +91-80-4113-8028
Fax: +91-80-4113-8023
Email: indiasales@power.com

ITALY



Via Milanese 20
20099 Sesto San Giovanni (MI), Italy
Tel: +39-02-4550-8708
Email: eurosales@power.com

SINGAPORE

51 Newton Road
#19-01/05 Goldhill Plaza
Singapore, 308900
Tel 1: +65-6358-2160
Tel 2: +65-6358-4480
Fax: +65-6358-2015
Email: singaporesales@power.com

Looking for pricing, stock, or lifecycle information?

Click below to explore more details on WIN SOURCE:

-  [View 1SP0635V2M1-33 on WIN SOURCE](#)
-  [Power Integrations](#) Information

Optimize Your Supply Chain with WIN SOURCE Solutions

-  Global Sourcing Solution
-  Obsolete Management
-  Cost Control Management
-  Shortage Management
-  Alternative Solution
-  Excess Inventory Management