



**THE DATASHEET OF  
1977066-1**



REVISIONS			
P	DATE	DATE	DATE
1	18.JUL.2017	SK	AS
2			
3			
4			
5			
6			

**SPECIFICATIONS:**

MATERIALS: CASE, PPA, U94W-0, BLACK FINISH  
 ACTUATOR, PPA, U94HB, IVORY FINISH  
 BRACKET, STEEL, TIN FINISH  
 MOVING CONTACT, STAINLESS STEEL, SILVER FINISH  
 FIXED CONTACT/TERMINAL, COPPER ALLOY, SILVER OVER NICKEL FINISH

**ELECTRICAL:**

MAX CONTACT RATING, 50MA@ 12VDC  
 MIN CONTACT RATING, 10MICROAMP@1V DC  
 INITIAL CONTACT RESISTANCE, 500 MILLIOHMS MAX  
 INSULATION RESISTANCE, 100 MEGOHM MIN  
 DIELECTRIC STRENGTH, 500 V AC FOR 1 MINUTE  
 CONTACT BOUNCE, LESS THAN 10 MILLISECOND  
 LIFE EXPECTANCY, 100,000 CYCLES

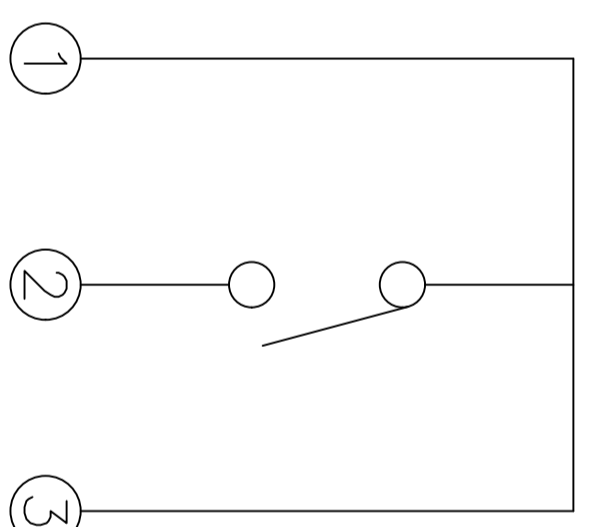
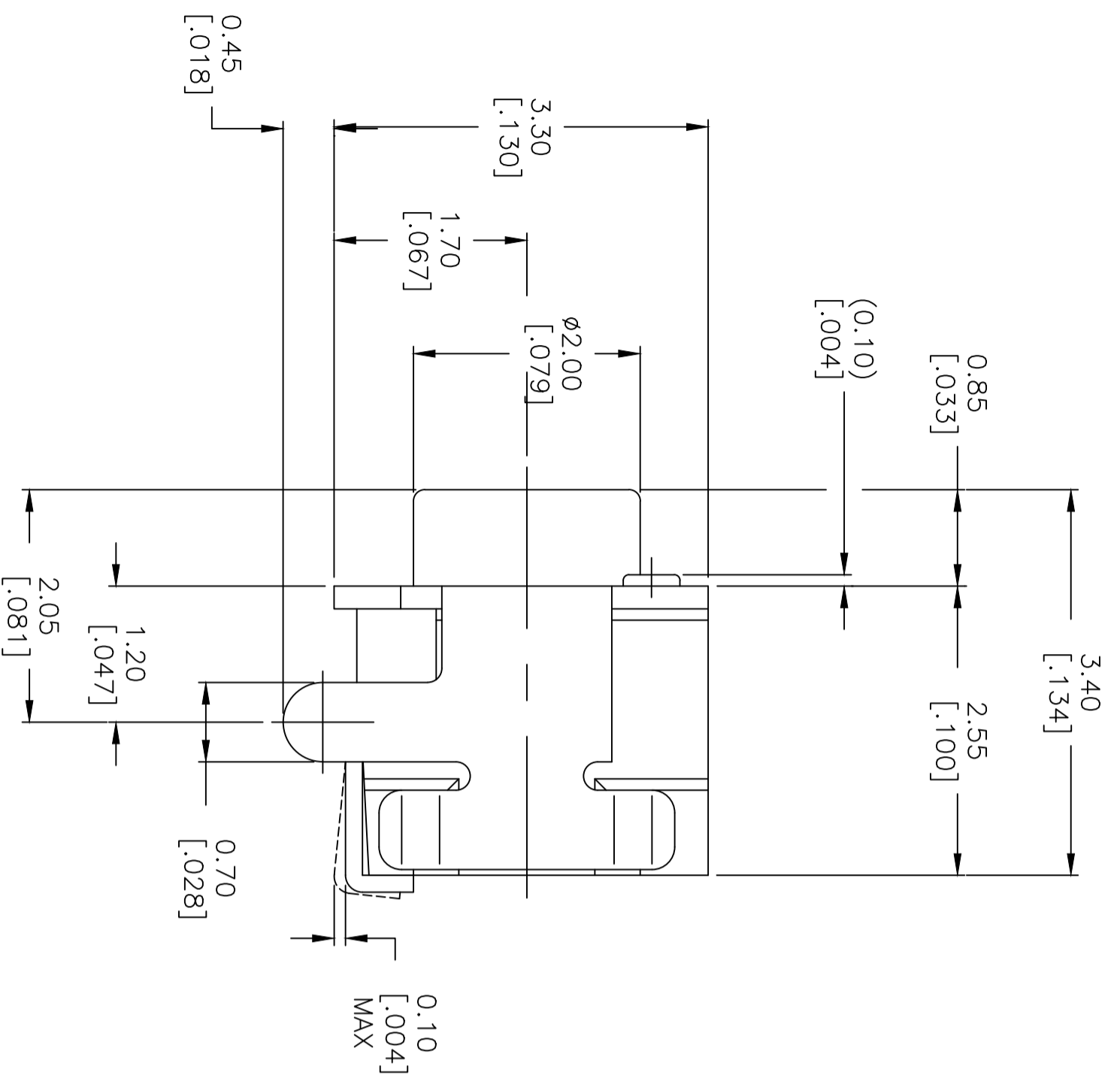
**MECHANICAL:**

ACTUATION FORCE, 160 +/-50GF  
 ACTUATION TRAVEL, .20 +/- .10 MM  
 LIFE EXPECTANCY, 100,000 CYCLES MIN

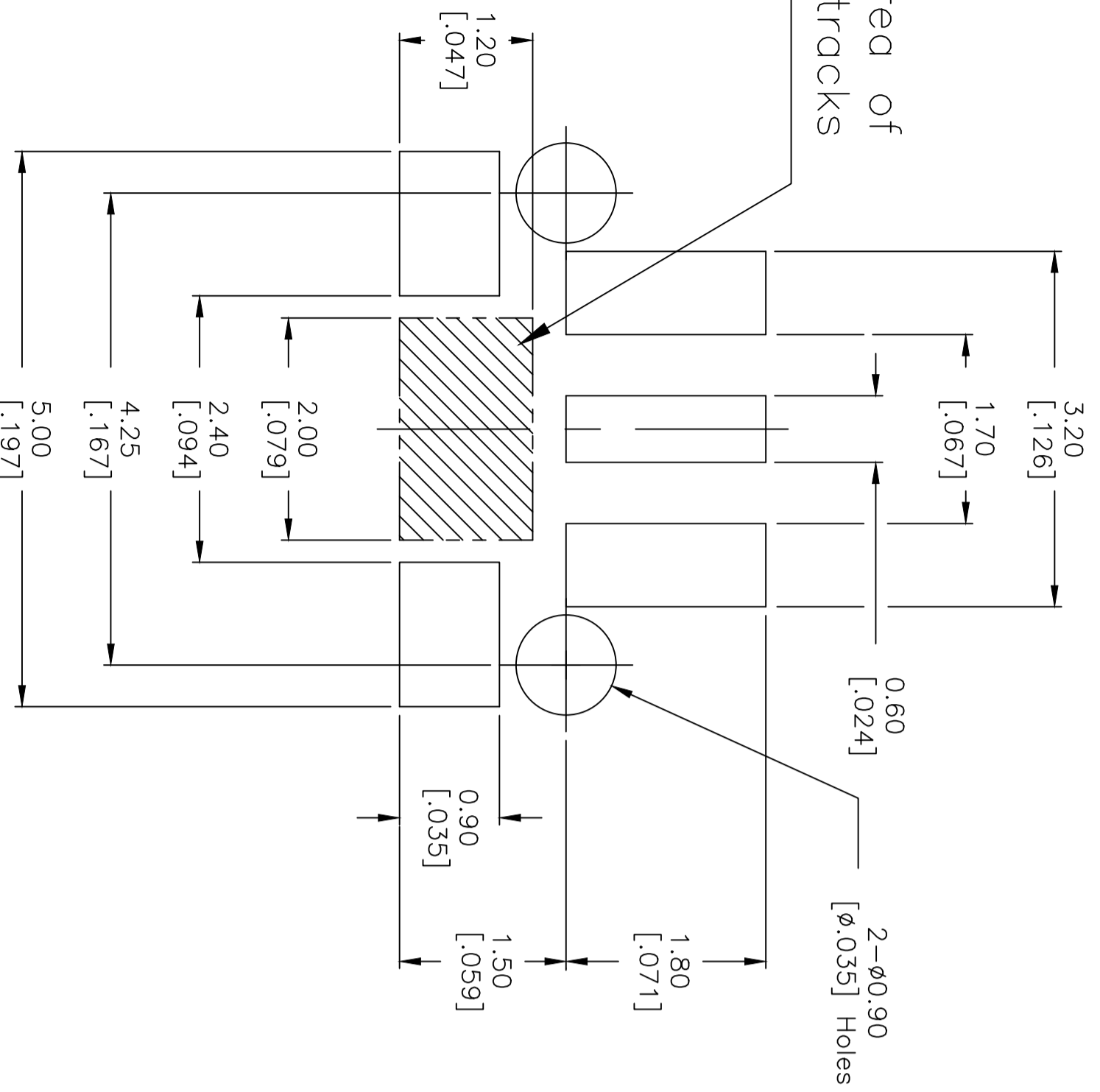
**ENVIRONMENTAL:**

OPERATING TEMPERATURE, -35 TO +85 DEGREES C  
 STORAGE TEMPERATURE, -35 TO +85 DEGREES C  
 THERMAL SHOCK, PER EIA-364-32C, -35 TO +85 DEGREES C  
 SOLDERABILITY, PER EIA-364-52, CLASS 2, CATEGORY 1, TEMP, 245 DEGREES C MAX, TIME, 2.5 SECONDS  
 MAX 95% MINIMUM COVERAGE  
 RESISTANCE TO SOLDER HEAT, PER 109-201, CONDITION B  
 1. NO CHANGE IN INITIAL ELECTRICAL AND MECHANICAL CHARACTERISTICS

1 ALL MATERIALS AND FINISHES SHALL COMPLY WITH EU DIRECTIVE  
 2002/95/EC OF 27JAN2003 (ROHS)



**CIRCUIT DIAGRAM**



hibited area of  
copper tracks

**P.C.B MOUNTING SOLDER LAND DIMENSION**

1977066-1  
 PART NUMBER

THIS DRAWING IS A CONTROLLED DOCUMENT.		Q68A02207	DATE	18.JUL.2017	DATE	18.JUL.2017	DATE	18.JUL.2017	
DRUM NUMBER	Q68A02207	NAME	TE Connectivity	DESCRIPTION	R/A TACT SWITCH SMT W/ LOCATING PEGS	DATE	18.JUL.2017	DATE	18.JUL.2017
PRODUCT SPEC	AP70	APPLICATION SPEC		SIZE	A1	QAE CODE	00779	DRAWING NO	1977066
WEIGHT		RESTRICTED TO		SCALE	20:1	SHEET	1	OF	2
									REV C1



TE Connectivity



Looking for pricing, stock, or lifecycle information?

Click below to explore more details on WIN SOURCE:

- [View 1977066-1 on WIN SOURCE](#)
- [TE Connectivity Information](#)

### Optimize Your Supply Chain with WIN SOURCE Solutions

- ✓ Global Sourcing Solution
- ✓ Obsolete Management
- ✓ Cost Control Management
- ✓ Shortage Management
- ✓ Alternative Solution
- ✓ Excess Inventory Management