

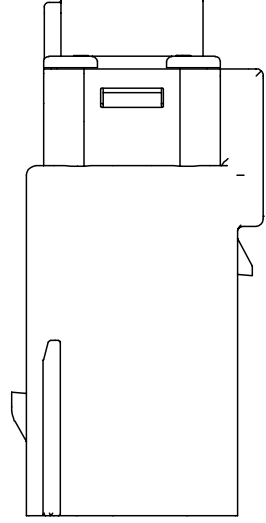
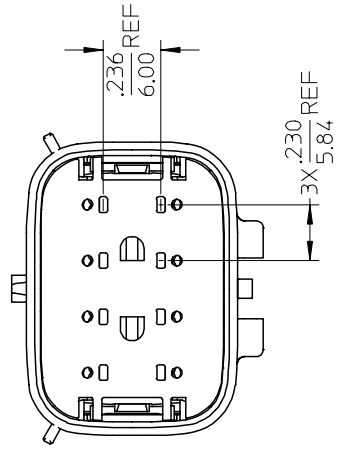


THE DATASHEET OF
19419-0002



10 9 8 7 6 5 4 3

F

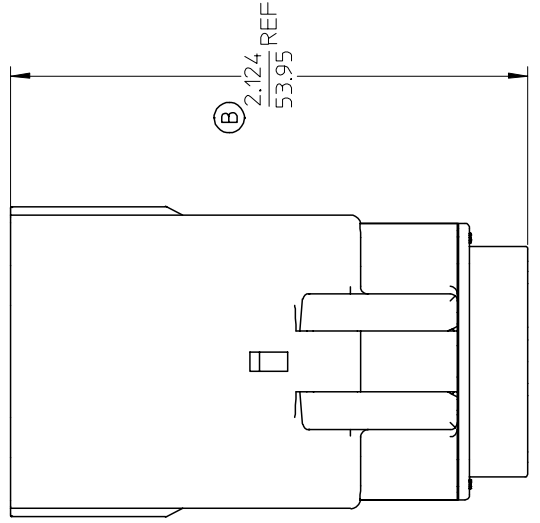


(B)



2

D



(B)

2.124 REF
53.95

C

ASSEMBLY
SC7

194190002

194190001

B

MATERIAL NUMBER

DESIGN UNITS

INCH

TITLE

GENERAL TOLERANCES
(UNLESS SPECIFIED)

4 PLACES ± .005

3 PLACES ± .01

2 PLACES ± 0.13 ± .01

1 PLACE ± 0.25 ± .01

ANGULAR ± 1/2°

DRAFT WHERE APPLICABLE
MUST REMAIN
WITHIN DIMENSIONS

DRAFT WHERE APPLICABLE
MUST REMAIN
WITHIN DIMENSIONS

QUALITY SYMBOLS



REV	DESCRIPTION
B	EC NO: ETC2004-0202 DRW:DMYRICK 2004/06/03 CHKD:JPAWLIC 2004/06/03 APP:JPAWLIC 2004/06/03

SCALE 2:1

DESIGN UNITS INCH

TITLE

GENERAL TOLERANCES (UNLESS SPECIFIED)

4 PLACES ± .005

3 PLACES ± .01

2 PLACES ± 0.13 ± .01

1 PLACE ± 0.25 ± .01

ANGULAR ± 1/2°

DRAFT WHERE APPLICABLE MUST REMAIN WITHIN DIMENSIONS

DRAFT WHERE APPLICABLE MUST REMAIN WITHIN DIMENSIONS

NOTES:

1. ASSEMBLY BULK PACKAGED PER PK-19419-001
2. MOUNTING SLOT DIMENSIONS.
3. USE CONNECTOR WITH MALE CRIMP TERMINAL: SERIES 19417.

fb_frame-B
rev. B1 2000/08/01

THIS DRAWING CONTAINS INFORMATION INCORPORATED AND SHOULD NOT BE USED IN ISOLATION

194190002

194190001

MATERIAL NUMBER

DESIGN UNITS

INCH

TITLE

GENERAL TOLERANCES (UNLESS SPECIFIED)

4 PLACES ± .005

3 PLACES ± .01

2 PLACES ± 0.13 ± .01

1 PLACE ± 0.25 ± .01

ANGULAR ± 1/2°

DRAFT WHERE APPLICABLE MUST REMAIN WITHIN DIMENSIONS

DRAFT WHERE APPLICABLE MUST REMAIN WITHIN DIMENSIONS

QUALITY SYMBOLS

REV

DESCRIPTION

B

EC NO: ETC2004-0202

DRW:DMYRICK 2004/06/03

CHKD:JPAWLIC 2004/06/03

APP:JPAWLIC 2004/06/03

SCALE 2:1

DESIGN UNITS INCH

TITLE

GENERAL TOLERANCES (UNLESS SPECIFIED)

4 PLACES ± .005

3 PLACES ± .01

2 PLACES ± 0.13 ± .01

1 PLACE ± 0.25 ± .01

ANGULAR ± 1/2°

DRAFT WHERE APPLICABLE MUST REMAIN WITHIN DIMENSIONS

DRAFT WHERE APPLICABLE MUST REMAIN WITHIN DIMENSIONS

QUALITY SYMBOLS

REV

DESCRIPTION

B

EC NO: ETC2004-0202

DRW:DMYRICK 2004/06/03

CHKD:JPAWLIC 2004/06/03

APP:JPAWLIC 2004/06/03

SCALE 2:1

DESIGN UNITS INCH

TITLE

GENERAL TOLERANCES (UNLESS SPECIFIED)

4 PLACES ± .005

3 PLACES ± .01

2 PLACES ± 0.13 ± .01

1 PLACE ± 0.25 ± .01

ANGULAR ± 1/2°

DRAFT WHERE APPLICABLE MUST REMAIN WITHIN DIMENSIONS

DRAFT WHERE APPLICABLE MUST REMAIN WITHIN DIMENSIONS

QUALITY SYMBOLS

REV

DESCRIPTION

B

EC NO: ETC2004-0202

DRW:DMYRICK 2004/06/03

CHKD:JPAWLIC 2004/06/03

APP:JPAWLIC 2004/06/03

SCALE 2:1

DESIGN UNITS INCH

TITLE

GENERAL TOLERANCES (UNLESS SPECIFIED)

4 PLACES ± .005

3 PLACES ± .01

2 PLACES ± 0.13 ± .01

1 PLACE ± 0.25 ± .01

ANGULAR ± 1/2°

DRAFT WHERE APPLICABLE MUST REMAIN WITHIN DIMENSIONS

DRAFT WHERE APPLICABLE MUST REMAIN WITHIN DIMENSIONS

QUALITY SYMBOLS

REV

DESCRIPTION

B

EC NO: ETC2004-0202

DRW:DMYRICK 2004/06/03

CHKD:JPAWLIC 2004/06/03

APP:JPAWLIC 2004/06/03

SCALE 2:1

DESIGN UNITS INCH

TITLE

GENERAL TOLERANCES (UNLESS SPECIFIED)

4 PLACES ± .005

3 PLACES ± .01

2 PLACES ± 0.13 ± .01

1 PLACE ± 0.25 ± .01

ANGULAR ± 1/2°

DRAFT WHERE APPLICABLE MUST REMAIN WITHIN DIMENSIONS

DRAFT WHERE APPLICABLE MUST REMAIN WITHIN DIMENSIONS

QUALITY SYMBOLS

REV

DESCRIPTION

B

EC NO: ETC2004-0202

DRW:DMYRICK 2004/06/03

CHKD:JPAWLIC 2004/06/03

APP:JPAWLIC 2004/06/03

SCALE 2:1

DESIGN UNITS INCH

TITLE

GENERAL TOLERANCES (UNLESS SPECIFIED)

4 PLACES ± .005

3 PLACES ± .01

2 PLACES ± 0.13 ± .01

1 PLACE ± 0.25 ± .01

ANGULAR ± 1/2°

DRAFT WHERE APPLICABLE MUST REMAIN WITHIN DIMENSIONS

DRAFT WHERE APPLICABLE MUST REMAIN WITHIN DIMENSIONS

QUALITY SYMBOLS

REV

DESCRIPTION

B

EC NO: ETC2004-0202

DRW:DMYRICK 2004/06/03

CHKD:JPAWLIC 2004/06/03

APP:JPAWLIC 2004/06/03

SCALE 2:1

DESIGN UNITS INCH

TITLE

GENERAL TOLERANCES (UNLESS SPECIFIED)

4 PLACES ± .005

3 PLACES ± .01

2 PLACES ± 0.13 ± .01

1 PLACE ± 0.25 ± .01

ANGULAR ± 1/2°

DRAFT WHERE APPLICABLE MUST REMAIN WITHIN DIMENSIONS

DRAFT WHERE APPLICABLE MUST REMAIN WITHIN DIMENSIONS

QUALITY SYMBOLS

REV

DESCRIPTION

B

EC NO: ETC2004-0202

DRW:DMYRICK 2004/06/03

CHKD:JPAWLIC 2004/06/03

APP:JPAWLIC 2004/06/03

SCALE 2:1

DESIGN UNITS INCH

TITLE

GENERAL TOLERANCES (UNLESS SPECIFIED)

4 PLACES ± .005

3 PLACES ± .01

2 PLACES ± 0.13 ± .01

1 PLACE ± 0.25 ± .01

ANGULAR ± 1/2°

DRAFT WHERE APPLICABLE MUST REMAIN WITHIN DIMENSIONS

DRAFT WHERE APPLICABLE MUST REMAIN WITHIN DIMENSIONS

QUALITY SYMBOLS

REV

DESCRIPTION

B

EC NO: ETC2004-0202

DRW:DMYRICK 2004/06/03

CHKD:JPAWLIC 2004/06/03

APP:JPAWLIC 2004/06/03

SCALE 2:1

DESIGN UNITS INCH

TITLE

GENERAL TOLERANCES (UNLESS SPECIFIED)

4 PLACES ± .005

3 PLACES ± .01

2 PLACES ± 0.13 ± .01

1 PLACE ± 0.25 ± .01

ANGULAR ± 1/2°

DRAFT WHERE APPLICABLE MUST REMAIN WITHIN DIMENSIONS

DRAFT WHERE APPLICABLE MUST REMAIN WITHIN DIMENSIONS

QUALITY SYMBOLS

REV

DESCRIPTION

B

EC NO: ETC2004-0202

DRW:DMYRICK 2004/06/03

CHKD:JPAWLIC 2004/06/03

APP:JPAWLIC 2004/06/03

SCALE 2:1

DESIGN UNITS INCH

TITLE

GENERAL TOLERANCES (UNLESS SPECIFIED)

4 PLACES ± .005

3 PLACES ± .01

2 PLACES ± 0.13 ± .01

1 PLACE ± 0.25 ± .01

ANGULAR ± 1/2°

DRAFT WHERE APPLICABLE MUST REMAIN WITHIN DIMENSIONS

DRAFT WHERE APPLICABLE MUST REMAIN WITHIN DIMENSIONS

QUALITY SYMBOLS

REV

DESCRIPTION

B

EC NO: ETC2004-0202

DRW:DMYRICK 2004/06/03

CHKD:JPAWLIC 2004/06/03

Looking for pricing, stock, or lifecycle information?

Click below to explore more details on WIN SOURCE:

 [View 19419-0002 on WIN SOURCE](#)

 [Molex, LLC Information](#)

Optimize Your Supply Chain with WIN SOURCE Solutions

-  Global Sourcing Solution
-  Obsolete Management
-  Cost Control Management
-  Shortage Management
-  Alternative Solution
-  Excess Inventory Management