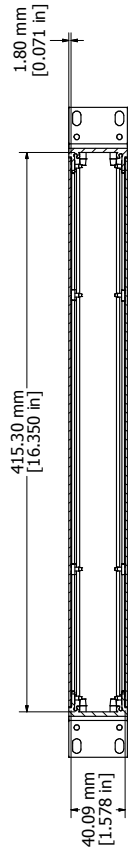




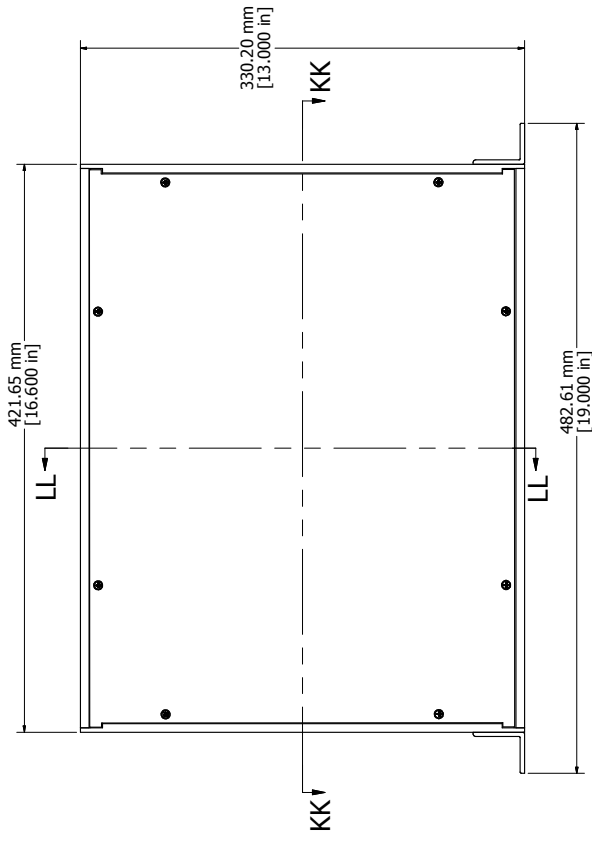
**THE DATASHEET OF
RM1U1913SBK**



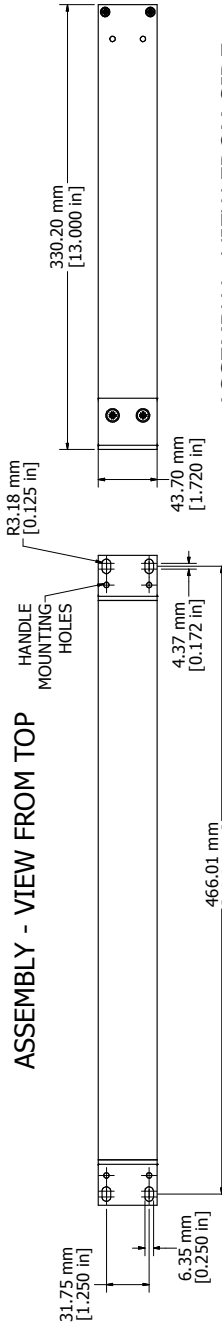
3 4 5 6 7 8



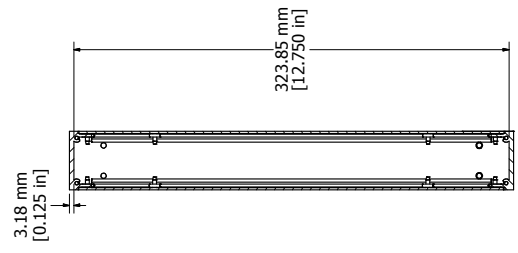
SECTION KK-KK



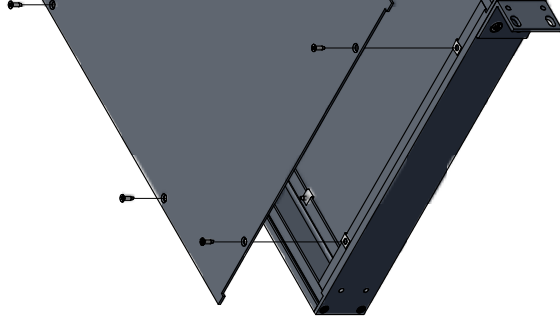
ASSEMBLY - VIEW FROM TOP



ASSEMBLY - VIEW FROM FRONT



SECTION LL-LL



Extruded Aluminum
2 Panels - .064"
2 Mounting Brackets
16 Screws - Flat
8 Screws - Countersunk
4 Screws - Countersunk
16 Nuts - #4 Special
Four Self Adhesive
PULL HANDLE





Enclosures can be Factory Modified (Milling, Drilling, Printing etc.)
 Contact Factory mjm@hammondmtg.com for quotes
 Solid models of this enclosure available in STEP or IGES.

3 4 5 6 7 8

Looking for pricing, stock, or lifecycle information?

Click below to explore more details on WIN SOURCE:

-  [View RM1U1913SBK on WIN SOURCE](#)
-  [Hammond Manufacturing Information](#)

Optimize Your Supply Chain with WIN SOURCE Solutions

-  Global Sourcing Solution
-  Obsolete Management
-  Cost Control Management
-  Shortage Management
-  Alternative Solution
-  Excess Inventory Management