



THE DATASHEET OF
1571983-5



3

2

1

REVISIONS				
P	LTR	DESCRIPTION	DATE	DMN
C4		REVISED PER ECO-15-015778	05NOV2015	NK
C5		REVISED PER ECO-16-018654	15MAY2017	RK
C6		REVISED PER ECO-17-007191	26MAY2017	PO

SPECIFICATIONS:

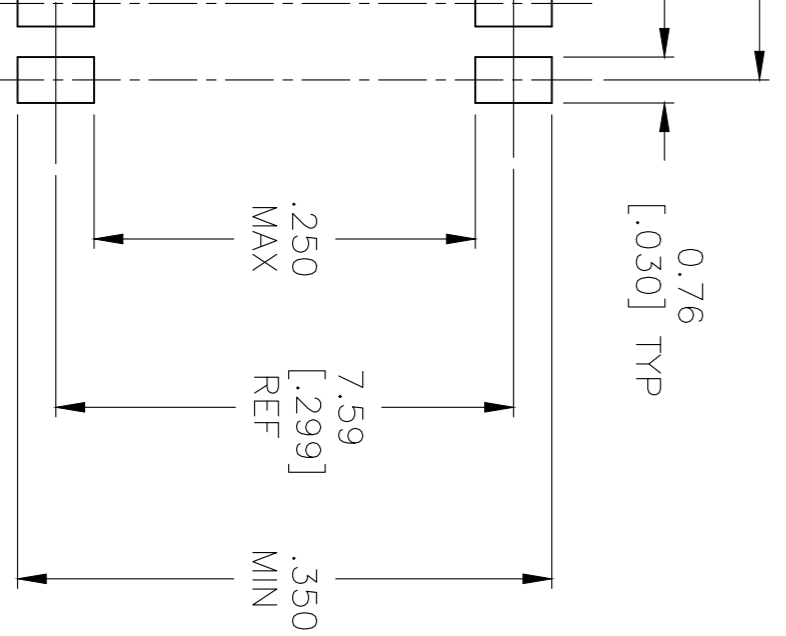
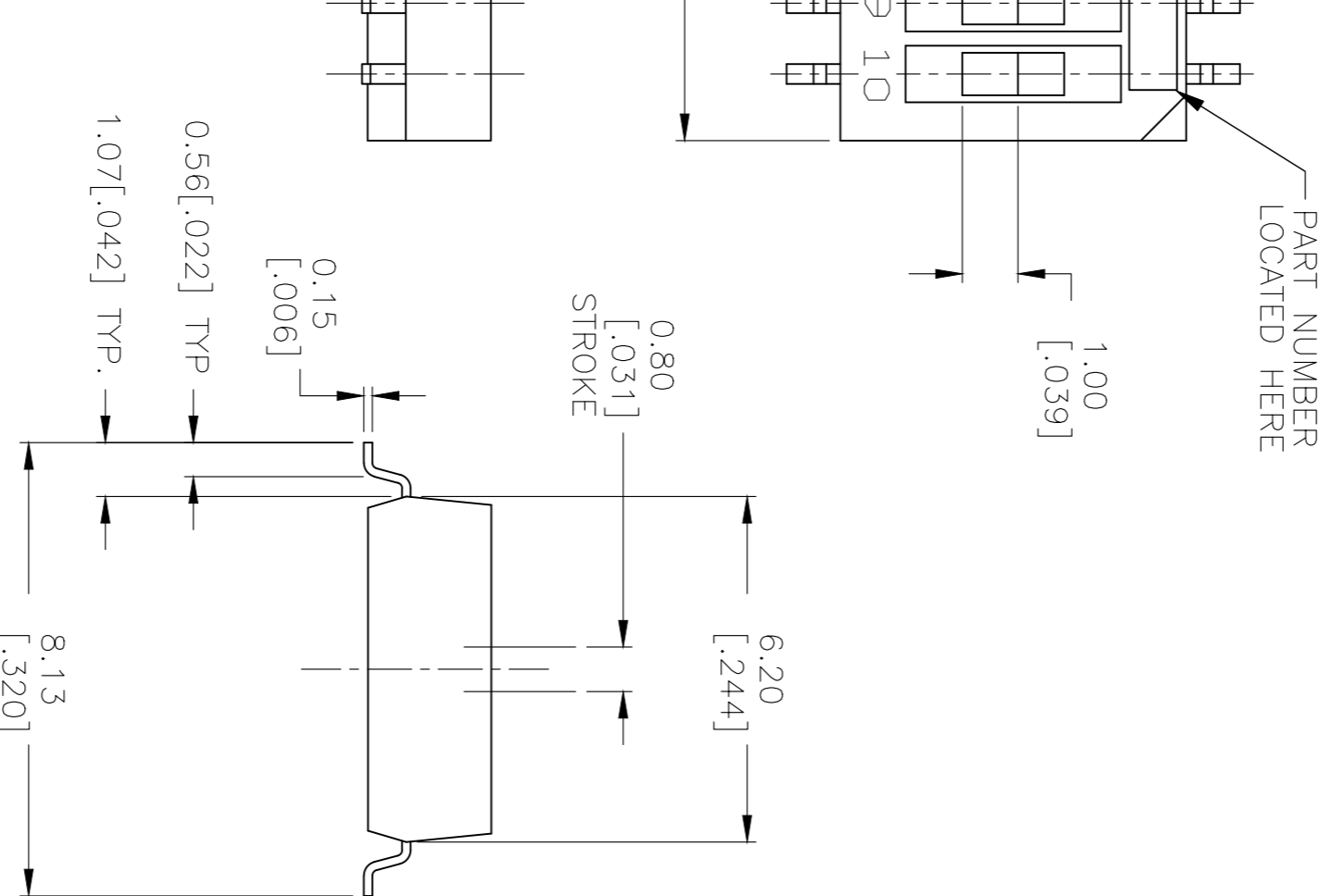
MATERIALS:

BASE: PPS UL94V-0
COVER: PPS UL94V-0
ACTUATOR: LCP UL94V-0
MOVING CONTACT: COPPER ALLOY, GOLD OVER NICKEL PLATE
FIXED CONTACT/TERMINAL: COPPER ALLOY, GOLD OVER NICKEL PLATE
ELECTRICAL:
CONTACT RATING: NON-SWITCHING, 100mA @ 50 VDC
SWITCHING: 25mA @ 24 VDC.

INITIAL CONTACT RESISTANCE: 100mA MAX. @ 2 VDC, 10 mA.
INSULATION RESISTANCE: 100 MEGOHMS MIN. @ 100 VDC.
DIELECTRIC STRENGTH: 300 VAC, 1 MINUTE.
LIFE: 1,000 CYCLES.

MECHANICAL:

OPERATING FORCE: 600G MAX.
ENVIRONMENTAL:
OPERATING TEMPERATURE: -22°F TO +185°F (-30°C TO +85°C).
STORAGE TEMPERATURE: -49°F TO +212°F (-45°C TO +100°C).
SOLDER HEAT RESISTANCE PER 109-201, CONDITION B
SOLDERABILITY PER JIS C 0050 & JIS C 0053



- 1 PARTS WITH 'ON' SUFFIX SUPPLIED IN THE ON POSITION.
- 2 SUPPLIED WITH TAPE SEAL STANDARD.
- 3 FOR TAPE AND REEL PACKAGING- PART NO. GDHXXSTR SEE MODEL NUMBER CHART BELOW.
- 4 FOR NO SEAL OPTION = NS.
- 5 ALL MATERIALS AND FINISHES SHALL COMPLY WITH EU DIRECTIVE 2002/95/EC OF 27 JAN 2003 (ROHS)
- 6 OBSOLETE PARTS: OBSOLETE CIS STREAMLINING PER D.RENAUD/D.SINISI

1	6.35 [.250]	8.74 [.344]	6	TAPE	GDH06STRON04	1-1571983-7
	11.43 [.450]	13.82 [.544]	10	NONE	GDH010STRNS04	1-1571983-6
1	1.27 [.050]	3.66 [.144]	2	TAPE	GDH02STRON04	1-1571983-5
	11.43 [.450]	13.82 [.544]	10	TAPE	GDH010STR04	1-1571983-4
	11.43 [.450]	13.82 [.544]	10	TAPE	GDH010S04	1-1571983-3
4	8.89 [.350]	11.28 [.444]	8	TAPE	GDH08STR04	1-1571983-1
	8.89 [.350]	11.28 [.444]	8	TAPE	GDH08S04	1-1571983-0
	6.35 [.250]	8.74 [.344]	6	TAPE	GDH06STR04	1571983-9
	6.35 [.250]	8.74 [.344]	6	TAPE	GDH06S04	1571983-8
	3.81 [.150]	6.20 [.244]	4	TAPE	GDH04STRON04	1571983-7
4	3.81 [.150]	6.20 [.244]	4	NONE	GDH04STRNS04	1571983-6
	3.81 [.150]	6.20 [.244]	4	TAPE	GDH04STR04	1571983-5
	3.81 [.150]	6.20 [.244]	4	TAPE	GDH04S04	1571983-4
	1.27 [.050]	3.66 [.144]	2	TAPE	GDH02STR04	1571983-3
	1.27 [.050]	3.66 [.144]	2	TAPE	GDH02SON04	1571983-2
	1.27 [.050]	3.66 [.144]	2	TAPE	GDH02S04	1571983-1
				M	L	
				POLE	SEAL	OLD T&B P/N

THIS DRAWING IS A CONTROLLED DOCUMENT.

DMN	R. BROWN	15MAR05	NAME	STE	TE Connectivity
CHK	M. SARVER	15MAR05	AP'D	M. SARVER	DIP SWITCH
AP'D	M. SARVER	15MAR05	PRODUCT SPEC		GDH SERIES
TOLERANCES UNLESS OTHERWISE SPECIFIED:			APPLICATION SPEC	SIZE	QAGE CODE
0 PLC	±			A2	00779
1 PLC	±				1571983
2 PLC	±	0.25 [.010]			
3 PLC	±				
4 PLC	±				
FINISH			WEIGHT	SCALE	SHEET
				8:1	1 OF 2
			CUSTOMER DRAWING	RESTRICTED TO	REV C6

1571983

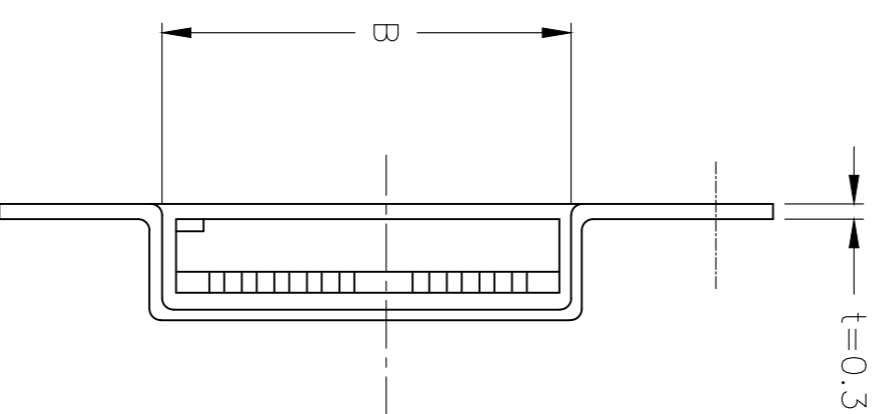
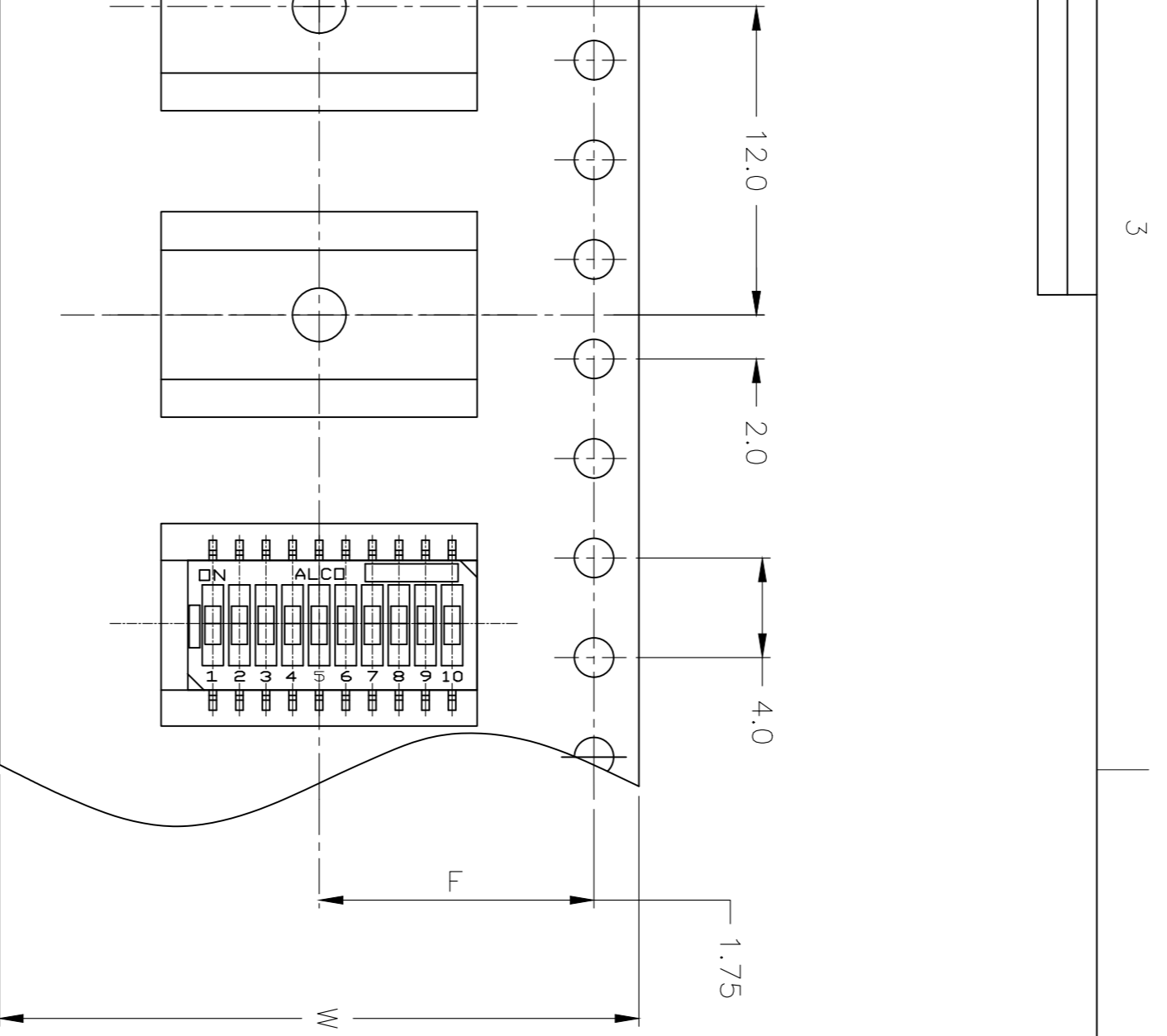
B

C

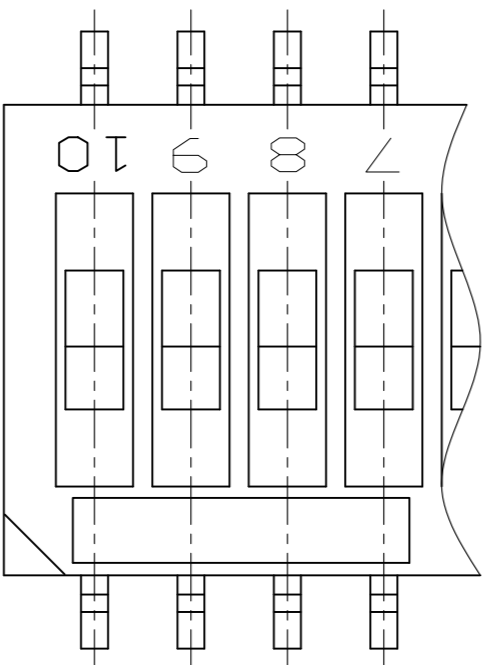
D

A

REVISIONS				
P	LTR	DESCRIPTION	DATE	DWN / AP'D
-	-	SEE SHEET 1	-	-



→ DIRECTION OF FEED



NO. OF POS.	DIMENSION		
	W	F	B
2P	16.0	7.5	4.45
4P			7.0
6P	24.0	11.5	9.55
8P			12.1
10P			14.6

1571983

THIS DRAWING IS A CONTROLLED DOCUMENT.

DIMENSIONS: mm [INCHES]	TOLERANCES UNLESS OTHERWISE SPECIFIED:	DWN R. BROWN	15MAR05	 TE Connectivity DIP SWITCH GDH SERIES
0 PLC	±	CHK M. SARVER	15MAR05	
1 PLC	±	AP'D M. SARVER	15MAR05	
2 PLC	± 0.25 [0.01]	PRODUCT SPEC		
3 PLC	±	APPLICATION SPEC		SIZE A2
4 PLC	±	WEIGHT		QAGE CODE 00779
FINISH	± 1°	CUSTOMER DRAWING		DRAWING NO 1571983
				SCALE 8:1
				SHEET 2 of 2
				REV C6

A

B

C

D

3

2

1

Looking for pricing, stock, or lifecycle information?

Click below to explore more details on WIN SOURCE:

[View 1571983-5 on WIN SOURCE](#)

[TE Connectivity Information](#)

Optimize Your Supply Chain with WIN SOURCE Solutions

- ✓ Global Sourcing Solution
- ✓ Obsolete Management
- ✓ Cost Control Management
- ✓ Shortage Management
- ✓ Alternative Solution
- ✓ Excess Inventory Management