



THE DATASHEET OF
1-1571983-3



REVISIONS					
P	LTR	DESCRIPTION	DATE	DMN	APP'D
C4		REVISED PER ECO-15-015778	05NOV2015	NK	RH
C5		REVISED PER ECO-16-018654	15MAY2017	RK	PO
C6		REVISED PER ECO-17-007191	26MAY2017	RK	PO

SPECIFICATIONS:

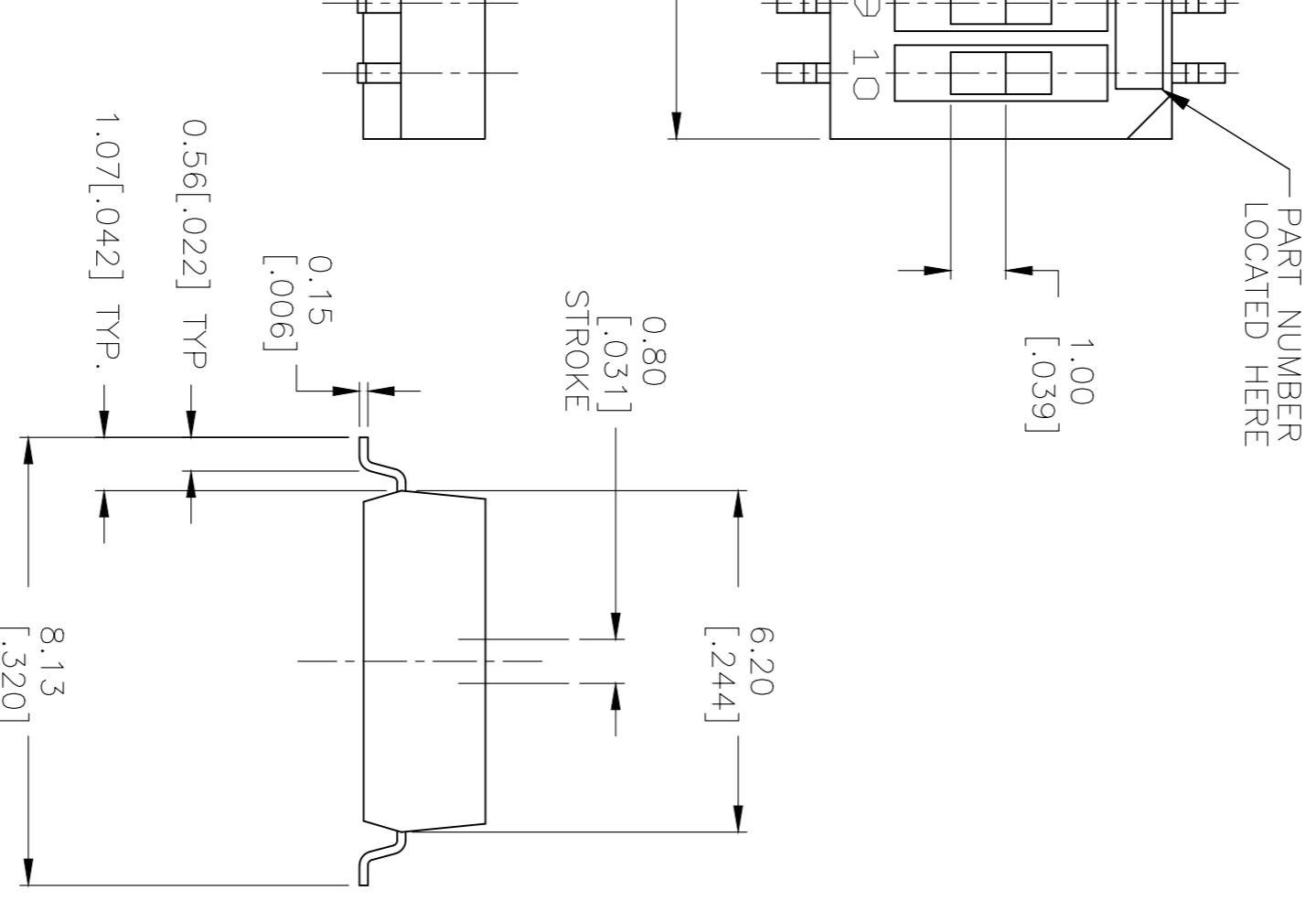
MATERIALS:

BASE: PPS UL94V-0
 COVER: PPS UL94V-0
 ACTUATOR: LCP UL94V-0
 MOVING CONTACT: COPPER ALLOY, GOLD OVER NICKEL PLATE
 FIXED CONTACT/TERMINAL: COPPER ALLOY, GOLD OVER NICKEL PLATE
 ELECTRICAL:
 CONTACT RATING: NON-SWITCHING, 100mA @ 50 VDC
 SWITCHING: 25mA @ 24 VDC.

INITIAL CONTACT RESISTANCE: 100mA MAX. @ 2 VDC, 10 mA.
 INSULATION RESISTANCE: 100 MEGOHMS MIN. @ 100 VDC.
 DIELECTRIC STRENGTH: 300 VAC, 1 MINUTE.
 LIFE: 1,000 CYCLES.

MECHANICAL:

OPERATING FORCE: 600G MAX.
 ENVIRONMENTAL:
 OPERATING TEMPERATURE: -22°F TO +185°F (-30°C TO +85°C).
 STORAGE TEMPERATURE: -49°F TO +212°F (-45°C TO +100°C).
 SOLDER HEAT RESISTANCE PER 109-201, CONDITION B
 SOLDERABILITY PER JIS C 0050 & JIS C 0053



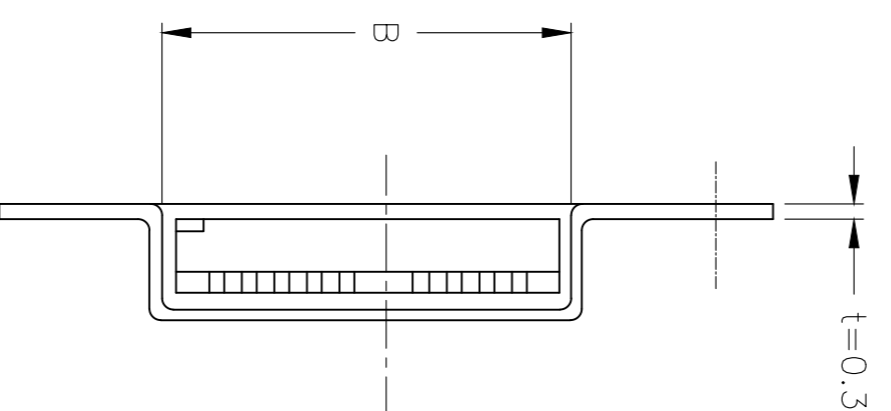
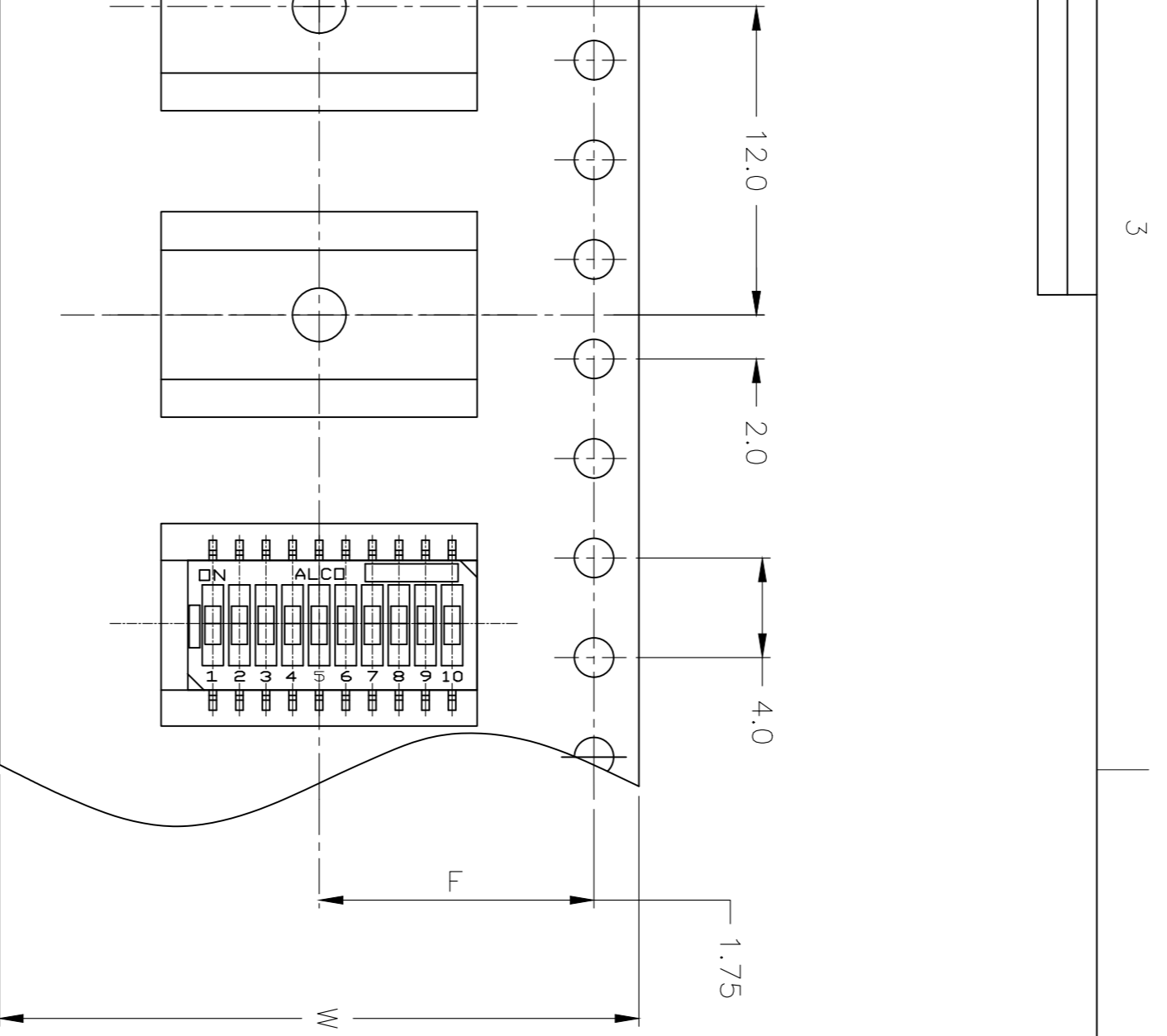
1	PARTS WITH 'ON' SUFFIX SUPPLIED IN THE ON POSITION. SUPPLIED WITH TAPE SEAL STANDARD.	6.35 [.250]	8.74 [.344]	6	TAPE	GDH06STRON04	1-1571983-7
		11.43 [.450]	13.82 [.544]	10	NONE	GDH010STRNS04	1-1571983-6
1	FOR TAPE AND REEL PACKAGING- PART NO. GDHXXSTR SEE MODEL NUMBER CHART BELOW. FOR NO SEAL OPTION = NS.	1.27 [.050]	3.66 [.144]	2	TAPE	GDH02STRON04	1-1571983-5
		11.43 [.450]	13.82 [.544]	10	TAPE	GDH010STR04	1-1571983-4
4	ALL MATERIALS AND FINISHES SHALL COMPLY WITH EU DIRECTIVE 2002/95/EC OF 27 JAN 2003 (ROHS) OBSOLETE PARTS: OBSOLETE CIS STREAMLINING PER D.RENAUD/D.SINISI	11.43 [.450]	13.82 [.544]	10	TAPE	GDH010S04	1-1571983-3
		8.89 [.350]	11.28 [.444]	8	TAPE	GDH08STRNS04	1-1571983-2
4	OBSOLETE	8.89 [.350]	11.28 [.444]	8	TAPE	GDH08STR04	1-1571983-1
		8.89 [.350]	11.28 [.444]	8	TAPE	GDH08S04	1-1571983-0
1	OBSOLETE	6.35 [.250]	8.74 [.344]	6	TAPE	GDH06S04	1571983-8
		3.81 [.150]	6.20 [.244]	4	TAPE	GDH04STRON04	1571983-7
4	OBSOLETE	3.81 [.150]	6.20 [.244]	4	NONE	GDH04STRNS04	1571983-6
		3.81 [.150]	6.20 [.244]	4	TAPE	GDH04STR04	1571983-5
4	OBSOLETE	3.81 [.150]	6.20 [.244]	4	TAPE	GDH04S04	1571983-4
		1.27 [.050]	3.66 [.144]	2	TAPE	GDH02STR04	1571983-3
1	OBSOLETE	1.27 [.050]	3.66 [.144]	2	TAPE	GDH02SON04	1571983-2
		1.27 [.050]	3.66 [.144]	2	TAPE	GDH02S04	1571983-1
		M	L	POLE	SEAL	OLD T&B P/N	PART NUMBER

THIS DRAWING IS A CONTROLLED DOCUMENT.

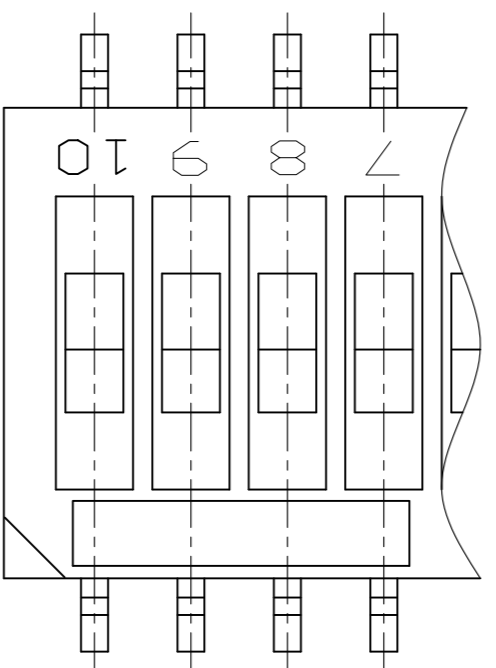
DMN	R. BROWN	15MAR05	NAME	TE Connectivity
CHK	M. SARVER	15MAR05	SIZE	A2
APP'D	M. SARVER	15MAR05	QAGE CODE	00779
TOLERANCES UNLESS OTHERWISE SPECIFIED:		DRAWING NO. 1571983		
0 PLC	±	PRODUCT SPEC	SCALE	8:1
1 PLC	±	APPLICATION SPEC	SHEET	1 OF 2
2 PLC	±	WEIGHT	REV	C6
3 PLC	±	CUSTOMER DRAWING	RESTRICTED TO	
4 PLC	±			

MATERIAL: - FINISH: - ANGLES: ± 1°

REVISIONS				
P	LTR	DESCRIPTION	DATE	DWN / AP'D
-	-	SEE SHEET 1	-	-



→ DIRECTION OF FEED



NO. OF POS.	DIMENSION		
	W	F	B
2P	16.0	7.5	4.45
4P			7.0
6P	24.0	11.5	9.55
8P			12.1
10P			14.6

1571983

THIS DRAWING IS A CONTROLLED DOCUMENT.			
DIMENSIONS: mm [INCHES]		TOLERANCES UNLESS OTHERWISE SPECIFIED:	
	0 PLC	±	-
	1 PLC	±	-
	2 PLC	±	0.25 [0.01]
	3 PLC	±	-
	4 PLC	±	-
MATERIAL		FINISH	
-		-	
DWN	R. BROWN	15MAR05	TE Connectivity
CHK	M. SARVER	15MAR05	
AP'D	M. SARVER	15MAR05	
PRODUCT SPEC		NAME	
APPLICATION SPEC		DIP SWITCH GDH SERIES	
WEIGHT		SIZE	RESTRICTED TO
-		A2	
CUSTOMER DRAWING		QAGE CODE	
		00779	
		1571983	
		SCALE	
		8:1	
		SHEET	
		2 of 2	
		REV	
		C6	

A

B

C

D

3

2

1

Looking for pricing, stock, or lifecycle information?

Click below to explore more details on WIN SOURCE:

[View 1-1571983-3 on WIN SOURCE](#)

[TE Connectivity Information](#)

Optimize Your Supply Chain with WIN SOURCE Solutions

- ✓ Global Sourcing Solution
- ✓ Obsolete Management
- ✓ Cost Control Management
- ✓ Shortage Management
- ✓ Alternative Solution
- ✓ Excess Inventory Management