

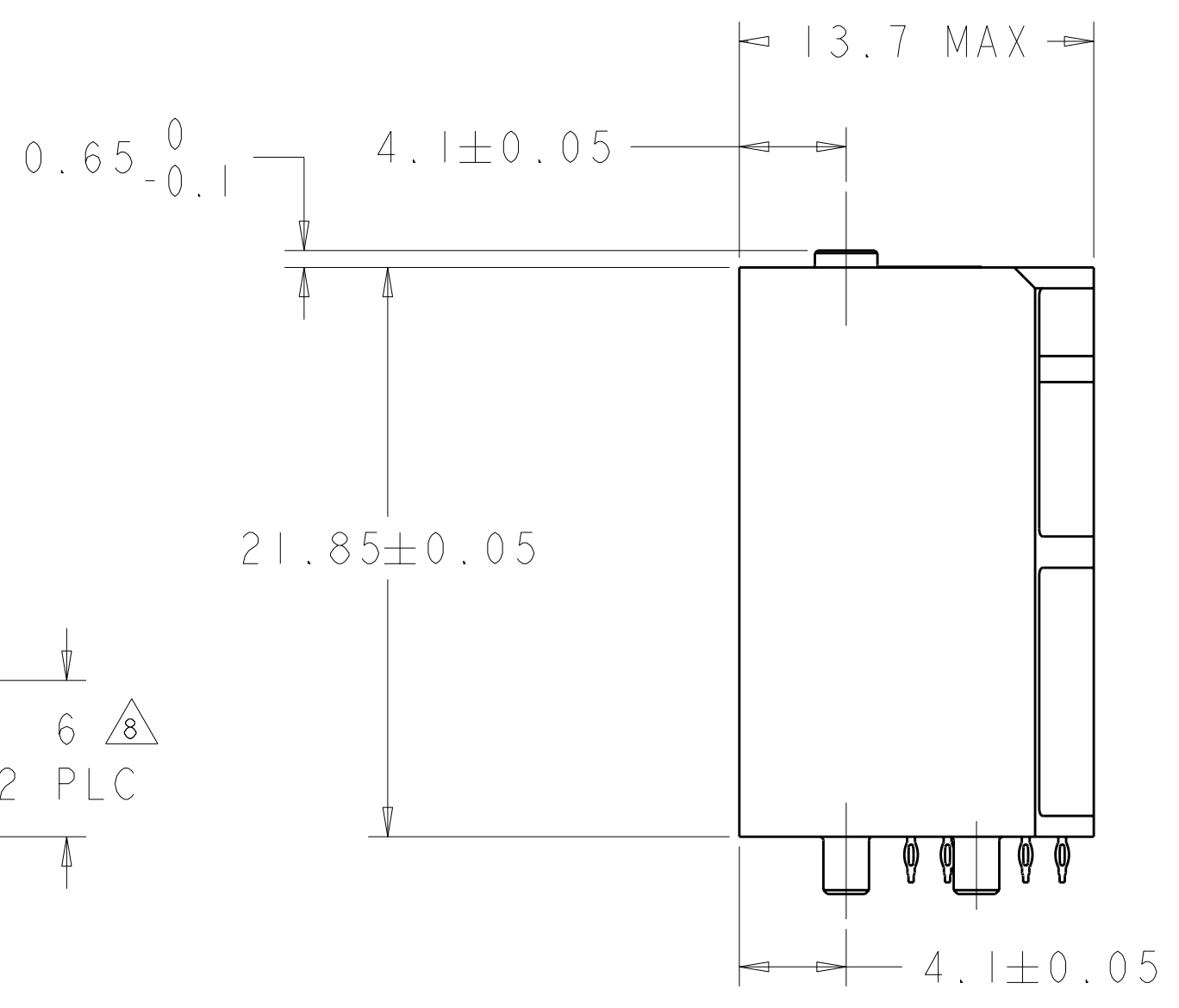
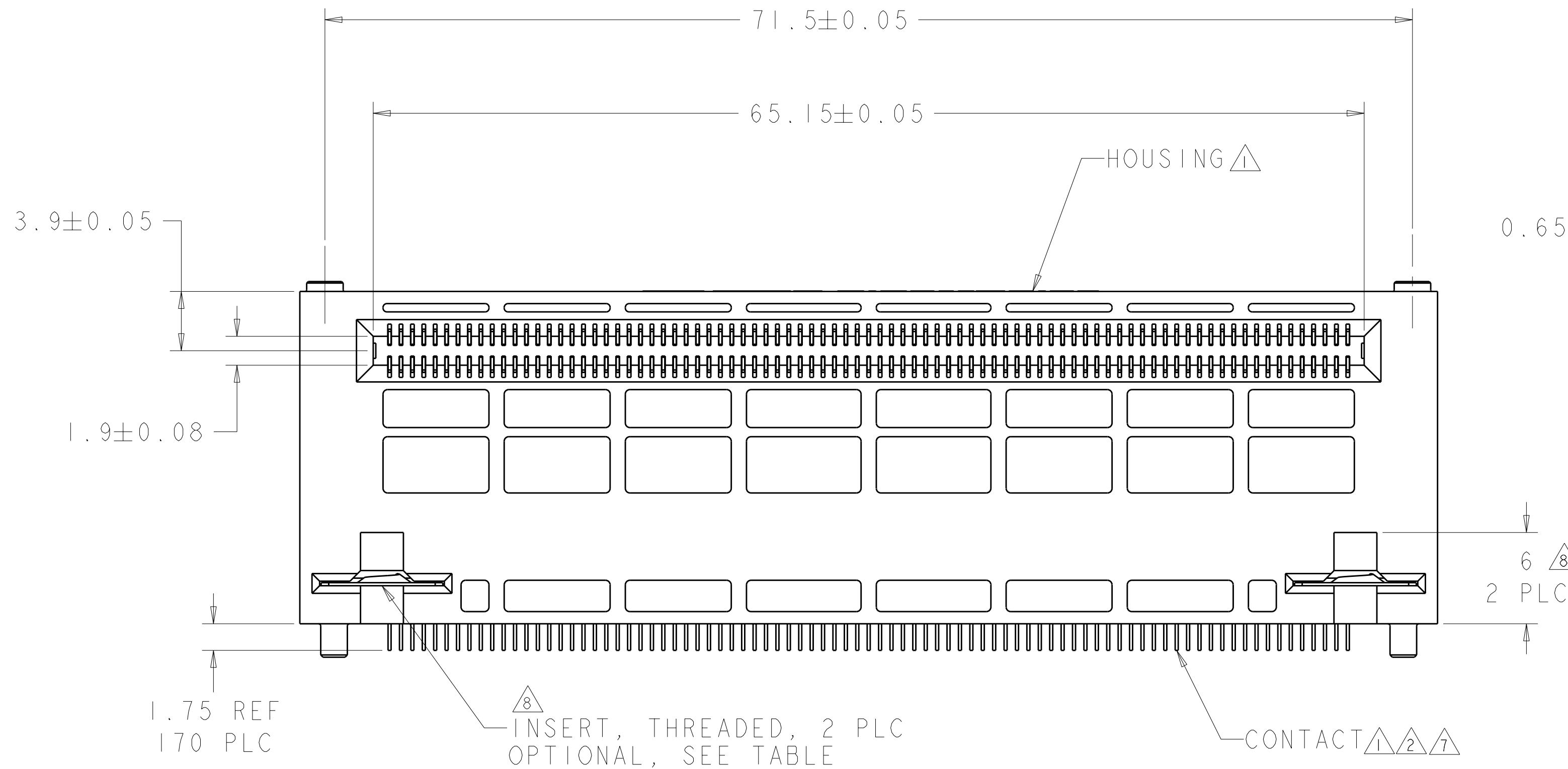
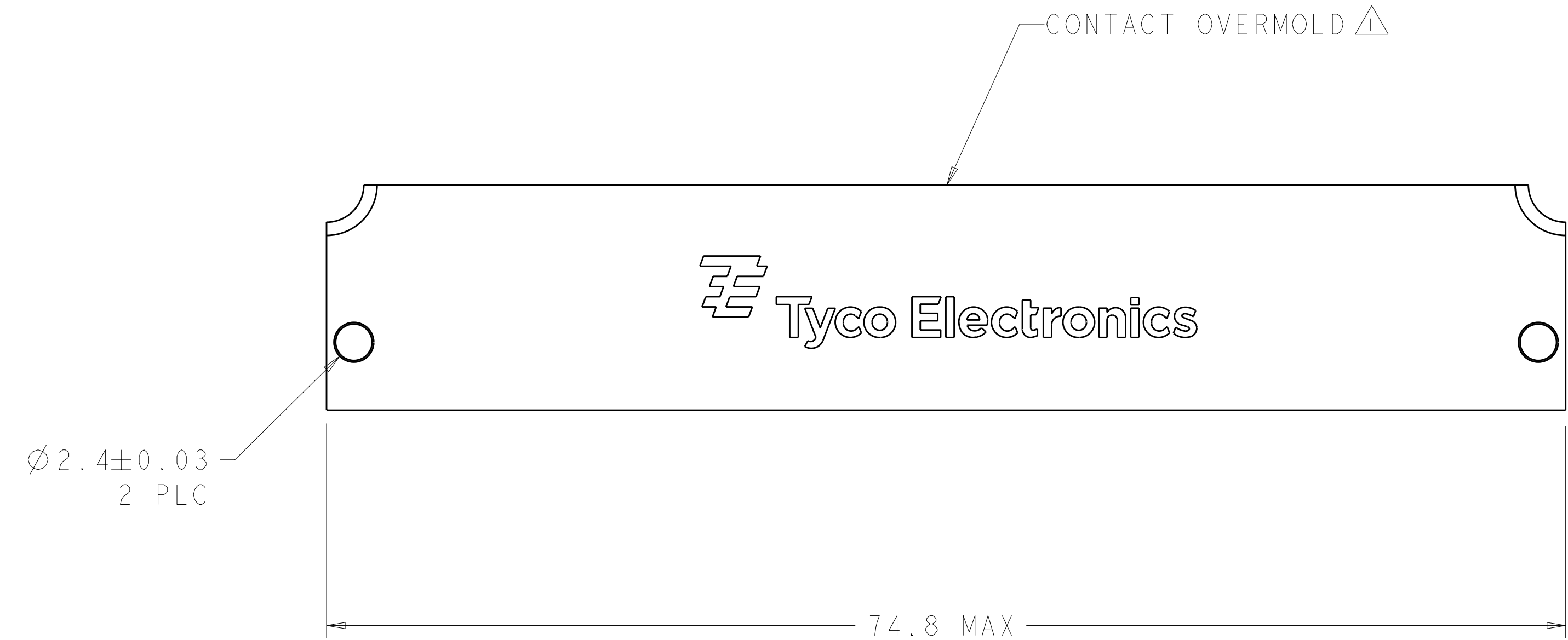


**THE DATASHEET OF**  
**1-1367703-2**



LOC	DIST	REV	DATE	BY	CHK	APPD
AG	00	18	16MAY2011	RK	HMR	

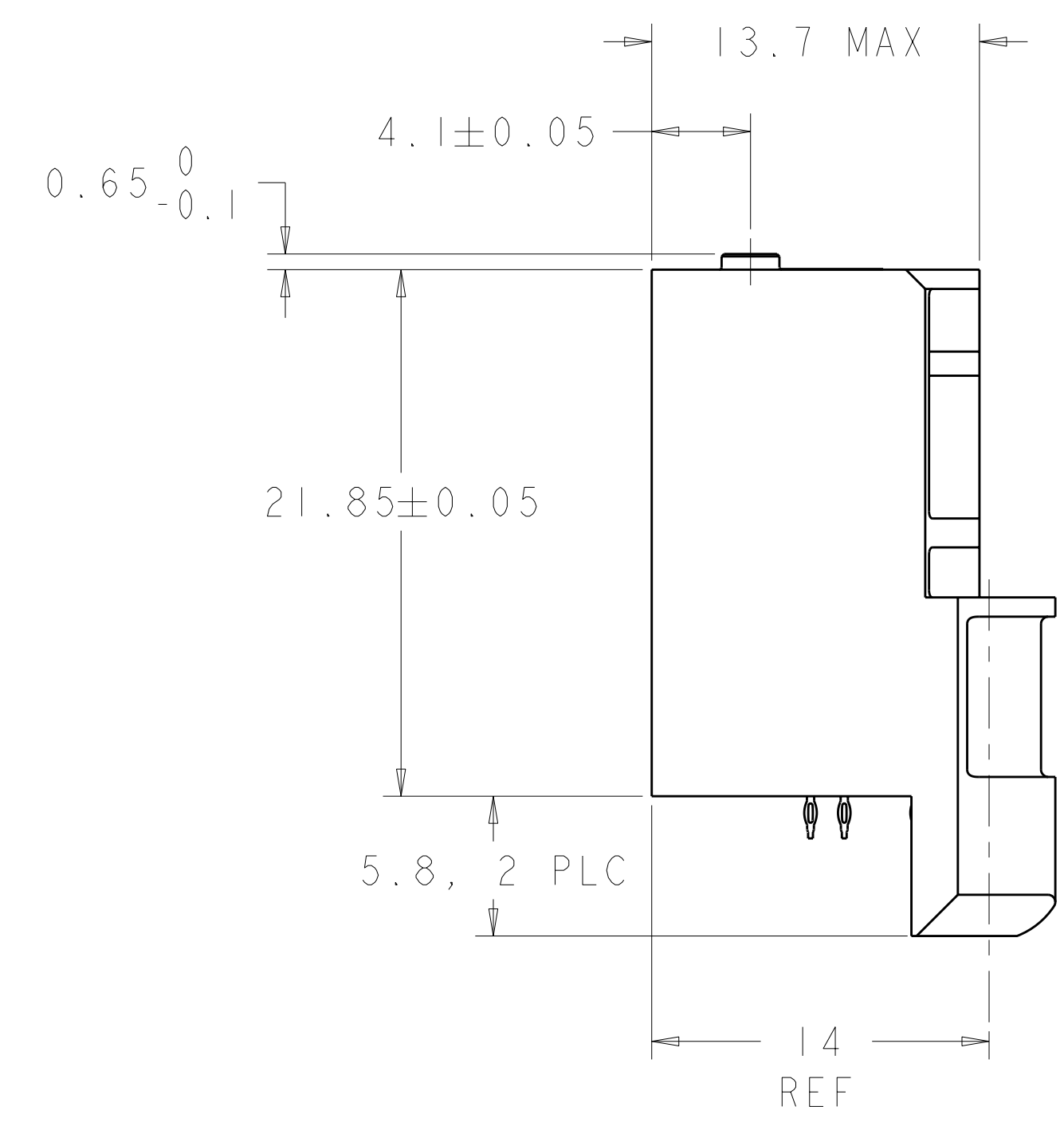
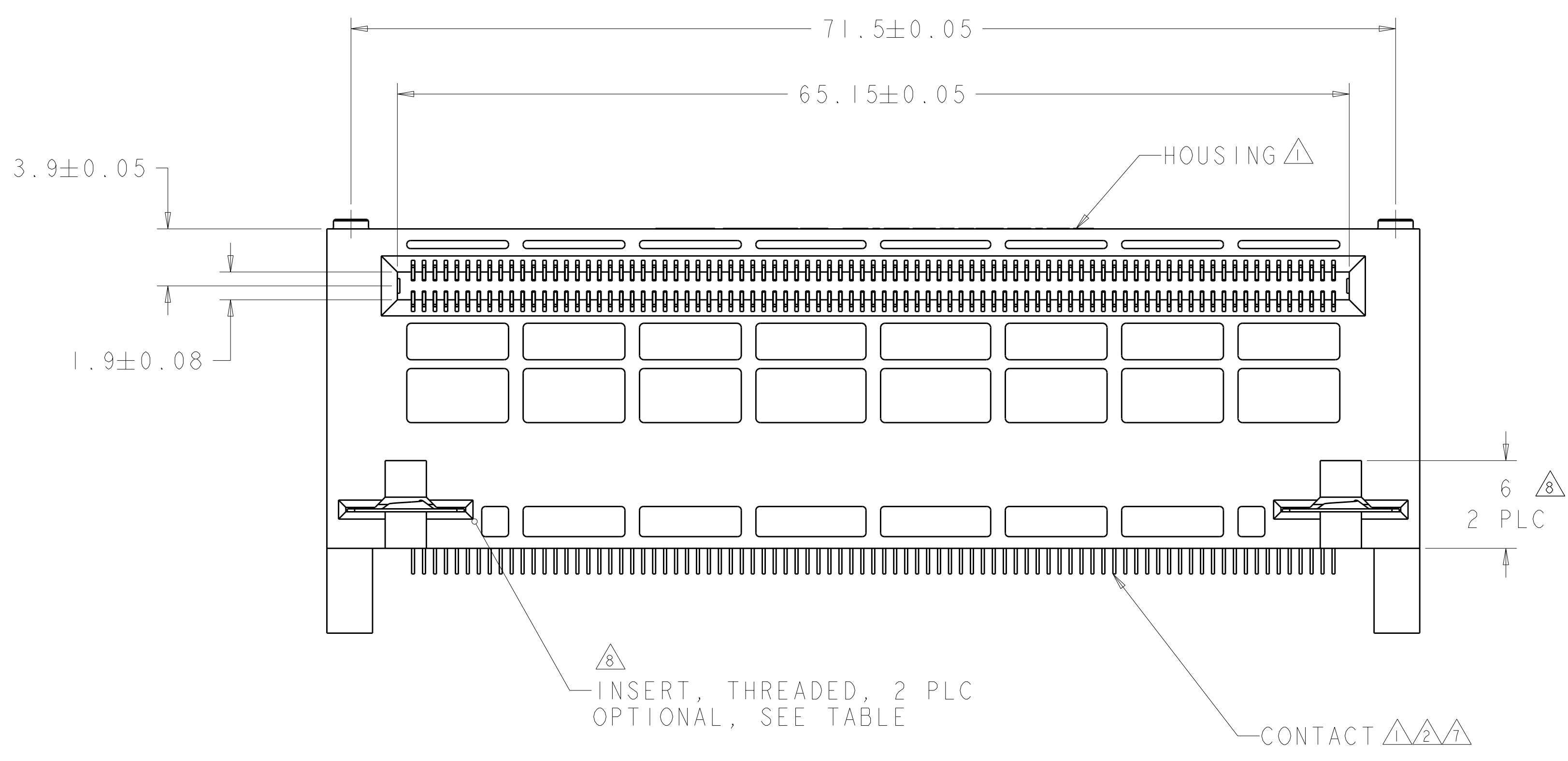
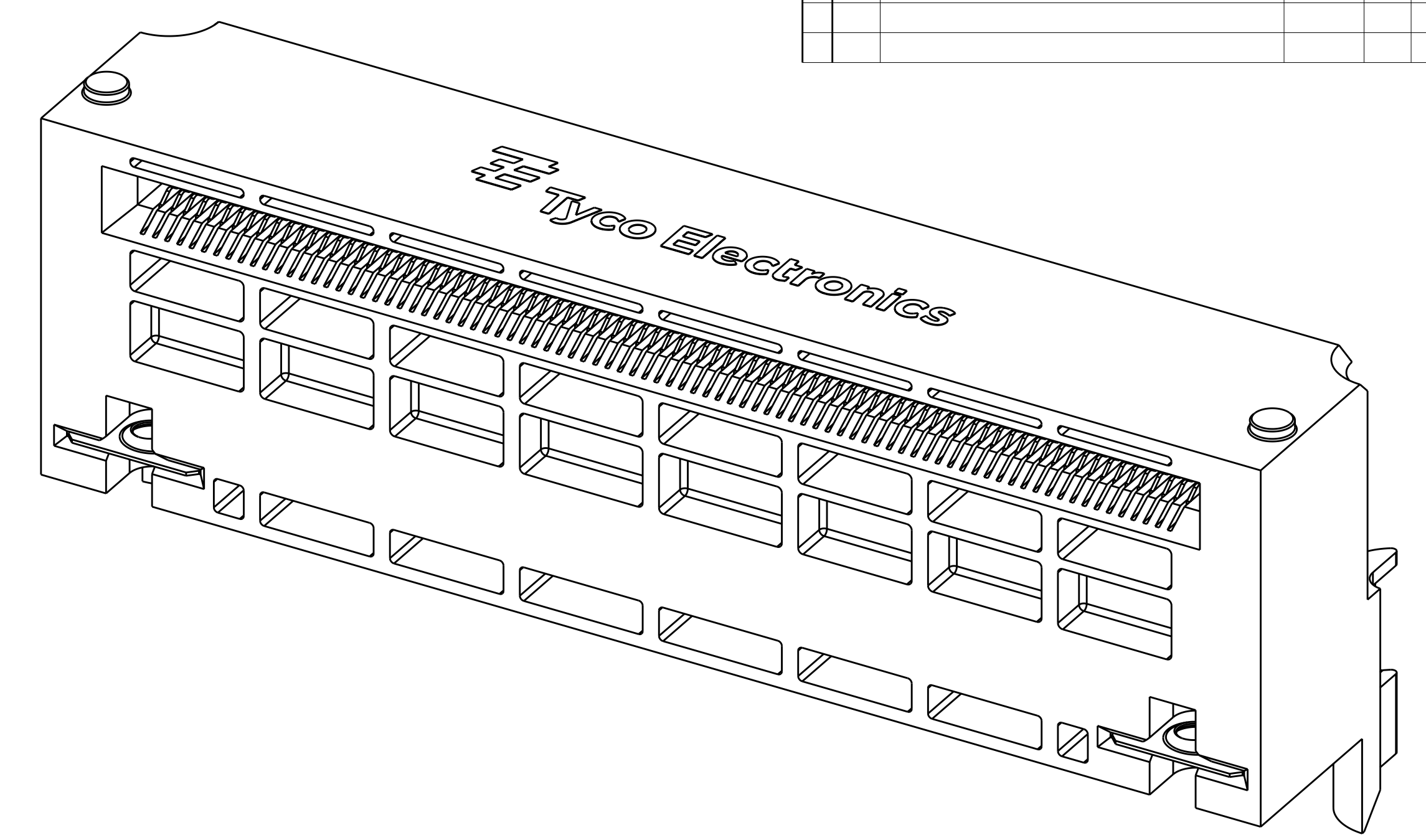
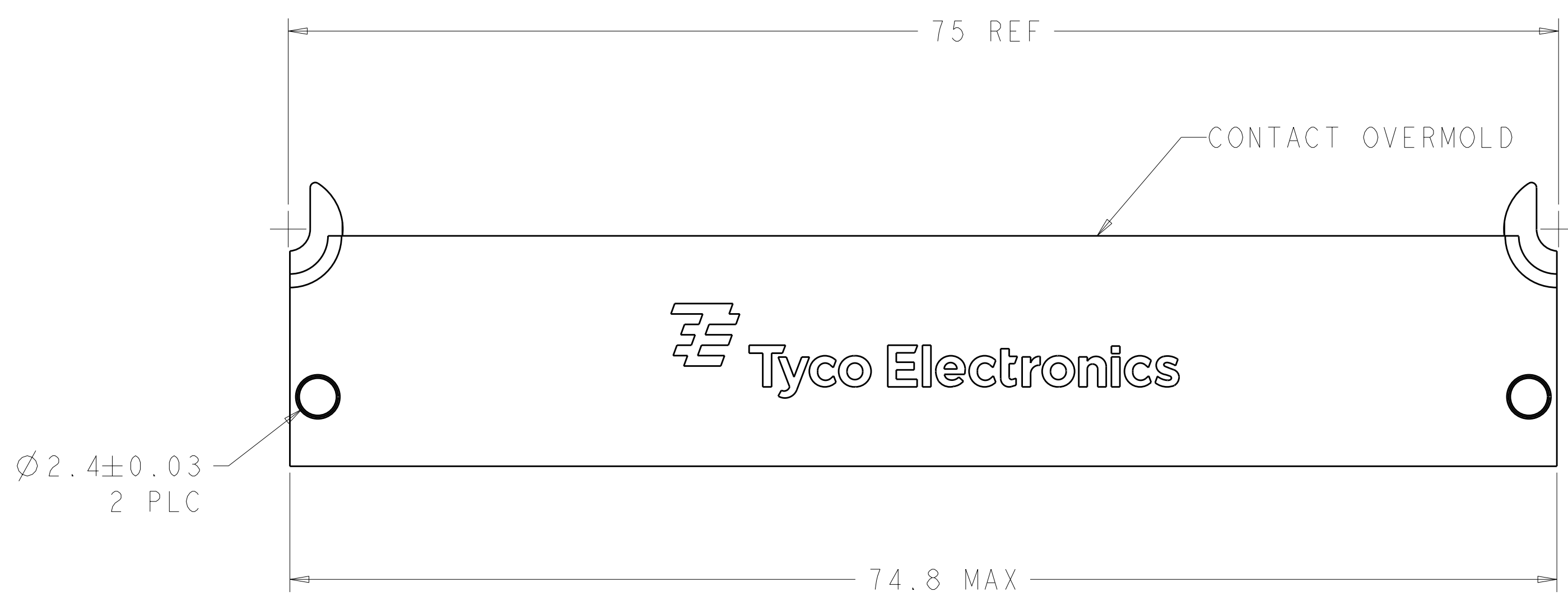
- △ HOUSING: LCP, UL94V-0 RATED  
CONTACT OVERMOLD: POLYESTER, PBT,  
30% GLASS FIBER REINFORCED  
CONTACT: COPPER ALLOY
- △ CONTACT FINISH: 1.27 MICROMETER MIN TIN-LEAD OVER  
1.27 MICROMETER MIN NICKEL ON TAIL  
SURFACE TREATMENT OVER 0.76 MICROMETER MIN GOLD OR 0.64 MICROMETER  
MIN PALLADIUM-NICKEL OVER 1.27 MICROMETER MIN NICKEL ON MATING AREA
- △ MANUFACTURING TOLERANCE FOR Ø0.40 REF FINISHED HOLE WITH Sn Pb PLATING:  
DRILLED HOLE = Ø0.50±0.02  
COPPER PLATING = 0.025-0.050  
Sn Pb PLATING = 0.0038-0.0124  
OR  
Ø0.425 REF FINISHED HOLE WITHOUT Sn Pb PLATING  
DRILLED HOLE = Ø0.50±0.02  
COPPER PLATING = 0.025-0.050 WITH EITHER  
OSP = 0.0002-0.0005 OR  
IMMERSION Ag = 0.0001 MIN OR  
IMMERSION Au/Ni = 0.0001-0.0005 AU / 0.004-0.0076 Ni
- △ DESIGN WILL ACCEPT MODULES THAT MEET THE REQUIREMENTS  
OF PICMG AMC.0 RI.0 ADVANCED MEZZANINE CARD CONNECTOR
- △ SIGNAL GROUND VIAS, 28 PLACES, PCB ONLY, NOT  
USED IN CONNECTOR
- △ DATUM -F- AND BASIC DIMENSION ESTABLISHED BY  
CUSTOMER'S FIDUCIALS
- △ CONTACT FINISH: 1.27 MICROMETER MIN TIN OVER  
1.27 MICROMETER MIN NICKEL ON TAIL  
SURFACE TREATMENT OVER 0.76 MICROMETER MIN GOLD OR 0.64 MICROMETER  
MIN PALLADIUM-NICKEL OVER 1.27 MICROMETER MIN NICKEL ON MATING AREA
- △ MOUNTING SCREW REQUIREMENTS: CUSTOMER SUPPLIED M2.5 X 0.45 8mm LONG  
LENGTH DETERMINED BY: PCB THICKNESS 2.4±0.2, WASHER THICKNESS 0.9±0.3  
CHANGES IN PCB AND/OR WASHER THICKNESS MAY EFFECT SCREW LENGTH.  
MAXIMUM ALLOWABLE TORQUE, 2.0 Kg/cm



SIZE	CAGE CODE	DRAWING NO	RESTRICTED TO
7.0	2	YES	△
7.0	2	YES	△
7.0	2	NO	△
7.0	2	NO	△
3.0	1	YES	△
3.0	1	YES	△
3.0	1	NO	△
3.0	1	NO	△
"A"	SHEET	INSERTS	FINISH
			PART NUMBER

THIS DRAWING IS A CONTROLLED DOCUMENT.		DWN P. KERLIN 18FEB2005	TE Connectivity	
DIMENSIONS: mm		CHK E. BRIGHT 18FEB2005	NAME AMC CONNECTOR, STYLE B+	
TOLERANCES UNLESS OTHERWISE SPECIFIED: 9 PLC ± 3 PLC ± 5 PLC ± 4 PLC ± ANGLES ± FINISH ±		APVD E. BRIGHT 18FEB2005	PRODUCT SPEC 108-2277	
MATERIAL		APPLICATION SPEC 114-13181	SIZE A100779	
PRELIMINARY		WEIGHT	CAGE CODE 1367703	
		CUSTOMER DRAWING	SCALE 5:1 SHEET 1 OF 3 REV 18	

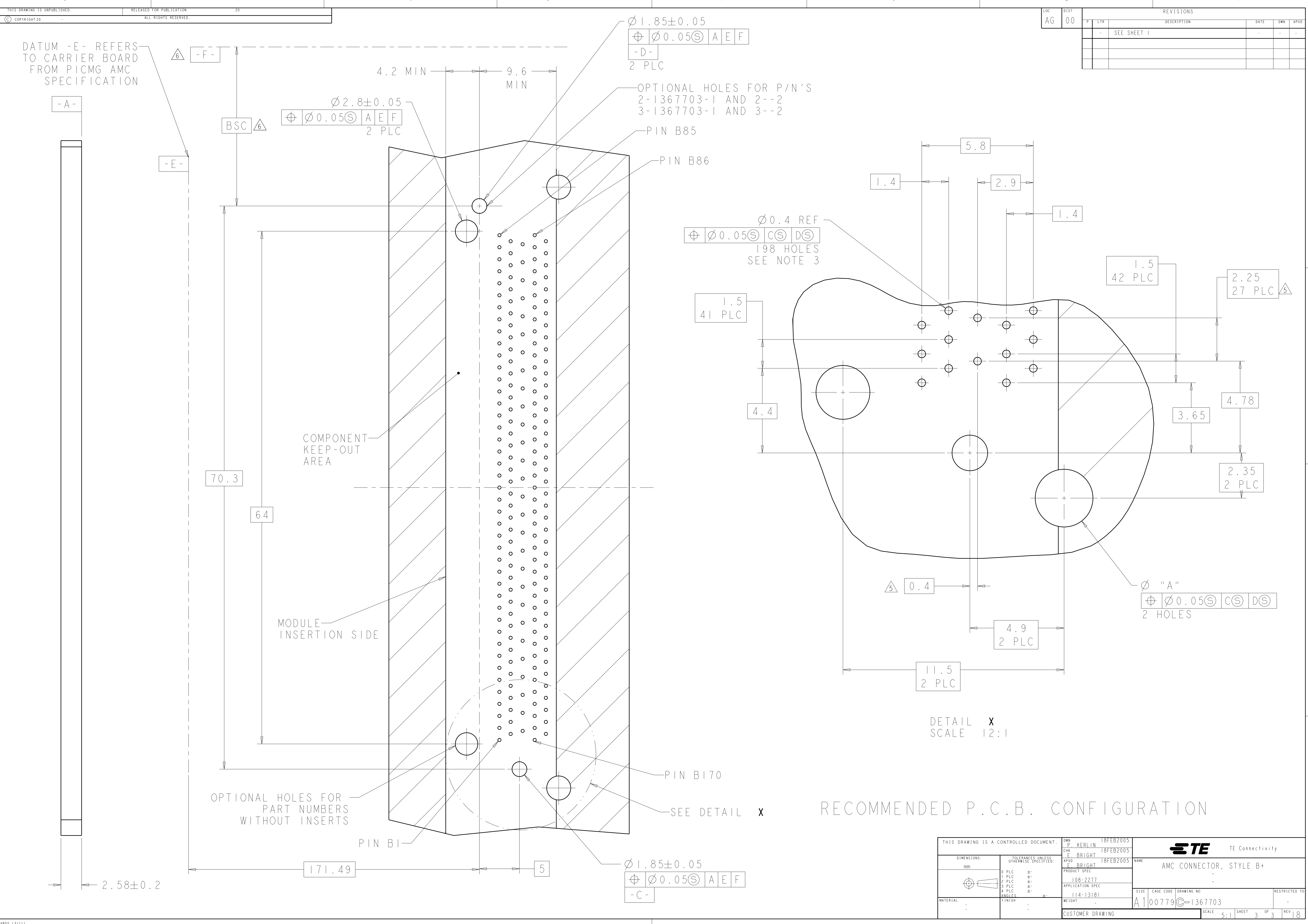
LOC	DIST	REVISIONS			
P	LTB	DESCRIPTION	DATE	DWN	APVD
AG	00	SEE SHEET 1	-	-	-



THIS DRAWING IS A CONTROLLED DOCUMENT.		DWN P. KERLIN 18FEB2005	TE Connectivity	
DIMENSIONS: mm		CHK E. BRIGHT 18FEB2005	NAME AMC CONNECTOR, STYLE B+	
TOLERANCES UNLESS OTHERWISE SPECIFIED: 9 PLC ± 3 PLC ± 5 PLC ± 4 PLC ± ANGLES ±		APVD E. BRIGHT 18FEB2005		
MATERIAL		PRODUCT SPEC 108-2277	SIZE 114-13181	RESTRICTED TO
FINISH		APPLICATION SPEC	WEIGHT	
		CUSTOMER DRAWING	SCALE 5:1	SHEET 2 OF 3
			REV 18	

LOC	DIST	REV	DATE	BY	APPD
AG	00				

DATUM -E- REFERS TO CARRIER BOARD FROM PICMG AMC SPECIFICATION



$\varnothing 1.85 \pm 0.05$   
 $\oplus \varnothing 0.05 \text{ (S) A E F}$   
 -D-  
 2 PLC

$\varnothing 2.8 \pm 0.05$   
 $\oplus \varnothing 0.05 \text{ (S) A E F}$   
 2 PLC

$\varnothing 0.4 \text{ REF}$   
 $\oplus \varnothing 0.05 \text{ (S) C (S) D (S)}$   
 198 HOLES  
 SEE NOTE 3

$\varnothing$  "A"  
 $\oplus \varnothing 0.05 \text{ (S) C (S) D (S)}$   
 2 HOLES

$\varnothing 1.85 \pm 0.05$   
 $\oplus \varnothing 0.05 \text{ (S) A E F}$   
 -C-


DETAIL X  
 SCALE 12:1

RECOMMENDED P.C.B. CONFIGURATION

THIS DRAWING IS A CONTROLLED DOCUMENT.		DWN P. KERLIN 18FEB2005	TE Connectivity NAME AMC CONNECTOR, STYLE B+
DIMENSIONS:		CHK E. BRIGHT 18FEB2005	
TOLERANCES UNLESS OTHERWISE SPECIFIED:		APVD E. BRIGHT 18FEB2005	
0 PLC ± 1 PLC ± 2 PLC ± 3 PLC ± 4 PLC ± ANGLES ±		PRODUCT SPEC 108-2277 APPLICATION SPEC 114-13181 WEIGHT - CUSTOMER DRAWING	
MATERIAL	FINISH	SIZE CAGE CODE DRAWING NO. A100779C=1367703	RESTRICTED TO
		SCALE 5:1	SHEET 3 OF 3
			REV 18

## Looking for pricing, stock, or lifecycle information?

Click below to explore more details on WIN SOURCE:

 [View 1-1367703-2 on WIN SOURCE](#)

 [TE Connectivity](#) Information

## Optimize Your Supply Chain with WIN SOURCE Solutions

-  Global Sourcing Solution
-  Obsolete Management
-  Cost Control Management
-  Shortage Management
-  Alternative Solution
-  Excess Inventory Management