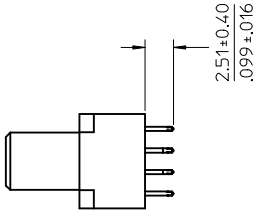
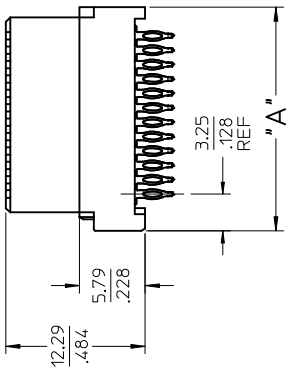
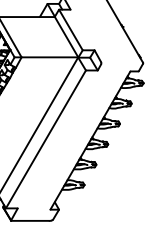
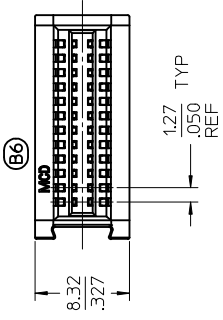




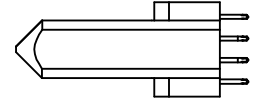
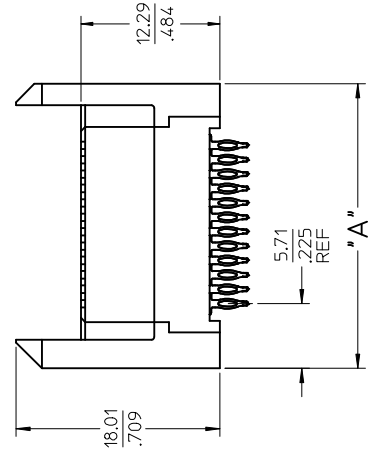
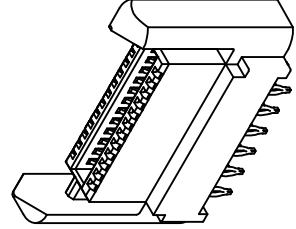
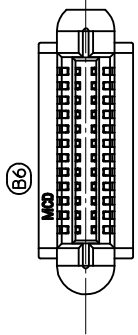
THE DATASHEET OF
461130401



P/N 46113-0241 SHOWN



P/N 46113-0243 SHOWN



NOTES:

1. MATERIAL: HOUSING: LCP, 94-VO, COLOR: BLACK
POWER CONTACTS: COPPER ALLOY
SIGNAL CONTACTS: MODIFIED TIN BRASS
2. FINISH: SELECT GOLD - 0.75 μ M/30 μ INCHES
SELECT TIN - 1.91 μ M/75 μ INCHES OR
SELECT TIN-LEAD - 1.91 μ M/75 μ INCHES
BOTH OVER NICKEL - 1.25 μ M/50 μ INCHES
3. PARTS ARE RoHS COMPLIANT
4. MATES TO MOLEX P/N 45985-SERIES OR
EDGE CARD 1577.062
5. PRODUCT SPECIFICATION PS-46114-001
6. PACKAGING: PER PK-46114-003
7. REFER TO PS-46114-001 FOR OSP THRU-HOLE SPECIFICATIONS.

(B7) 7. REFER TO PS-46114-001 FOR OSP THRU-HOLE SPECIFICATIONS.

SIG

NO. OF CKT'S	12
	16
	20
	24
	28
	32
	36
	40

SIG

NO. OF CKT'S	12
	16
	20
	24
	28
	32
	36
	40

UPDATE NOTES	EC NO: S2016-1041 DRW:AL IN06 2016/12/13
REV	B7
DESCRIPTION	APP:KHLIM 2016/12/15 CHKD:JZENG 2016/12/15

QUALITY SYMBOLS	= 0 = 0 = 0
-----------------	-------------------

GENERAL TOLERANCES (UNLESS SPECIFIED)	mm 4 PLACES ± --- 3 PLACES ± --- 2 PLACES ± 0.25 1 PLACE ± --- 0 PLACE ± ---
INCH	± --- ± 0.10 ± --- ± ---

DIMENSION STYLE	MM/MIN
DRAWN BY	MKARADIMAS
DATE	2008/03/10
CHECKED BY	MBANDURA
DATE	2008/03/14
APPROVED BY	JCOMERC I
DATE	2009/12/03
MATERIAL NO.	

SEE CHART
SIZE THIS DRAWING CONTAINING INCORPORATED AND SH

Looking for pricing, stock, or lifecycle information?

Click below to explore more details on WIN SOURCE:

 [View 461130401 on WIN SOURCE](#)

 [Molex, LLC Information](#)

Optimize Your Supply Chain with WIN SOURCE Solutions

-  Global Sourcing Solution
-  Obsolete Management
-  Cost Control Management
-  Shortage Management
-  Alternative Solution
-  Excess Inventory Management