



**THE DATASHEET OF
10069524-122402LF**



10069524-

AA B C D E V FF

FOR PLUG, SEE DWG. NO. 10069525

AA	POSITION
04	2X20
06	2X30
08	2X40
10	2X50
12	2X60
14	2X70
16	2X80
18	2X90
20	2X100

B	COMBINATION OF MATED HEIGHT	Plug 1	Plug 2	Plug 3	Plug 4
Recep 1					
Recep 2					
Recep 3					

NOTES:

- MATERIAL HOUSING: LCP UL 94V-0
TERMINAL: NICKEL COPPER
- PLATING AS SHOWN IN TABLE.
- SEE GS-12-547 FOR PRODUCT SPEC.
- SEE GS-14-551 AND GS-14-816 FOR THE DETAILS OF PACKAGING.
PRODUCT WILL BE PACKED IN ACCORDANCE TO GLOBAL PROCEDURE GS-14-920.
- PACKAGING OPTION 2: *NOT ALL SIZES AVAILABLE; CHECK WITH FACTORY*.
- THIS PRODUCT MEETS THE EUROPEAN UNION DIRECTIVES AND OTHER COUNTRY REGULATIONS AS DESCRIBED IN GS-22-008.
- THE HOUSING WITH WITHSTAND EXPOSURE UP TO 260° PEAK TEMPERATURE FOR 30 SECONDS IN A CONVECTION, INFRA-RED OR VAPOR REFLOW OVEN.
- PLATING OPTION *4* IS LEADFREE ALTERNATIVE FOR OPTION *0*,
AND OPTION *6* IS LEADFREE ALTERNATIVE FOR OPTION *1*.
- THIS PARTNUMBER ONLY CATER FOR SPECIAL CUSTOMER REQUIREMENT OF COPLANARITY OF 0.1 FOR ALL POSITION.

D	P
0	YES
2	NO

C	GOLD 0. NICKEL
0	GOLD 0. NICKEL
1	GOLD F 0.76um NICKEL
4	GOLD 0. NICKEL
5	GOLD 0. NICKEL
6	GOLD F 0.76um NICKEL
9	GOLD 0. NICKEL

ltr	ecn no	dr	date	surface ISO 1302
A	S06-0286	MCH	08/25/06	tolerances un
B	S06-0316	MCH	09/25/06	angles
C	S09-0326	MCH	10/21/09	linear
D	ELX-N-20407	Jim	03/26/15	dr M. Chen
E	ELX-N-20887	Bob	12/22/17	engr Bob C
F	ELX-N-31685	Bob	11/22/18	chr LQ Lc
	sheet	revision	E	appd Tim Y.
	index	sheet	1~6	1~6

form: A3--2016-02--24

1 | 2 | 3

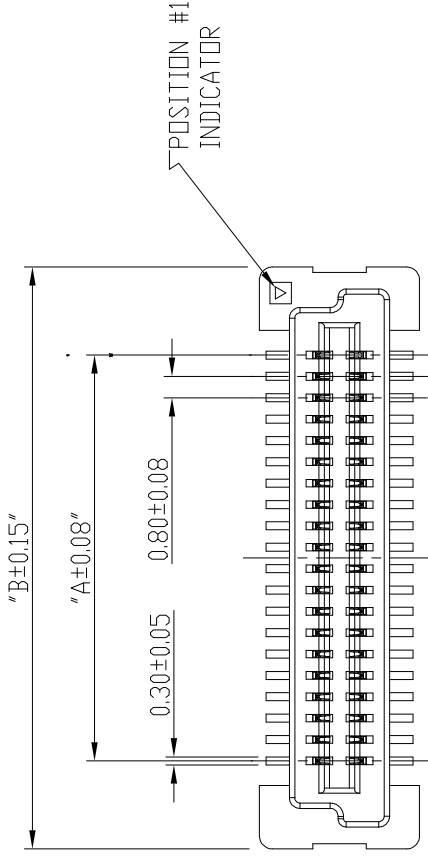
4

PDS: Rev

1 | 2 | 3 | 4 |

PRODUCT NO.	NUMBER OF POSITIONS	DIMENSION		
		A	B	C
10069524-041***	2X20	15.2	21.8	20.2
10069524-061***	2X30	23.2	29.8	28.2
10069524-081***	2X40	31.2	37.8	36.2
10069524-101***	2X50	39.2	45.8	44.2
10069524-121***	2X60	47.2	53.8	52.2
10069524-141***	2X70	55.2	61.8	60.2
10069524-161***	2X80	63.2	69.8	68.2
10069524-181***	2X90	71.2	77.8	76.2
10069524-201***	2X100	79.2	85.8	84.2

A

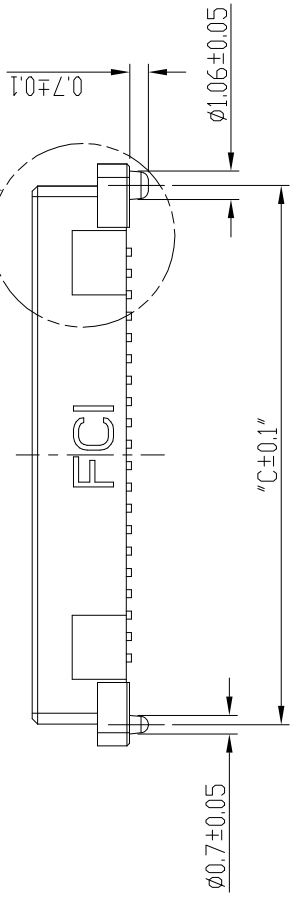


B



SEE DETAIL A

C



D

form: A3-2016-02-24

3

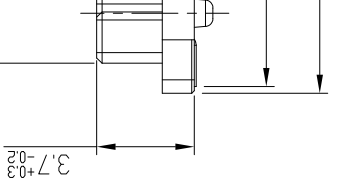
2

1

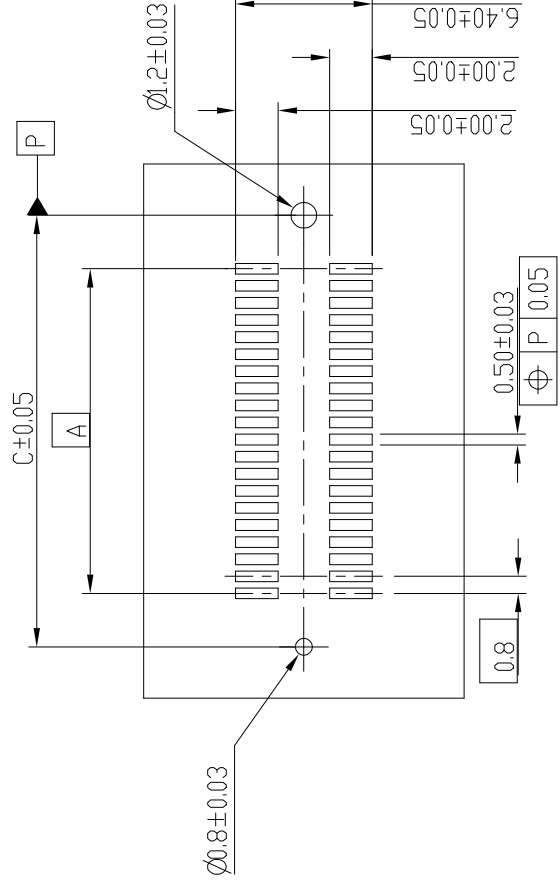
4

PDS: Rev

mat'l. code		surface	ISO 1302
ltr	ecn no	dr	date
F			
		tolerances un	
		angles	linear
		X±2°	
		dr	M. Char
		engr	Bob C
		chr	LQ Lc
		appd	Tim Y.
sheet	revision	F	
index	sheet	1~6	

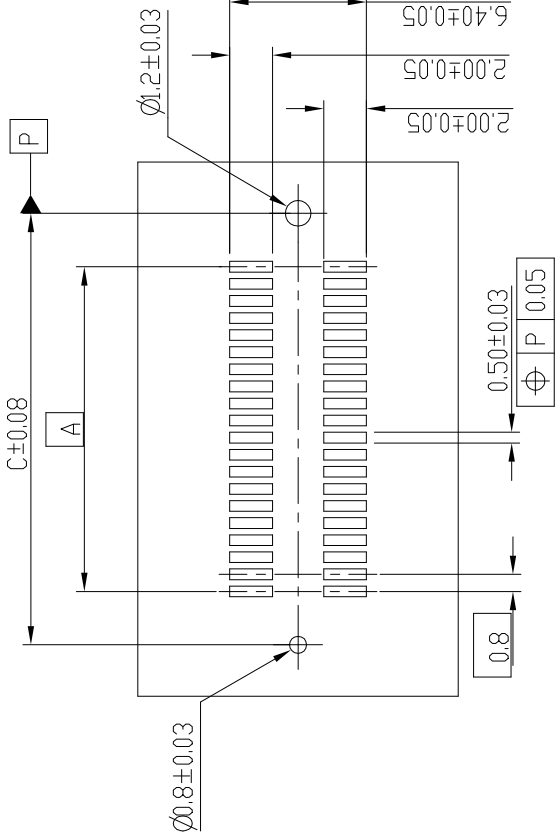


RECEPTACLE 1



RECOMMENDED PCB LAYOUT WITH PEGS
FOR NO. OF POSITION 2X20, 2X30, 2X40, 2X50, 2X60

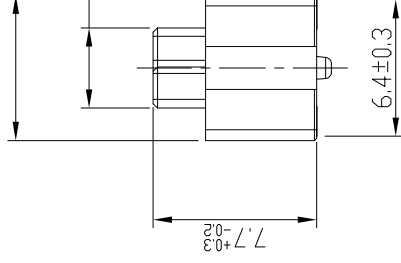
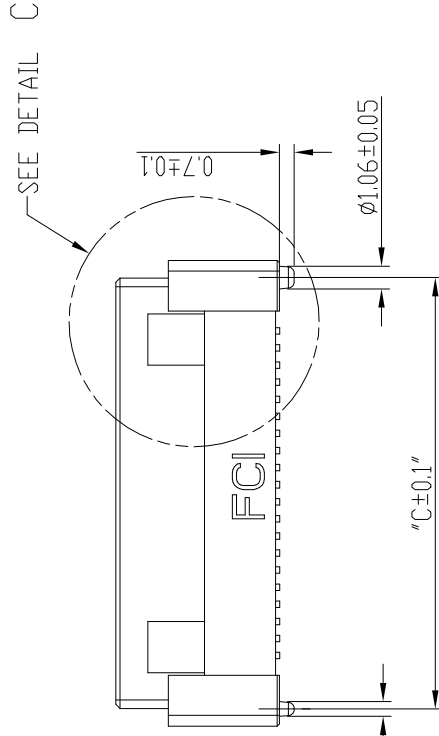
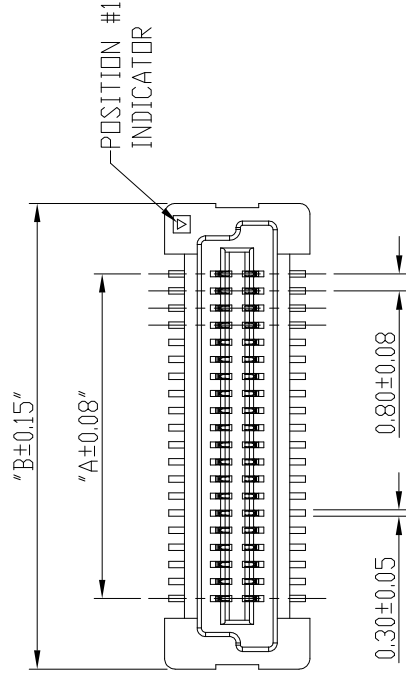
RECOMMENDED PCB LAYOUT WITH PEGS



RECOMMENDED PCB LAYOUT WITH PEGS
FOR NO. OF POSITION 2X70, 2X80, 2X90, 2X100

mat'l. code		surface
ltr	ecn no dr	ISO 1302 ✓
F	date	tolerances un
		angles linear
		X±2°
		dr
		M. Char
		engr
		Bob C
		chr
		LQ Le
		appd
		Tim Y
sheet	revision F	
index	sheet 1~6	

PRODUCT NO.	NUMBER OF POSITIONS	DIMENSION		
		A	B	C
10069524-042***	2X20	15.2	21.8	20.2
10069524-062***	2X30	23.2	29.8	28.2
10069524-082***	2X40	31.2	37.8	36.2
10069524-102***	2X50	39.2	45.8	44.2
10069524-122***	2X60	47.2	53.8	52.2
10069524-142***	2X70	55.2	61.8	60.2
10069524-162***	2X80	63.2	69.8	68.2
10069524-182***	2X90	71.2	77.8	76.2
10069524-202***	2X100	79.2	85.8	84.2



mat'l. code		surface	ISO 1302
ltr	ecn no	dr	date
F			
		tolerances un	
		angles	linear
		X±2°	
		dr	M. Che
		engr	Bob C
		chr	LQ Lc
		appd	Tim Y.
sheet	revision	F	
index	sheet	1~6	

form: A3-2016-02-24

1

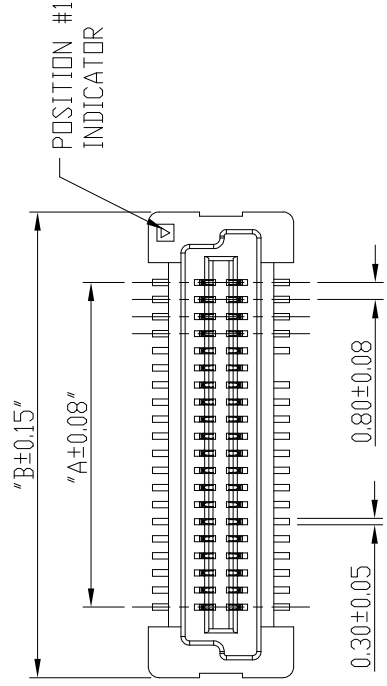
2

3

4 **PDS: Rev**

PRODUCT NO.	NUMBER OF POSITIONS	DIMENSION		
		A	B	C
10069524-043***	2X20	15.2	21.8	20.2
10069524-063***	2X30	23.2	29.8	28.2
10069524-083***	2X40	31.2	37.8	36.2
10069524-103***	2X50	39.2	45.8	44.2
10069524-123***	2X60	47.2	53.8	52.2
10069524-143***	2X70	55.2	61.8	60.2
10069524-163***	2X80	63.2	69.8	68.2
10069524-183***	2X90	71.2	77.8	76.2
10069524-203***	2X100	79.2	85.8	84.2

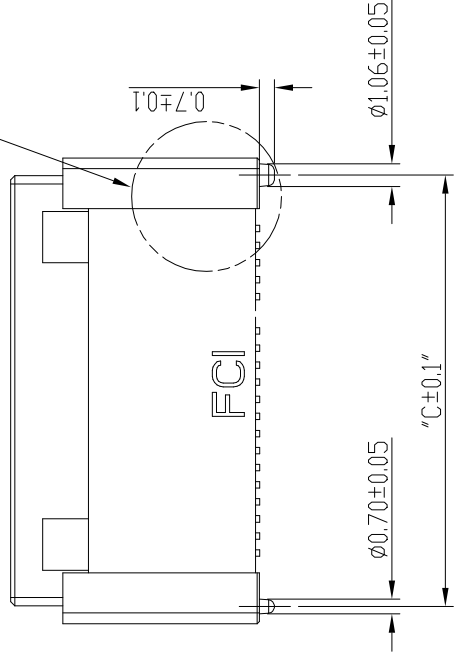
A



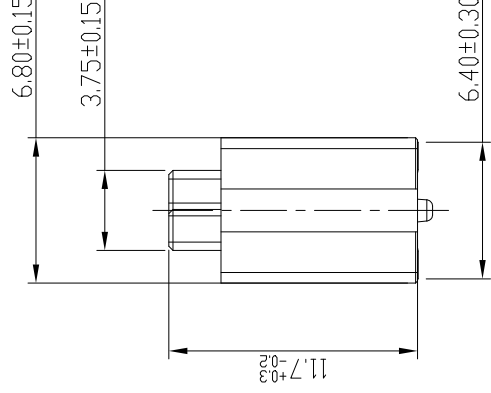
B



SEE DETAIL E



C



mat'l. code		surface	ISO 1302	tolerances un
ltr	ecn no dr	date	angles	linear
F			X±2°	
			dr	M. Che
			engr	Bob C
			chr	LQ Lc
			appd	Tim Y.
sheet	revision	F		
index	sheet	1~6		

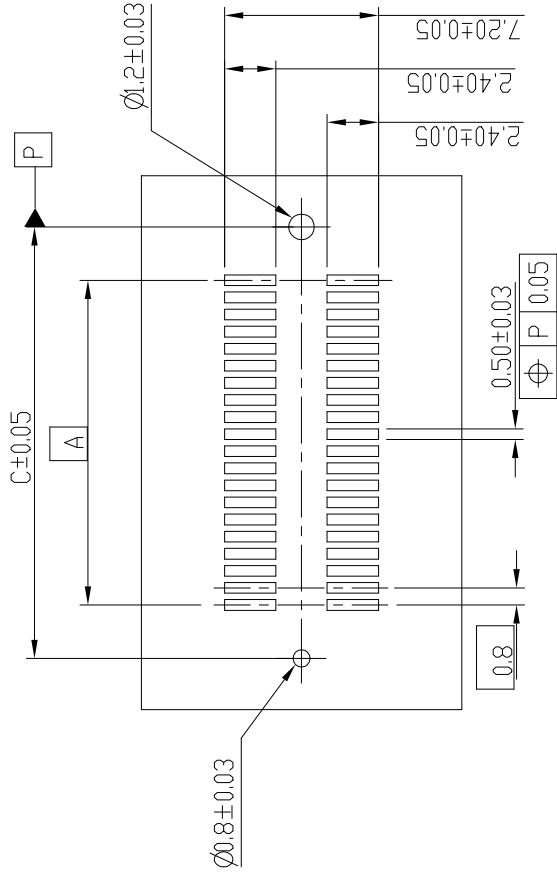
1 |

2 |

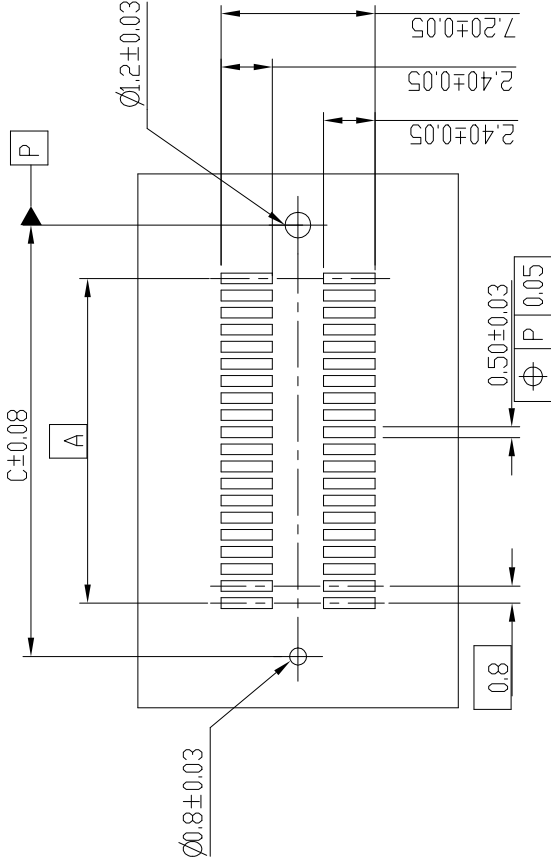
3 |

4 | **PDS: Rev**

RECEPTACLE 2 & 3

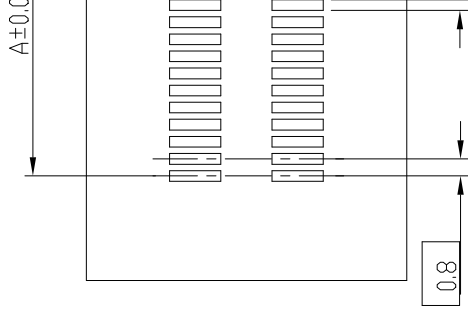


RECOMMENDED PCB LAYOUT WITH PEGS
FOR NO. OF POSITION 2X20, 2X30, 2X40, 2X50, 2X60



RECOMMENDED PCB LAYOUT WITH PEGS
FOR NO. OF POSITION 2X70, 2X80, 2X90, 2X100



RECOMMENDED PCB LAYOUT



mat'l. code		surface	
ltr	ecn no	dr	date
F			
		tolerances un	ISO 1302
		angles	linear
		X±2°	
		dr	M. Che
		engr	Bob C
		chr	LQ Le
		appd	Tim Y
sheet	revision	F	
index	sheet	1~6	

Looking for pricing, stock, or lifecycle information?

Click below to explore more details on WIN SOURCE:

-  [View 10069524-122402LF on WIN SOURCE](#)
-  [Amphenol FCI Information](#)

Optimize Your Supply Chain with WIN SOURCE Solutions

-  Global Sourcing Solution
-  Obsolete Management
-  Cost Control Management
-  Shortage Management
-  Alternative Solution
-  Excess Inventory Management