



**THE DATASHEET OF
10030581-200LF**



3

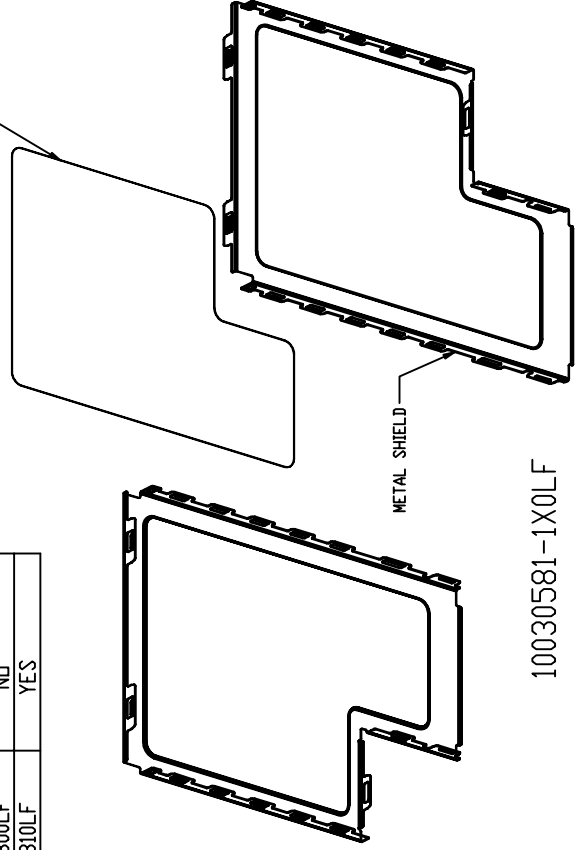
2

1

PRODUCT NO.	INSULATOR
10030581-100LF	NO
10030581-110LF	YES
10030581-200LF	NO
10030581-210LF	YES
10030581-220LF	YES
10030581-300LF	NO
10030581-310LF	YES

A

INSULATOR (OPTION)



METAL SHIELD

B

10030581-1X0LF



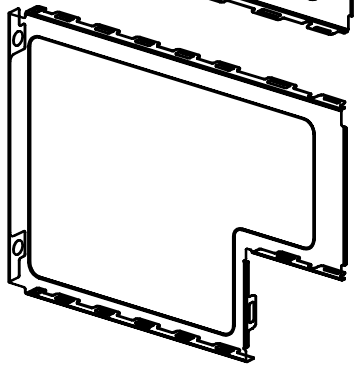
C

NOTES:
 1. MATERIAL PROPERTIES:
 METAL SHIELD : STAINLESS STEEL, SURFACE FINISH : MATTE.
 INSULATOR : POLYESTER FILM WITH ADHESIVE, 3M 1350 DR EQUIVALENT.
 2. PART NUMBER SCHEME:
 10030581- X.X.X.LF

Copyright FCI.

D

10030581-3X0LF



RESERVED
 INSULATOR
 0 : NO
 1 : STANDARD
 SHIELD TYPE NO.
 1 : STANDARD (CLOSE-END)
 2 : EXTENDED (OPEN-END)
 3 : CUSTOMIZED

www.fciconnect.com

Dr	DAVID TENG	2004-10-04
Eng	DAVID TENG	2004-10-04
Chr	PAUL WANG	2004-10-04
Appr	JOSEPH HSIA	2004-10-04

rev	ecr no	dr	date
H	N07-0182	MSH	2007-08-08
D	T05-0228	D T	2005-10-18
E	T06-0015	D T	2006-01-16
F	T06-0057	D T	2006-04-17
G	T06-0144	D T	2006-08-02

TOP SHIELD
 EXPRESSCARD/54
 catalog no

REV F - 888-847

1

2

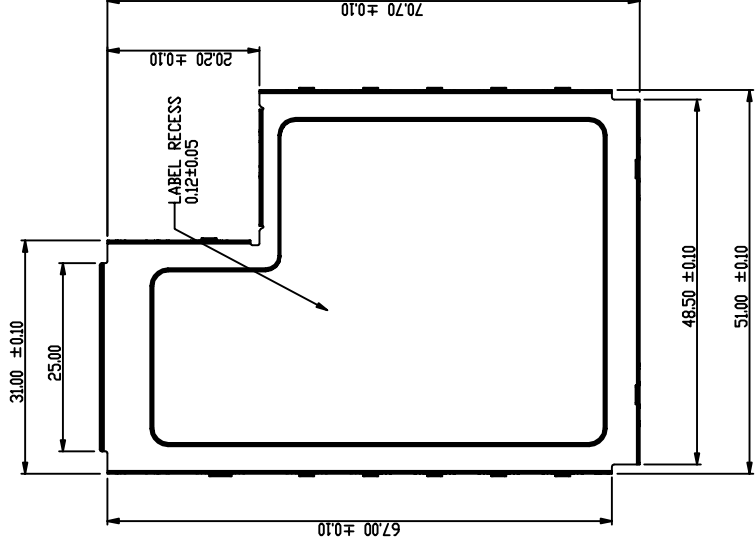
3PDM: Rev:H

PRODUCT NO.
10030581-1X0LF

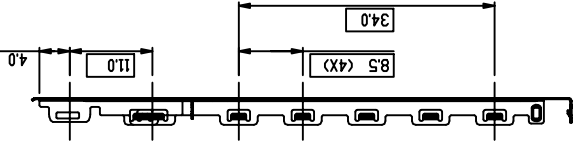
A



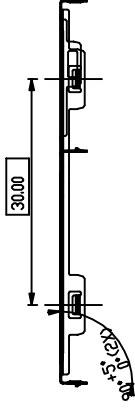
B



C



D

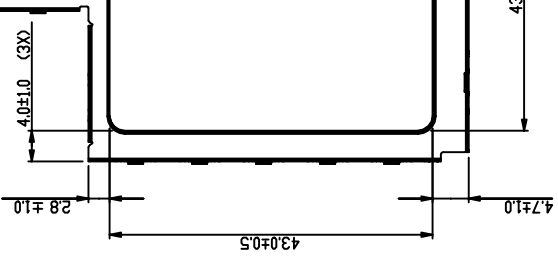
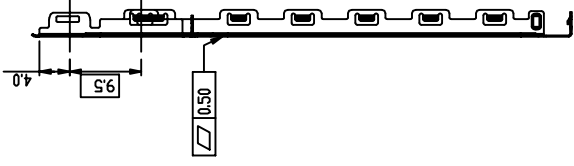


Copyright FCI.

3

2

1



TOP SHIELD
EXPRESSCARD/54
#re catalog no

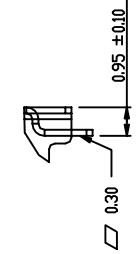
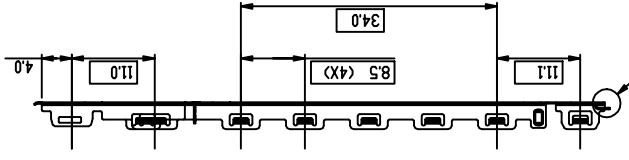
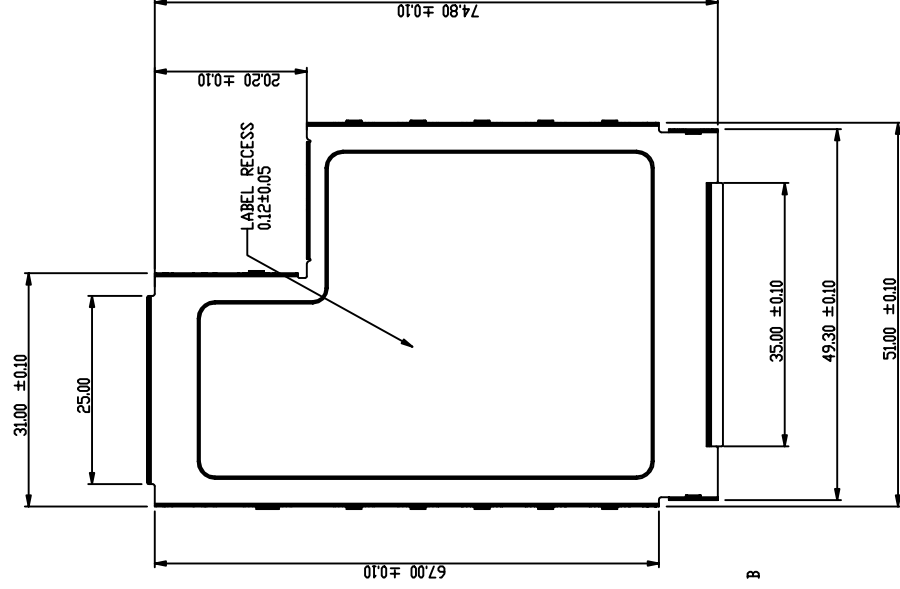
2

1

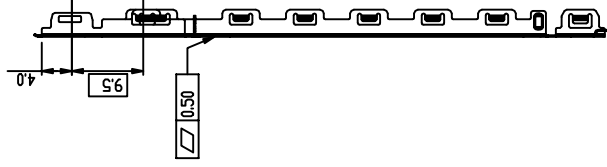
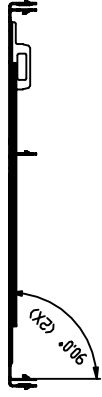
3PDM: Rev:H

REV F - 888-44-17

PRODUCT NO.
10030581-2X0LF



DETAIL B
SCALE 4:000



C

Copyright FCI.

D



TOP SHIELD
EXPRESSCARD/54

catalog no

REV F - 888-447

2

1

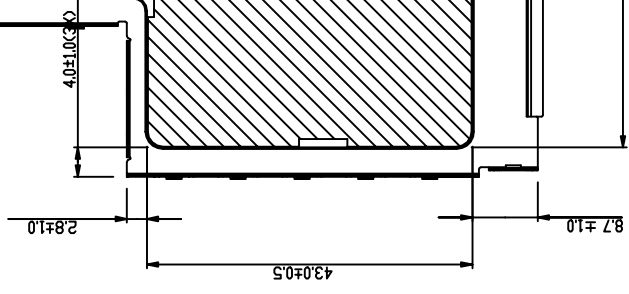
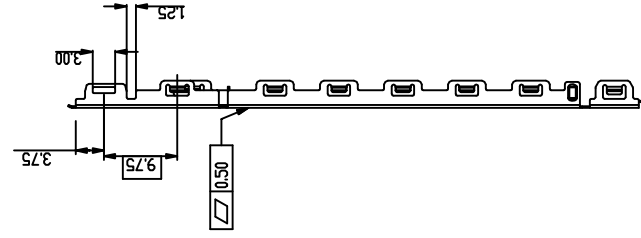
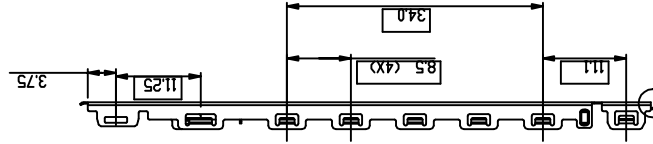
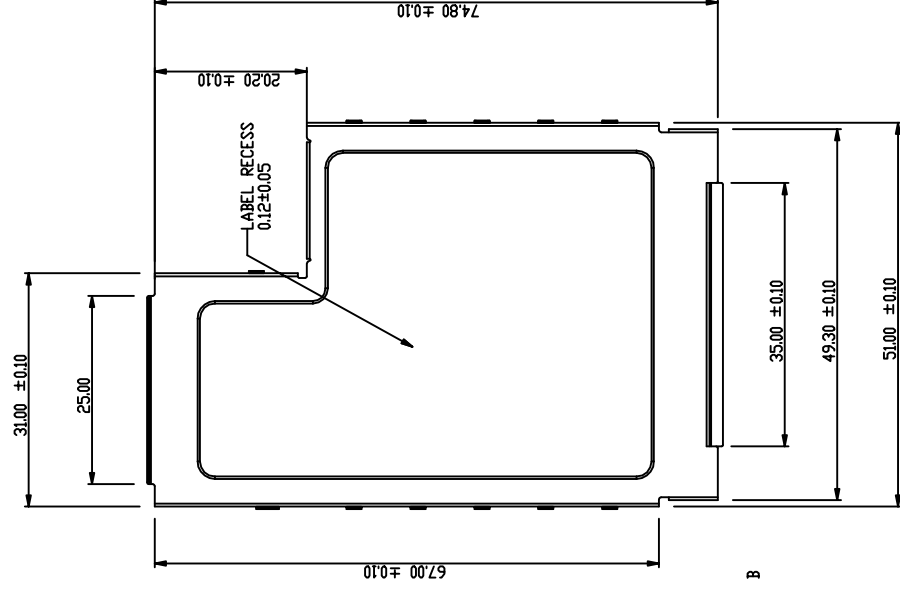
3PDM: Rev:H

3

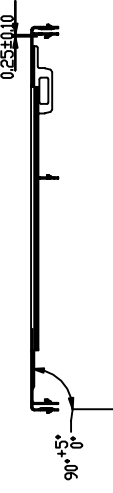
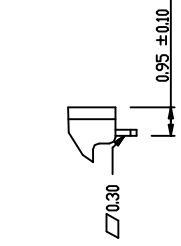
2

1

PRODUCT NO.
10030581-220LF



SEE DETAIL B



DETAIL B
SCALE 4:000



C

Copyright FCI.

D



TOP SHIELD
EXPRESSCARD/54
catalog no

REV: 2004-07

2

1

3PDM: Rev:H

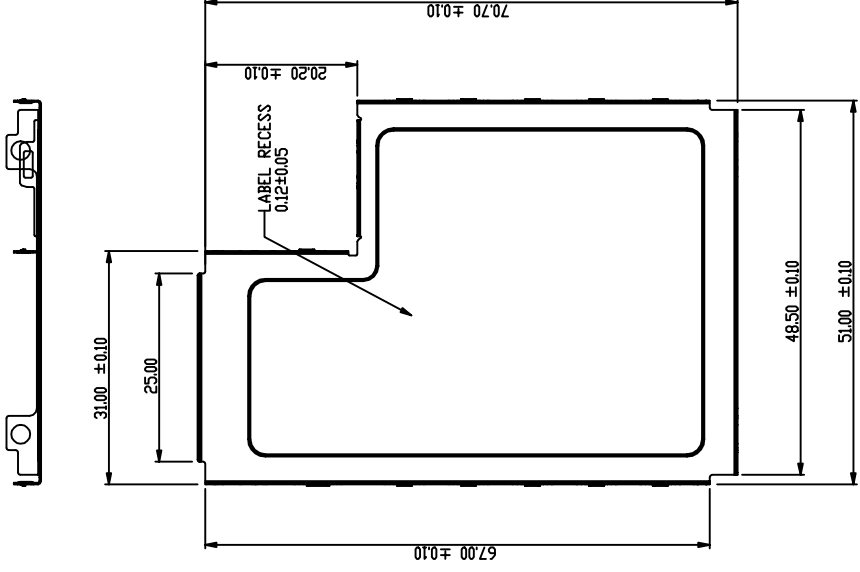
3

2

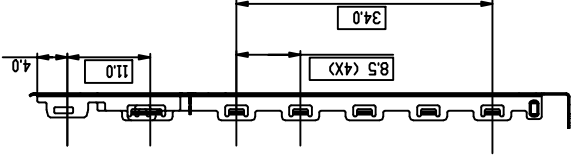
1

PRODUCT NO.
10030581-3X0LF

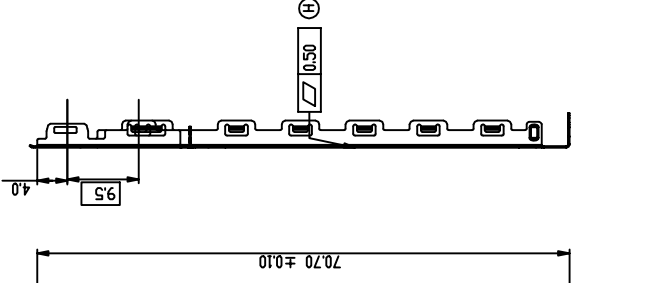
A



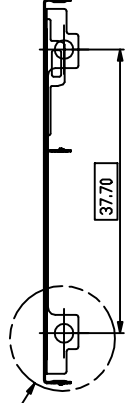
B



3

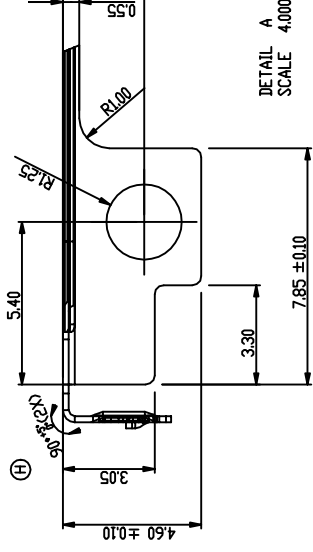


C



Copyright FCI.

D



TOP SHIELD
EXPRESSCARD/54
catalog no



2

1

3PDM: Rev:H

Looking for pricing, stock, or lifecycle information?

Click below to explore more details on WIN SOURCE:

-  [View 10030581-200LF on WIN SOURCE](#)
-  [Amphenol FCI Information](#)

Optimize Your Supply Chain with WIN SOURCE Solutions

-  Global Sourcing Solution
-  Obsolete Management
-  Cost Control Management
-  Shortage Management
-  Alternative Solution
-  Excess Inventory Management