



MMIC SURFACE MOUNT

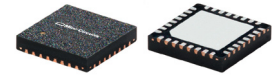
Power Splitter/Combiner

EP2W+

2 Way-0° 50Ω 0.7 to 6 GHz

THE BIG DEAL

- Ultra-Wide bandwidth, 0.7 to 6.0 GHz
- Excellent amplitude unbalance, 0.1 dB typ. to 6 GHz
- Good phase unbalance, 1 to 3 deg. typ.
- Small size, 5x5 mm
- Aqueous washable
- DC passing



Generic photo used for illustration purposes only
CASE STYLE: DG1677-2

+RoHS Compliant

The +Suffix identifies RoHS Compliance. See our web site for RoHS Compliance methodologies and qualifications

APPLICATIONS

- WIMAX
- ISM
- Instrumentation
- Radar
- WLAN
- Satellite communications
- LTE

PRODUCT OVERVIEW

Mini-Circuits' EP2W+ is a MMIC 2-way 0° splitter/combiner designed for wideband operation from 0.7 to 6.0 GHz supporting many applications requiring high performance across a wide frequency range including all the LTE bands through WiMax and WiFi, as well as instrumentation and more. This model provides excellent power handling up to 2.5W (as a splitter) with low insertion loss, good isolation, and low phase and amplitude unbalance in a tiny 5x5mm QFN package. Manufactured using GaAs IPD technology, the EP2W+ provides a high level of ESD protection and excellent repeatability.

KEY FEATURES

Feature	Advantages
Wideband, 0.7 to 6.0 GHz	One power splitter can be used in all the LTE bands through WiMax and WiFi, saving component count. Also ideal for wideband applications such as military and instrumentation.
Tiny size, 5 x 5 mm QFN package	Tiny footprint saves space in dense layouts while providing low inductance, repeatable transitions, and excellent thermal contact to the PCB.
Excellent power handling <ul style="list-style-type: none"> • 2.5W as a splitter • 1.7W internal dissipation as a combiner 	In power combiner applications, half the power is dissipated internally. EP2W+ is designed to handle 1.7W internal dissipation as a combiner allowing reliable operation without excessive temperature rise. Similar splitters implemented as Wilkinson splitters on PCB require big resistors and additional heat sinking. As a splitter, EP2W+ can handle up to 2.5W in a very small package.
DC Passing up to 0.4A	DC current passing is helpful in applications where both RF & DC need to pass through the DUT, such as antenna mounted hardware.





ELECTRICAL SPECIFICATIONS¹ AT 25°C

Parameter	Frequency (GHz)	Min.	Typ.	Max.	Unit
Frequency Range		0.7		6.0	GHz
Insertion Loss ² above 3.0 dB	0.7 - 1.5	—	0.9	1.5	dB
	1.5 - 3.0	—	1.3	1.9	
	3.0 - 6.0	—	1.8	2.5	
Isolation	0.7 - 1.5	8.6	11.6	—	dB
	1.5 - 3.0	16.8	19.8	—	
	3.0 - 6.0	16.4	19.4	—	
Phase Unbalance	0.7 - 1.5	—	0.5	2.5	Degree
	1.5 - 3.0	—	0.9	2.9	
	3.0 - 6.0	—	1.7	6.0	
Amplitude Unbalance	0.7 - 1.5	—	0.1	0.3	dB
	1.5 - 3.0	—	0.1	0.3	
	3.0 - 6.0	—	0.1	0.4	
VSWR (Port S)	0.7 - 1.5	—	1.6	—	:1
	1.5 - 3.0	—	1.5	—	
	3.0 - 6.0	—	1.6	—	
VSWR (Port 1-2)	0.7 - 1.5	—	1.3	—	:1
	1.5 - 3.0	—	1.3	—	
	3.0 - 6.0	—	1.4	—	

1. Tested on Mini-Circuits Test Board TB-880+

2. Insertion Loss Values are de-embedded from Test Board Loss.

MAXIMUM RATINGS

Parameter	Ratings
Operating temperature	-40°C to 85°C
Storage temperature	-65°C to 150°C
Power Input (as a splitter)	2.5W ³ Max. at 25°C
Internal Dissipation	1.7W ⁴ Max. at 25°C
DC Current	0.4A Max.

3. Derate linearly to 1.25W at 85°C

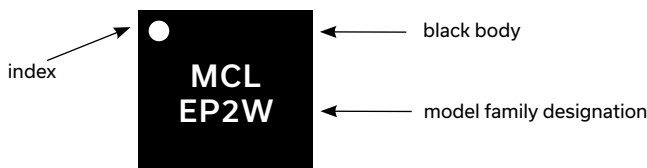
4. Derate linearly to 1.1W at 85°C

Permanent damage may occur if any of these limits are exceeded.

PAD CONNECTIONS

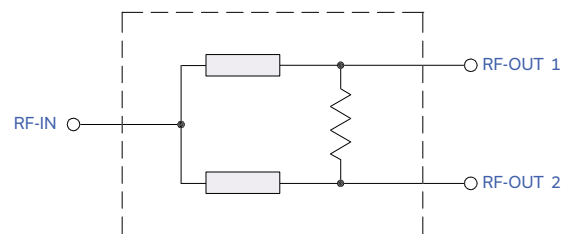
Function	Pad Number
SUM PORT	4
PORT 1	15
PORT 2	26
NOT USED, GROUND, EXTERNALLY	1-3, 5-14, 16-25, 27-32 & Paddle

PRODUCT MARKING



Marking may contain other features or characters for internal lot control

SIMPLIFIED ELECTRICAL SCHEMATIC





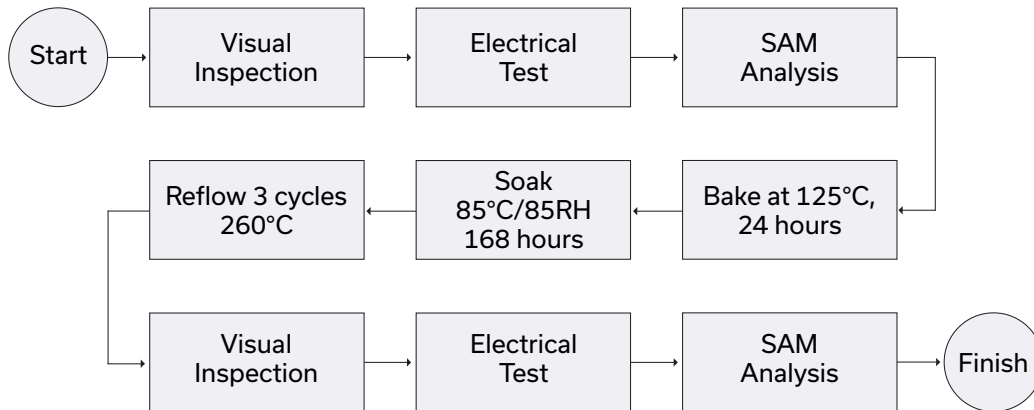
ADDITIONAL DETAILED TECHNICAL INFORMATION IS AVAILABLE ON OUR DASH BOARD. TO ACCESS [CLICK HERE](#)

Performance Data	Data Table Swept Graphs S-Parameter (S3P Files) Data Set (.zip file)
Case Style	DG1677-2 Plastic package, exposed paddle; lead finish: Matte Tin
Tape & Reel Standard quantities available on reel	F68 7" reels with 20, 50, 100, 200, 500 & 1000 devices
Suggested Layout for PCB Design	PL-488
Evaluation Board	TB-EP2W+ (Without connectors) TB-EP2WC+ (With connectors)
Environmental Ratings	ENV08T1

ESD RATING

Human Body Model (HBM): Class 2 (Pass 2000V) in accordance with ANSI/ESD STM 5.1 - 2001
Machine model: Class M3 (200 to <4000V) in accordance with ANSI/ESD 5.2-2009

MSL TEST FLOW CHART



- NOTES**
- A. Performance and quality attributes and conditions not expressly stated in this specification document are intended to be excluded and do not form a part of this specification document.
 - B. Electrical specifications and performance data contained in this specification document are based on Mini-Circuit's applicable established test performance criteria and measurement instructions.
 - C. The parts covered by this specification document are subject to Mini-Circuits standard limited warranty and terms and conditions (collectively, "Standard Terms"); Purchasers of this part are entitled to the rights and benefits contained therein. For a full statement of the standard. Terms and the exclusive rights and remedies thereunder, please visit Mini-Circuits' website at www.minicircuits.com/MCLStore/terms.jsp

Looking for pricing, stock, or lifecycle information?

Click below to explore more details on WIN SOURCE:

- ⊖ [View EP2W+](#) on WIN SOURCE
- ⊖ [Mini-Circuits](#) Information

Optimize Your Supply Chain with WIN SOURCE Solutions

- ✓ Global Sourcing Solution
- ✓ Obsolete Management
- ✓ Cost Control Management
- ✓ Shortage Management
- ✓ Alternative Solution
- ✓ Excess Inventory Management