



# THE DATASHEET OF ADE-1HW+



# Surface Mount Frequency Mixer

## ADE-1HW+

### Level 17 (LO Power +17 dBm) 5 to 750 MHz



Generic photo used for illustration purposes only  
CASE STYLE: CD542

**+RoHS Compliant**  
The +Suffix identifies RoHS Compliance. See our web site for RoHS Compliance methodologies and qualifications



Available Tape and Reel  
at no extra cost

Reel Size	Devices/Reel
7"	20, 50, 100, 200
13"	500, 1000

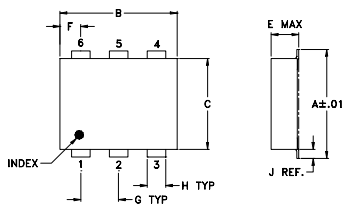
### Maximum Ratings

Operating Temperature	-40°C to 85°C
Storage Temperature	-55°C to 100°C
RF Power	200mW
IF Current	40mA
Permanent damage may occur if any of these limits are exceeded.	

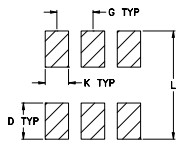
### Pin Connections

LO	6
RF	3
IF	2
GROUND	1,4,5

### Outline Drawing



### PCB Land Pattern

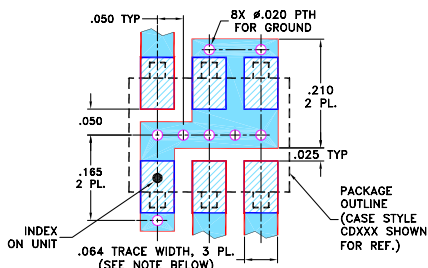


Suggested Layout,  
Tolerance to be within ±.002

### Outline Dimensions (inch/mm)

A	B	C	D	E	F	G
.272	.310	.220	.100	.112	.055	.100
6.91	7.87	5.59	2.54	2.84	1.40	2.54
H	J	K	L	wt		
.030	.026	.065	.300	grams		
0.76	0.66	1.65	7.62	0.20		

### Demo Board MCL P/N: TB-03 Suggested PCB Layout (PL-052)



- NOTES: 1. TRACE WIDTH IS SHOWN FOR ROGERS RO4350B WITH DIELECTRIC THICKNESS .030" ± .002"; COPPER: 1/2 OZ. EACH SIDE. FOR OTHER MATERIALS TRACE WIDTH MAY NEED TO BE MODIFIED.  
2. BOTTOM SIDE OF THE PCB IS CONTINUOUS GROUND PLANE.
- DENOTES PCB COPPER LAYOUT WITH SMOBC (SOLDER MASK OVER BARE COPPER)
  - DENOTES COPPER LAND PATTERN FREE OF SOLDER MASK

### Notes

- A. Performance and quality attributes and conditions not expressly stated in this specification document are intended to be excluded and do not form a part of this specification document.  
B. Electrical specifications and performance data contained in this specification document are based on Mini-Circuit's applicable established test performance criteria and measurement instructions.  
C. The parts covered by this specification document are subject to Mini-Circuits standard limited warranty and terms and conditions (collectively, "Standard Terms"); Purchasers of this part are entitled to the rights and benefits contained therein. For a full statement of the Standard Terms and the exclusive rights and remedies thereunder, please visit Mini-Circuits' website at [www.minicircuits.com/MCLStore/terms.jsp](http://www.minicircuits.com/MCLStore/terms.jsp)

### Features

- low conversion loss, 6.0 dB typ.
- excellent L-R isolation, 48 dB typ.
- excellent L-I isolation, 40 dB typ.
- aqueous washable
- protected by US patent 6,133,525

### Applications

- VHF/UHF receivers

### Electrical Specifications

FREQUENCY (MHz)	CONVERSION LOSS (dB)	LO-RF ISOLATION (dB)			LO-IF ISOLATION (dB)			IP3 at center band (dBm)										
		L	M	U	L	M	U											
5-750	DC-750	6.0	0.10	7.2	8.8	64	45	48	35	42	28	50	35	40	30	30	18	26

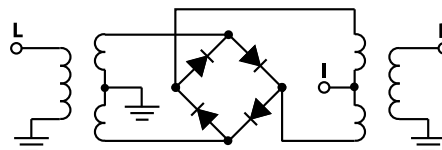
1 dB COMP.: +14 dBm typ.

L = low range [ $f_L$  to  $10 f_L$ ] M = mid range [ $10 f_L$  to  $f_U/2$ ] U = upper range [ $f_U/2$  to  $f_U$ ]  
m = mid band [ $2f_L$  to  $f_U/2$ ]

### Typical Performance Data

Frequency (MHz)		Conversion Loss (dB)	Isolation L-R (dB)	Isolation L-I (dB)	VSWR RF Port (:1)	VSWR LO Port (:1)
RF	LO	LO +17dBm	LO +17dBm	LO +17dBm	LO +17dBm	LO +17dBm
5.00	35.00	6.34	64.80	52.10	1.35	1.38
10.00	40.00	6.07	64.50	50.90	1.20	1.38
20.00	50.00	6.03	62.90	48.30	1.12	1.38
50.00	80.00	5.86	59.30	44.20	1.06	1.41
65.19	95.19	5.76	56.90	44.10	1.04	1.51
130.18	160.18	5.68	54.80	41.00	1.02	1.58
195.17	225.17	5.82	48.90	41.90	1.00	1.66
250.00	280.00	5.92	47.90	40.80	1.02	1.62
260.16	290.16	5.73	47.80	40.30	1.02	1.64
295.00	325.00	5.93	47.00	38.80	1.04	1.75
300.00	330.00	5.90	46.80	38.90	1.04	1.75
325.15	355.15	5.96	45.70	39.20	1.04	1.68
390.14	420.14	6.02	46.40	34.70	1.08	1.84
455.13	485.13	6.15	45.20	31.60	1.11	1.80
500.00	530.00	6.24	43.40	30.70	1.13	1.87
520.12	550.12	6.25	42.90	30.20	1.14	1.81
585.11	615.11	6.25	41.50	28.10	1.16	2.06
650.10	680.10	6.16	40.30	26.60	1.22	2.23
715.09	745.09	6.52	39.10	26.10	1.29	2.18
750.00	780.00	6.73	38.60	25.60	1.37	2.58

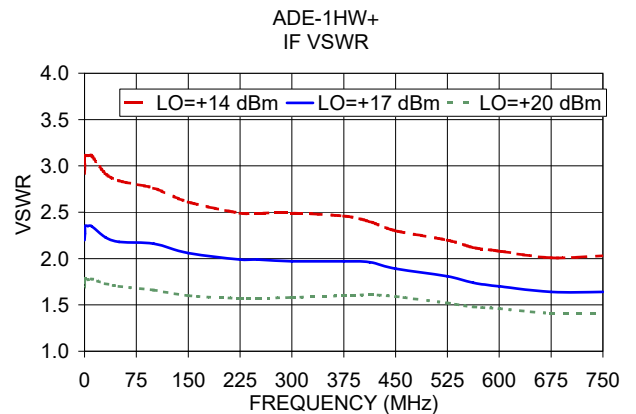
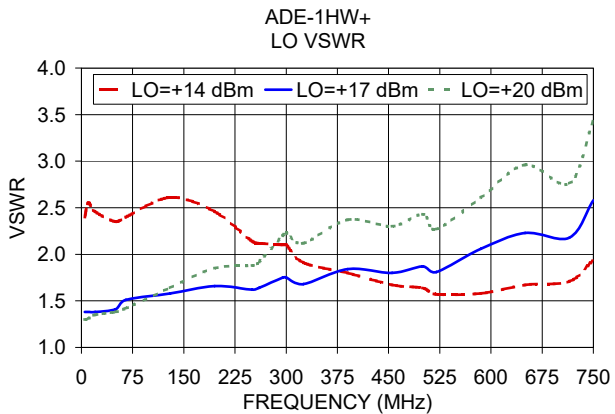
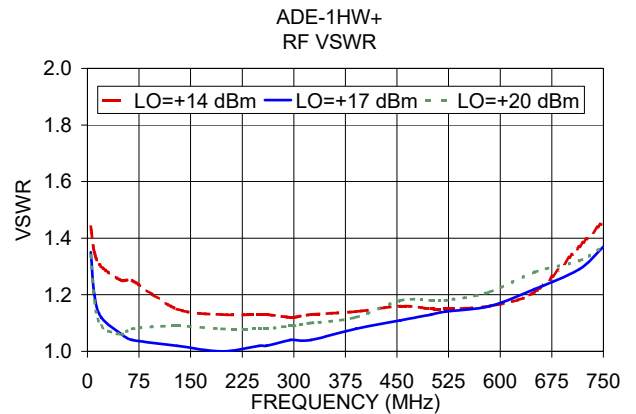
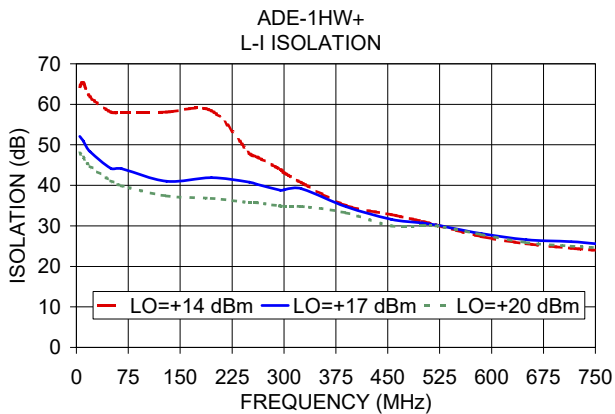
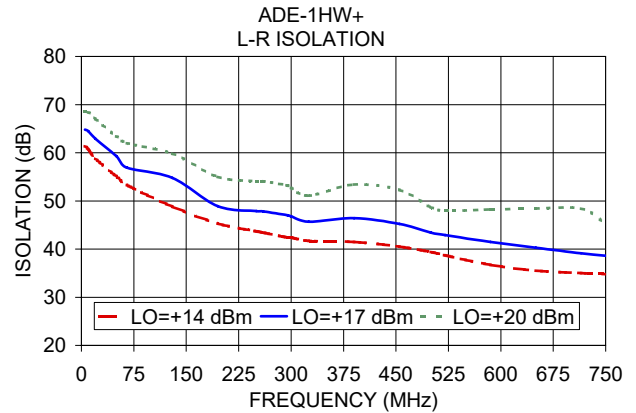
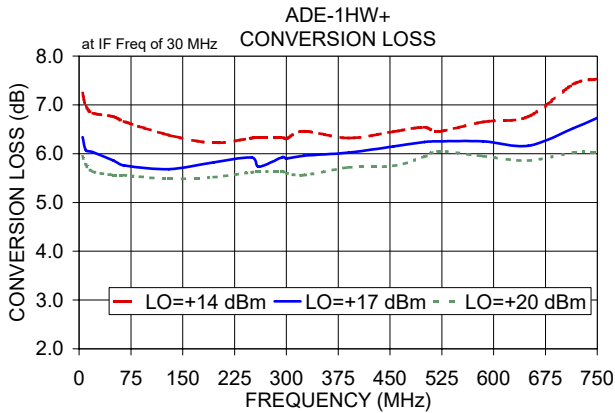
### Electrical Schematic



**Mini-Circuits®**

[www.minicircuits.com](http://www.minicircuits.com) P.O. Box 350166, Brooklyn, NY 11235-0003 (718) 934-4500 sales@minicircuits.com

REV. G  
M158496  
ADE-1HW  
ED-8339/1  
DJ/TD/CP/AM  
200415  
Page 1 of 2



**Notes**

- A. Performance and quality attributes and conditions not expressly stated in this specification document are intended to be excluded and do not form a part of this specification document.
- B. Electrical specifications and performance data contained in this specification document are based on Mini-Circuit's applicable established test performance criteria and measurement instructions.
- C. The parts covered by this specification document are subject to Mini-Circuits standard limited warranty and terms and conditions (collectively, "Standard Terms"); Purchasers of this part are entitled to the rights and benefits contained therein. For a full statement of the Standard Terms and the exclusive rights and remedies thereunder, please visit Mini-Circuits' website at [www.minicircuits.com/MCLStore/terms.jsp](http://www.minicircuits.com/MCLStore/terms.jsp)



## Looking for pricing, stock, or lifecycle information?

Click below to explore more details on WIN SOURCE:

 [View ADE-1HW+ on WIN SOURCE](#)

 [Mini-Circuits Information](#)

## Optimize Your Supply Chain with WIN SOURCE Solutions

-  Global Sourcing Solution
-  Obsolete Management
-  Cost Control Management
-  Shortage Management
-  Alternative Solution
-  Excess Inventory Management