



THE DATASHEET OF RBP-650+



Bandpass Filter

RBP-650+

50Ω 624 to 680 MHz

Maximum Ratings

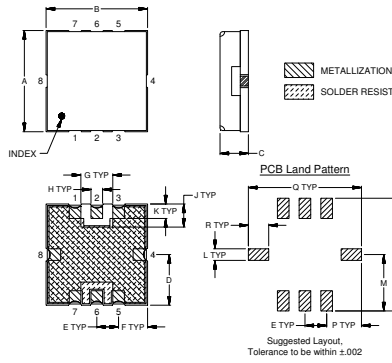
Operating Temperature	-40°C to 85°C
Storage Temperature	-55°C to 100°C
RF Power Input	0.5W at 25°C

Permanent damage may occur if any of these limits are exceeded.

Pin Connections

RF IN	2
RF OUT	6
GROUND	1,3,4,5,7,8

Outline Drawing

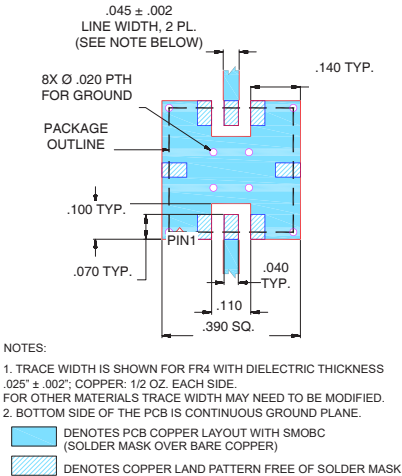


Outline Dimensions (inch/mm)

A	B	C	D	E	F	G	H	J
.350	.350	.100	.175	.075	.100	.110	.040	.080
8.89	8.89	2.54	4.45	1.91	2.54	2.79	1.02	2.03
K	L	M	N	P	Q	R	wt	
.050	.040	.195	.390	.120	.390	.070	grams	
1.27	1.02	4.95	9.91	3.05	9.91	1.78	0.25	

Note: Please refer to case style drawing for details

Demo Board MCL P/N: TB-332 Suggested PCB Layout (PL-176)



Features

- good VSWR, 1.5:1 typ. @ passband
- small size 0.35" x 0.35"
- shielded case
- aqueous washable

Applications

- harmonic rejection
- transmitters / receivers
- navigation



Generic photo used for illustration purposes only

CASE STYLE: GP731

+RoHS Compliant

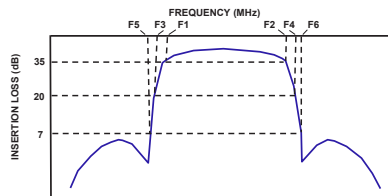
The +Suffix identifies RoHS Compliance. See our web site for RoHS Compliance methodologies and qualifications

Available Tape and Reel at no extra cost
 Reel Size Devices/Reel
 13" 10, 20, 50, 100, 200
 500, 1000

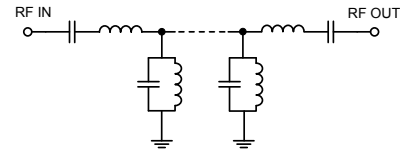
Bandpass Filter Electrical Specifications (T_{AMB} = 25°C)

CENTER FREQ. (MHz)	PASSBAND (MHz) (Loss < 7dB)	STOPBANDS (MHz)				VSWR (:1)		
		Loss > 20dB		Loss > 35dB		Passband		Stopband
F _c	F ₁ - F ₂	F ₃	F ₄	F ₅	F ₆	Typ.	Max.	Typ.
652	624 - 680	550	760	520	810 - 1000	1.5	-	18

Typical Frequency Response



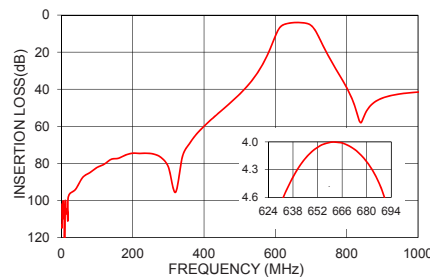
Functional Schematic



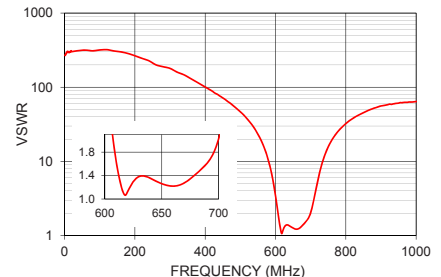
Typical Performance Data at 25°C

Frequency (MHz)	Insertion Loss (dB)	VSWR (:1)
1	113.30	269.77
200	74.50	266.10
500	42.61	46.62
520	38.59	37.21
550	31.13	23.35
580	20.57	10.30
590	16.05	6.51
610	7.39	1.63
624	5.10	1.27
650	4.09	1.26
652	4.06	1.25
680	4.21	1.43
710	7.72	3.19
730	15.04	8.55
760	25.93	19.29
770	29.21	22.80
810	43.00	35.35
1000	41.53	64.23

RBP-650+ INSERTION LOSS



RBP-650+ VSWR



Notes

- Performance and quality attributes and conditions not expressly stated in this specification document are intended to be excluded and do not form a part of this specification document.
- Electrical specifications and performance data contained in this specification document are based on Mini-Circuits' applicable established test performance criteria and measurement instructions.
- The parts covered by this specification document are subject to Mini-Circuits' standard limited warranty and terms and conditions (collectively, "Standard Terms"); Purchasers of this part are entitled to the rights and benefits contained therein. For a full statement of the Standard Terms and the exclusive rights and remedies thereunder, please visit Mini-Circuits' website at www.minicircuits.com/MCLStore/terms.jsp



Looking for pricing, stock, or lifecycle information?

Click below to explore more details on WIN SOURCE:

 [View RBP-650+ on WIN SOURCE](#)

 [Mini-Circuits Information](#)

Optimize Your Supply Chain with WIN SOURCE Solutions

-  Global Sourcing Solution
-  Obsolete Management
-  Cost Control Management
-  Shortage Management
-  Alternative Solution
-  Excess Inventory Management