



**THE DATASHEET OF  
BFCN-1860+**



Ceramic

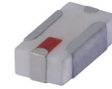
# Bandpass Filter

**BFCN-1860+**

50Ω 1580 to 2200 MHz

## The Big Deal

- LTCC construction
- Temperature stable from -55 to +100°C
- Small size (0.126 x .063 X .037")



CASE STYLE: FV1206-4

## Product Overview

The BFCN-1860+ LTCC bandpass filter covers the 1580 to 2200 MHz passband with 2 dB passband insertion loss and 20 dB upper/lower stopband rejection. This model handles up to 2.5W RF input power and provides a wide operating temperature range from -55 to +100°C. Utilizing LTCC multi-layer construction, the filter achieves excellent repeatability of performance and comes in a tiny 1206 ceramic package with wraparound terminations, minimizing performance variations due to parasitics and saving space in dense PCB layouts.

## Key Features

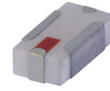
Feature	Advantages
LTCC Construction	Provides a rugged package well suited for tough environments such as high humidity and temperature extremes.
Tiny size (0.126 x .063 x .037")	Saves space in dense circuit boards and minimizes the effects of parasitics.
Wrap-around terminations	Provides excellent solderability and easy visual inspection
Wide operating temperature range, -55 to +100°C	Enables reliable performance in extreme environments



# Ceramic Bandpass Filter

50Ω 1580 to 2200 MHz

## BFCN-1860+



Generic photo used for illustration purposes only

CASE STYLE: FV1206-4

**+RoHS Compliant**

The +Suffix identifies RoHS Compliance. See our web site for RoHS Compliance methodologies and qualifications

Available Tape and Reel at no extra cost

Reel Size	Devices/Reel
7"	20, 50, 100, 200, 500, 1000, 3000

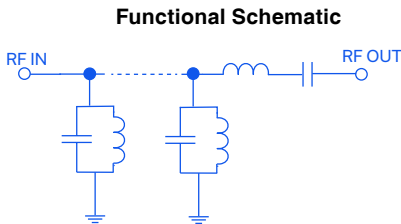
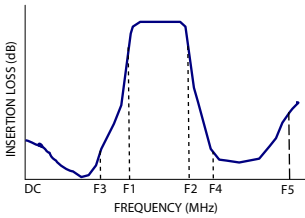
### Features

- Good VSWR, 1.5:1 typ. @ passband
- Small size(0.126 x .063 x .037)
- Temperature stable
- LTCC construction

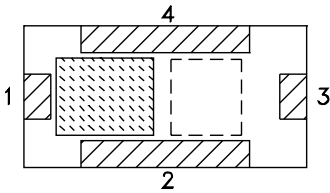
### Applications

- Harmonic rejection
- Transmitters / Receivers

### Specification Definition



### Top View



### Pad Connections

Input	1
Output	3
Ground	2,4

### Electrical Specifications<sup>1,2</sup> at 25°C

Parameter	F#	Frequency (MHz)	Min.	Typ.	Max.	Unit
Pass Band	Center Frequency	—	—	1860	—	MHz
	Insertion Loss	F1 - F2	—	2.0	3.5	dB
	VSWR	F1 - F2	1580 - 2200	—	1.5	2.5
Stop Band, Lower	Insertion Loss	DC - F3	—	20	—	dB
	VSWR	DC - F3	1300	—	20	:1
Stop Band, Upper	Insertion Loss	F4 - F5	—	20	—	dB
	VSWR	F4 - F5	2600 - 4800	—	15	:1

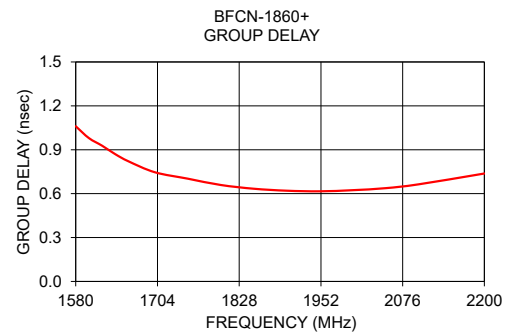
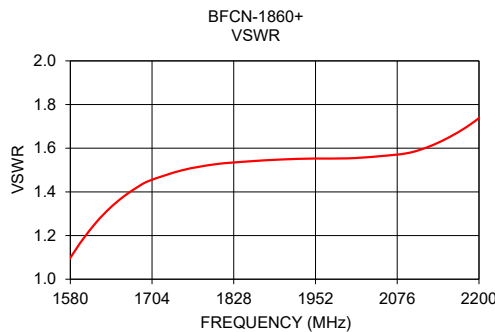
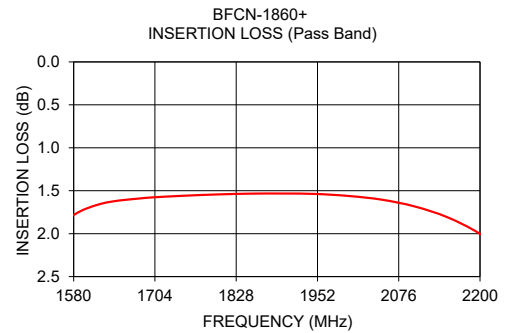
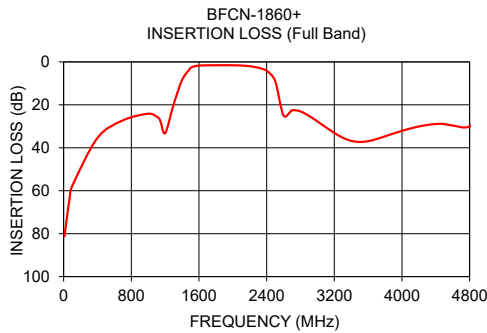
1. Measured on Mini-Circuits Characterization Test Board TB-824+.

2. This filter is not intended for use as a DC Blocking circuit element. In Application where DC voltage is present at either input or output ports, blocking capacitors are required at the corresponding RF port.

### Maximum Ratings

Operating Temperature	-55°C to +100°C
Storage Temperature	-55°C to +100°C
RF Power Input*	2.5W at 25°C

\*Passband rating, derate linearly to 0.7W at 100°C ambient  
Permanent damage may occur if any of these limits are exceeded.



### Full Band Performance

### Pass Band Performance

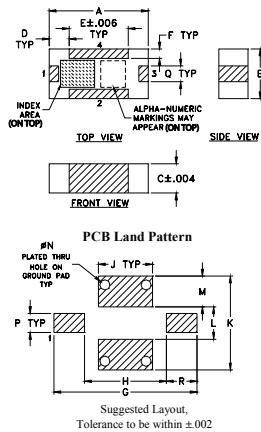
Frequency (MHz)	Insertion Loss (dB)	VSWR (:1)	Frequency (MHz)	Insertion Loss (dB)	Group Delay (nsec)
10	81.30	72.38	1580	1.78	1.06
40	72.24	67.32	1600	1.71	0.98
100	57.92	60.68	1620	1.66	0.93
400	35.41	43.01	1640	1.62	0.87
1000	24.12	22.58	1660	1.61	0.82
1300	19.87	10.75	1700	1.58	0.75
1580	1.78	1.10	1750	1.56	0.70
1660	1.61	1.38	1800	1.54	0.66
2000	1.56	1.55	1850	1.53	0.63
2200	2.00	1.74	1900	1.53	0.62
2600	24.98	5.02	1950	1.54	0.62
3000	27.70	17.47	2000	1.56	0.62
3500	37.29	23.88	2050	1.60	0.64
4100	31.00	24.03	2100	1.68	0.66
4800	30.01	2.93	2200	2.00	0.74

### Pad Connections

Input	1
Output	3
Ground	2,4

### Product Marking: GK

### Outline Drawing



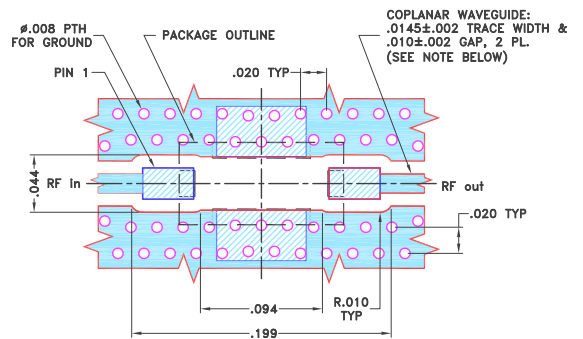
### Outline Dimensions (inch mm)

A	B	C	D	E	F	G	H	J
.126	.063	.037	.026	.075	.012	.182	.104	.069
3.20	1.60	0.94	0.66	1.91	0.30	4.62	2.64	1.75
K	L	M	N	P	Q	R	wt	
.119	.041	.039	.013	.024	.020	.039	grams	
3.02	1.04	0.99	0.33	0.61	0.51	0.99	.020	

### Additional Notes

- Performance and quality attributes and conditions not expressly stated in this specification document are intended to be excluded and do not form a part of this specification document.
- Electrical specifications and performance data contained in this specification document are based on Mini-Circuit's applicable established test performance criteria and measurement instructions.
- The parts covered by this specification document are subject to Mini-Circuits standard limited warranty and terms and conditions (collectively, "Standard Terms"); Purchasers of this part are entitled to the rights and benefits contained therein. For a full statement of the Standard Terms and the exclusive rights and remedies thereunder, please visit Mini-Circuits' website at [www.minicircuits.com/MCLStore/terms.jsp](http://www.minicircuits.com/MCLStore/terms.jsp)

### Demo Board MCL P/N: TB-824+ Suggested PCB Layout (PL-454)



### NOTES:

- TRACE WIDTH PARAMETERS ARE SHOWN FOR ROGERS R04350B WITH DIELECTRIC THICKNESS .0066"±.0007". COPPER: 1/2 OZ. EACH SIDE. FOR OTHER MATERIALS TRACE WIDTH AND GAP MAY NEED TO BE MODIFIED.
- BOTTOM SIDE OF THE PCB IS CONTINUOUS GROUND PLANE.

- DENOTES PCB COPPER LAYOUT WITH SMOBC (SOLDER MASK OVER BARE COPPER).
- DENOTES COPPER LAND PATTERN FREE OF SOLDER MASK.

## Looking for pricing, stock, or lifecycle information?

Click below to explore more details on WIN SOURCE:

 [View BFCN-1860+](#) on WIN SOURCE

 [Mini-Circuits](#) Information

## Optimize Your Supply Chain with WIN SOURCE Solutions

-  Global Sourcing Solution
-  Obsolete Management
-  Cost Control Management
-  Shortage Management
-  Alternative Solution
-  Excess Inventory Management