



**THE DATASHEET OF
AZ3028-04P**





Features

- Transient Protection for 2 Differential Line Pairs (4 lines) with Bi-directional.
- Provide Transient Protection for the Protected Differential Line Pair to
IEC 61000-4-2 (ESD) ±30kV (contact/air)
IEC 61000-4-4 (EFT) 60A (5/50ns)
IEC 61000-4-5 (Lightning) 30A (8/20µs)
Cable Discharge Event (CDE)
- JEDEC SO-8 Package.
- Specific Pin Out For Easy Board Layout.
- Fast Turn-On and Low Clamping Voltage.
- Low Operating Voltage: 2.8V.
- Low Leakage Current
- Solid-State Silicon-Avalanche and Active Circuit Triggering Technology.
- ROHS part is available
- Green part is available

Applications

- WAN/LAN Device
- 10/100/1000 Ethernet
- Switching Systems
- Computers
- Instruments
- Differential Inputs

Description

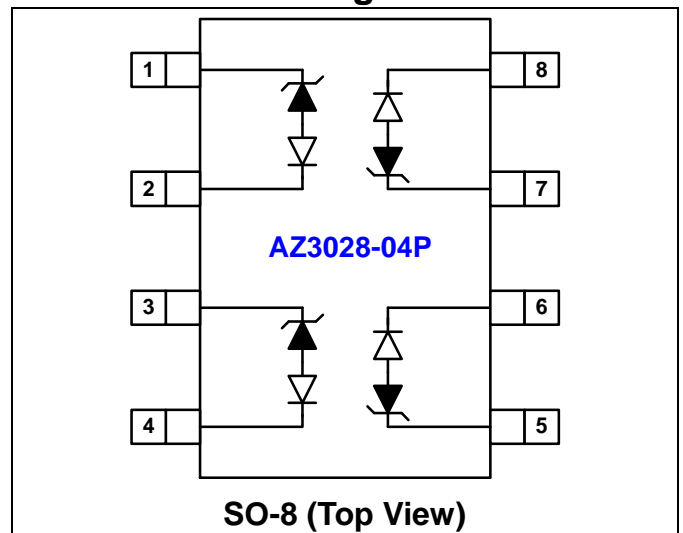
AZ3028-04P is a design which includes bi-directional surge rated clamping cells to protect two differential high speed data-line pairs in an electronic systems. The AZ3028-04P has been specifically designed to protect sensitive components which are connected to the differential line pairs from over-voltage damage and latch-up caused by Electrostatic Discharging (ESD), Electrical Fast Transients (EFT), Lightning, and Cable Discharge Event (CDE). AZ3028-04P is a unique design which includes

proprietary clamping cells in a single package. During transient conditions, the proprietary clamping cells provide low clamping voltages to minimize the stress on the protected components.

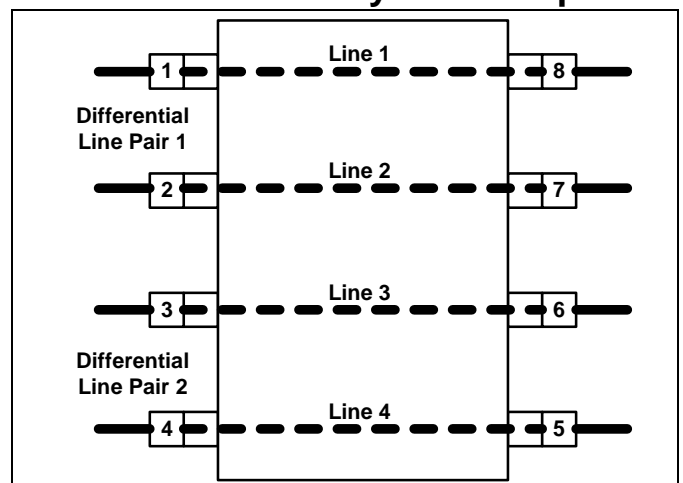
AZ3028-04P is bi-directional and may be used on lines where the signal swings above and below ground.

AZ3028-04P may be used to meet the ESD immunity requirements of IEC 61000-4-2, Level 4 (±15kV air, ±8kV contact discharge).

Circuit Diagram / Pin Configuration



Circuit Board Layout Example





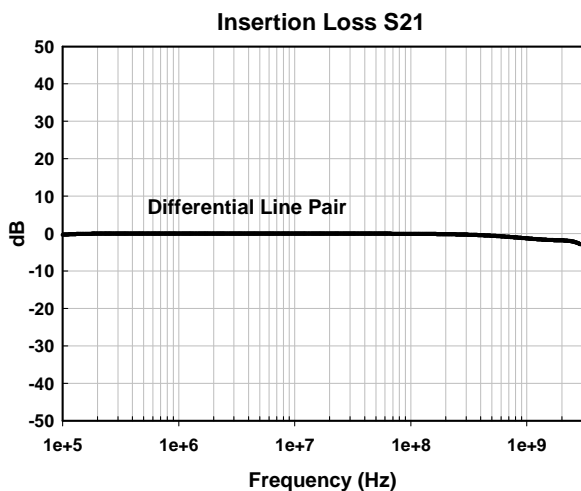
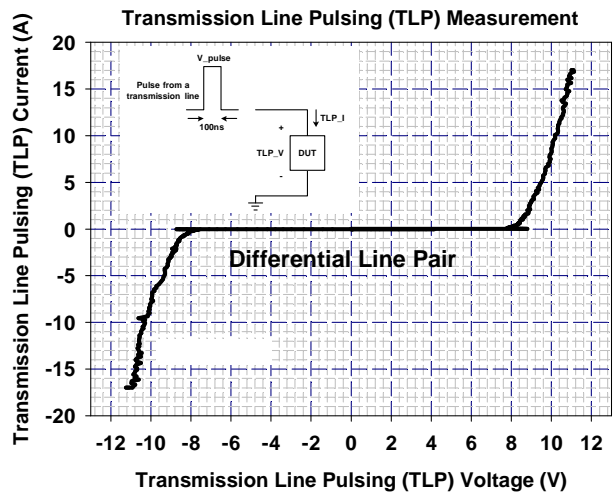
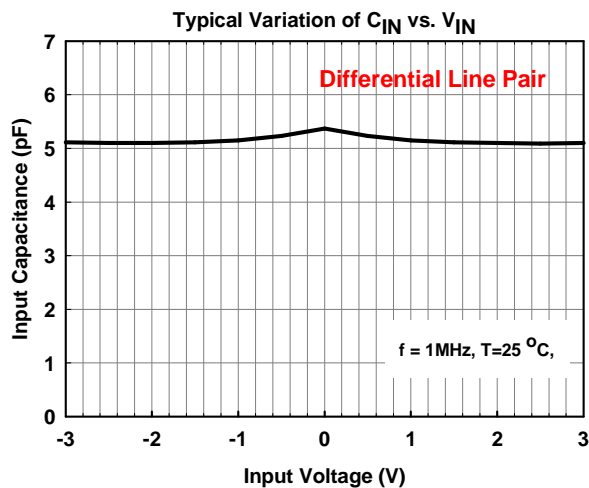
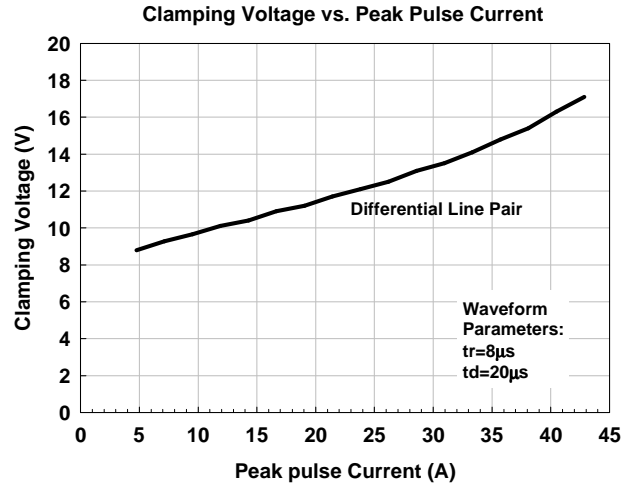
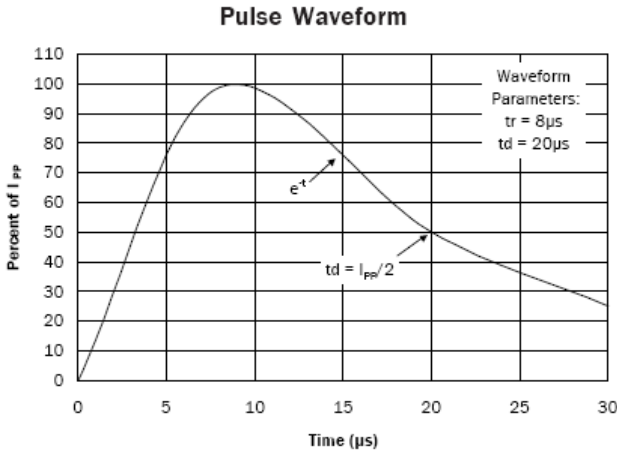
SPECIFICATIONS

ABSOLUTE MAXIMUM RATINGS			
PARAMETER	SYMBOL	RATING	UNITS
Peak Pulse Current (tp =8/20us) for each differential line pair	I_{PP}	30	A
ESD per IEC 61000-4-2 (Contact /Air) for each differential line pair	V_{ESD}	±30	kV
Lead Soldering Temperature	T_{SOL}	260 (10 sec.)	°C
Operating Temperature	T_{OP}	-55 to +125	°C
Storage Temperature	T_{STO}	-55 to +150	°C

ELECTRICAL CHARACTERISTICS						
PARAMETER	SYMBOL	CONDITIONS	MIN	TYP	MAX	UNITS
Reverse Stand-Off Voltage	V_{RWM}	$T=25\text{ }^{\circ}\text{C}$.			2.8	V
Reverse Leakage Current	I_{Leak}	$V_{RWM} = 2.8\text{V}$, $T=25\text{ }^{\circ}\text{C}$ (Each Line)			1	μA
Reverse Breakdown Voltage	V_{BV}	$I_{BV} = 1\text{mA}$, $T=25\text{ }^{\circ}\text{C}$. (Each Differential Line Pair)	3			V
Snap-Back Voltage	V_{SB}	$I_{SB} = 50\text{mA}$. (Each Differential Line Pair)	2.8			V
Clamping Voltage	V_{CL}	$I_{PP}=5\text{A}$, $tp=8/20\text{us}$, $T=25\text{ }^{\circ}\text{C}$. (Each Differential Line Pair)			10	V
Clamping Voltage	V_{CL}	$I_{PP}=24\text{A}$, $tp=8/20\text{us}$, $T=25\text{ }^{\circ}\text{C}$. (Each Differential Line Pair)			13	V
Clamping Voltage	V_{CL}	$I_{PP}=30\text{A}$, $tp=8/20\text{us}$, $T=25\text{ }^{\circ}\text{C}$. (Each Differential Line Pair)			15	V
Channel Input Capacitance	C_{IN}	$V_R = 0\text{V}$, $f = 1\text{MHz}$, $T=25\text{ }^{\circ}\text{C}$. (Each Differential Line Pair)		5.5		pF



Typical Characteristics



Applications Information

The AZ3028-04P is designed to protect four lines against System ESD/EFT/Lightning pulses by clamping them to an acceptable reference. It provides bi-directional protection.

The usage of the AZ3028-04P is shown in Fig. 1. It can be configured to protect two high speed line pairs (four lines). The first line pair is connected to Pin-1, Pin-2, Pin-8, and Pin-7, simultaneously. The second line pair is connected to Pin-3, Pin-4, Pin-6, and Pin-5, simultaneously. The traces must be connected at the bottom of AZ3028-04P.

In order to obtain enough suppression of ESD induced transient, good circuit board is critical. Thus, the following guidelines are recommended:

- Minimize the path length between the protected lines and the AZ3028-04P.
- Place the AZ3028-04P near the input terminals or connectors to restrict transient coupling.
- The ESD current return path to ground should be kept as short as possible.
- Use ground planes whenever possible.
- NEVER route critical signals near board edges and near the lines which the ESD transience easily injects to.

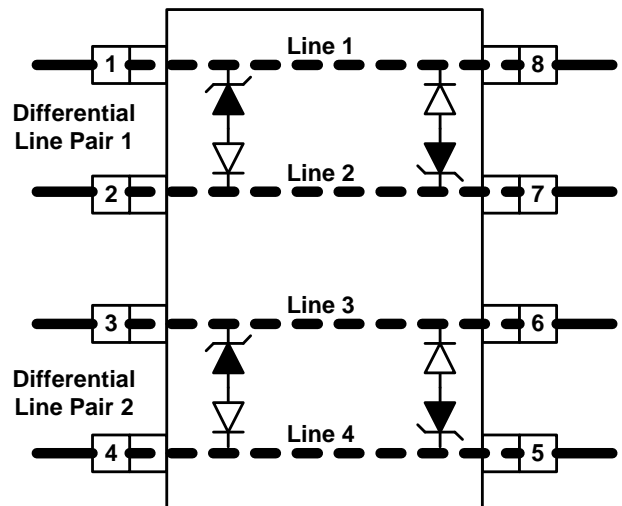
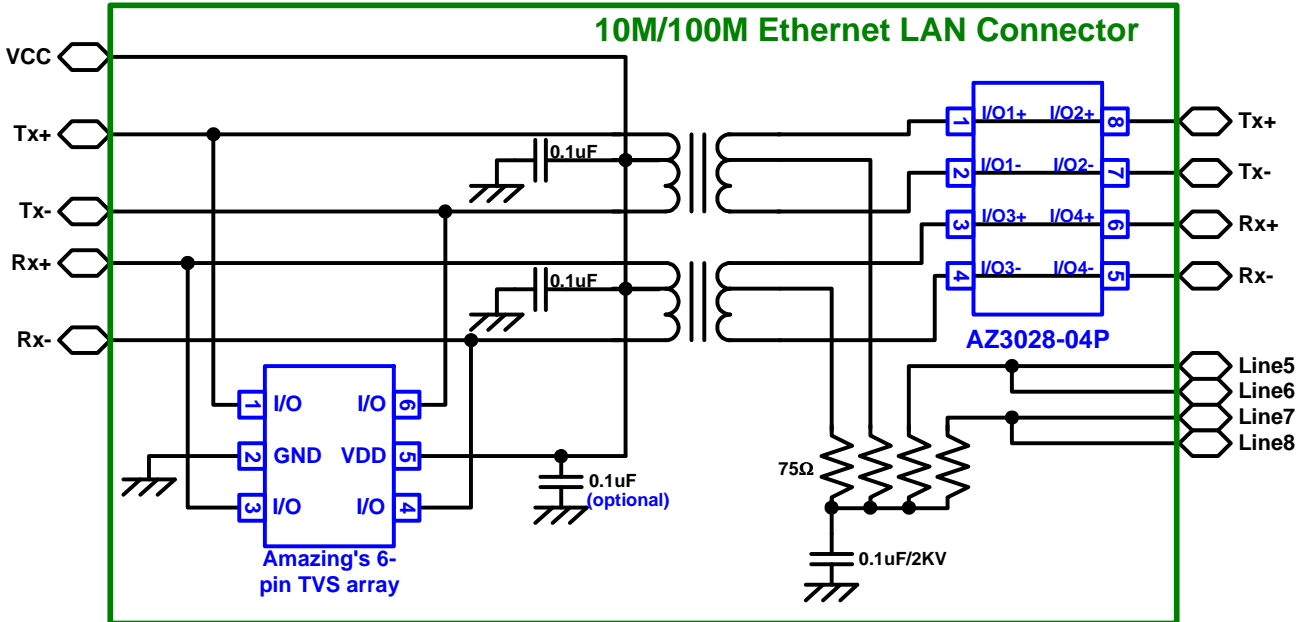


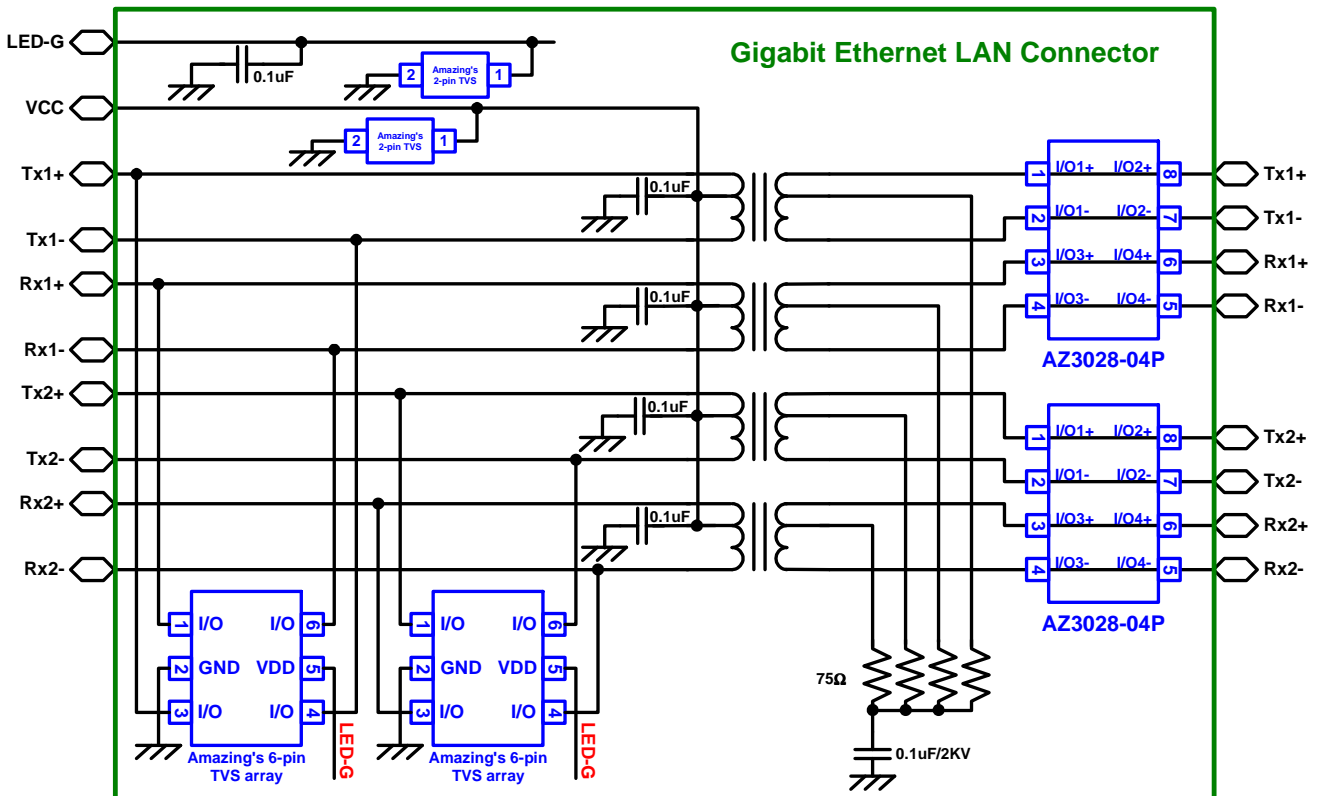
Fig. 1
Configuration for protecting two differential line pairs



Typical Applications



10M/100M Ethernet Protection Circuit

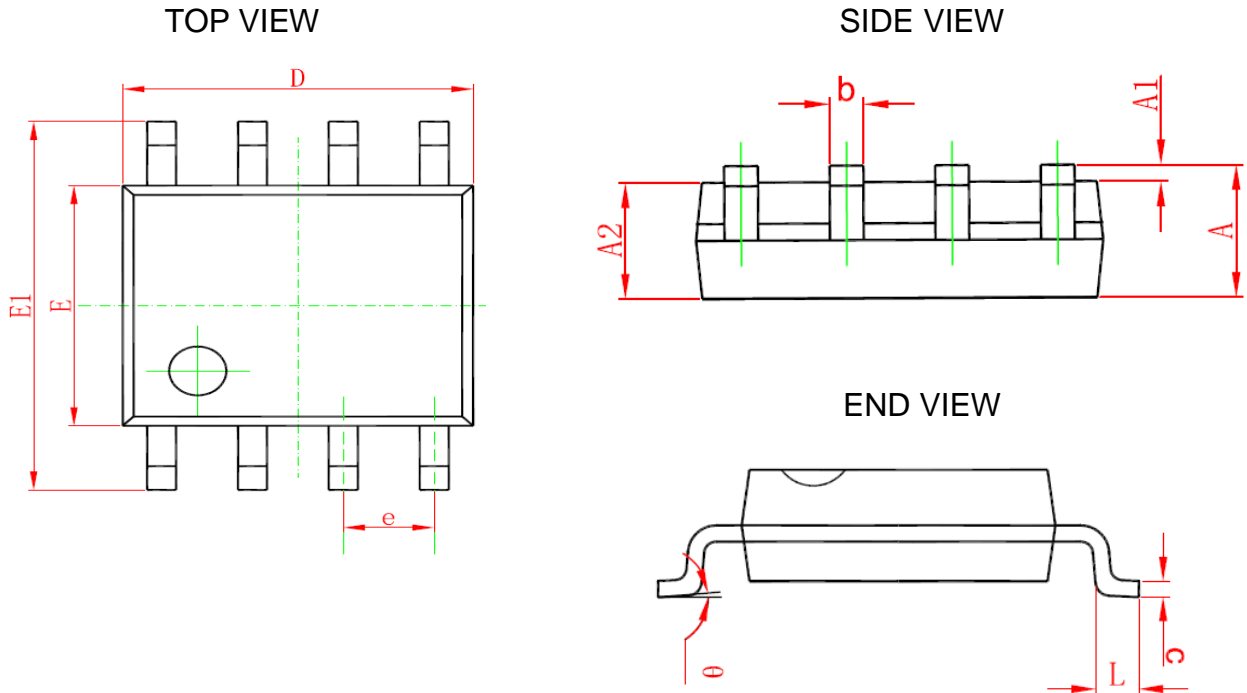


Gigabit Ethernet Protection Circuit



Mechanical Details

SO-8 PACKAGE DIAGRAMS

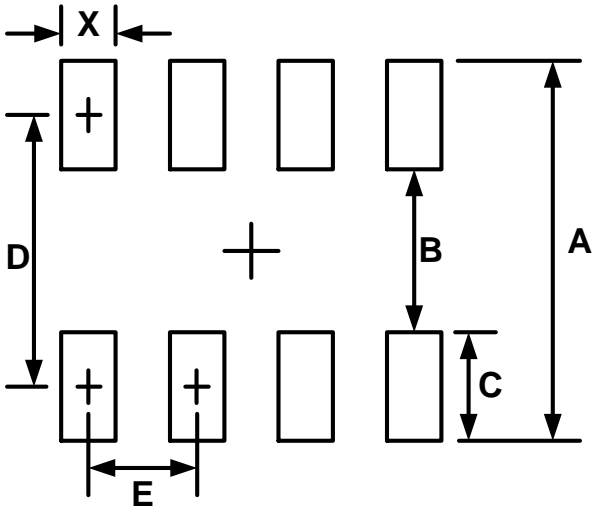


PACKAGE DIMENSIONS

Symbol	Millimeters		Inches	
	min	max	min	max
A	1.35	1.75	0.053	0.069
A1	0.10	0.25	0.004	0.010
A2	1.35	1.55	0.053	0.061
b	0.33	0.51	0.013	0.020
C	0.17	0.26	0.007	0.010
D	4.70	5.10	0.185	0.201
E	3.70	4.10	0.146	0.161
E1	5.80	6.20	0.228	0.244
e	1.27 BSC		0.05BSC	
L	0.40	1.27	0.016	0.050
θ	0	8	0	8



LAND LAYOUT

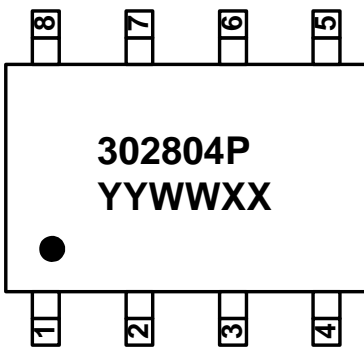


Dimensions		
Index	Millimeter	Inches
A	7.40	0.291
B	3.00	0.118
C	2.20	0.087
D	5.20	0.205
E	1.27	0.050
X	0.60	0.24

Notes:

This LAND LAYOUT is for reference purposes only. Please consult your manufacturing partners to ensure your company's PCB design guidelines are met.

MARKING CODE



302804P = Device Code
YYWWXX = Date Code

Part Number	Marking Code
AZ3028-04P (Rohs Part)	302804P YYWWXX
AZ3028-04P (Green Part)	302804P YYWWXXG

Ordering Information

PN#	Material	Type	Reel size	MOQ/interal box	MOQ/carton
AZ3028-04P.RDG	Green	T/R	13 inch	1 reel=2,500/box	5 box=12,500/carton



Revision History

Revision	Modification Description
Revision 2008/10/17	Preliminary Release.
Revision 2009/03/24	Formal Version Release.
Revision 2009/12/26	Update the PACKAGE DIMENSIONS.
Revision 2011/06/19	<ol style="list-style-type: none">1. Update the Company Logo.2. Add the Ordering Information.3. Eliminate the index of L1 in the Mechanical Details.

Looking for pricing, stock, or lifecycle information?

Click below to explore more details on WIN SOURCE:

 [View AZ3028-04P](#) on WIN SOURCE

 [Amazing Information](#)

Optimize Your Supply Chain with WIN SOURCE Solutions

-  Global Sourcing Solution
-  Obsolete Management
-  Cost Control Management
-  Shortage Management
-  Alternative Solution
-  Excess Inventory Management