



**THE DATASHEET OF
TCP-2-33W+**





Mini-Circuits

SURFACE MOUNT 

Power Splitter/Combiner TCP-2-33W+

2 Way-0° 50Ω 50 to 3000 MHz

FEATURES

- Wide frequency band, 50 to 3000 MHz
- Low insertion, 1.0 dB typ.
- External resistor required
- Aqueous washable
- Leads for excellent solderability
- Low cost



Generic photo used for illustration purposes only

CASE STYLE: DB1627

+RoHS Compliant

The +Suffix identifies RoHS Compliance. See our web site for RoHS Compliance methodologies and qualifications

APPLICATIONS

- Cellular
- PCN
- GPS

ELECTRICAL SPECIFICATIONS AT 25°C

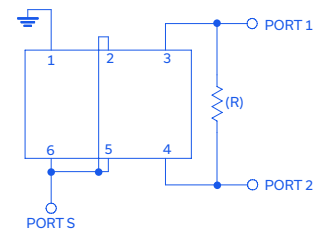
Parameter	Frequency (MHz)	Min.	Typ.	Max.	Unit
Frequency Range		50		3000	MHz
Insertion Loss, above 3.0 dB	50 - 500	—	0.6	0.9	dB
	500 - 1500	—	0.9	1.3	
	1500 - 3000	—	1.3	2.1	
Isolation	50 - 500	20	30	—	dB
	500 - 1500	16	21	—	
	1500 - 3000	8	11	—	
Phase Unbalance	50 - 500	—	0.7	2	Degree
	500 - 1500	—	1.6	5	
	1500 - 3000	—	6.5	10	
Amplitude Unbalance	50 - 500	—	0.06	0.2	dB
	500 - 1500	—	0.4	0.6	
	1500 - 3000	—	0.8	1.3	
VSWR (Port-S)	50 - 500	—	1.9	2.2	:1
	500 - 1500	—	1.9	2.2	
	1500 - 3000	—	1.8	2.1	
VSWR (Port 1-2)	50 - 500	—	1.9	2.2	:1
	500 - 1500	—	2.2	2.5	
	1500 - 3000	—	2.6	2.9	

MAXIMUM RATINGS

Parameter	Ratings
Operating temperature	-40°C to 85°C
Storage temperature	-55°C to 100°C
RF Power Input (as splitter)	0.5 W max.

Permanent damage may occur if any of these limits are exceeded.

FUNCTIONAL SCHEMATIC



REV. B
ECO-012869
TCP-2-33W+
HY/TD/CP/AM
220418





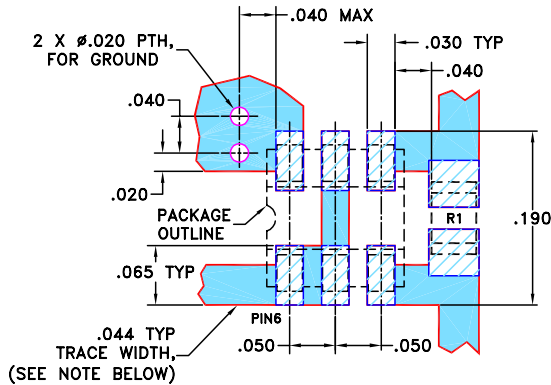
Power Splitter/Combiner TCP-2-33W+

PIN CONNECTIONS

SUM PORT	2,5,6
PORT 1	3
PORT 2	4
GROUND	1
EXT. RESISTOR 475Ω	3,4

PRODUCT MARKING: PF

DEMO BOARD MCL P/N: TB-86 SUGGESTED PCB LAYOUT (PL-008)

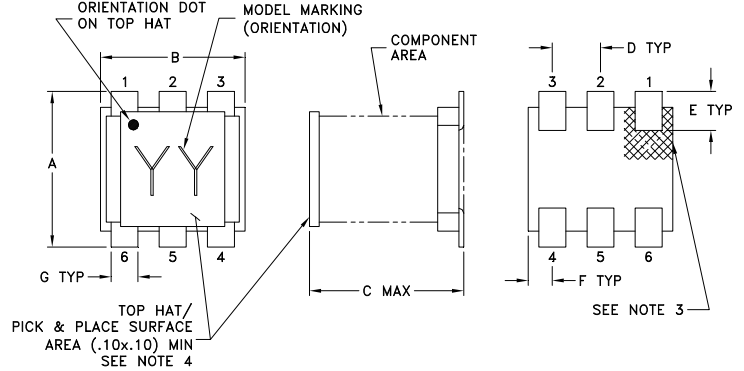


RESISTOR R1: 475 ± 1% Ohm, 0805 SIZE

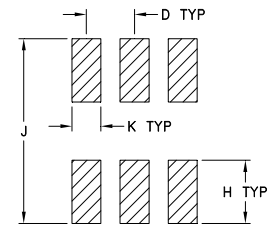
- NOTES: 1. TRACE WIDTH IS SHOWN FOR ROGERS R04350B WITH DIELECTRIC THICKNESS 0.020" ± 0.0015"; COPPER: 1/2 OZ. EACH SIDE. FOR OTHER MATERIALS TRACE WIDTH MAY NEED TO BE MODIFIED.
2. BOTTOM SIDE OF THE PCB IS CONTINUOUS GROUND PLANE.

- DENOTES PCB COPPER LAYOUT WITH SMOBC (SOLDER MASK OVER BARE COPPER)
- DENOTES COPPER LAND PATTERN FREE OF SOLDER MASK

OUTLINE DRAWING



PCB Land Pattern



SUGGESTED LAYOUT TOLERANCE TO BE WITHIN ±.002

OUTLINE DIMENSIONS (Inches/mm)

A	B	C	D	E	F	
.160	.150	.160	.050	.040	.025	
4.06	3.81	4.06	1.27	1.02	0.64	
G	H	J	K			wt
.028	.065	.190	.030			grams
0.71	1.65	4.83	0.76			0.15

TAPE & REEL INFORMATION: F47

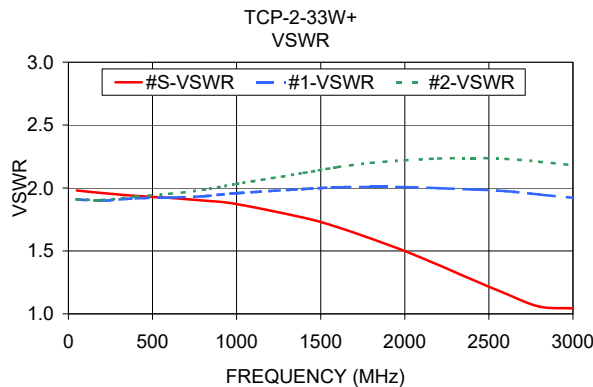
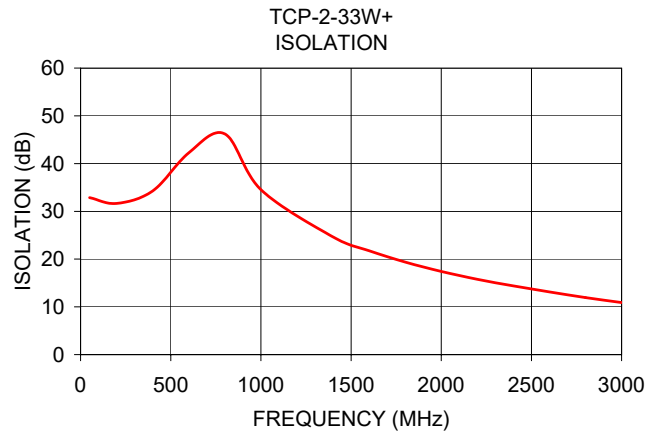
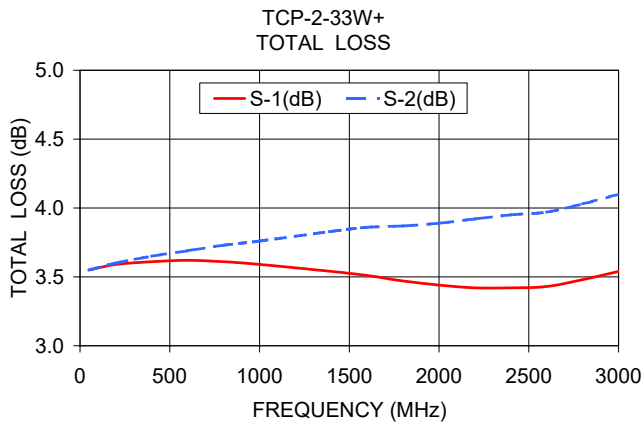


Power Splitter/Combiner TCP-2-33W+

TYPICAL PERFORMANCE DATA AT 25°C

Frequency (MHz)	Total Loss ¹ (dB)		Amplitude Unbalance (dB)	Isolation (dB)	Phase Unbalance (deg.)	VSWR (:1)		
	S-1	S-2				S	1	2
50.00	3.55	3.55	0.00	32.87	0.06	1.98	1.91	1.91
200.00	3.59	3.60	0.01	31.65	0.23	1.96	1.90	1.90
400.00	3.61	3.65	0.03	34.27	0.44	1.94	1.92	1.93
600.00	3.62	3.69	0.07	42.24	0.63	1.92	1.92	1.95
800.00	3.61	3.73	0.12	46.22	0.82	1.90	1.93	1.99
1000.00	3.59	3.76	0.17	34.55	0.96	1.87	1.96	2.03
1400.00	3.54	3.83	0.29	24.63	1.24	1.76	1.99	2.12
1600.00	3.51	3.86	0.35	21.75	1.38	1.69	2.01	2.17
1800.00	3.47	3.87	0.40	19.39	1.56	1.60	2.01	2.20
2000.00	3.44	3.89	0.45	17.42	1.84	1.50	2.01	2.22
2200.00	3.42	3.92	0.50	15.78	2.21	1.39	2.00	2.23
2400.00	3.42	3.95	0.53	14.40	2.62	1.27	1.99	2.24
2600.00	3.43	3.97	0.54	13.12	3.15	1.16	1.97	2.23
2800.00	3.48	4.03	0.55	11.95	3.88	1.06	1.95	2.21
3000.00	3.54	4.10	0.56	10.91	4.84	1.04	1.92	2.18

1. Total Loss = Insertion Loss + 3dB splitter loss.



NOTES

- A. Performance and quality attributes and conditions not expressly stated in this specification document are intended to be excluded and do not form a part of this specification document.
- B. Electrical specifications and performance data contained in this specification document are based on Mini-Circuit's applicable established test performance criteria and measurement instructions.
- C. The parts covered by this specification document are subject to Mini-Circuits standard limited warranty and terms and conditions (collectively, "Standard Terms"); Purchasers of this part are entitled to the rights and benefits contained therein. For a full statement of the standard. Terms and the exclusive rights and remedies thereunder, please visit Mini-Circuits' website at www.minicircuits.com/terms/viewterm.html

Looking for pricing, stock, or lifecycle information?

Click below to explore more details on WIN SOURCE:

 [View TCP-2-33W+](#) on WIN SOURCE

 [Mini-Circuits](#) Information

Optimize Your Supply Chain with WIN SOURCE Solutions

-  Global Sourcing Solution
-  Obsolete Management
-  Cost Control Management
-  Shortage Management
-  Alternative Solution
-  Excess Inventory Management