



**Specification Status: Released**

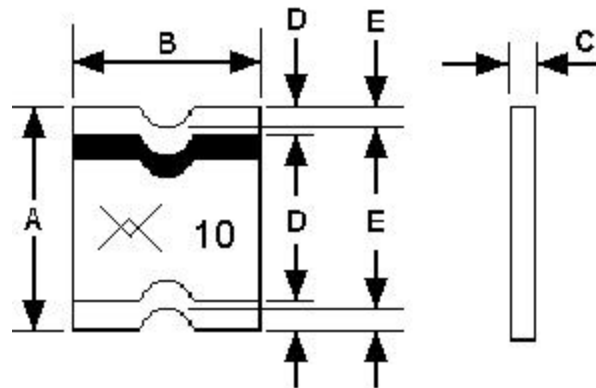
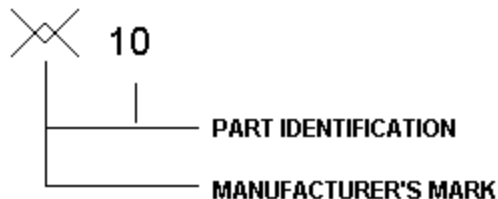
**Maximum Electrical Rating**

**Voltage: 30V<sub>DC</sub>**  
**Current: 10A**

**Notes:**

1. All terminations are tin/lead plated.
2. Devices can be wave soldered.
3. Drawing not to scale

**Marking:**



**TABLE I. DIMENSIONS:**

	A		B		C		D	E
	MIN	MAX	MIN	MAX	MIN	MAX	MIN	MIN
mm:	3.00	3.43	2.35	2.80	0.50	0.85	0.25	0.20
in.*	(0.118)	(0.135)	(0.092)	(0.111)	(0.019)	(0.034)	(0.010)	(0.008)

\*Rounded off approximation

**TABLE II. PERFORMANCE RATINGS:**

CURRENT RATINGS**						TIME TO TRIP **	RESISTANCE VALUES		TRIPPED-STATE POWER DISSIPATION**
AMPS AT 0°C		AMPS AT 20°C		AMPS AT 60°C		SECONDS AT 20°C, 0.50A MAX	OHMS AT 20°C		WATTS AT 20°C, 30V MAX
HOLD	TRIP	HOLD	TRIP	HOLD	TRIP		MIN	MAX*	
0.12	0.30	0.10	0.25	0.06	0.15	1.0	2.1	15.0	0.8



\*Maximum resistance is measured 1 hour after reflow.

\*\* Values specified were determined using PCB's with 0.030"X1.5 ounce copper traces.

Reference Documents: PS300, E. N. SMD1.0x  
 Precedence: This specification takes precedence over documents referenced herein.  
 Effectivity: Reference documents shall be the issue in effect on the date of invitation for bid.  
 CAUTION: Operation beyond the rated voltage or current may result in rupture, electrical arcing or flame.

## Looking for pricing, stock, or lifecycle information?

Click below to explore more details on WIN SOURCE:

-  [View MICROSMD010-2 on WIN SOURCE](#)
-  [Littelfuse Inc. Information](#)

## Optimize Your Supply Chain with WIN SOURCE Solutions

-  Global Sourcing Solution
-  Obsolete Management
-  Cost Control Management
-  Shortage Management
-  Alternative Solution
-  Excess Inventory Management