

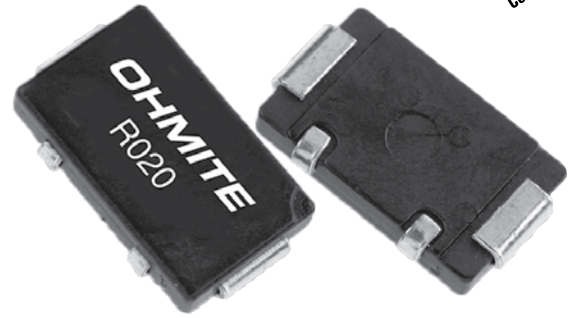


**THE DATASHEET OF
RW1S0CKR010FET**



RW1/RW2 Series

Surface Mount Four Terminal Current Sense



FEATURES

- Extremely low resistance and high precision tolerance
- Low T.C.R. achieved ($\pm 50 \text{ ppm}/^\circ\text{C}$)
- Flameproof UL94-V-0
- Marking: Black body color with white marking

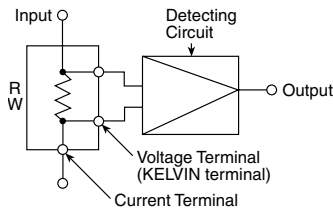
SERIES SPECIFICATIONS

Type	Power Rating (watts)	Resistance Range E-12 (m Ω)	Resistance Tolerance	Dielectric Withstanding Voltage	TCR (max. ppm/ $^\circ\text{C}$)	Qty./Reel
RW1S0CK	1	5m Ω - 50m Ω	1%	500V	± 50	1000
RW2S0DK	2	5m Ω - 50m Ω	1%	500V	± 50	1000

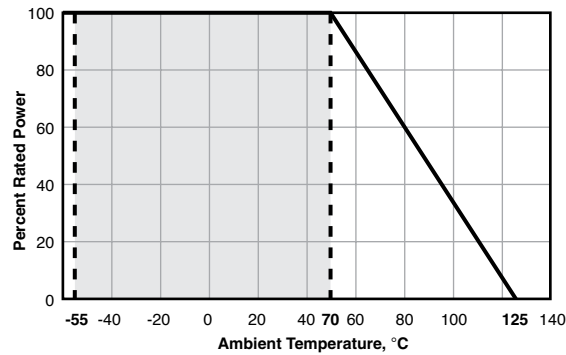
CHARACTERISTICS

TCR max.	$\pm 50 \text{ ppm}/^\circ\text{C}$
Rated Ambient Temp.	$+70^\circ\text{C}$
Operating Temp. Range	$-55^\circ\text{C} - +125^\circ\text{C}$

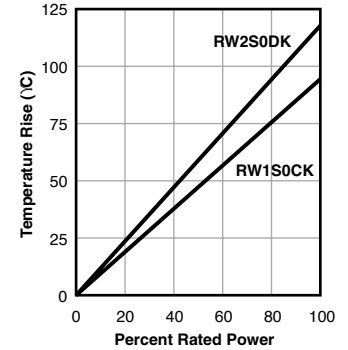
Typical Schematic



Derating



Surface Temperature Rise



PERFORMANCE DATA

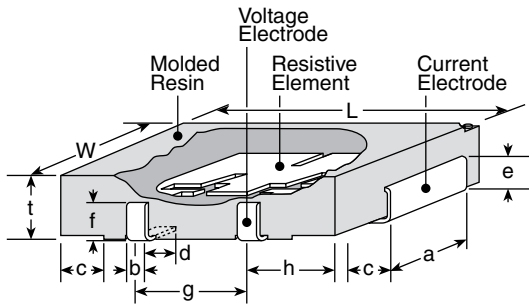
Parameter	Requirement ΔR		Test Method
	Limit	Typical	
Resistance	Within regulated tolerance	—	25°C
T.C.R.	Within specified T.C.R.	—	$+25^\circ\text{C}/-55^\circ\text{C}$ and $+25^\circ\text{C}/+125^\circ\text{C}$
Overload	$\pm 1.0\%$	$\pm 1.0\%$	Rated power x 5 for 5 seconds
Resistance to Solder Heat	$\pm 1.0\%$	$\pm 1.0\%$	$260^\circ\text{C} \pm 5^\circ\text{C}$, 10 seconds ± 1 second
Rapid Change of Temperature	$\pm 1.0\%$	$\pm 0.5\%$	-55°C (30 minutes), $+125^\circ\text{C}$ (30 minutes), 500 cycles
Moisture Resistance	$\pm 2.0\%$	$\pm 0.5\%$	$40^\circ\text{C} \pm 2^\circ\text{C}$, 90 - 95% RH, 1000 hours, 1.5 hr ON, 0.5 hr OFF cycle
Endurance at 70°C	$\pm 1.0\%$	$\pm 0.5\%$	$70^\circ\text{C} \pm 2^\circ\text{C}$, 1000 hours, 1.5 hr ON, 0.5 hr OFF cycle
Low Temperature Operation	$\pm 0.5\%$	$\pm 0.25\%$	-55°C , 1 hour
High Temperature Exposure	$\pm 0.5\%$	$\pm 0.25\%$	$+125^\circ\text{C}$, 100 hours

RW1/RW2 Series

Surface Mount Four Terminal Current Sense

DIMENSIONS

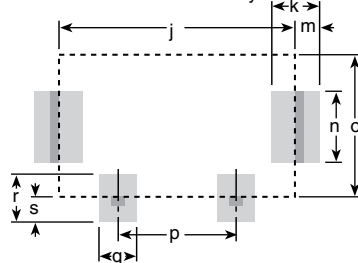
(in./mm)



	RW1S0CK	RW2S0DK
L	0.425±.02 (10.8±0.5)	0.504±.02 (12.8±0.5)
W	0.244±.012 (6.2±0.3)	0.323±.012 (8.2±0.3)
t	0.083±.008 (2.1±0.2)	0.122±.008 (3.1±0.2)
a	0.118±.012 (3.0±0.3)	0.197±.012 (5.0±0.3)
b	0.031±.008 (0.8±0.2)	0.039±.008 (1.0±0.2)
c	0.055±.02 (1.4±0.5)	0.079±.02 (2.0±0.5)
d	0.047±.02 (1.2±0.5)	0.079±.02 (2.0±0.5)
e	0.051±.012 (1.3±0.3)	0.087±.012 (2.2±0.3)
f	0.051±.012 (1.3±0.3)	0.087±.012 (2.2±0.3)
g	0.197±.004 (5.0±0.1)	0.236±.004 (6.0±0.1)
h	0.098±.004 (2.5±0.1)	0.118±.004 (3.0±0.1)
j	0.39 (10.0)	0.47 (12.0)
k	0.08 (2.0)	0.09 (2.3)
m	0.04 (1.0)	0.05 (1.15)
n	0.12 (3.0)	0.21 (5.3)
o	0.24 (6.0)	0.31 (8.0)
p	0.20 (5.0)	0.24 (6.0)
q	0.06 (1.6)	0.09 (2.2)
r	0.08 (2.0)	0.13 (3.2)
s	0.04 (1.0)	0.06 (1.6)

Land Pattern

Dimensions for reference only



ORDERING INFORMATION

RoHS Compliant

RW1S0CKR005FET

Type & Power Rating RW1S0CK = 1 watt RW2S0DK = 2 watt	Ohms R005 = 0.005Ω R050 = 0.05Ω	Tolerance F = 1% D = 0.5%	Packaging T = tape and reel (optional)
-------------------------------------------------------------	---------------------------------------	---------------------------------	-------------------------------------------

The part itself will be marked as follows:

CSR1
10m ohms D — Tolerance
F = 1%
D = 0.5%

Ohms
10m ohms = 0.01Ω

Standard Part Numbers for RW Series

Wattage:	1 watt		2 watt
	Tolerance: 1%		0.5%
Ohms	Series: RW1S0CK---FET	RW1S0CK---DET	RW2S0DK---FET
0.00500	RW1S0CKR005FET	RW1S0CKR005DET	RW2S0DKR005FET
0.01000	RW1S0CKR010FET	RW1S0CKR010DET	RW2S0DKR010FET
0.02500	RW1S0CKR025FET	RW1S0CKR025DET	RW2S0DKR025FET
0.05000	RW1S0CKR050FET	RW1S0CKR050DET	RW2S0DKR050FET

Looking for pricing, stock, or lifecycle information?

Click below to explore more details on WIN SOURCE:

 View [RW1S0CKR010FET](#) on WIN SOURCE

 [Ohmite](#) Information

Optimize Your Supply Chain with WIN SOURCE Solutions

-  Global Sourcing Solution
-  Obsolete Management
-  Cost Control Management
-  Shortage Management
-  Alternative Solution
-  Excess Inventory Management