

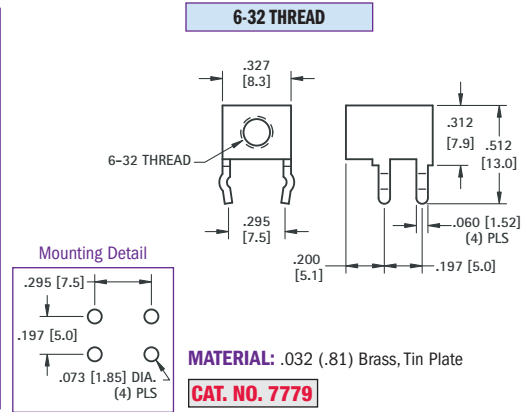
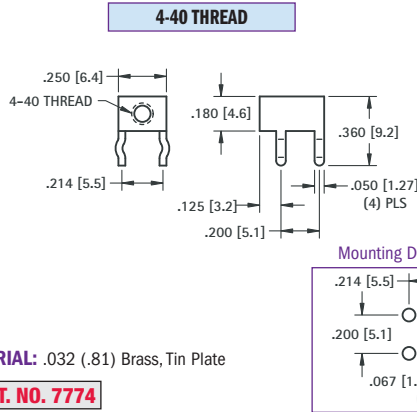
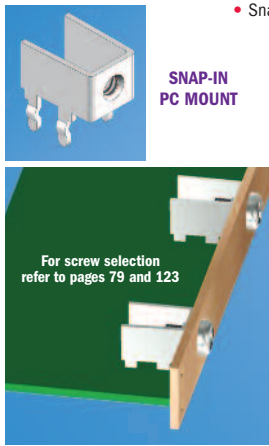


**THE DATASHEET OF**  
**4335**

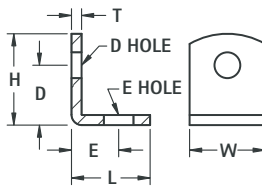


# SNAP-IN THREADED PC MOUNT BRACKETS

- Snaps in for wave soldering • Reduces assembly time • Easily mount into predrilled or punched holes • Stable no rock design



# UNIVERSAL CLEAR HOLE BRACKETS



CAT. NO.	H	L	W	D	D HOLE DIAMETER	E	E HOLE DIAMETER	T	MATERIAL	FINISH
<b>633</b>	.375 (9.5)	.375 (9.5)	.281 (7.1)	.218 (5.5)	.140 (3.6)	.218 (5.5)	.140 (3.6)	.032 (.81)	Brass	Nickel
<b>613</b>	.390 (9.9)	.453 (11.5)	.375 (9.5)	.234 (5.9)	.147 (3.7)	.299 (7.6)	.128 (3.3)	.032 (.81)	Brass	Nickel
<b>615</b>	.420 (10.7)	.343 (8.7)	.281 (7.1)	.281 (7.1)	.144 (3.7)	.203 (5.2)	.128 (3.3)	.032 (.81)	Brass	Tin
<b>4335</b>	.562 (14.3)	.562 (14.3)	.500 (12.7)	.412 (10.5)	.120 (3.0)	.411 (10.4)	.120 (3.0)	.062 (1.57)	Steel	Nickel
<b>4336</b>	.562 (14.3)	.562 (14.3)	.500 (12.7)	.412 (10.5)	.144 (3.7)	.412 (10.5)	.144 (3.7)	.062 (1.57)	Steel	Nickel
<b>618</b>	.628 (16.0)	.628 (16.0)	.375 (9.5)	.378 (9.6)	.169 (4.3)	.378 (9.6)	.169 (4.3)	.050 (1.27)	Brass	Tin
<b>619</b>	.687 (17.4)	.687 (17.4)	.375 (9.5)	.500 (12.7)	.144 (3.7)	.500 (12.7)	.144 (3.7)	.032 (.81)	Steel	Tin
<b>4326</b>	1.013 (25.7)	.487 (12.4)	.312 (7.9)	.816 (20.7)	.140 (3.6)	.332 (8.4)	.140 (3.6)	.050 (1.27)	Steel	Nickel
<b>620</b>	1.156 (29.4)	.656 (16.7)	.375 (9.5)	.906 (23.0)	.169 (4.3)	.420 (10.7)	.169 (4.3)	.032 (.81)	Steel	Tin

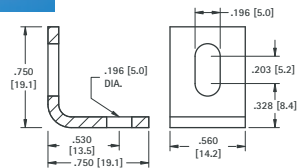
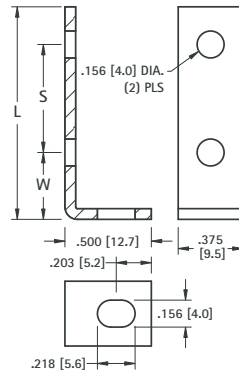
# BOARD BRACKETS



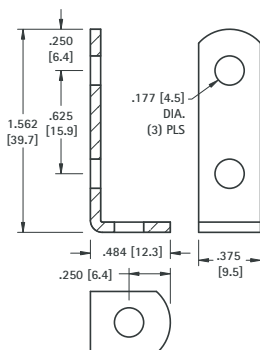
Originally designed for our line of standardized terminal boards; these brackets can also be used in other applications. See pages 148-149 for Turret Terminal Boards.

**MATERIALS:** .062 (1.57) Steel, Nickel Plate

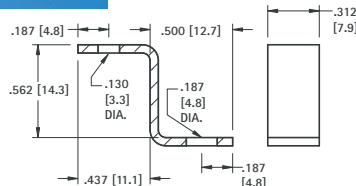
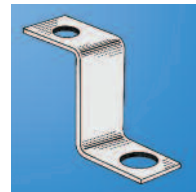
CAT. NO.	W	L	S
<b>1570</b>	.281 (7.1)	1.187 (30.1)	.750 (19.1)
<b>1556</b>	.375 (9.5)	1.625 (41.3)	1.000 (25.4)
<b>1571</b>	.281 (7.1)	1.625 (41.3)	1.187 (30.1)
<b>1567</b>	.375 (9.5)	2.125 (54.0)	1.500 (38.1)
<b>1568</b>	.375 (9.5)	2.625 (66.7)	2.000 (50.8)
<b>1569</b>	.375 (9.5)	3.125 (79.4)	2.500 (63.5)



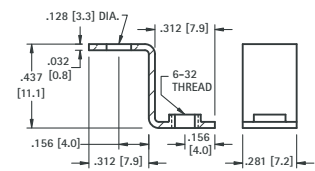
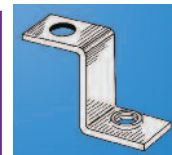
**CAT. NO. 4337** **MATERIAL:** .080 (2.03) Aluminum



**CAT. NO. 1564** **MATERIAL:** .062 (1.57) Steel, Nickel Plate



**CAT. NO. 4325** **MATERIAL:** .050 (1.27) Steel, Nickel Plate



**CAT. NO. 630** **MATERIAL:** .032 (.81) Brass, Tin Plate

## Looking for pricing, stock, or lifecycle information?

Click below to explore more details on WIN SOURCE:

- ⊖ [View 4335 on WIN SOURCE](#)
- ⊖ [Keystone Electronics Information](#)

## Optimize Your Supply Chain with WIN SOURCE Solutions

- ✓ Global Sourcing Solution
- ✓ Obsolete Management
- ✓ Cost Control Management
- ✓ Shortage Management
- ✓ Alternative Solution
- ✓ Excess Inventory Management