

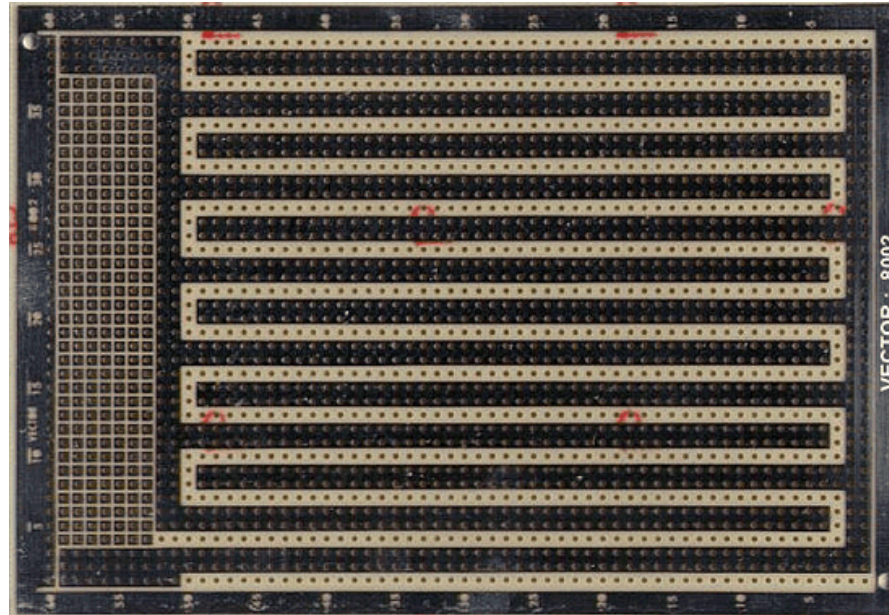


THE DATASHEET OF
8002




[Home](#)
[About Vector](#)
[Distributors](#)
[Sales](#)
[Contact Us](#)
[Catalog Request](#)

VECTORBOARD® CIRCBORD™ PART NO. : 8002



Description :

4.5" x 6.50", Hole Dia.: 0.042", Grid: 0.100" x 0.100"
 Interleaved Buses Pattern, Ideal for wire-wrap applications
 Power and ground buses etched onto wiring side only
 Bus surfaces solder coated for user convenience
 Mount components with 0.3", 0.6" & 0.9" lead spacing
 I/O area with square solder pads for mounting connector
 Single-sided with no etch & plating on reverse side
 Layout paper [Layout Paper\(PDF\)](#)

Circuit Pattern :	Interleaved Buses
Contacts :	N/A
16 Pin DIP Capacity :	36
Hole Diameter :	0.042" { 1.0668 mm }
Grid :	0.100" x 0.100" { 2.54mm X 2.54mm }
Dimension { H, W, T } :	4.50" x 6.50" x 0.062"
Material :	CEM-1
Wire-Wrap Terminals :	T44, T46, T49, T68
Solder Terminals :	T42-1
Wire-Wrap Socket Pins :	R32
NEMA Grade :	CEM-1
UL Flammability Class :	94V - 0

email us your requirements : inquire@vectorelect.com


11115 Vanowen St., North Hollywood, CA - 91605, USA

Tel: (818) 985 8208, (800) 423 5659; Fax: (818) 985 7708

Circbord®, Vectorbord® and VectorPak® are registered trademarks of Vector Electronics & Technology, Inc.
 CompactPCI® is a registered trademark of PCIMG. © 2001 Vector Electronics & Technology, Inc. - All Rights Reserved
webmaster@vectorelect.com

Looking for pricing, stock, or lifecycle information?

Click below to explore more details on WIN SOURCE:

 [View 8002](#) on WIN SOURCE

 [Vector Electronics](#) Information

Optimize Your Supply Chain with WIN SOURCE Solutions

-  Global Sourcing Solution
-  Obsolete Management
-  Cost Control Management
-  Shortage Management
-  Alternative Solution
-  Excess Inventory Management