



**THE DATASHEET OF  
C4AEJBW5550A3NJ**



## C4AE, Radial, 2 or 4 Leads, 450 – 1,100 VDC for DC Link

### Overview

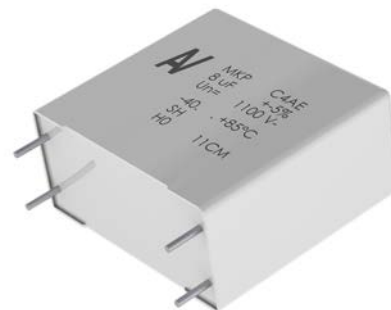
The C4AE capacitor is a polypropylene metallized film capacitor with a rectangular, plastic box-type design (white or grey in color) filled with resin, and uses 2 or 4 tinned copper wires.

### Applications

Typical applications include DC filtering and energy storage.

### Benefits

- Self-healing
- Low loss
- High ripple current
- High capacitance density
- High contact reliability
- Suitable for high frequency applications



### Part Number System

C4	A	E	Q	B	W	5270	A	3	N	J
Series	Type	Application	Rated Voltage (VDC)	Case	Terminals Code	Capacitance Code (pF)	C-Spec	Lead Diameter (mm)	Size Code: B x H x L (mm)	Tolerance
C4 = MKP Power Capacitors	A = Box, wire terminals	E = DC link	G = 450 H = 600 J = 700 O = 900 Q = 1,100	B = Box, plastic case	U = 2 pins W = 4 pins	Digits two – four indicate the first three digits of the capacitance value. First digit indicates the number of zeros to be added.	A = Standard grade	1 = 0.8 3 = 1.2	W = 11 x 20 x 31.5 X = 13 x 25 x 31.5 Y = 14 x 28 x 31.5 1 = 19 x 29 x 31.5 2 = 22 x 37 x 31.5 F = 20 x 40 x 42 H = 24 x 44 x 42 J = 28 x 37 x 42 L = 30 x 45 x 42 M = 30 x 45 x 57.5 N = 35 x 50 x 57.5	J = 5% K = 10%

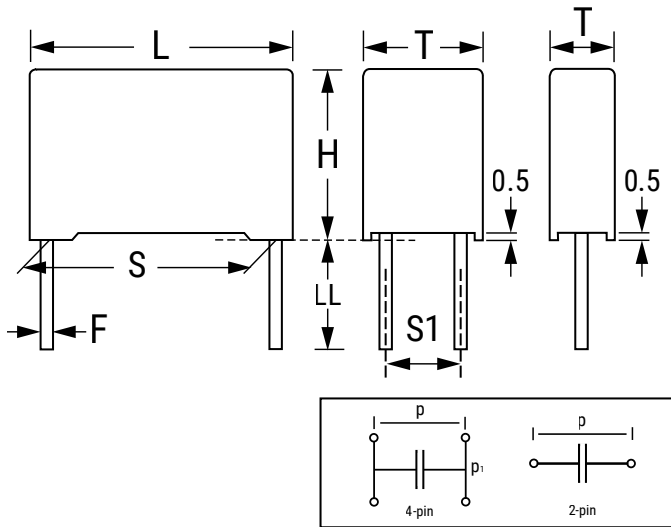
# NOT FOR NEW DESIGN

Power and AC Film Capacitors – Printed Circuit Board Mount Power Film Capacitors

C4AE, Radial, 2 or 4 Leads, 450 – 1,100 VDC, for DC Link

**KEMET**  
a YAGEO company

## Dimensions – Millimeters



Size Code	S		S1		T		H		L		LL		F	
	Nominal	Tolerance	Nominal	Tolerance	Nominal	Tolerance	Nominal	Tolerance	Nominal	Tolerance	Nominal	Tolerance	Nominal	Tolerance
W	27.5	±0.4	-	-	11	+0.3/-0.7	20	+0.2/-0.7	31.5	+0.5/-0.7	6	+0/-2	0.8	±0.05
X	27.5	±0.4	-	-	13	+0.3/-0.7	25	+0.2/-0.7	31.5	+0.5/-0.7	6	+0/-2	0.8	±0.05
Y	27.5	±0.4	-	-	14	+0.3/-0.7	28	+0.2/-0.7	31.5	+0.5/-0.7	6	+0/-2	0.8	±0.05
1	27.5	±0.4	-	-	19	+0.3/-0.7	29	+0.2/-0.7	31.5	+0.5/-0.7	6	+0/-2	0.8	±0.05
2	27.5	±0.4	-	-	22	+0.3/-0.7	37	+0.2/-0.7	31.5	+0.5/-0.7	6	+0/-2	0.8	±0.05
F	37.5	±0.4	5.1/10.2	±0.4	20	+0.4/-0.7	40	+0.2/-0.7	42	+0.6/-0.7	6	+0/-2	1.2	±0.05
H	37.5	±0.4	10.2	±0.4	24	+0.4/-0.7	44	+0.2/-0.7	42	+0.6/-0.7	6	+0/-2	1.2	±0.05
J	37.5	±0.4	10.2	±0.4	28	+0.4/-0.7	37	+0.2/-0.7	42	+0.6/-0.7	6	+0/-2	1.2	±0.05
L	37.5	±0.4	20.3	±0.4	30	+0.4/-0.7	45	+0.2/-0.7	42	+0.6/-0.7	6	+0/-2	1.2	±0.05
M	52.5	±0.4	20.3	±0.4	30	+0.5/-0.7	45	+0.3/-0.7	57.5	+0.6/-0.7	6	+0/-2	1.2	±0.05
N	52.5	±0.4	20.3	±0.4	35	+0.5/-0.7	50	+0.3/-0.7	57.5	+0.6/-0.7	6	+0/-2	1.2	±0.05

## Qualifications

Reference Standards	IEC 61071, EN61071, VDE0560
Climatic Category	40/85/56 according to IEC 60068-1

# NOT FOR NEW DESIGN

Power and AC Film Capacitors – Printed Circuit Board Mount Power Film Capacitors

C4AE, Radial, 2 or 4 Leads, 450 – 1,100 VDC, for DC Link



## General Technical Data

Dielectric	Polypropylene metallized film - non inductive self-healing property
Application	DC filtering/DC-Link
Climatic Category	40/85/56 IEC 60068-1
Maximum Operating Temperature	+105°C
Endurance Test	500 hours + 500 hours at $1.3 \times V_{NDC}$ at 85°C
Standard	IEC 61071 – EN61071 – VDE0560
Protection	Solvent resistant plastic case UL94 V-0 Thermosetting resin sealing UL94 V-0 compliant
Installation	Any position
Leads	Tinned copper wires – standard lead wire length 6 (+0/-2) mm
Packaging	Packed in cardboard trays with protection for the terminals
RoHS Compliant	'Compliant with Directive 2002/95/EC and Directive 2011/65/EU of the European Parliament and of the Council of 8 June 2011, including Commission Delegated Directive (EU) 2015/863 amending Annex II to Directive 2011/65/EU.

## Electrical Characteristics

Rated Capacitance range	1 – 130 $\mu$ F
Rated Voltage (VNDC) range	450 – 1,100 VDC
Capacitance Tolerance	$\pm 5\%$ (J) or $\pm 10\%$ (K) measured at T = +25°C
Dissipation Factor PP typical (tg $\delta$ )	$\leq 0.0002$ at 10 kHz with T = 25°C ( $\pm 5^\circ$ C)
Surge Voltage	$1.5 * V_{NDC}$ for maximum 10 times in life time at 25°C
Overvoltage (IEC 61071)	$1.15 * V_{NDC}$ for maximum 30 minutes, once per day
	$1.3 * V_{NDC}$ for maximum 1 minute, once per day
Peak Non-Repetitive Current	$1.5 * I_{PKR}$ for maximum 1,000 times in life time
Insulation Resistance	$IR \times C \geq 30.000$ seconds at 100 VDC 1 minute (+25°C)
Capacitance deviation in operation	$\pm 1.5\%$ maximum on capacitance value measured at T = +25°C
Temperature Storage	-40 to +80°C
Storage time	$\leq 36$ months from the date marked on the label glued to the package
Permissible Relative Humidity - Storage	Annual average $\leq 70\%$ ; 85% on 30 days/year randomly distributed throughout the year. Dewing not admissible

# NOT FOR NEW DESIGN

Power and AC Film Capacitors – Printed Circuit Board Mount Power Film Capacitors

C4AE, Radial, 2 or 4 Leads, 450 – 1,100 VDC, for DC Link



## Life Expectancy

Life expectancy	100,000 hours at $V_{NDC}$ at Hot spot temperature $T_{HS} = +85^{\circ}\text{C}$
Capacitance drop at end of life	-5% (typical)
Failure rate IEC 61709	$\leq 300$ FIT at $V_{NDC}$ at Hot spot temperature $T_{HS} = +85^{\circ}\text{C}$

## Test Method

Test voltage between terminals	$1.5 * V_{NDC}$ for 10 seconds or $1.65 * V_{NDC}$ for 2 seconds, at $+25^{\circ}\text{C}$
Test voltage between terminals and case	3.2 kVac 50 Hz for 2 seconds
Damp Heat	IEC 60068-2-78
Change of temperature	IEC 60068-2-14

## Operative Voltage Derating

	Voltage (VDC)					Life Expectancy (hrs)
	500	650	800	1,100	1,300	
Operative Voltage at $70^{\circ}\text{C}$ ( $T_{HS}$ )	500	650	800	1,100	1,300	100,000
Rated Voltage at $85^{\circ}\text{C}$ ( $T_{HS}$ )	450	600	700	900	1,100	100,000
Operative Voltage at $105^{\circ}\text{C}$ ( $T_{HS}$ )	350	450	550	700	850	2,000

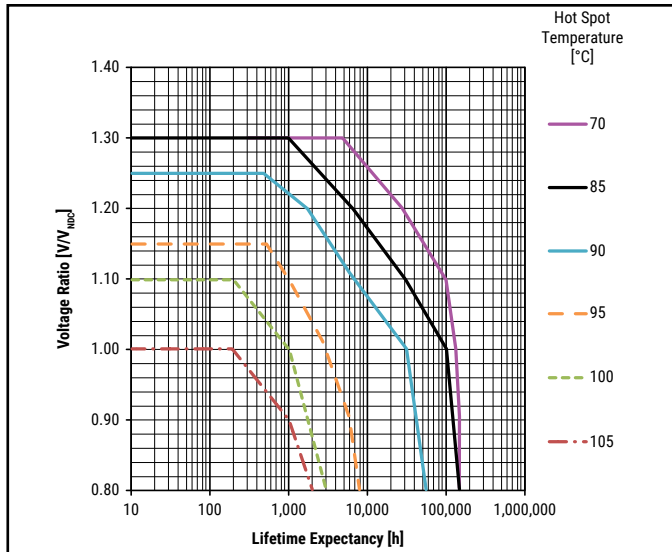
# NOT FOR NEW DESIGN

Power and AC Film Capacitors – Printed Circuit Board Mount Power Film Capacitors  
C4AE, Radial, 2 or 4 Leads, 450 – 1,100 VDC, for DC Link

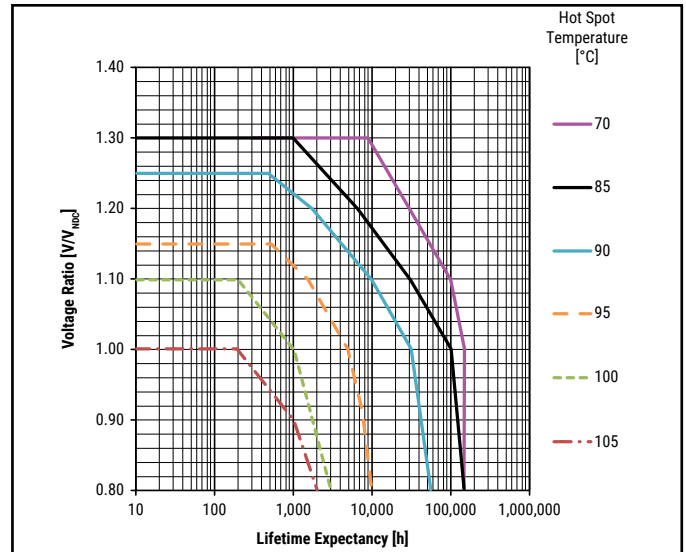
**KEMET**  
a YAGEO company

## Lifetime Expectancy/Failure Quota Graphs

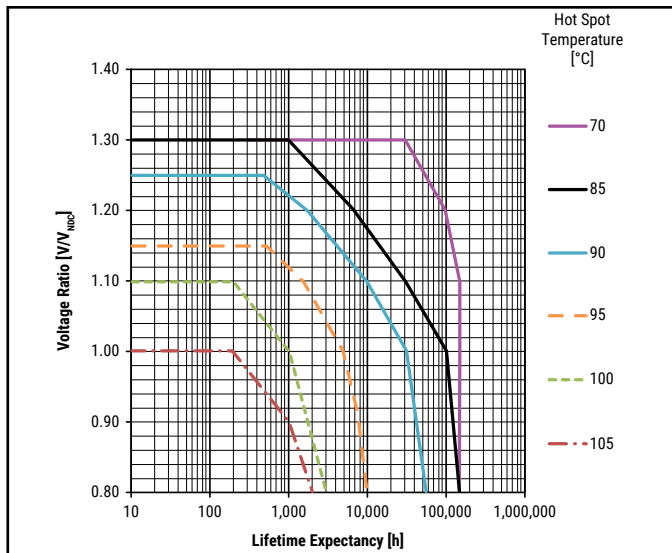
Lifetime Curve  $V_{NDC} = 450\text{ V-}$



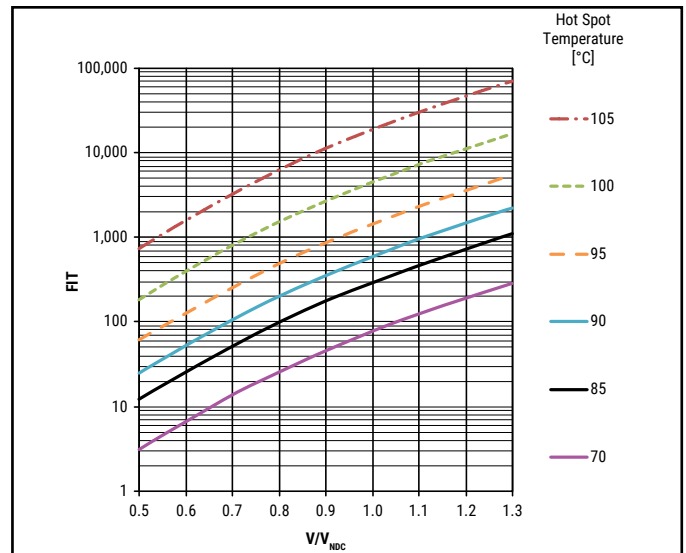
Lifetime Curve  $V_{NDC} = 600\text{ V-}$  and  $V_{NDC} = 700\text{ V-}$



Lifetime Curve  $V_{NDC} = 900\text{ V-}$  and  $V_{NDC} = 1,100\text{ V-}$



## FIT at Hot Spot Temperatures



**Notes:**

$$T_{HS} = T_{AMB} + \Delta T$$

$$\Delta T = ESR * I_{rms}^2 * R_{th}$$

$I_{rms}$  should be limited to values granting  $\Delta T \leq 30^\circ\text{C}$

## Environmental Compliance

As a leading global supplier of electronic components and an environmentally conscious company, KEMET continually aspires to improve the environmental effects of our manufacturing processes and our finished electronic components.

In Europe (RoHS Directive) and in some other geographical areas such as China (China RoHS), legislation has been enacted to prevent or otherwise limit the use of certain hazardous materials, including lead (Pb), in electronic equipment. KEMET monitors legislation globally to ensure compliance and endeavors to adjust our manufacturing processes and/or electronic components as may be required by applicable law.

For military, medical, automotive, and some commercial applications, the use of lead (Pb) in the termination is necessary and/or required by design. KEMET is committed to communicating RoHS compliance to our customers. Information related to RoHS compliance will be provided in data sheets and using specific identifiers on the packaging labels.

All KEMET power film capacitors are RoHS compliant.

---

## Materials & Environment

The selection of raw materials that KEMET uses for the production of its electronic components is the result of extensive experience. KEMET directs specific attention toward environmental protection. KEMET selects its suppliers according to ISO 9001 standards and performs statistical analyses on raw materials before acceptance for use in manufacturing our electronic components. All materials are, to the best of KEMET's knowledge, non-toxic and free from cadmium; mercury; chrome and compounds; polychlorine triphenyl (PCB); bromide and chlorinedioxins bromurate clorurate; CFC and HCFC; and asbestos.

## Dissipation Factor

Dissipation factor is a complex function involved with capacitor inefficiency. The  $\tan\delta$  may vary up and down with increased temperature. For more information, refer to Performance Characteristics.

## Sealing

### Hermetically Sealed Capacitors

As the temperature increases, the pressure inside the capacitor increases. If the internal pressure is high enough, it can cause a breach in the capacitor. Such a breach can result in leakage, impregnation, filling fluid, or moisture susceptibility.

### Barometric Pressure

The altitude at which hermetically sealed capacitors are operated controls the capacitor's voltage rating. As the barometric pressure decreases, the susceptibility to terminal arc-over increases. Non-hermetic capacitors can be affected by internal stresses due to pressure changes. These effects can be in the form of capacitance changes, dielectric arc-over, and/or low insulation resistance. Altitude can also affect heat transfer. Heat that is generated in an operation cannot be dissipated properly, and high  $RI^2$  losses and eventual failure can result.

# NOT FOR NEW DESIGN

Power and AC Film Capacitors – Printed Circuit Board Mount Power Film Capacitors

C4AE, Radial, 2 or 4 Leads, 450 – 1,100 VDC, for DC Link



a YAGEO company

**Table 1 – Ratings & Part Number Reference**

Cap Value (µF)	VDC	Dimensions (mm)					dV/dt (V/µs)	Ipkr	ESL	ESR	Irms*	Rth	PART NUMBER
										70°C at 10 kHz	70°C at 10 kHz	(HS/Amb)	
		mΩ	Arms	(°C/W)									
5.6	450	11	20	31.5	27.5	\	10	54	25	13.1	4.5	44	C4AEGBU4560A1WK
10	450	13	25	31.5	27.5	\	10	96	25	8.1	6.5	36	C4AEGBU5100A1XK
12.5	450	14	28	31.5	27.5	\	10	122	26	6.8	7.5	33	C4AEGBU5125A1YK
15	450	19	29	31.5	27.5	\	10	147	26	6	8.5	29	C4AEGBU5150A11K
25	450	22	37	31.5	27.5	\	10	245	28	4.5	11.5	23	C4AEGBU5250A12K
40	450	20	40	42	37.5	10.2	7	262	30	3.5	13.5	20	C4AEGBW5400A3FK
50	450	28	37	42	37.5	10.2	7	332	30	2.8	16	18	C4AEGBW5500A3JK
55	450	24	44	42	37.5	10.2	9	481	30	2.6	17	17	C4AEGBW5550A3HK
70	450	30	45	42	37.5	20.3	7	464	30	2.1	20.5	15	C4AEGBW5700A3LK
100	450	30	45	57.5	52.5	20.3	4	442	35	3	19	12	C4AEGBW6100A3MK
130	450	35	50	57.5	52.5	20.3	4	581	35	2.4	23	10	C4AEGBW6130A3NK
3.3	600	11	20	31.5	27.5	\	13	41	25	17	4	44	C4AEHBU4330A1WJ
5.6	600	13	25	31.5	27.5	\	13	71	25	10.7	6	36	C4AEHBU4560A1XJ
7	600	14	28	31.5	27.5	\	13	88	26	9	7	33	C4AEHBU4700A1YJ
10	600	19	29	31.5	27.5	\	13	127	26	6.8	8.5	29	C4AEHBU5100A11J
15	600	22	37	31.5	27.5	\	13	190	28	5.3	10.5	23	C4AEHBU5150A12J
20	600	20	40	42	37.5	10.2	9	172	30	5.3	11	20	C4AEHBW5200A3FJ
30	600	28	37	42	37.5	10.2	9	255	30	3.6	14	18	C4AEHBW5300A3JJ
40	600	30	45	42	37.5	20.3	9	344	30	2.8	18	15	C4AEHBW5400A3LJ
55	600	30	45	57.5	52.5	20.3	6	319	35	4.1	16.5	12	C4AEHBW5550A3MJ
75	600	35	50	57.5	52.5	20.3	6	435	35	3.1	20.5	10	C4AEHBW5750A3NJ
2.7	700	11	20	31.5	27.5	\	19	51	25	18.3	4	44	C4AEJBU4270A1WJ
4	700	13	25	31.5	27.5	\	19	77	25	12.9	5.5	36	C4AEJBU4400A1XJ
5	700	14	28	31.5	27.5	\	19	96	26	10.7	6	33	C4AEJBU4500A1YJ
8	700	19	29	31.5	27.5	\	19	154	26	7.3	8	29	C4AEJBU4800A11J
12.5	700	22	37	31.5	27.5	\	19	241	28	5.5	10	23	C4AEJBU5125A12J
15	700	20	40	42	37.5	5.1	13	196	30	6.2	10	20	C4AEJBW5150A3FJ
15	700	20	40	42	37.5	10.2	13	196	30	6.2	10	20	C4AEJBW5150B3FJ
20	700	28	37	42	37.5	10.2	13	262	30	4.7	12.5	18	C4AEJBW5200A3JJ
30	700	30	45	42	37.5	20.3	13	389	30	3.2	16.5	15	C4AEJBW5300A3LJ
45	700	30	45	57.5	52.5	20.3	9	389	35	4.4	16	12	C4AEJBW5450A3MJ
55	700	35	50	57.5	52.5	20.3	9	485	35	3.6	19	10	C4AEJBW5550A3NJ
60	700	35	50	57.5	52.5	20.3	9	530	35	3.4	19.5	10	C4AEJBW5600A3NJ
1.5	900	11	20	31.5	27.5	\	24	36	25	26.3	3.5	44	C4AEQBU4150A1WJ
2.7	900	13	25	31.5	27.5	\	24	65	25	15.3	5	36	C4AEQBU4270A1XJ
3.3	900	14	28	31.5	27.5	\	24	79	26	12.9	5.5	33	C4AEQBU4330A1YJ
5	900	19	29	31.5	27.5	\	24	120	26	9.1	7	29	C4AEQBU4500A11J
8	900	22	37	31.5	27.5	\	24	193	28	6.6	9.5	23	C4AEQBU4800A12J
12	900	20	40	42	37.5	10.2	16	190	30	6.3	10	20	C4AEQBW5120A3FJ
14	900	28	37	42	37.5	10.2	16	229	30	5.4	11.5	18	C4AEQBW5140A3JJ
20	900	30	45	42	37.5	20.3	16	321	30	3.9	15	15	C4AEQBW5200A3LJ
30	900	30	45	57.5	52.5	20.3	11	324	35	5.2	15	12	C4AEQBW5300A3MJ
40	900	35	50	57.5	52.5	20.3	11	428	35	4	18	10	C4AEQBW5400A3NJ
1	1100	11	20	31.5	27.5	\	28	28	25	33.1	3	44	C4AEQBU4100A1WJ
1.8	1100	13	25	31.5	27.5	\	29	52	25	19.1	4.5	36	C4AEQBU4180A1XJ
2.2	1100	14	28	31.5	27.5	\	29	63	26	16	5	33	C4AEQBU4220A1YJ
3.3	1100	19	29	31.5	27.5	\	29	95	26	11.2	6.5	29	C4AEQBU4330A11J
5	1100	22	37	31.5	27.5	\	29	145	28	8.2	8.5	23	C4AEQBU4500A12J
8	1100	20	40	42	37.5	10.2	20	157	30	7.9	9	20	C4AEQBW4800A3FJ
10	1100	28	37	42	37.5	10.2	20	196	30	6.3	11	18	C4AEQBW5100A3JJ
12	1100	30	45	42	37.5	20.3	20	235	30	5.3	13	15	C4AEQBW5120A3LJ
20	1100	30	45	57.5	52.5	20.3	13	262	35	6.5	13	12	C4AEQBW5200A3MJ
25	1100	35	50	57.5	52.5	20.3	13	331	35	5.2	16	10	C4AEQBW5250A3NJ
27	1100	35	50	57.5	52.5	20.3	13	354	35	4.9	16.5	10	C4AEQBW5270A3NJ

(\*) Current value that leads to a ΔT of ~ 15°C in the Hot spot →  $T_{HS} = T_{AMB} + \Delta T = 70^\circ C + 15^\circ C = 85^\circ C$   
 For Packaging quantities not listed contact KEMET

## Soldering Process

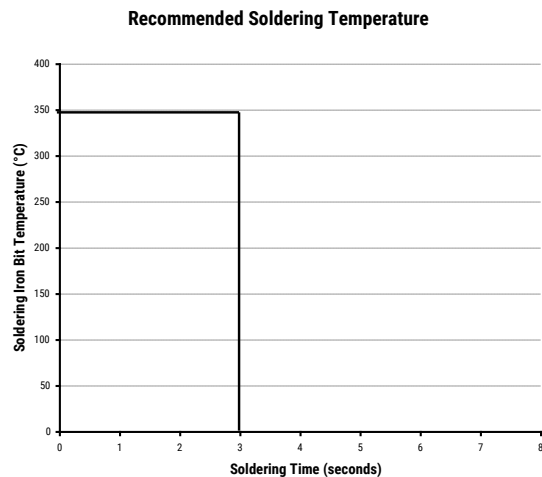
The implementation of the RoHS directive has resulted in the selection of SnAuCu (SAC) alloys, or SnCu alloys, as the primary solder material. This has increased the liquidus temperature from 183°C for a SnPb eutectic alloy to 217 – 221°C for new alloys. As a result, the heat stress to the components, even in wave soldering, has increased considerably due to higher pre-heat and wave temperatures. Polypropylene capacitors are especially sensitive to heat (the melting point of polypropylene is 160 – 170°C). Wave soldering can be destructive, especially for mechanically small polypropylene capacitors (with lead spacing of 5 – 15 mm), and great care must be taken during soldering. The recommended solder profiles from KEMET should be used. Contact KEMET with any questions. In general, the wave soldering curve from IEC Publication 61760-1 Edition 2 serves as a solid guideline for successful soldering. See Figure 1.

Reflow soldering is not recommended for through-hole film capacitors. Exposing capacitors to a soldering profile in excess of the recommended limits may result in degradation or permanent damage to the capacitors.

Do not place the polypropylene capacitor through an adhesive curing oven to cure resin for surface mount components. Insert through-hole parts after curing the surface mount parts. Contact KEMET to discuss the actual temperature profile in the oven, if through-hole components must pass through the adhesive curing process. A maximum two soldering cycles is recommended. Allow time for the capacitor surface temperature to return to normal before the second soldering cycle.

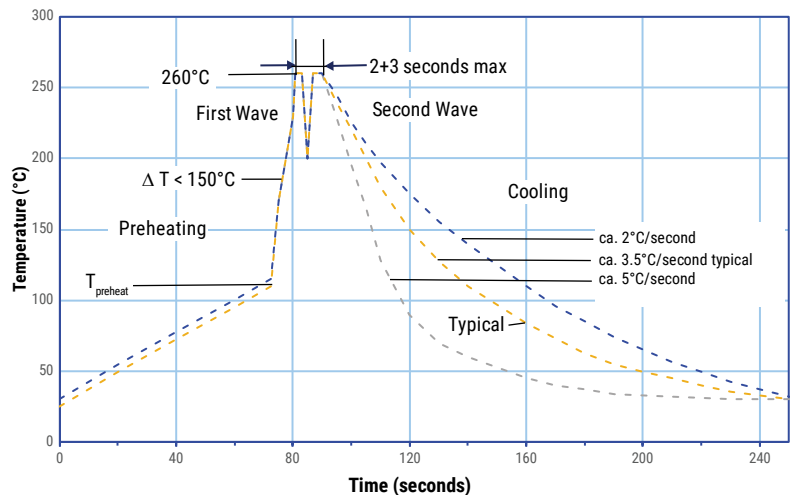
### Manual Soldering Recommendations

Following is the recommendation for manual soldering with a soldering iron.



The soldering iron tip temperature should be set at 350°C (+10°C) maximum with the soldering duration not to exceed more than 3 seconds.

### Wave Soldering Recommendations



## Soldering Process cont.

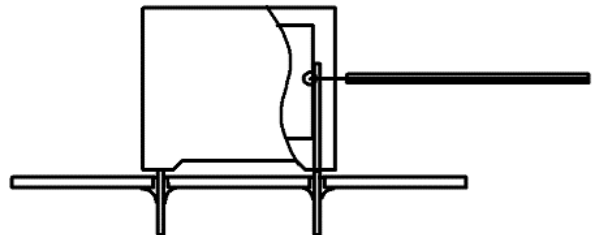
### Wave Soldering Recommendations cont.

1. The tables indicates the maximum set-up temperature of the soldering process

Dielectric Film Material	Maximum Preheat Temperature		Maximum Peak Soldering Temperature	
	Capacitor Pitch ≤ 15 mm	Capacitor Pitch > 15 mm	Capacitor Pitch ≤ 15 mm	Capacitor Pitch > 15 mm
Polyester	130°C	130°C	270°C	270°C
Polypropylene	110°C	130°C	260°C	270°C
Paper	130°C	140°C	270°C	270°C
Polyphenylene Sulphide	150°C	160°C	270°C	270°C

2. The maximum temperature measured inside the capacitor: set the temperature so that inside the element the maximum temperature is below the limit.

Dielectric Film Material	Maximum Temperature Measured Inside the Element
Polyester	160°C
Polypropylene	110°C
Paper	160°C
Polyphenylene Sulphide	160°C



Temperature monitored inside the capacitor.

### Selective Soldering Recommendations

Selective dip soldering is a variation of reflow soldering. In this method, the printed circuit board with through-hole components to be soldered is pre-heated and transported over the solder bath, as in normal flow soldering, without touching the solder. When the board is over the bath, it is stopped. Pre-designed solder pots are lifted from the bath with molten solder, only at the places of the selected components, and pressed against the lower surface of the board to solder the components.

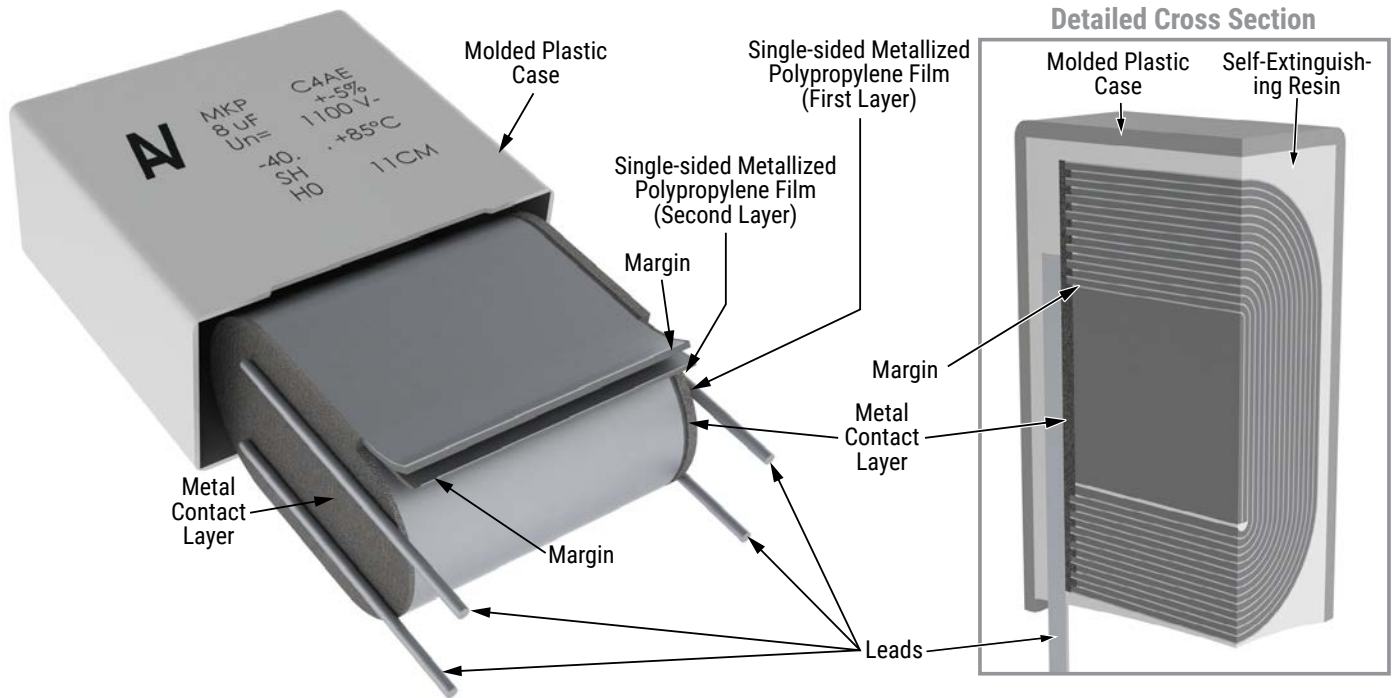
The temperature profile for selective soldering is similar to the double wave flow soldering outlined in this document. However, instead of two baths, there is only one with a time from 3 – 10 seconds. In selective soldering, the risk of overheating is greater than in double wave flow soldering, and great care must be taken so that the parts do not overheat.

# NOT FOR NEW DESIGN

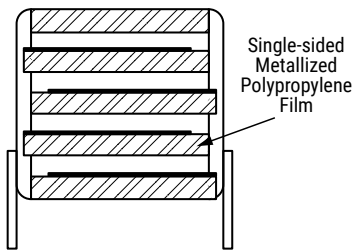
Power and AC Film Capacitors – Printed Circuit Board Mount Power Film Capacitors  
C4AE, Radial, 2 or 4 Leads, 450 – 1,100 VDC, for DC Link



## Construction



## Winding Scheme

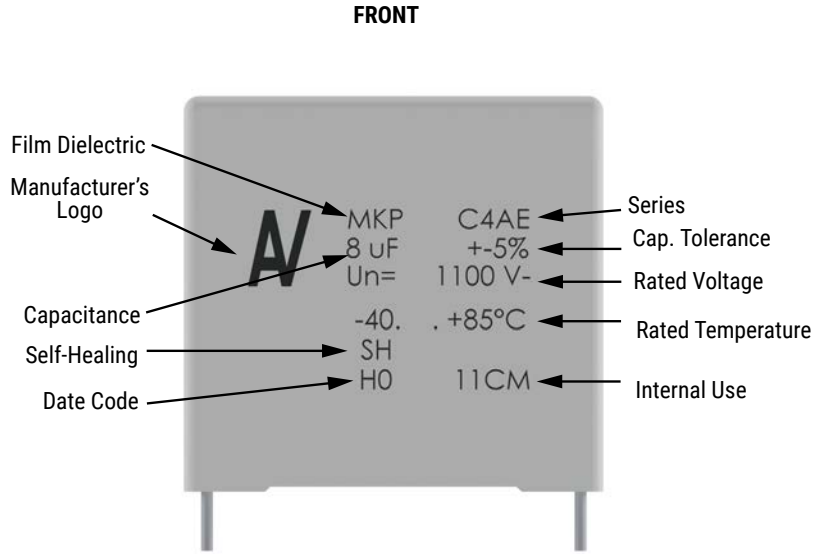


# NOT FOR NEW DESIGN

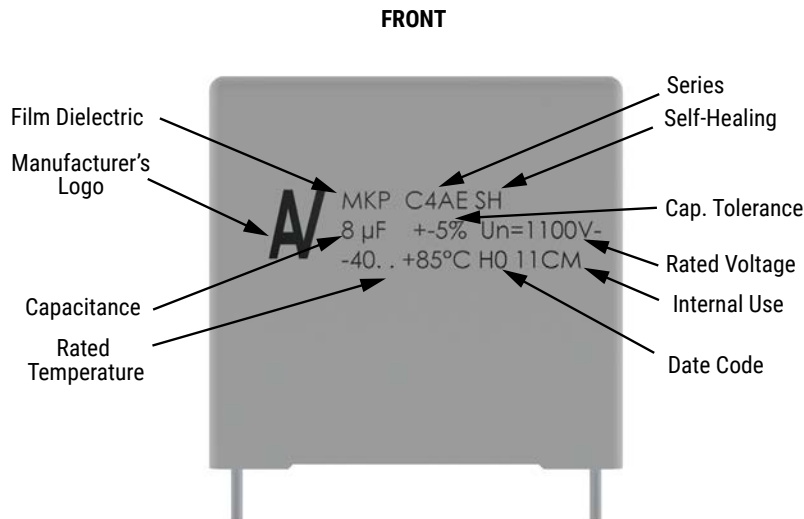
Power and AC Film Capacitors – Printed Circuit Board Mount Power Film Capacitors  
C4AE, Radial, 2 or 4 Leads, 450 – 1,100 VDC, for DC Link



## Marking



**OR**



\*Marking layout depends on the production line

Slight change in the layout can be possible but this does not affect the content of the information of the current marking.

This change will be achieved without impact to product form, fit or function, as the products are equivalent with respect to physical, mechanical, quality and reliability characteristics.

Manufacturing Date Code (IEC 60062)									
Year	Code	Year	Code	Year	Code	Month	Code	Month	Code
2020	M	2027	V	2034	E	January	1	July	7
2021	N	2028	W	2035	F	February	2	August	8
2022	P	2029	X	2036	G	March	3	September	9
2023	R	2030	A	2037	H	April	4	October	0
2024	S	2031	B	2038	K	May	5	November	N
2025	T	2032	C	2039	L	June	6	December	D
2026	U	2033	D	2040	M				

# NOT FOR NEW DESIGN

Power and AC Film Capacitors – Printed Circuit Board Mount Power Film Capacitors  
C4AE, Radial, 2 or 4 Leads, 450 – 1,100 VDC, for DC Link



## KEMET Electronics Corporation Sales Offices

For a complete list of our global sales offices, please visit [www.kemet.com/sales](http://www.kemet.com/sales).

---

## Disclaimer

YAGEO Corporation and its affiliates do not recommend the use of commercial or automotive grade products for high reliability applications or manned space flight.

All product specifications, statements, information and data (collectively, the "Information") in this datasheet are subject to change. The customer is responsible for checking and verifying the extent to which the Information contained in this publication is applicable to an order at the time the order is placed. All Information given herein is believed to be accurate and reliable, but it is presented without guarantee, warranty, or responsibility of any kind, expressed or implied.

Statements of suitability for certain applications are based on KEMET Electronics Corporation's ("KEMET") knowledge of typical operating conditions for such applications, but are not intended to constitute – and KEMET specifically disclaims – any warranty concerning suitability for a specific customer application or use. The Information is intended for use only by customers who have the requisite experience and capability to determine the correct products for their application. Any technical advice inferred from this Information or otherwise provided by KEMET with reference to the use of KEMET's products is given gratis, and KEMET assumes no obligation or liability for the advice given or results obtained.

Although KEMET designs and manufactures its products to the most stringent quality and safety standards, given the current state of the art, isolated component failures may still occur. Accordingly, customer applications which require a high degree of reliability or safety should employ suitable designs or other safeguards (such as installation of protective circuitry or redundancies) in order to ensure that the failure of an electrical component does not result in a risk of personal injury or property damage.

Although all product-related warnings, cautions and notes must be observed, the customer should not assume that all safety measures are indicated or that other measures may not be required.

Additional information about production site flexibility can be found [here](#)

*KEMET is a registered trademark of KEMET Electronics Corporation.*

## Looking for pricing, stock, or lifecycle information?

Click below to explore more details on WIN SOURCE:

 [View C4AEJBW5550A3NJ on WIN SOURCE](#)

 [Kemet Information](#)

## Optimize Your Supply Chain with WIN SOURCE Solutions

-  Global Sourcing Solution
-  Obsolete Management
-  Cost Control Management
-  Shortage Management
-  Alternative Solution
-  Excess Inventory Management