

ON Semiconductor

Is Now

onsemi™

To learn more about onsemi™, please visit our website at
www.onsemi.com

onsemi and **onsemi** and other names, marks, and brands are registered and/or common law trademarks of Semiconductor Components Industries, LLC dba "**onsemi**" or its affiliates and/or subsidiaries in the United States and/or other countries. **onsemi** owns the rights to a number of patents, trademarks, copyrights, trade secrets, and other intellectual property. A listing of **onsemi** product/patent coverage may be accessed at www.onsemi.com/site/pdf/Patent-Marking.pdf. **onsemi** reserves the right to make changes at any time to any products or information herein, without notice. The information herein is provided "as-is" and **onsemi** makes no warranty, representation or guarantee regarding the accuracy of the information, product features, availability, functionality, or suitability of its products for any particular purpose, nor does **onsemi** assume any liability arising out of the application or use of any product or circuit, and specifically disclaims any and all liability, including without limitation special, consequential or incidental damages. Buyer is responsible for its products and applications using **onsemi** products, including compliance with all laws, regulations and safety requirements or standards, regardless of any support or applications information provided by **onsemi**. "Typical" parameters which may be provided in **onsemi** data sheets and/or specifications can and do vary in different applications and actual performance may vary over time. All operating parameters, including "Typicals" must be validated for each customer application by customer's technical experts. **onsemi** does not convey any license under any of its intellectual property rights nor the rights of others. **onsemi** products are not designed, intended, or authorized for use as a critical component in life support systems or any FDA Class 3 medical devices or medical devices with a same or similar classification in a foreign jurisdiction or any devices intended for implantation in the human body. Should Buyer purchase or use **onsemi** products for any such unintended or unauthorized application, Buyer shall indemnify and hold **onsemi** and its officers, employees, subsidiaries, affiliates, and distributors harmless against all claims, costs, damages, and expenses, and reasonable attorney fees arising out of, directly or indirectly, any claim of personal injury or death associated with such unintended or unauthorized use, even if such claim alleges that **onsemi** was negligent regarding the design or manufacture of the part. **onsemi** is an Equal Opportunity/Affirmative Action Employer. This literature is subject to all applicable copyright laws and is not for resale in any manner. Other names and brands may be claimed as the property of others.

MR2502, MR2504, MR2510

MR2504 and MR2510 are Preferred Devices

Medium-Current Silicon Rectifiers

... compact, highly efficient silicon rectifiers for medium-current applications requiring:

- High Current Surge — 400 Amperes @ $T_J = 175^\circ\text{C}$
- Peak Performance @ Elevated Temperature — 25 Amperes @ $T_C = 150^\circ\text{C}$
- Low Cost
- Compact, Molded Package — For Optimum Efficiency in a Small Case Configuration

Mechanical Characteristics:

- Case: Epoxy, Molded
- Weight: 1.8 grams (approximately)
- Finish: All External Surfaces Corrosion Resistant and Terminals are Readily Solderable
- Lead Temperature for Soldering Purposes: requires a custom temperature soldering profile
- Polarity: Cathode Polarity Band
- Shipped 5000 units per box

MAXIMUM RATINGS

Please See the Table on the Following Page



ON Semiconductor™

<http://onsemi.com>

**MEDIUM-CURRENT
SILICON RECTIFIERS
25 AMPERES
200-1000 VOLTS
DIFFUSED JUNCTION**



**MICRODE BUTTON
CASE 193**

MARKING DIAGRAM



MR25xx = Device Code
xx = 02, 04 or 10
L = Location Code
YY = Year
WW = Work Week

ORDERING INFORMATION

Device	Package	Shipping
MR2502	Microde Button	5000 Units/Box
MR2504	Microde Button	5000 Units/Box
MR2510	Microde Button	5000 Units/Box

Preferred devices are recommended choices for future use and best overall value.

MR2502, MR2504, MR2510

MAXIMUM RATINGS

Characteristic	Symbol	MR2502	MR2504	MR2510	Unit
Peak Repetitive Reverse Voltage Working Peak Reverse Voltage DC Blocking Voltage	V_{RRM} V_{RWM} V_R	200	400	1000	Volts
Non-Repetitive Peak Reverse Voltage (Halfwave, single phase, 60 Hz peak)	V_{RSM}	240	480	1200	Volts
Average Rectified Forward Current (Single phase, resistive load, 60 Hz, $T_C = 150^\circ\text{C}$)	I_O	25			Amps
Non-Repetitive Peak Surge Current (Surge applied at rated load conditions, halfwave, single phase, 60 Hz)	I_{FSM}	400 (for 1 cycle)			Amps
Operating and Storage Junction Temperature Range	T_J, T_{stg}	- 65 to +175			$^\circ\text{C}$

THERMAL CHARACTERISTICS

Characteristic	Symbol	Max	Unit
Thermal Resistance, Junction to Case (Single Side Cooled)	$R_{\theta JC}$	1.0	$^\circ\text{C}/\text{W}$

ELECTRICAL CHARACTERISTICS

Characteristics and Conditions	Symbol	Max	Unit
Maximum Instantaneous Forward Voltage ($i_F = 78.5$ Amps, $T_C = 25^\circ\text{C}$)	v_F	1.18	Volts
Maximum Reverse Current (rated dc voltage) $T_C = 25^\circ\text{C}$ $T_C = 100^\circ\text{C}$	I_R	100 500	μA

MR2502, MR2504, MR2510

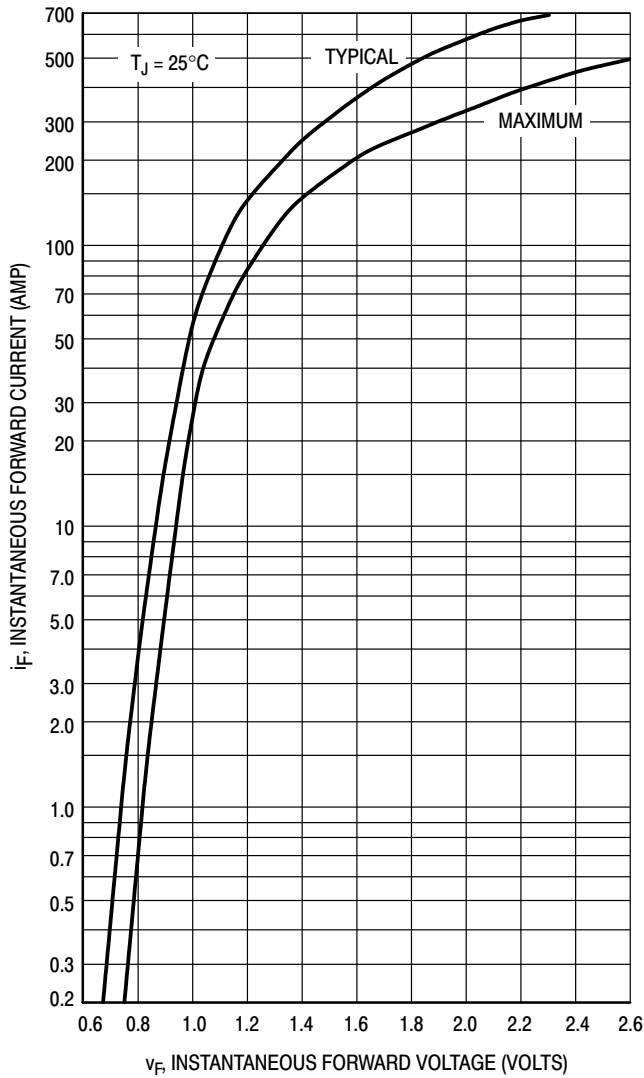


Figure 1. Forward Voltage

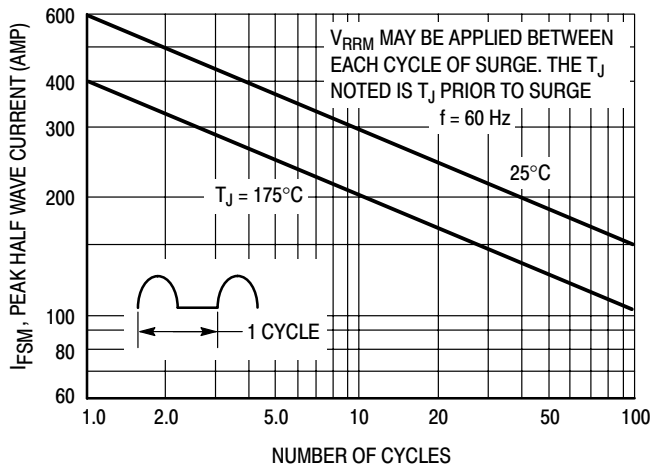


Figure 2. Non-Repetitive Surge Current

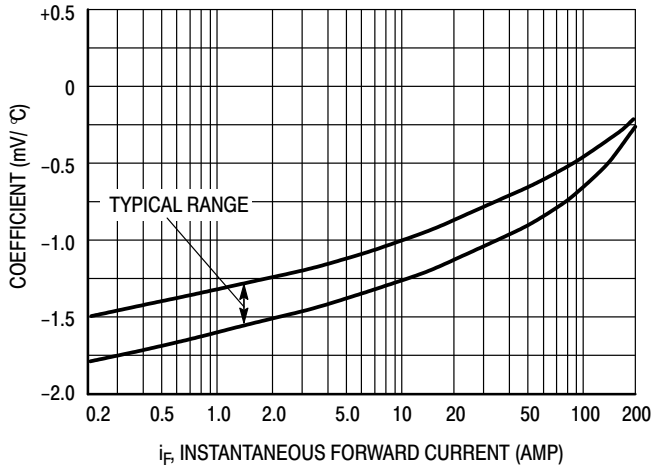


Figure 3. Forward Voltage Temperature Coefficient

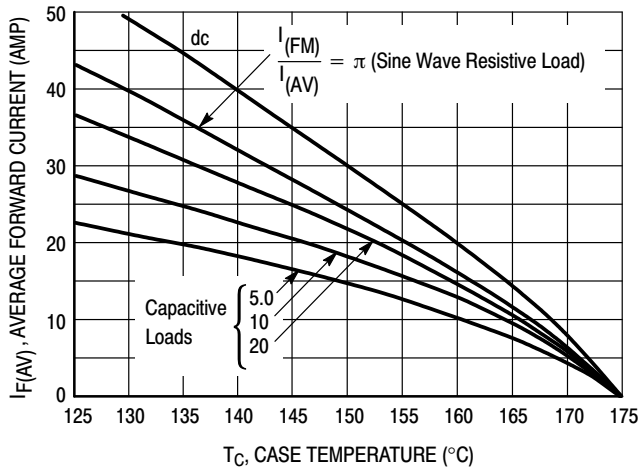


Figure 4. Current Derating

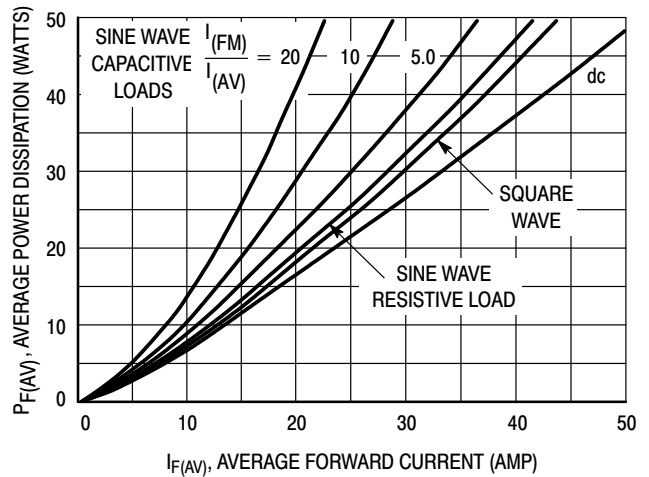


Figure 5. Forward Power Dissipation

MR2502, MR2504, MR2510

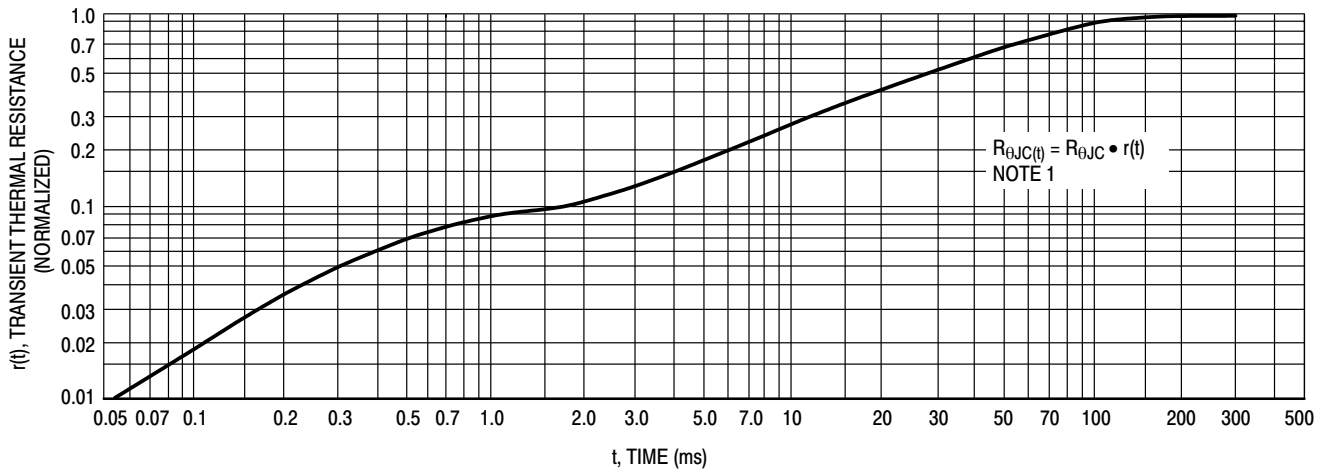


Figure 6. Thermal Response

DUTY CYCLE, $D = t_p/t_1$
PEAK POWER, P_{pk} , is peak of an equivalent square power pulse.

To determine maximum junction temperature of the diode in a given situation, the following procedure is recommended:
The temperature of the case should be measured using a thermocouple placed on the case at the temperature reference point (see the outline drawing on page 1). The thermal mass connected to the case is normally large enough so that it will not significantly respond to heat surges generated in the diode as a result of pulsed operation once steady-state conditions are achieved. Using the measured value of T_C , the junction temperature may be determined by:

$$T_J = T_C + \Delta T_{JC}$$

where ΔT_{JC} is the increase in junction temperature above the case temperature, it may be determined by:
 $\Delta T_{JC} = P_{pk} \cdot R_{\theta JC} [D + (1 - D) \cdot r(t_1 + t_p) + r(t_p) - r(t_1)]$ where
 $r(t)$ = normalized value of transient thermal resistance at time, t , from Figure 6, i.e.:
 $r(t_1 + t_p)$ = normalized value of transient thermal resistance at time $t_1 + t_p$.

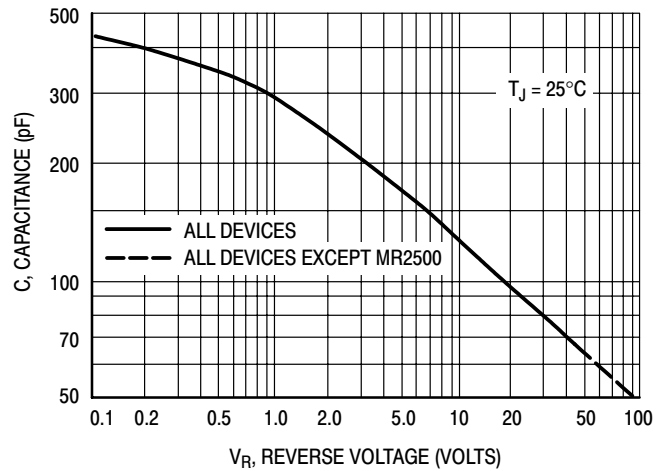


Figure 7. Capacitance

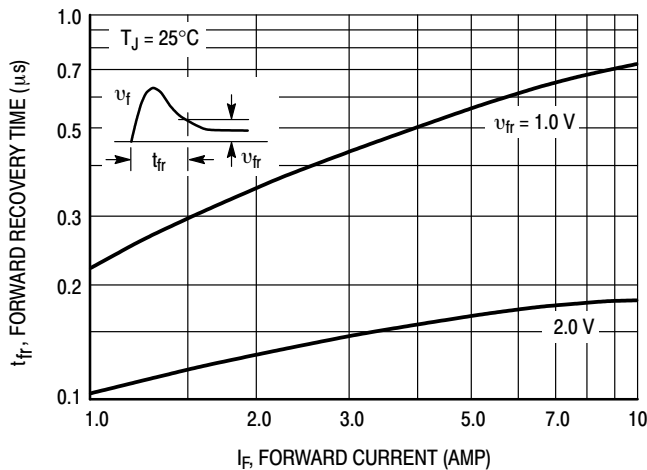


Figure 8. Forward Recovery Time

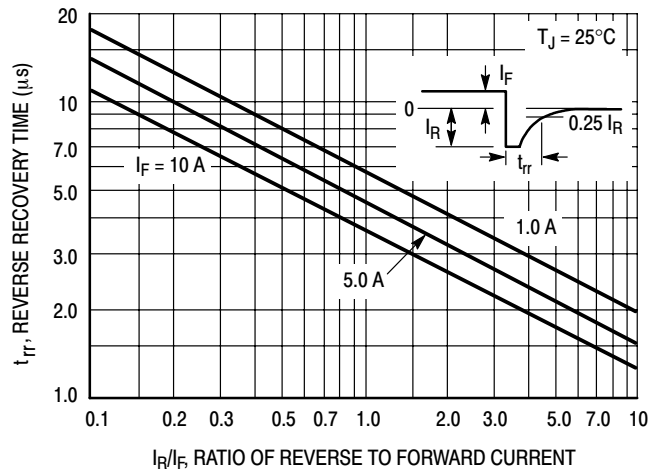


Figure 9. Reverse Recovery Time

MR2502, MR2504, MR2510

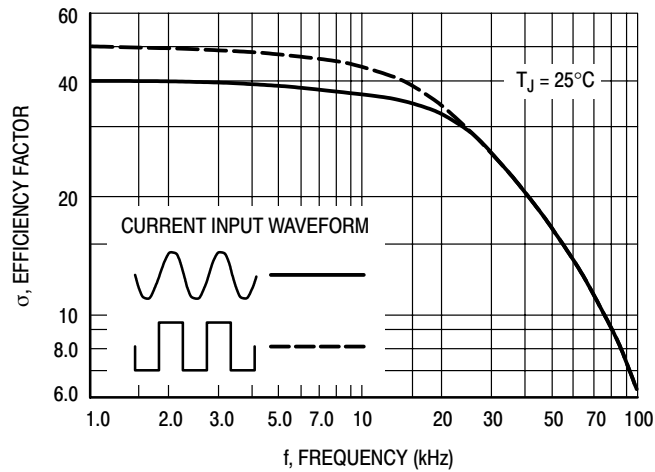


Figure 10. Rectification Waveform Efficiency

RECTIFICATION EFFICIENCY NOTE

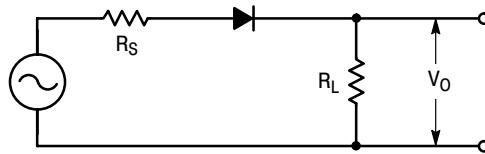


Figure 11. Single-Phase Half-Wave Rectifier Circuit

The rectification efficiency factor σ shown in Figure 10 was calculated using the formula:

$$\sigma = \frac{P_{(dc)}}{P_{(rms)}} = \frac{\frac{V_{2o(dc)}}{R_L}}{\frac{V_{2o(rms)}}{R_L}} \cdot 100\% = \frac{V_{2o(dc)}}{V_{2o(ac)} + V_{2o(dc)}} \cdot 100\% \quad (1)$$

For a sine wave input $V_m \sin(\omega t)$ to the diode, assume lossless, the maximum theoretical efficiency factor becomes:

$$\sigma_{(sine)} = \frac{\frac{V_m^2}{\pi^2 R_L}}{\frac{V_m^2}{4R_L}} \cdot 100\% = \frac{4}{\pi^2} \cdot 100\% = 40.6\% \quad (2)$$

For a square wave input of amplitude V_m , the efficiency factor becomes:

$$\sigma_{(square)} = \frac{\frac{V_m^2}{2R_L}}{\frac{V_m^2}{R_L}} \cdot 100\% = 50\% \quad (3)$$

(A full wave circuit has twice these efficiencies)

As the frequency of the input signal is increased, the reverse recovery time of the diode (Figure 9) becomes significant, resulting in an increasing ac voltage component across R_L which is opposite in polarity to the forward current, thereby reducing the value of the efficiency factor σ , as shown on Figure 10.

It should be emphasized that Figure 10 shows waveform efficiency only; it does not provide a measure of diode losses. Data was obtained by measuring the ac component of V_O with a true rms ac voltmeter and the dc component with a dc voltmeter. The data was used in Equation 1 to obtain points for Figure 10.

ASSEMBLY AND SOLDERING INFORMATION

There are *two basic areas* of consideration for successful implementation of button rectifiers:

1. Mounting and Handling
2. Soldering

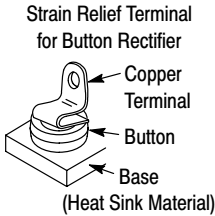
each should be carefully examined before attempting a finished assembly or mounting operation.

MOUNTING AND HANDLING

The button rectifier lends itself to a multitude of assembly arrangements but one key consideration must *always* be included:

One Side of the Connections to the Button Must Be Flexible!

This stress relief to the button should also be chosen for maximum contact area to afford the best heat transfer — but not at the expense of flexibility. For an annealed copper terminal a thickness of 0.015" is suggested.



The base heat sink may be of various materials whose shape and size are a function of the individual application and the heat transfer requirements.

Common Materials

Advantages and Disadvantages

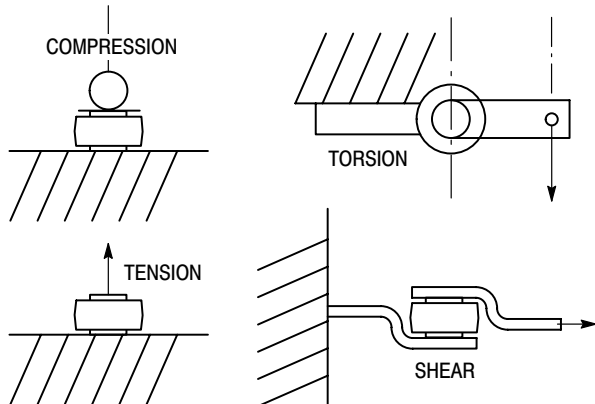
Steel	Low Cost; relatively low heat conductivity
Copper	High Cost; high heat conductivity
Aluminum	Medium Cost; medium heat conductivity
	Relatively expensive to plate and not all platers can process aluminum.

Handling of the button during assembly must be relatively gentle to minimize sharp impact shocks and avoid nicking of the plastic. Improperly designed automatic handling equipment is the worst source of unnecessary shocks. Techniques for vacuum handling and spring loading should be investigated.

The mechanical stress limits for the button diode are as follows:

Compression	32 lbs.	142.3 Newton
Tension	32 lbs.	142.3 Newton
Torsion	6-inch lbs.	0.68 Newton-meters
Shear	55 lbs.	244.7 Newton

MECHANICAL STRESS



Exceeding these recommended maximums can result in electrical degradation of the device.

SOLDERING

The button rectifier is basically a semiconductor chip bonded between two nickel-plated copper heat sinks with an encapsulating material of thermal-setting silicone. The exposed metal areas are also tin plated to enhance solderability.

In the soldering process it is important that the temperature not exceed 250°C if device damage is to be avoided. Various solder alloys can be used for this operation but two types are recommended for best results:

1. 95% Sn, 5% Sb; melting point 237°C
2. 96.5% tin, 3.5% silver; melting point 221°C
3. 63% tin, 37% lead; melting point 183°C

Solder is available as preforms or paste. The paste contains both the metal and flux and can be dispensed rapidly. The solder preform requires the application of a flux to assure good wetting of the solder. The type of flux used depends upon the degree of cleaning to be accomplished and is a function of the metals involved. These fluxes range from a mild rosin to a strong acid; e.g., Nickel plating oxides are best removed by an acid base flux while an activated rosin flux may be sufficient for tin plated parts.

Since the button is relatively light-weight, there is a tendency for it to float when the solder becomes liquid. To prevent bad joints and misalignment it is suggested that a weighting or spring loaded fixture be employed. It is also important that severe thermal shock (either heating or cooling) be avoided as it may lead to damage of the die or encapsulant of the part.

Button holding fixtures for use during soldering may be of various materials. Stainless steel has a longer use life while black anodized aluminum is less expensive and will limit heat reflection and enhance absorption. The assembly volume will influence the choice of materials. Fixture dimension tolerances for locating the button must allow for expansion during soldering as well as allowing for button clearance.

HEATING TECHNIQUES

The following four heating methods have their advantages and disadvantages depending on volume of buttons to be soldered.

1. **Belt Furnaces** readily handle large or small volumes and are adaptable to establishment of "on-line" assembly since a variable belt speed sets the run rate. Individual furnace zone controls make excellent temperature control possible.
2. **Flame Soldering** involves the directing of natural gas flame jets at the base of a heatsink as the heatsink is indexed to various loading-heating-cooling-unloading positions. This is the most economical labor method of soldering large volumes. Flame soldering offers good temperature control but requires sophisticated temperature monitoring systems such as infrared.

ASSEMBLY AND SOLDERING INFORMATION (continued)

3. **Ovens** are good for batch soldering and are production limited. There are handling problems because of slow cooling. Response time is load dependent, being a function of the watt rating of the oven and the mass of parts. Large ovens may not give an acceptable temperature gradient. Capital cost is low compared to belt furnaces and flame soldering.
4. **Hot Plates** are good for soldering small quantities of prototype devices. Temperature control is fair with overshoot common because of the exposed heating surface. Solder flow and positioning can be corrected during soldering since the assembly is exposed. Investment cost is very low.

Regardless of the heating method used, a soldering profile giving the time-temperature relationship of the particular method must be determined to assure proper soldering. Profiling must be performed on a scheduled basis to minimize poor soldering. The time-temperature relationship will change depending on the heating method used.

SOLDER PROCESS EVALUATION

Characteristics to look for when setting up the soldering process:

I Overtemperature is indicated by any one or all three of the following observations.

1. Remelting of the solder inside the button rectifier shows the temperature has exceeded 285°C and is noted by “islands” of shiny solder and solder dewetting when a unit is broken apart.
2. Cracked die inside the button may be observed by a moving reverse oscilloscope trace when pressure is applied to the unit.
3. Cracked plastic may be caused by thermal shock as well as overtemperature so cooling rate should also be checked.

II Cold soldering gives a grainy appearance and solder build-up without a smooth continuous solder fillet. The temperature must be adjusted until the proper solder fillet is obtained within the maximum temperature limits.

III Incomplete solder fillets result from insufficient solder or parts not making proper contact.

IV Tilted buttons can cause a void in the solder between the heatsink and button rectifier which will result in poor heat transfer during operation. An eight degree tilt is a suggested maximum value.

V Plating problems require a knowledge of plating operations for complete understanding of observed deficiencies.

1. Peeling or plating separation is generally seen when a button is broken away for solder inspection. If heatsink or terminal base metal is present the plating is poor and must be corrected.
2. Thin plating allows the solder to penetrate through to the base metal and can give a poor connection. A suggested minimum plating thickness is 300 microinches.
3. Contaminated soldering surfaces may out-gas and cause non-wetting resulting in voids in the solder connection. The exact cause is not always readily apparent and can be because of:
 - (a) improper plating
 - (b) mishandling of parts
 - (c) improper and/or excessive storage time

SOLDER PROCESS MONITORING

Continuous monitoring of the soldering process must be established to minimize potential problems. All parts used in the soldering operation should be sampled on a lot by lot basis by assembly of a controlled sample. Evaluate the control sample by break-apart tests to view the solder connections, by physical strength tests and by dimensional characteristics for part mating.

A shear test is a suggested way of testing the solder bond strength.

POST SOLDERING OPERATION CONSIDERATIONS

After soldering, the completed assembly must be unloaded, washed and inspected.

Unloading must be done carefully to avoid unnecessary stress. Assembly fixtures should be cooled to room temperature so solder profiles are not affected.

Washing is mandatory if an acid flux is used because of its ionic and corrosive nature. Wash the assemblies in agitated hot water and detergent for three to five minutes. After washing; rinse, blow off excessive water and bake 30 minutes at 150°C to remove trapped moisture.

Inspection should be both electrical and physical. Any rejects can be reworked as required.

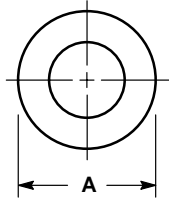
SUMMARY

The Button Rectifier is an excellent building block for specialized applications. The prime example of its use is the output bridge of the automotive alternator where millions are used each year. Although the material presented here is not all inclusive, primary considerations for use are presented. For further information, contact the nearest ON Semiconductor Sales Office or franchised distributor.

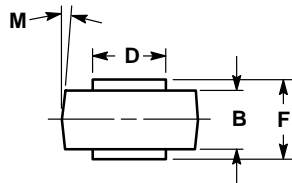
MR2502, MR2504, MR2510


PACKAGE DIMENSIONS

MICRODE BUTTON CASE 193-04 ISSUE J



DIM	MILLIMETERS		INCHES	
	MIN	MAX	MIN	MAX
A	8.43	8.69	0.332	0.342
B	4.19	4.45	0.165	0.175
D	5.54	5.64	0.218	0.222
F	5.94	6.25	0.234	0.246
M	5°NOM		5°NOM	



ON Semiconductor and  are trademarks of Semiconductor Components Industries, LLC (SCILLC). SCILLC reserves the right to make changes without further notice to any products herein. SCILLC makes no warranty, representation or guarantee regarding the suitability of its products for any particular purpose, nor does SCILLC assume any liability arising out of the application or use of any product or circuit, and specifically disclaims any and all liability, including without limitation special, consequential or incidental damages. "Typical" parameters which may be provided in SCILLC data sheets and/or specifications can and do vary in different applications and actual performance may vary over time. All operating parameters, including "Typicals" must be validated for each customer application by customer's technical experts. SCILLC does not convey any license under its patent rights nor the rights of others. SCILLC products are not designed, intended, or authorized for use as components in systems intended for surgical implant into the body, or other applications intended to support or sustain life, or for any other application in which the failure of the SCILLC product could create a situation where personal injury or death may occur. Should Buyer purchase or use SCILLC products for any such unintended or unauthorized application, Buyer shall indemnify and hold SCILLC and its officers, employees, subsidiaries, affiliates, and distributors harmless against all claims, costs, damages, and expenses, and reasonable attorney fees arising out of, directly or indirectly, any claim of personal injury or death associated with such unintended or unauthorized use, even if such claim alleges that SCILLC was negligent regarding the design or manufacture of the part. SCILLC is an Equal Opportunity/Affirmative Action Employer.

PUBLICATION ORDERING INFORMATION

NORTH AMERICA Literature Fulfillment:

Literature Distribution Center for ON Semiconductor
P.O. Box 5163, Denver, Colorado 80217 USA
Phone: 303-675-2175 or 800-344-3860 Toll Free USA/Canada
Fax: 303-675-2176 or 800-344-3867 Toll Free USA/Canada
Email: ONlit@hibbertco.com
Fax Response Line: 303-675-2167 or 800-344-3810 Toll Free USA/Canada

N. American Technical Support: 800-282-9855 Toll Free USA/Canada

EUROPE: LDC for ON Semiconductor – European Support

German Phone: (+1) 303-308-7140 (Mon-Fri 2:30pm to 7:00pm CET)
Email: ONlit-german@hibbertco.com
French Phone: (+1) 303-308-7141 (Mon-Fri 2:00pm to 7:00pm CET)
Email: ONlit-french@hibbertco.com
English Phone: (+1) 303-308-7142 (Mon-Fri 12:00pm to 5:00pm GMT)
Email: ONlit@hibbertco.com

EUROPEAN TOLL-FREE ACCESS*: 00-800-4422-3781

*Available from Germany, France, Italy, UK, Ireland

CENTRAL/SOUTH AMERICA:

Spanish Phone: 303-308-7143 (Mon-Fri 8:00am to 5:00pm MST)
Email: ONlit-spanish@hibbertco.com
Toll-Free from Mexico: Dial 01-800-288-2872 for Access –
then Dial 866-297-9322

ASIA/PACIFIC: LDC for ON Semiconductor – Asia Support

Phone: 303-675-2121 (Tue-Fri 9:00am to 1:00pm, Hong Kong Time)
Toll Free from Hong Kong & Singapore:
001-800-4422-3781

Email: ONlit-asia@hibbertco.com

JAPAN: ON Semiconductor, Japan Customer Focus Center



4-32-1 Nishi-Gotanda, Shinagawa-ku, Tokyo, Japan 141-0031
Phone: 81-3-5740-2700
Email: r14525@onsemi.com

ON Semiconductor Website: <http://onsemi.com>

For additional information, please contact your local Sales Representative.

Looking for pricing, stock, or lifecycle information?

Click below to explore more details on WIN SOURCE:

-  [View MR2502 on WIN SOURCE](#)
-  [ON Semiconductor Information](#)

Optimize Your Supply Chain with WIN SOURCE Solutions

-  Global Sourcing Solution
-  Obsolete Management
-  Cost Control Management
-  Shortage Management
-  Alternative Solution
-  Excess Inventory Management