



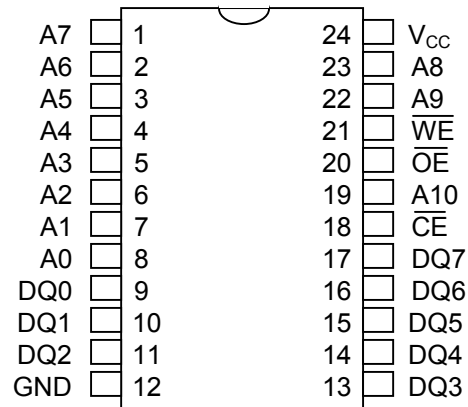
**THE DATASHEET OF
DS2016-100**



FEATURES

- Low-power CMOS design
- Standby current
 - 50nA max at $t_A = +25^\circ\text{C}$ $V_{CC} = 3.0\text{V}$
 - 100nA max at $t_A = +25^\circ\text{C}$ $V_{CC} = 5.5\text{V}$
 - 1 μA max at $t_A = +60^\circ\text{C}$ $V_{CC} = 5.5\text{V}$
- Full operation for $V_{CC} = 5.5\text{V}$ to 2.7V
- Data retention voltage = 5.5V to 2.0V
- Fast 5V access time
 - DS2016-100 100ns
- Reduced-speed 3V access time
 - DS2016-100 250ns
- Operating temperature range of -40°C to $+85^\circ\text{C}$
- Full static operation
- TTL compatible inputs and outputs over voltage range of 5.5V to 2.7V
- Available in 24-pin DIP and 24-pin SO packages
- Suitable for both battery operated and battery backup applications

PIN ASSIGNMENT



DS2016 24-Pin DIP (600mil)
DS2016R 24-Pin SO (300mil)

PIN DESCRIPTION

- A0 to A10 - Address Inputs
- DQ0 to DQ7 - Data Input/Output
- $\overline{\text{CE}}$ - Chip Enable Input
- $\overline{\text{WE}}$ - Write Enable Input
- $\overline{\text{OE}}$ - Output Enable Input
- V_{CC} - Power Supply Input 2.7V - 5.5V
- GND - Ground

DESCRIPTION

The DS2016 2k x 8 3V/5V Operation Static RAM is a 16,384-bit, low-power, fully static random access memory organized as 2048 words by 8 bits using CMOS technology. The device operates from a single power supply with a voltage input between 2.7V and 5.5V. The chip enable input ($\overline{\text{CE}}$) is used for device selection and can be used in order to achieve the minimum standby current mode, which facilitates both battery operated and battery backup applications. The device provides access times as fast as 100ns when operated from a 5V power supply input and also provides relatively good performance of 250ns access while operating from a 3V input. The device maintains TTL-level inputs and outputs over the input voltage range of 2.7V to 5.5V. The DS2016 is most suitable for low-power applications where battery operation or battery backup for nonvolatility is required. The DS2016 is a JEDEC-standard 2k x 8 SRAM and is pin-compatible with ROM and EPROM of similar density.

OPERATION MODE

MODE	$\overline{\text{CE}}$	$\overline{\text{OE}}$	$\overline{\text{WE}}$	A0-A10	DQ-DQ7	POWER
READ	L	L	H	STABLE	DATA OUT	I_{CCO}
WRITE	L	X	L	STABLE	DATA IN	I_{CCO}
DESELECT	L	H	H	X	HIGH-Z	I_{CCO}
STANDBY	H	X	X	X	HIGH-Z	I_{CCS}

ABSOLUTE MAXIMUM RATINGS

SYMBOL	PARAMETER	RATING
V_{CC}	Power Supply Voltage	-0.3V to +7.0V
$V_{\text{IN}}, V_{\text{IO}}$	Input, Input/Output Voltage	-0.3 to $V_{\text{CC}} + 0.3\text{V}$
T_{STG}	Storage Temperature	-55°C to +125°C
T_{OPR}	Operating Temperature	-40°C to +85°C
T_{SOLDER}	Soldering Temperature/Time	IPC/JEDEC J-STD-020

CAPACITANCE

+25°C)

 $(T_{\text{A}} =$

PARAMETER	SYMBOL	MIN	TYP	MAX	UNITS	NOTES
Input Capacitance	C_{IN}		5	10	pF	
Input/Output Capacitance	C_{IO}		5	12	pF	

+5-VOLT OPERATION**RECOMMENDED DC OPERATING CONDITIONS** $(T_{\text{A}} = -40^{\circ}\text{C to } +85^{\circ}\text{C})$

PARAMETER	SYMBOL	MIN	TYP	MAX	UNITS	NOTES
Power Supply Voltage	V_{CC}	4.5	5.0	5.5	V	
Input High Voltage	V_{IH}	2.0		$V_{\text{CC}} + 0.3$	V	
Input Low Voltage	V_{IL}	-0.3		0.8	V	
Data Retention Voltage	V_{DR}	2.0		5.5	V	

DC CHARACTERISTICS $(T_{\text{A}} = -40^{\circ}\text{C to } +85^{\circ}\text{C}; V_{\text{CC}} = 5\text{V} \pm 10\%)$

PARAMETER	SYMBOL	CONDITIONS	MIN	TYP	MAX	UNITS
Input Leakage Current	I_{IL}	$0\text{V} \leq V_{\text{IN}} \leq V_{\text{CC}}$			± 0.1	μA
I/O Leakage Current	I_{LO}	$\overline{\text{CE}} = V_{\text{IH}}, 0\text{V} \leq V_{\text{IO}} \leq V_{\text{CC}}$			± 0.5	μA
Output High Current	I_{OH}	$V_{\text{OH}} = 2.4\text{V}$	-1.0			mA
Output Low Current	I_{OL}	$V_{\text{OL}} = 0.4\text{V}$	4.0			mA
Standby Current	I_{CCS1}	$\overline{\text{CE}} = 2.0\text{V}$			0.3	mA
Standby Current	I_{CCS2}	$\overline{\text{CE}} \geq V_{\text{CC}} - 0.5\text{V}, t_{\text{A}} = +60^{\circ}\text{C}$			1	μA
Standby Current	I_{CCS2}	$\overline{\text{CE}} \geq V_{\text{CC}} - 0.5\text{V}, t_{\text{A}} = +25^{\circ}\text{C}$			100	nA
Operating Current	I_{CCO}	$\overline{\text{CE}} = 0.8\text{V}, 200\text{ns cycle}$			55	mA

AC CHARACTERISTICS READ CYCLE ($T_A = -40^{\circ}\text{C}$ to $+85^{\circ}\text{C}$; $V_{CC} = 5\text{V} \pm 10\%$)

PARAMETER	SYMBOL	DS2016-100			UNITS	NOTES
		MIN	TYP	MAX		
Read Cycle Time	t_{RC}	100			ns	
Access Time	t_{ACC}			100	ns	
\overline{OE} to Output Valid	t_{OE}			50	ns	
\overline{CE} to Output Valid	t_{CO}			100	ns	
\overline{CE} or \overline{OE} to Output Active	t_{COE}	5			ns	
Output High-Z from Deselection	t_{OD}	5		35	ns	
Output Hold from Address Change	t_{OH}	5			ns	

AC CHARACTERISTICS WRITE CYCLE ($T_A = -40^{\circ}\text{C}$ to $+85^{\circ}\text{C}$; $V_{CC} = 5\text{V} \pm 10\%$)

PARAMETER	SYMBOL	DS2016-100			UNITS	NOTES
		MIN	TYP	MAX		
Write Cycle Time	t_{WC}	100			ns	
Write Pulse Width	t_{WP}	75			ns	
Address Setup Time	t_{AW}	0			ns	
Write Recovery Time	t_{WR}	10			ns	
Output High-Z from \overline{WE}	t_{ODW}			35	ns	
Output Active from \overline{WE}	t_{OEWE}	5			ns	
Data Setup Time	t_{DS}	40			ns	
Data Hold Time	t_{DH}	0			ns	

DATA RETENTION CHARACTERISTICS ($T_A = -40^{\circ}\text{C}$ to $+85^{\circ}\text{C}$)

PARAMETER	SYMBOL	CONDITIONS	MIN	TYP	MAX	UNITS
Data Retention Supply Voltage	V_{DR}	$\overline{CE} \geq V_{CC} - 0.5\text{V}$	2.0		5.5	V
Data Retention Current at 5.5V	I_{CCR1}	$\overline{CE} \geq V_{CC} - 0.5\text{V}$		0.1*	1	μA
Data Retention Current at 2.0V	I_{CCR2}	$\overline{CE} \geq V_{CC} - 0.5\text{V}$		50*	750	nA
Chip Deselect to Data Retention	t_{CDR}		0			μs
Recovery Time	t_R		2			ms

* Typical values are at $+25^{\circ}\text{C}$

+3-VOLT OPERATION**RECOMMENDED DC OPERATING CONDITIONS** ($T_A = -40^\circ\text{C}$ to $+85^\circ\text{C}$)

PARAMETER	SYMBOL	MIN	TYP	MAX	UNITS	NOTES
Power Supply Voltage	V_{CC}	2.7	3.0	3.5	V	
Input High Voltage	V_{IH}	2.0		$V_{CC} + 0.3$	V	
Input Low Voltage	V_{IL}	-0.3		0.6	V	
Data Retention Voltage	V_{DR}	2.0		3.5	V	

DC CHARACTERISTICS ($T_A = -40^\circ\text{C}$ to $+85^\circ\text{C}$; $V_{CC} = 2.7\text{V}$ to 3.5V)

PARAMETER	SYMBOL	CONDITIONS	MIN	TYP	MAX	UNITS
Input Leakage Current	I_{IL}	$0\text{V} \leq V_{IN} \leq V_{CC}$			± 0.1	μA
I/O Leakage Current	I_{LO}	$\overline{CE} = V_{IH}, 0\text{V} \leq V_{IO} \leq V_{CC}$			± 0.5	μA
Output High Current	I_{OH}	$V_{OH} = 2.2\text{V}$	-0.5			mA
Output Low Current	I_{OL}	$V_{OL} = 0.4\text{V}$	4.0			mA
Standby Current	I_{CCS1}	$\overline{CE} = 2.0\text{V}$			0.1	mA
Standby Current	I_{CCS2}	$\overline{CE} \geq V_{CC} - 0.3\text{V}, T_A = +60^\circ\text{C}$			500	nA
Standby Current	I_{CCS2}	$\overline{CE} \geq V_{CC} - 0.3\text{V}, T_A = +25^\circ\text{C}$			50	nA
Operating Current	I_{CCO}	$\overline{CE} = 0.6\text{V}$ min cycle			25	mA

AC CHARACTERISTICS READ CYCLE($T_A = -40^\circ\text{C}$ to $+85^\circ\text{C}$; $V_{CC} = 2.7\text{V}$ to 3.5V)

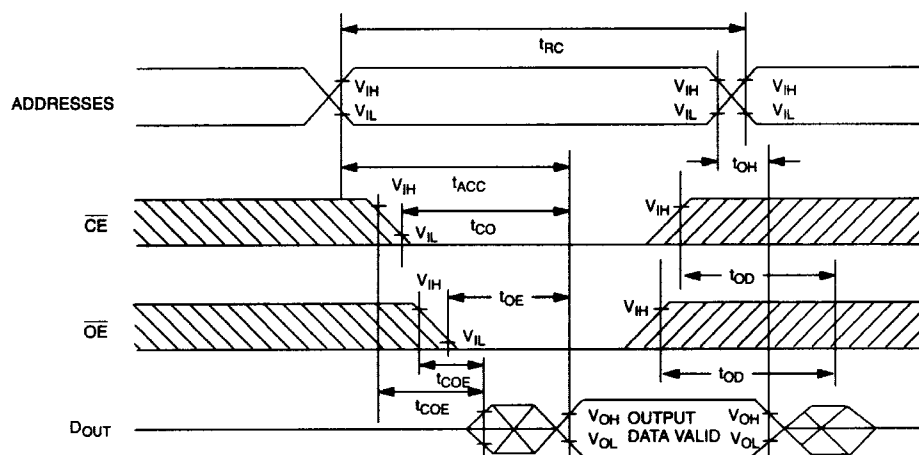
PARAMETER	SYMBOL	MIN	TYP	MAX	UNITS	NOTES
Read Cycle Time	t_{RC}	250			ns	
Access Time	t_{ACC}			250	ns	
\overline{OE} to Output Valid	t_{OE}			120	ns	
\overline{CE} to Output Valid	t_{CO}			250	ns	
\overline{CE} or \overline{OE} to Output Active	t_{COE}	15			ns	
Output High-Z from Deselection	t_{OD}	5		100	ns	
Output Hold from Address Change	t_{OH}	15			ns	

AC CHARACTERISTICS WRITE CYCLE $(T_A = -40^{\circ}\text{C to } +85^{\circ}\text{C}; V_{CC} = 2.7\text{V to } 3.5\text{V})$

PARAMETER	SYMBOL	MIN	TYP	MAX	UNITS	NOTES
Write Cycle Time	t_{WC}	250			ns	
Write Pulse Width	t_{WP}	190			ns	
Address Setup Time	t_{AW}	0			ns	
Write Recovery Time	t_{WR}	25			ns	
Output High-Z from $\overline{\text{WE}}$	t_{ODW}			90	ns	
Output Active from $\overline{\text{WE}}$	t_{OEW}	5			ns	
Data Setup Time	t_{DS}	100			ns	
Data Hold Time	t_{DH}	0			ns	

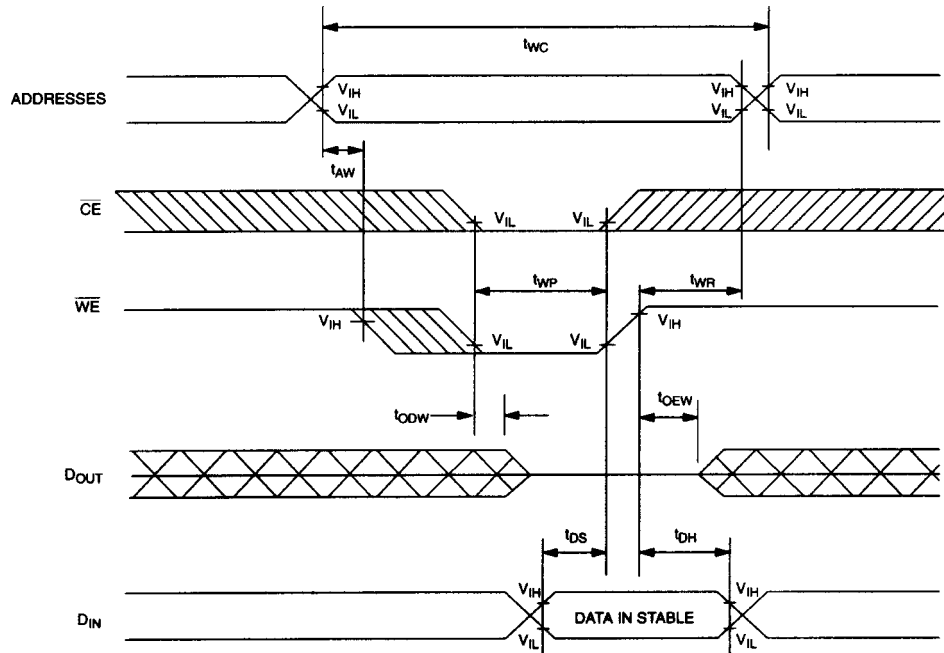
DATA RETENTION CHARACTERISTICS $(T_A = -40^{\circ}\text{C to } +85^{\circ}\text{C})$

PARAMETER	SYMBOL	CONDITIONS	MIN	TYP	MAX	UNITS
Data Retention Supply Voltage	V_{DR}	$\overline{\text{CE}} \geq V_{CC} - 0.3\text{V}$	2.0		3.5	V
Data Retention Current at 3.5V	I_{CCR1}	$\overline{\text{CE}} \geq V_{CC} - 0.3\text{V}$		50*	1000	nA
Data Retention Current at 2.0V	I_{CCR2}	$\overline{\text{CE}} \geq V_{CC} - 0.3\text{V}$		50*	750	nA
Chip Deselect to Data Retention	t_{CDR}		0			μs
Recovery Time	t_R		2			ms

* Typical values are at $+25^{\circ}\text{C}$ **TIMING DIAGRAM: READ CYCLE**

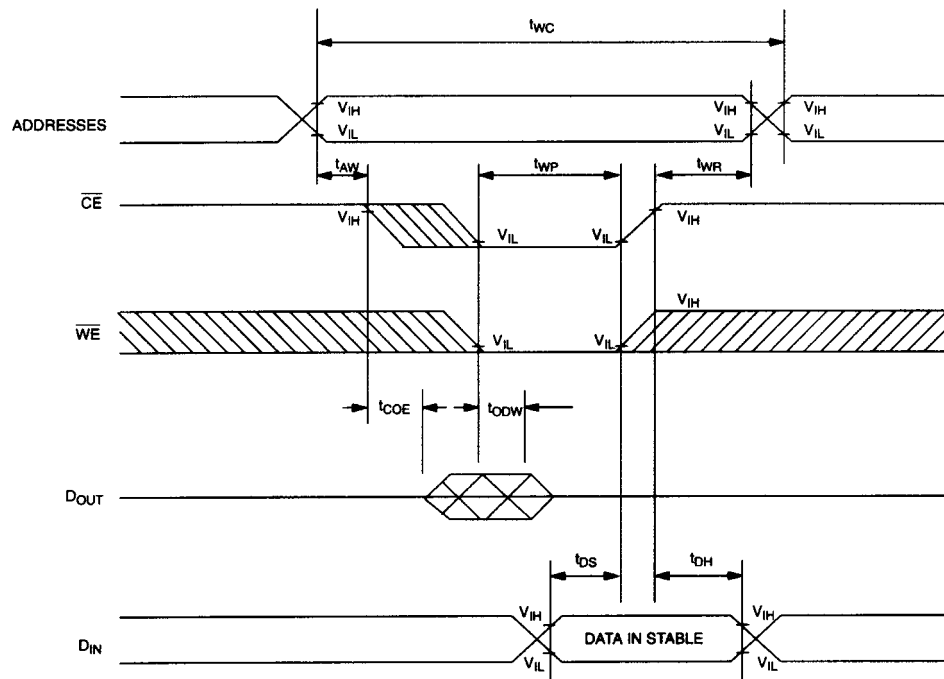
SEE NOTE 1

TIMING DIAGRAM: WRITE CYCLE 1

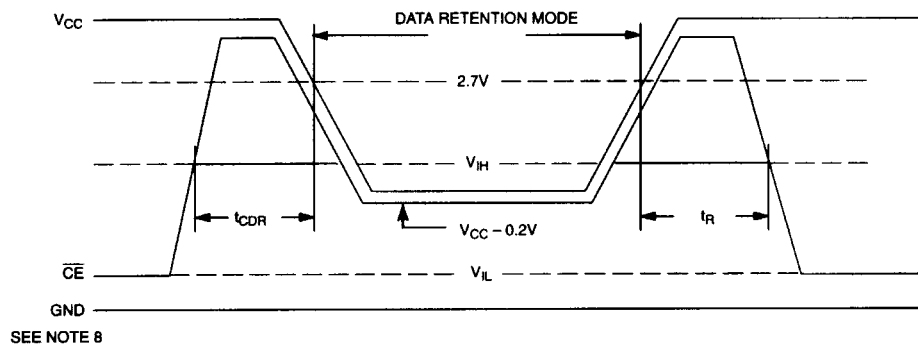


SEE NOTES 2, 3, 4, 5, 6, AND 7

TIMING DIAGRAM: WRITE CYCLE 2



SEE NOTES 2, 3, 4, 5, 6, AND 7

TIMING DIAGRAM: DATA RETENTION - POWER-UP, POWER-DOWN Figure 1

SEE NOTE 8

SEE NOTE 8

NOTES:

- 1) \overline{WE} is high for read cycles.
- 2) $\overline{OE} = V_{IH}$ or V_{IL} . If $\overline{OE} = V_{IH}$ during write cycle, the output buffers remain in a high impedance state.
- 3) t_{WP} is specified as the logical AND of \overline{CE} and \overline{WE} . t_{WP} is measured from the latter of \overline{CE} or \overline{WE} going low to the earlier of \overline{CE} or \overline{WE} going high.
- 4) t_{DH} and t_{DS} are measured from the earlier of \overline{CE} or \overline{WE} going high.
- 5) If the \overline{CE} low transition occurs simultaneously with or later than the \overline{WE} low transition, the output buffers remain in a high impedance state.
- 6) If the \overline{CE} high transition occurs prior to or simultaneously with the \overline{WE} high transition, the output buffers remain in a high impedance state.
- 7) If \overline{WE} is low or the \overline{WE} low transition occurs prior to or simultaneously with the \overline{CE} low transition, the output buffers remain in a high impedance state.
- 8) If the V_{IH} level of CE is 2.0V during the period that V_{CC} voltage is going down from 4.5V to 2.7V, I_{CCS1} current flows.
- 9) The DS2016 maintains full operation from 5.5V to 2.7V. The electrical characteristics tables show two tested and guaranteed points of operation. For operation between 4.5V and 3.5V, use the composite worst case characteristics from both 5V and 3V operation for design purposes.

DC TEST CONDITIONS

Outputs Open

All voltages are referenced to ground.

AC TEST CONDITIONS

Output Load: 100pF + 1TTL Gate

Input Pulse Levels: 0V - 3.0V

Timing Measurement Reference Levels

Input: 1.5V

Output: 1.5V



Input Pulse Rise and Fall Times: 5ns

PACKAGE INFORMATION

For the latest package outline information, go to www.maxim-ic.com/DallasPackInfo.

Looking for pricing, stock, or lifecycle information?

Click below to explore more details on WIN SOURCE:

-  [View DS2016-100 on WIN SOURCE](#)
-  [Maxim Integrated Information](#)

Optimize Your Supply Chain with WIN SOURCE Solutions

-  Global Sourcing Solution
-  Obsolete Management
-  Cost Control Management
-  Shortage Management
-  Alternative Solution
-  Excess Inventory Management