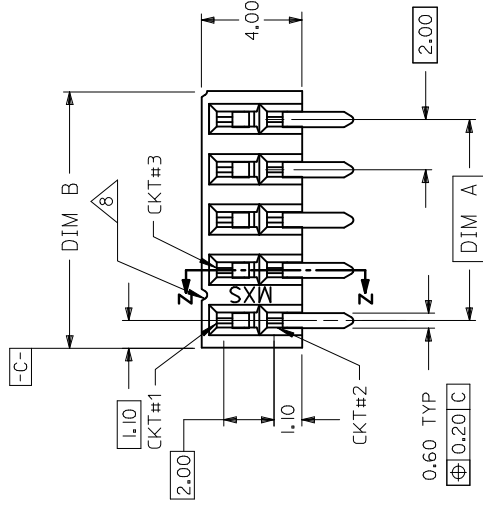




**THE DATASHEET OF**  
**87264-2052**



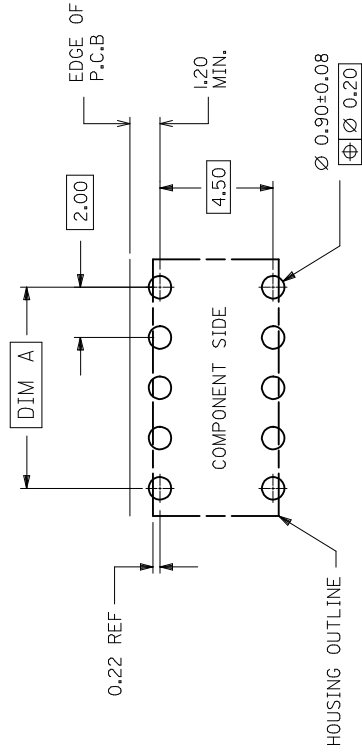


PART NO. LEGEND  
87264 - \* \* \* 5 \*  
CIRCUIT SIZE

PLATING  
POST-PLATED

- 2 - 0.38um/15uin MIN  
2.54um/100uin NI
- 3 - 0.76um/30uin MIN  
2.54um/100uin NI
- 4 - 0.05-0.25um/2-10  
2.54um/100uin NI
- 8 - 0.38um/15uin MIN  
2.54um/100uin NI
- 9 - 0.76um/30uin MIN  
2.54um/100uin NI
- 5 - 0.05-0.25um/2-10  
2.54um/100uin NI

SECTION Z-Z



RECOMMENDED P.C. BOARD LAYOUT

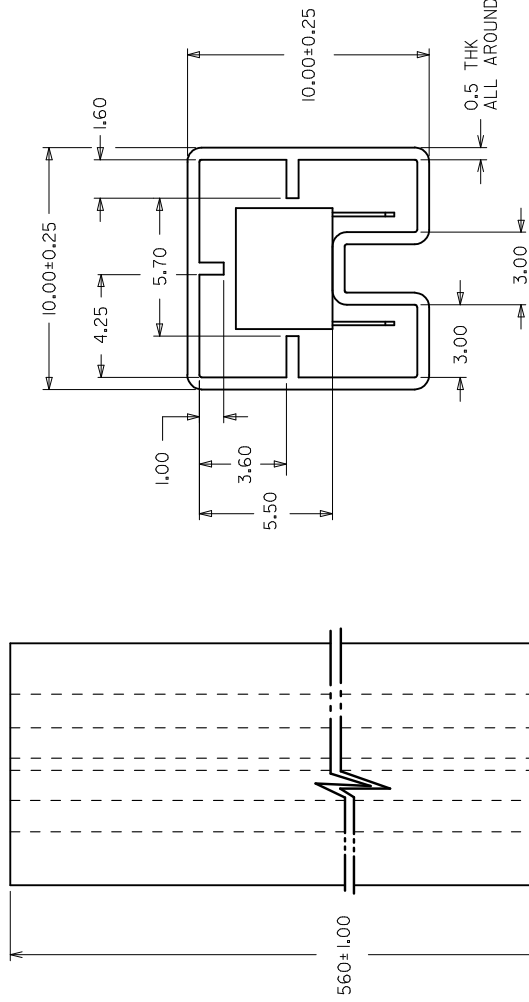
- NOTES:
1. IO CIRCUIT SIZE SHOWN FOR ILLUSTRATION ONLY. SEE CHART FOR AVAILABLE PART SIZES.
  2. PLATING FINISH: TERMINAL - AS PER LEGEND
  3. RECOMMENDED PC BOARD THICKNESS IS 1.60 ±0.10mm.
  4. PRODUCT SPECIFICATION PS-87264 APPLIES.
  5. PART IS MATEABLE TO ALL MILLI-GRID HEADERS WITH MATING PIN LENGTH BETWEEN 2.50mm AND 4.20mm.
  6. TAPE & REEL OPTION IS SHOWN ON SHT 3 WITH 8 CKT ILLUSTRATION
  7. PARTS SHALL BE PACKED IN MOISTURE BARRIER BAG.
  8. FIRST CIRCUIT TO BE IDENTIFIED BY A NOTCH ACROSS TOP OF HOUSING AND IS LOCATED BETWEEN CIRCUIT 1&3 AS SHOWN.

QUALITY SYMBOLS	GENERAL TOLERANCES (UNLESS SPECIFIED)	DIMENSION STYLE	SCALE
▽=0	4 PLACES ± --- INCH	MM ONLY	NT
▽=0	3 PLACES ± ---	DRAWN BY	DATE
▽=0	2 PLACES ± 0.2	JWAN	1992/02/25
▽=0	1 PLACE ± ---	CHECKED BY	DATE
	0 PLACE ±	MLAI	1992/02/25
		APPROVED BY	DATE
		RWONG	1992/02/25
		MATERIAL NO.	DOCUMENT
		SEE TABLE	
	DRAFT WHERE APPLICABLE MUST REMAIN WITHIN DIMENSIONS	SIZE THIS DRAWING CONTAINS IF INCORPORATED AND SHOULD	
		A3	




10 9 8 7 6 5 4 3

PART NUMBER  
0.38um GOLD  
PLATING 

87264-0652
87264-0852
87264-1052
87264-1252
87264-1452
87264-1652
87264-1852
87264-2052
87264-2252
87264-2452
87264-2652
87264-2852
87264-3052
87264-3252
87264-3452
87264-3652
87264-3852
87264-4052
87264-4252
87264-4452
87264-4652
87264-4852
87264-5052



PART IN TUBE ORIENTATION.

SEE SHEET 3 FC NO: S2017-0673 DRWN:GMENARLY 2017/05/18 CHKD:SCHEONG 2017/07/03 APPR:KHLIM 2017/07/05	QUALITY SYMBOLS	GENERAL TOLERANCES (UNLESS SPECIFIED)	DIMENSION STYLE	SCALE
	 = 0  = 0  = 0	4 PLACES ± --- 3 PLACES ± --- 2 PLACES ± 0.2 1 PLACE ± --- 0 PLACE ± ---	MM ONLY	NT
REV	DESCRIPTION	ANGULAR ± 3 °	DRAWN BY	TITLE
E4	SEE SHEET 3 FC NO: S2017-0673 DRWN:GMENARLY 2017/05/18 CHKD:SCHEONG 2017/07/03 APPR:KHLIM 2017/07/05	DRAFT WHERE APPLICABLE MUST REMAIN WITHIN DIMENSIONS	JWAN 1992/02/25	
			CHECKED BY	
			MLAI 1992/02/25	
			APPROVED BY	
			RWONG 1992/02/25	
			MATERIAL NO.	DOCUMENT
			SEE TABLE	
			SIZE	THIS DRAWING CONTAINS 1
			A3	INCORPORATED AND SHOULD

fb\_frame\_A3\_P\_AM\_T  
Rev. G 2012/01/11

10 9 8 7 6 5 4 3

F

E

D

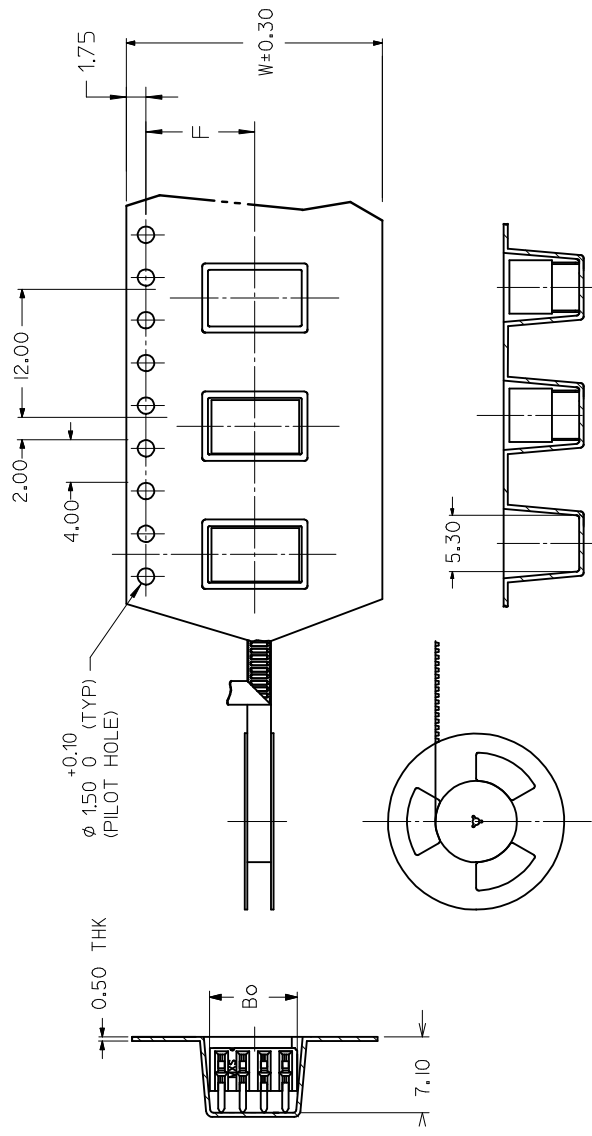
C

B

A

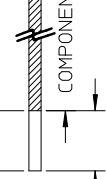
4	PART NUMBER 0.38um GOLD PLATING $\triangle 2$ (IN TAPE/REEL)	3	PART NUMBER 0.76um GOLD PLATING $\triangle 2$ (IN TAPE/REEL)
	87264-0858		87264-0859
	87264-1658		-

(E4)



NOTES:

- LEADER AND TRAILER TAPE  
160 MIN. TOP TAPE TRAILER
- 160 MIN. TAIL PART (EMPTY)



- PEELING OFF FORCE OF TAPE  
(PEELING DIRECTION AS SHOWN)



CUSTOMER PULL OUT DIRECTION  $\rightarrow$

- PACKAGING STANDARD IS JIS B 3037
- TAPE & REEL QUANTITY = 3000

ADD 87264-1658	EC NO: S2017-0673	DRW N: GMENARLY	2017/05/18
APP R: KHL IM	CH'KD: SCHEONG	2017/07/03	
2017/07/05	DESCRIPTION	REV	

QUALITY SYMBOLS	GENERAL TOLERANCES (UNLESS SPECIFIED)	SCALING
$\nabla = 0$	mm	MM ONLY
$\nabla = 0$	INCH	DATE
$\nabla = 0$	4 PLACES $\pm$ ---	JWAN
	3 PLACES $\pm$ ---	1992/02/25
	2 PLACES $\pm 0.2$	CHECKED BY
	1 PLACE $\pm$ ---	MLAI
	0 PLACE $\pm$ ---	1992/02/25
	ANGULAR $\pm 3^\circ$	APPROVED BY
	DRAFT WHERE APPLICABLE MUST REMAIN WITHIN DIMENSIONS	RWONG
		1992/02/25
		MATERIAL NO.

SEE TABLE

THIS DRAWING CONTAINS INFORMATION THAT IS NOT TO BE INCORPORATED AND SHOULD BE DELETED FROM THE DRAWING.

## Looking for pricing, stock, or lifecycle information?

Click below to explore more details on WIN SOURCE:

 [View 87264-2052 on WIN SOURCE](#)

 [Molex, LLC Information](#)

## Optimize Your Supply Chain with WIN SOURCE Solutions

-  Global Sourcing Solution
-  Obsolete Management
-  Cost Control Management
-  Shortage Management
-  Alternative Solution
-  Excess Inventory Management