



**THE DATASHEET OF  
INA159AIDGKRG4**





## Precision, Gain of 0.2 Level Translation DIFFERENCE AMPLIFIER

### FEATURES

- GAIN OF 0.2 TO INTERFACE  $\pm 10\text{V}$  SIGNALS TO SINGLE-SUPPLY ADCs
- GAIN ACCURACY:  $\pm 0.024\%$  (max)
- WIDE BANDWIDTH: 1.5MHz
- HIGH SLEW RATE:  $15\text{V}/\mu\text{s}$
- LOW OFFSET VOLTAGE:  $\pm 100\mu\text{V}$
- LOW OFFSET DRIFT:  $\pm 1.5\mu\text{V}/^\circ\text{C}$
- SINGLE-SUPPLY OPERATION DOWN TO 1.8V

### APPLICATIONS

- INDUSTRIAL PROCESS CONTROLS
- INSTRUMENTATION
- DIFFERENTIAL TO SINGLE-ENDED CONVERSION
- AUDIO LINE RECEIVERS

### DESCRIPTION

The INA159 is a high slew rate,  $G = 1/5$  difference amplifier consisting of a precision op amp with a precision resistor network. The gain of  $1/5$  makes the INA159 useful to couple  $\pm 10\text{V}$  signals to single-supply analog-to-digital converters (ADCs), particularly those operating on a single  $+5\text{V}$  supply. The on-chip resistors are laser-trimmed for accurate gain and high common-mode rejection. Excellent temperature coefficient of resistance (TCR) tracking of the resistors maintains gain accuracy and common-mode rejection over temperature. The input common-mode voltage range extends beyond the positive and negative supply rails. It operates on a total of  $+1.8\text{V}$  to  $+5.5\text{V}$  single or split supplies. The INA159 reference input uses two resistors for easy mid-supply or reference biasing.

The difference amplifier is the foundation of many commonly-used circuits. The INA159 provides this circuit function without using an expensive external precision resistor network. The INA159 is available in an MSOP-8 surface-mount package and is specified for operation over the extended industrial temperature range,  $-40^\circ\text{C}$  to  $+125^\circ\text{C}$ .

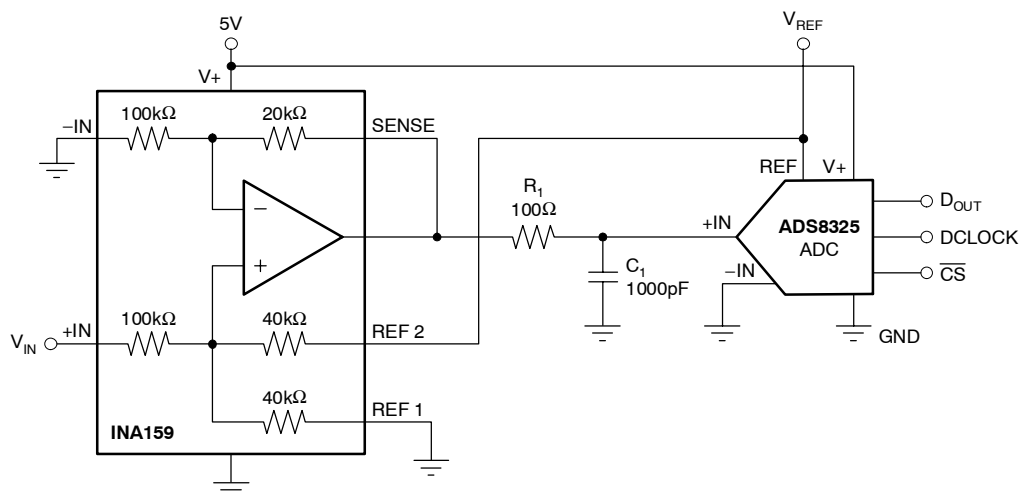


Figure 1. Typical Application



Please be aware that an important notice concerning availability, standard warranty, and use in critical applications of Texas Instruments semiconductor products and disclaimers thereto appears at the end of this data sheet.

All trademarks are the property of their respective owners.

**ABSOLUTE MAXIMUM RATINGS<sup>(1)</sup>**

|   |                            |
|---|----------------------------|
| Supply Voltage                                | +5.5V                      |
| Signal Input Terminals (-IN and +IN), Voltage | ±30V                       |
| Reference (REF 1 and REF2) and Sense Pins     |                            |
| Current                                       | ±10mA                      |
| Voltage                                       | (V-) - 0.5V to (V+) + 0.5V |
| Output Short Circuit                          | Continuous                 |
| Operating Temperature                         | -40°C to +150°C            |
| Storage Temperature                           | -65°C to +150°C            |
| Junction Temperature                          | +150°C                     |
| ESD Rating                                    |                            |
| Human Body Model                              | 4000V                      |
| Charged Device Model                          | 1000V                      |

<sup>(1)</sup> Stresses above these ratings may cause permanent damage. Exposure to absolute maximum conditions for extended periods may degrade device reliability. These are stress ratings only, and functional operation of the device at these or any other conditions beyond those specified is not supported.



This integrated circuit can be damaged by ESD. Texas Instruments recommends that all integrated circuits be handled with appropriate precautions. Failure to observe proper handling and installation procedures can cause damage.

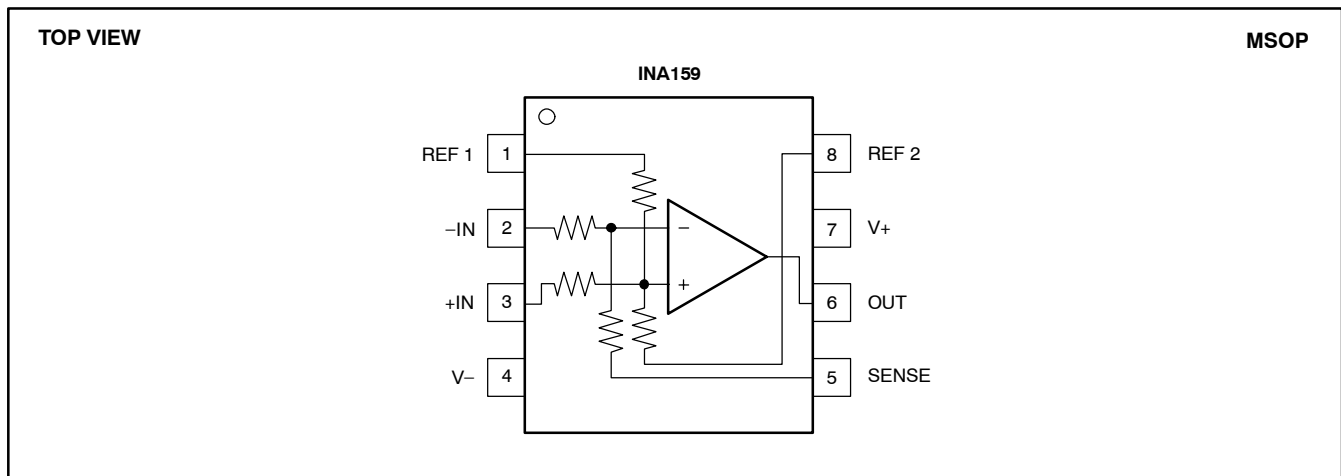
ESD damage can range from subtle performance degradation to complete device failure. Precision integrated circuits may be more susceptible to damage because very small parametric changes could cause the device not to meet its published specifications.

**ORDERING INFORMATION<sup>(1)</sup>**

| PRODUCT | PACKAGE-LEAD | PACKAGE DESIGNATOR | PACKAGE MARKING |
|---------|--------------|--------------------|-----------------|
| INA159  | MSOP-8       | DGK                | CJB             |

<sup>(1)</sup> For the most current package and ordering information, see the Package Option Addendum at the end of this document, or see the TI web site at [www.ti.com](http://www.ti.com).

**PIN CONFIGURATIONS**



**ELECTRICAL CHARACTERISTICS:  $V_S = +5V$** 
**Boldface** limits apply over the specified temperature range,  $T_A = -40^{\circ}\text{C}$  to  $+125^{\circ}\text{C}$ .

 At  $T_A = +25^{\circ}\text{C}$ ,  $R_L = 10\text{k}\Omega$  connected to  $V_S/2$ , REF pin 1 connected to ground, and REF pin 2 connected to  $V_{REF} = 5V$ , unless otherwise noted.

| PARAMETER                                 | CONDITIONS  | INA159   |                               |             | UNIT                           |
|---|---|--|-------------------------------|-------------|--------------------------------|
|   |   | MIN  | TYP                           | MAX         |                                |
| <b>OFFSET VOLTAGE<sup>(1)</sup></b>       | RTO   |  |                               |             |                                |
| Initial <sup>(1)</sup> $V_{OS}$           | $V_S = \pm 2.5V$ , Reference and Input Pins Grounded  |  | $\pm 100$                     | $\pm 500$   | $\mu\text{V}$                  |
| <b>vs Temperature</b>                     |   |  | <b><math>\pm 1.5</math></b>   |             | $\mu\text{V}/^{\circ}\text{C}$ |
| vs Power Supply                           | $V_S = \pm 0.9V$ to $\pm 2.75V$   |  | $\pm 20$                      | $\pm 100$   | $\mu\text{V}/V$                |
| Reference Divider Accuracy <sup>(2)</sup> |   |  | $\pm 0.002$                   | $\pm 0.024$ | %                              |
| <b>over Temperature</b>                   |   |  | <b><math>\pm 0.002</math></b> |             | %                              |
| <b>INPUT IMPEDANCE<sup>(3)</sup></b>      |   |  |                               |             |                                |
| Differential                              |   |  | 240                           |             | $\text{k}\Omega$               |
| Common-Mode                               |   |  | 60                            |             | $\text{k}\Omega$               |
| <b>INPUT VOLTAGE RANGE</b>                | RTI   |  |                               |             |                                |
| Common-Mode Voltage Range                 | $V_{CM}$  |  | 17.5                          |             | V                              |
| Positive                                  |   |  | -12.5                         |             | V                              |
| Negative                                  |   |  |                               |             |                                |
| Common-Mode Rejection Ratio               | $V_{CM} = -10V$ to $+10V$ , $R_S = 0\Omega$   | 80   | 96                            |             | dB                             |
| <b>over Temperature</b>                   |   |  | <b>94</b>                     |             | <b>dB</b>                      |
| <b>OUTPUT VOLTAGE NOISE<sup>(4)</sup></b> | RTO   |  |                               |             |                                |
| $f = 0.1\text{Hz}$ to $10\text{Hz}$       |   |  | 10                            |             | $\mu\text{V}_{PP}$             |
| $f = 10\text{kHz}$                        |   |  | 30                            |             | $\text{nV}/\sqrt{\text{Hz}}$   |
| <b>GAIN</b>                               | $V_{REF2} = 4.096V$ , $R_L$ Connected to GND,<br>$(V_{IN+}) - (V_{IN-}) = -10V$ to $+10V$ , $V_{CM} = 0V$ |  |                               |             |                                |
| Initial Error                             | G   |  | 0.2                           | $\pm 0.024$ | V/V                            |
| <b>vs Temperature</b>                     |   |  | $\pm 0.005$                   |             | %                              |
| Nonlinearity                              |   |  | $\pm 1$                       |             | $\text{ppm}/^{\circ}\text{C}$  |
|   |   |  | $\pm 0.0002$                  |             | % of FS                        |
| <b>OUTPUT</b>                             |   |  |                               |             |                                |
| Voltage, Positive                         | $V_{REF2} = 4.096V$ , $R_L$ Connected to GND  | $(V+) - 0.1$   | $(V+) - 0.02$                 |             | V                              |
| Voltage, Negative                         | $V_{REF2} = 4.096V$ , $R_L$ Connected to GND  | $(V-) + 0.048$   | $(V-) + 0.01$                 |             | V                              |
| Current Limit, Continuous to Common       |   |  | $\pm 60$                      |             | mA                             |
| Capacitive Load                           |   | See Typical Characteristic   |                               |             | pF                             |
| Open-Loop Output Impedance                | $f = 1\text{MHz}$ , $I_O = 0$   |  | 110                           |             | $\Omega$                       |
| <b>FREQUENCY RESPONSE</b>                 |   |  |                               |             |                                |
| Small-Signal Bandwidth                    | -3dB  |  | 1.5                           |             | MHz                            |
| Slew Rate                                 | SR  |  | 15                            |             | V/ $\mu\text{s}$               |
| Settling Time, 0.01%                      | $t_s$   | 4V Output Step, $C_L = 100\text{pF}$   | 1                             |             | $\mu\text{s}$                  |
| Overload Recovery Time                    |   | 50% Overdrive  | 250                           |             | ns                             |
| <b>POWER SUPPLY</b>                       |   |  |                               |             |                                |
| Specified Voltage Range                   | $V_S$   |  | +5                            |             | V                              |
| Operating Voltage Range                   |   | +1.8   |                               | +5.5        | V                              |
| Quiescent Current                         | $I_Q$   | $I_Q = 0\text{mA}$ , $V_S = \pm 2.5V$ ,<br>Reference and Input Pins Grounded | 1.1                           | 1.5         | mA                             |
| <b>TEMPERATURE RANGE</b>                  |   |  |                               |             |                                |
| Specified Range                           |   | -40  |                               | +125        | $^{\circ}\text{C}$             |
| Operating Range                           |   | -40  |                               | +150        | $^{\circ}\text{C}$             |
| Storage Range                             |   | -65  |                               | +150        | $^{\circ}\text{C}$             |
| Thermal Resistance                        | $\theta_{JA}$   | Surface-Mount  | 150                           |             | $^{\circ}\text{C}/\text{W}$    |
| MSOP-8                                    |   |  |                               |             |                                |

(1) Includes effects of amplifier input bias and offset currents.

(2) Reference divider accuracy specifies the match between the reference divider resistors using the configuration in Figure 2.

 (3) Internal resistors are ratio matched but have  $\pm 20\%$  absolute value.

(4) Includes effects of amplifier input current noise and thermal noise contribution of resistor network.

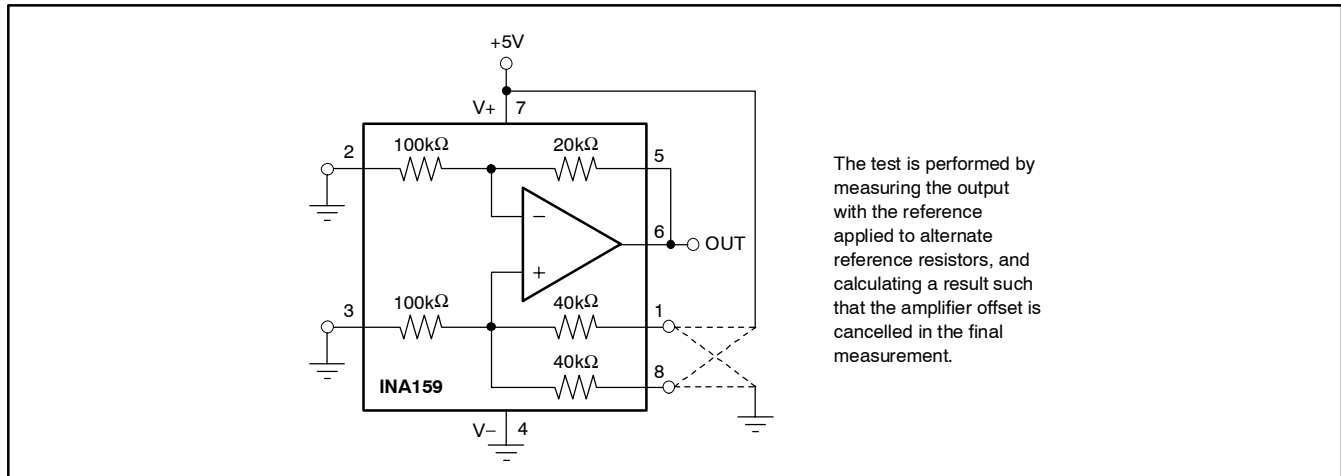
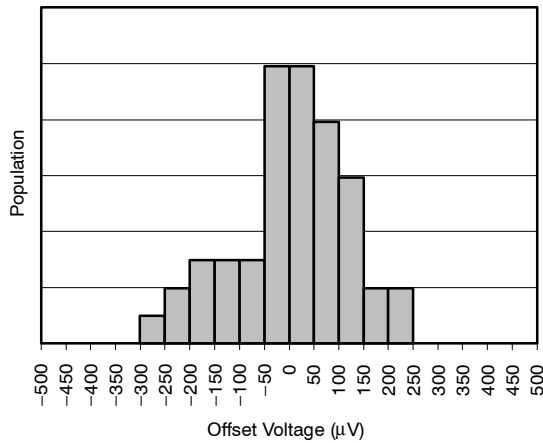


Figure 2. Test Circuit for Reference Divider Accuracy

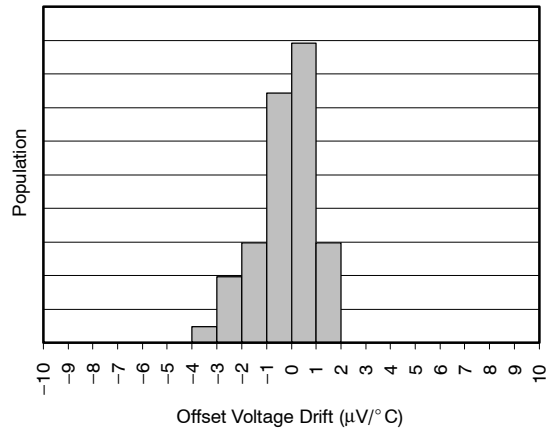
TYPICAL CHARACTERISTICS

At  $T_A = +25^\circ\text{C}$ ,  $R_L = 10\text{k}\Omega$  connected to  $V_S/2$ , REF pin 1 connected to ground, and REF pin 2 connected to  $V_{REF} = 5\text{V}$ , unless otherwise noted.

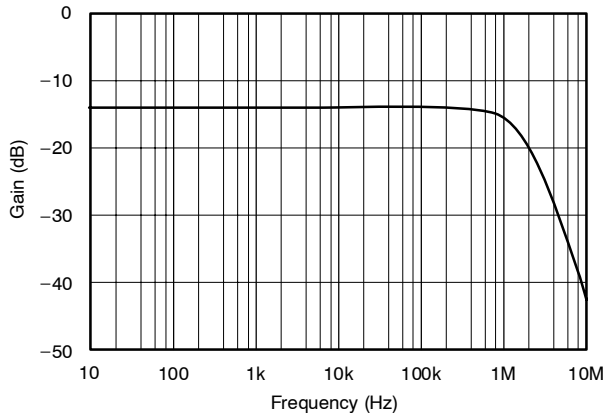
OFFSET VOLTAGE PRODUCTION DISTRIBUTION



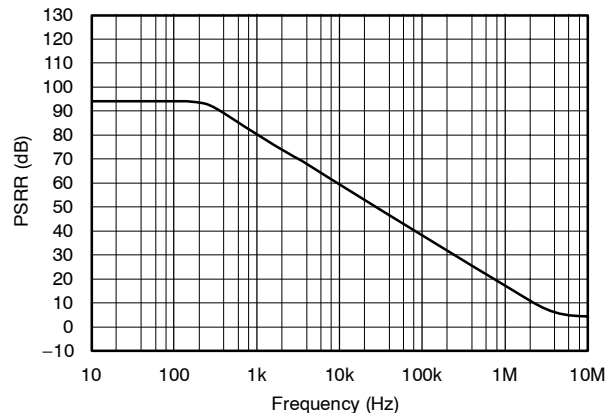
OFFSET VOLTAGE DRIFT PRODUCTION DISTRIBUTION



GAIN vs FREQUENCY

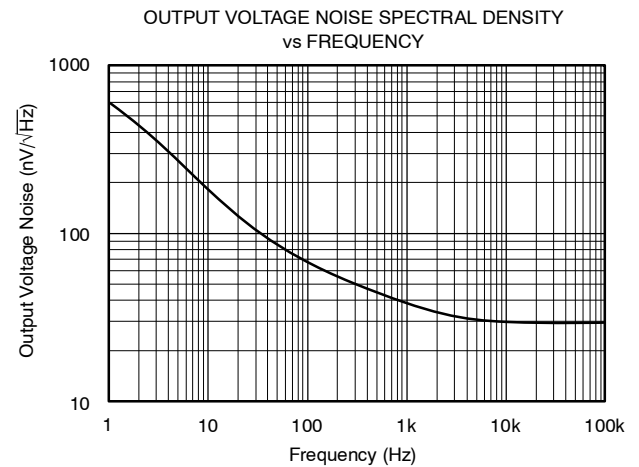
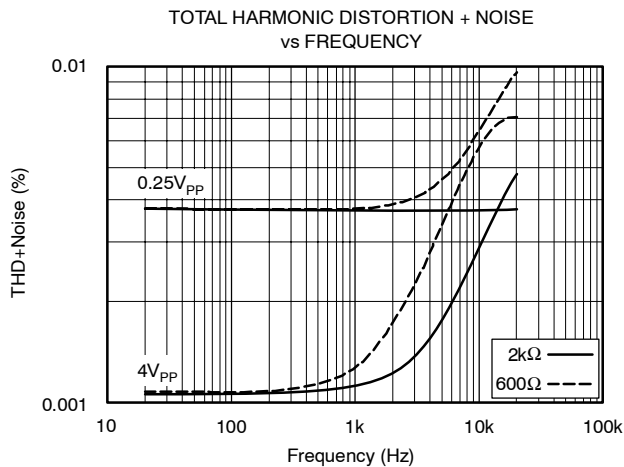
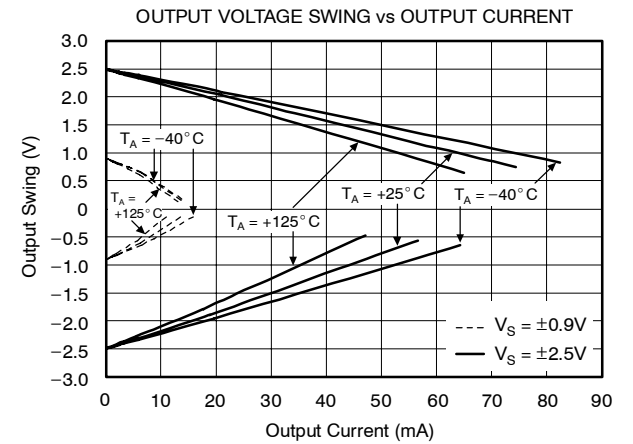
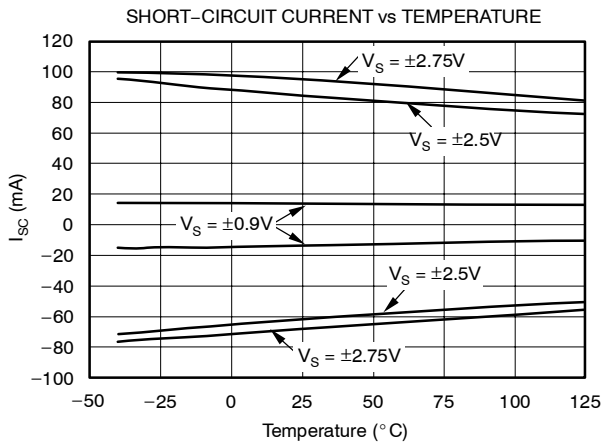
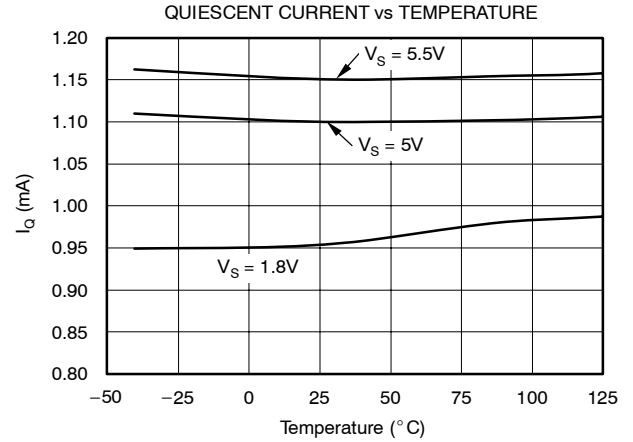
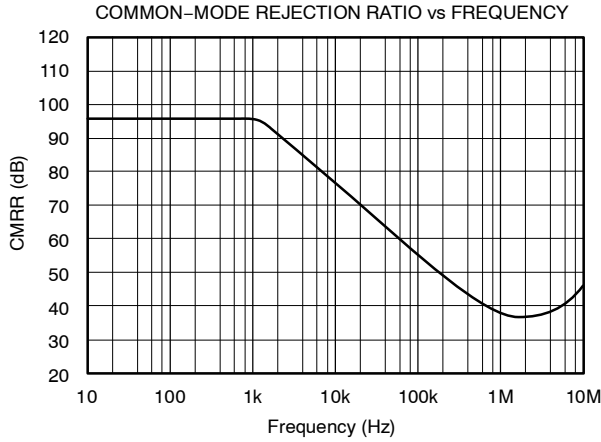


POWER-SUPPLY REJECTION RATIO vs FREQUENCY



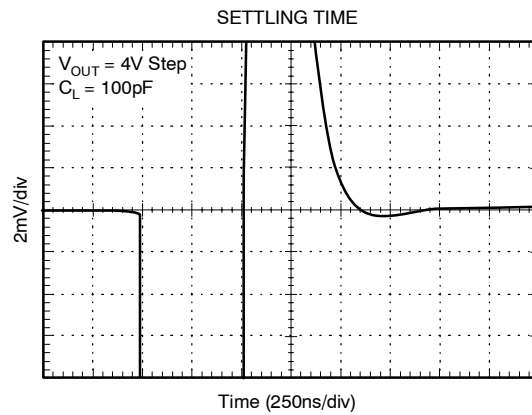
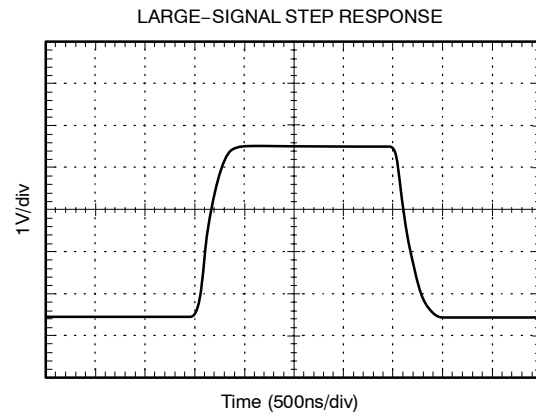
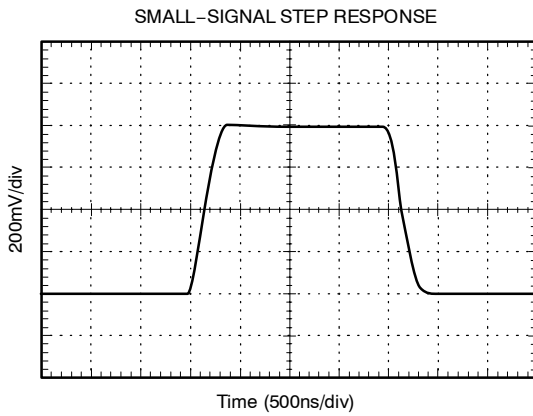
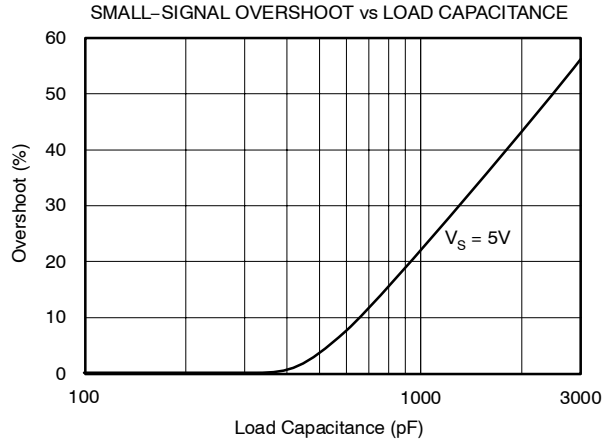
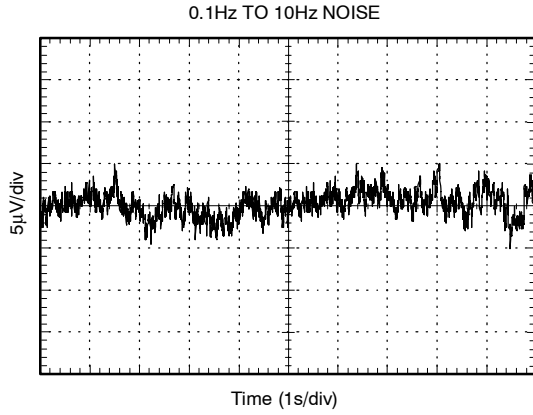
**TYPICAL CHARACTERISTICS (continued)**

At  $T_A = +25^\circ\text{C}$ ,  $R_L = 10\text{k}\Omega$  connected to  $V_S/2$ , REF pin 1 connected to ground, and REF pin 2 connected to  $V_{REF} = 5\text{V}$ , unless otherwise noted.



**TYPICAL CHARACTERISTICS (continued)**

At  $T_A = +25^\circ\text{C}$ ,  $R_L = 10\text{k}\Omega$  connected to  $V_S/2$ , REF pin 1 connected to ground, and REF pin 2 connected to  $V_{REF} = 5\text{V}$ , unless otherwise noted.



## APPLICATION INFORMATION

The internal op amp of the INA159 has a rail-to-rail common-mode voltage capability at its inputs. A rail-to-rail op amp allows the use of  $\pm 10V$  inputs into a circuit biased to 1/2 of a 5V reference (2.5V quiescent output). The inputs to the op amp will swing from approximately 400mV to 3.75V in this application.

The unique input topology of the INA159 eliminates the input offset transition region typical of most rail-to-rail complementary stage operational amplifiers. This allows the INA159 to provide superior glitch- and transition-free performance over the entire common-mode range.

Good layout practice includes the use of a 0.1 $\mu$ F bypass capacitor placed closely across the supply pins.

### COMMON-MODE RANGE

The common-mode range of the INA159 is a function of supply voltage and reference. Where both pins, REF1 and REF2, are connected together:

$$V_{CM+} = (V+) + 5[(V+) - V_{REF}] \quad (1)$$

$$V_{CM-} = (V-) - 5[V_{REF} - (V-)] \quad (2)$$

Where one REF pin is connected to the reference, and the other pin grounded (1/2 reference connection):

$$V_{CM+} = (V+) + 5[(V+) - (0.5V_{REF})] \quad (3)$$

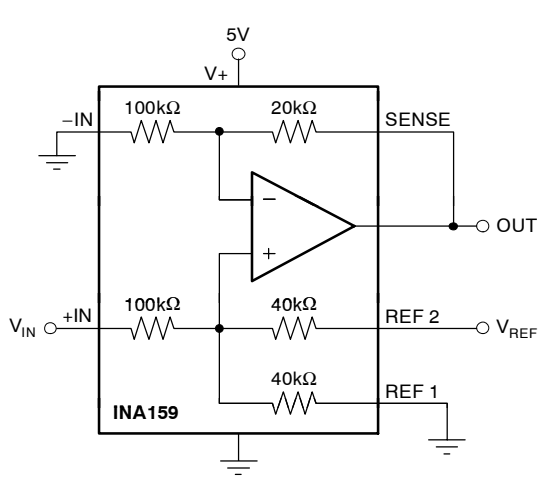
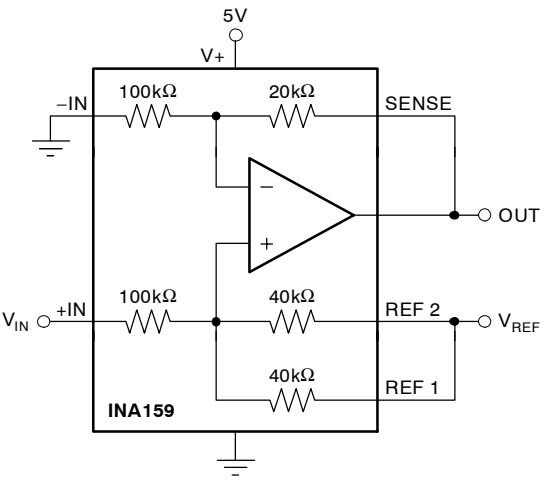
$$V_{CM-} = (V-) - 5[(0.5V_{REF}) - (V-)] \quad (4)$$

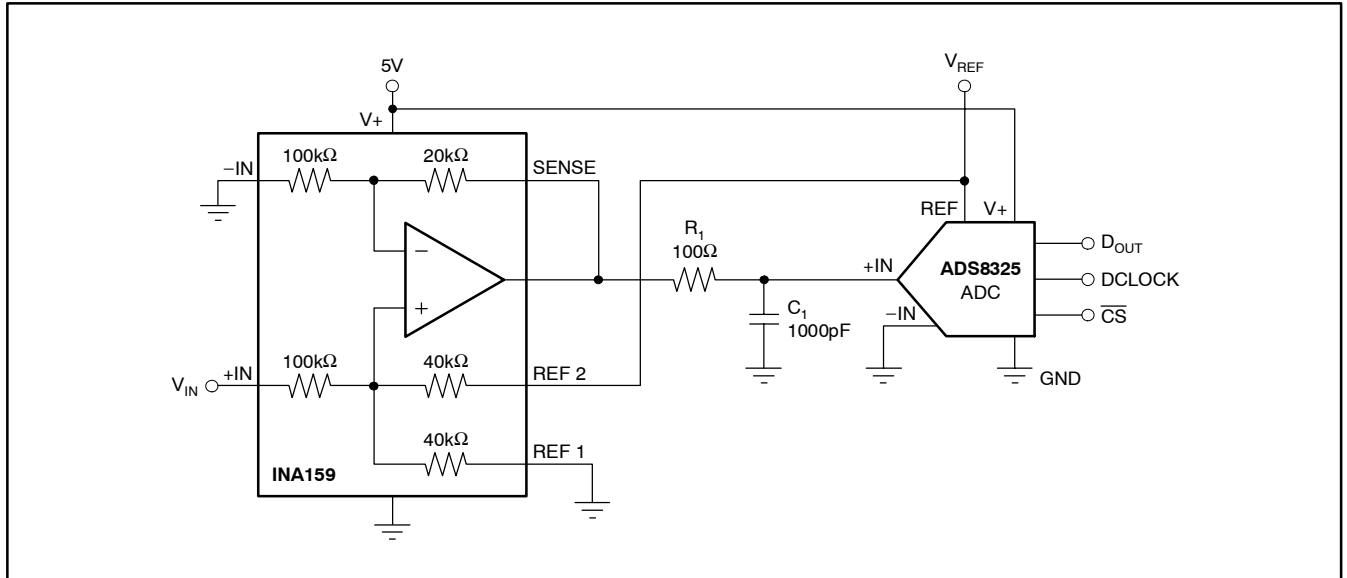
Some typical values are shown in Table 1.

**Table 1. Common-Mode Range For Various Supply and Reference Voltages**

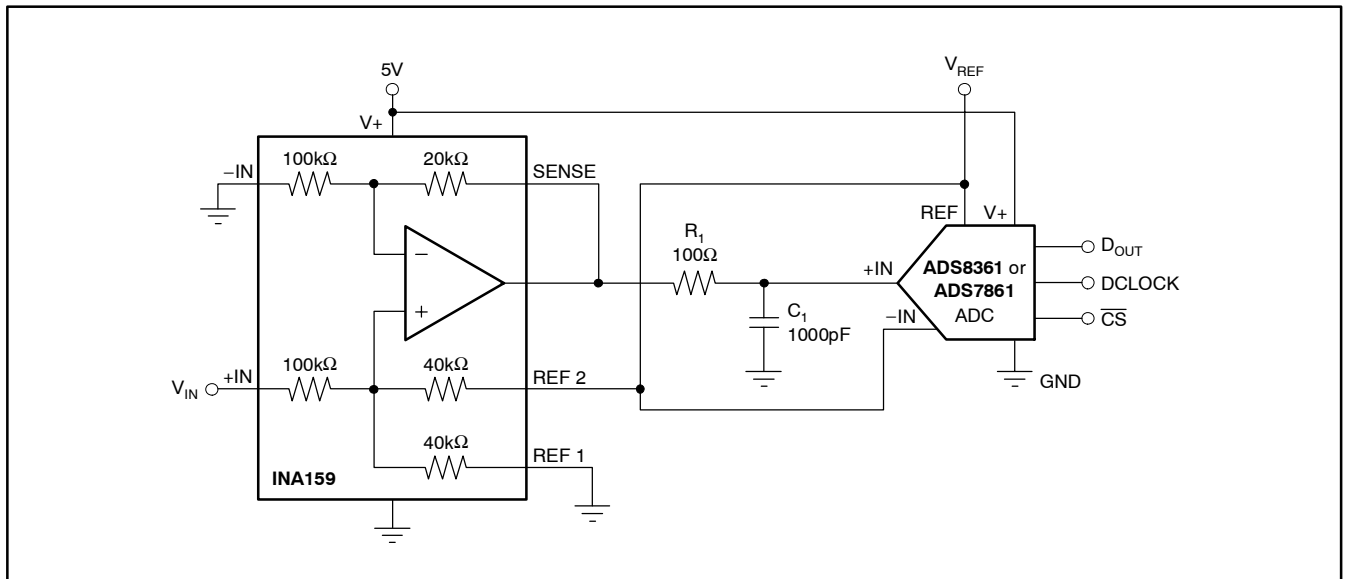
| REF 1 and REF 2 Connected Together |    |                  |                  |                  |
|------------------------------------|----|------------------|------------------|------------------|
| V+                                 | V- | V <sub>REF</sub> | V <sub>CM+</sub> | V <sub>CM-</sub> |
| 5                                  | 0  | 3                | 15               | -15              |
| 5                                  | 0  | 2.5              | 17.5             | -12.5            |
| 5                                  | 0  | 1.25             | 23.75            | -6.25            |
| 1/2 Reference Connection           |    |                  |                  |                  |
| V+                                 | V- | V <sub>REF</sub> | V <sub>CM+</sub> | V <sub>CM-</sub> |
| 5                                  | 0  | 5                | 17.5             | -12.5            |
| 5                                  | 0  | 4.096            | 19.76            | -10.24           |
| 5                                  | 0  | 2.5              | 23.75            | -6.25            |
| 3.3                                | 0  | 3.3              | 11.55            | -8.25            |
| 3.3                                | 0  | 2.5              | 13.55            | -6.25            |
| 3.3                                | 0  | 1.25             | 16.675           | -3.125           |

**Table 2. Input and Output Relationships for Various Reference and Connection Combinations**

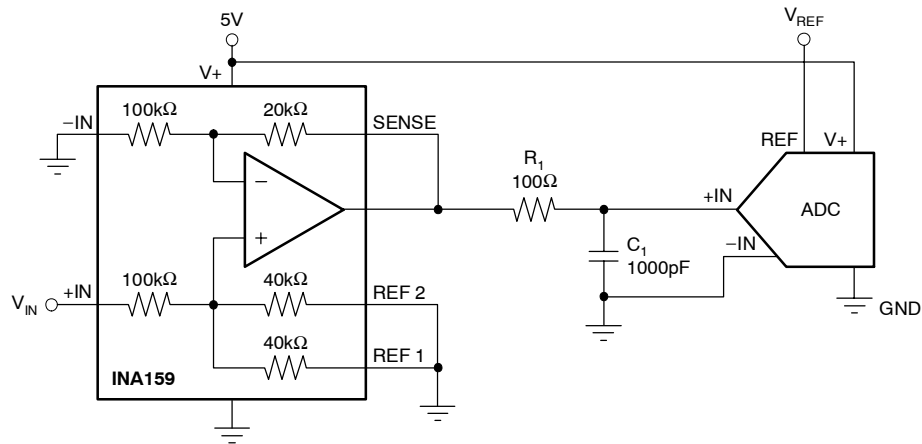
| V <sub>REF</sub> (V) | REF CONNECTION   | V <sub>OUT</sub> for V <sub>IN</sub> = 0 (V) | LINEAR V <sub>IN</sub> RANGE (V)   | USEFUL V <sub>OUT</sub> SWING (V)     |
|----------------------|--|--|------------------------------------|---------------------------------------|
| 5                    |   | 2.5  | +10<br>0<br>-10                    | 4.5<br>(±2V swing)<br>0.5             |
| 4.096                |  | 2.048  | +10<br>0<br>-10                    | 4.048<br>(±2V swing)<br>0.048         |
| 3.3                  |  | 1.65   | +10<br>0<br>-7.885                 | 3.65<br>(-1.577V, +2V swing)<br>0.048 |
| 2.5                  |  | 1.25   | +10 (also +5)<br>0<br>-6 (also -5) | 3.25<br>(-1.2V, +2V swing)<br>0.048   |
| 1.8                  |  | 0.9  | +10<br>0<br>-4.26                  | 2.9<br>(-0.852V, +2V swing)<br>0.048  |
| 2.5                  |  | 2.5  | +10<br>0<br>-10                    | 4.5<br>(±2V swing)<br>0.5             |
| 1.8                  |  | 1.8  | +10<br>0<br>-8.76                  | 3.8<br>(-1.752V, +2V swing)<br>0.048  |
| 1.2                  |  | 1.2  | +10<br>0<br>-5.76                  | 3.2<br>(-1.15V, +2V swing)<br>0.048   |



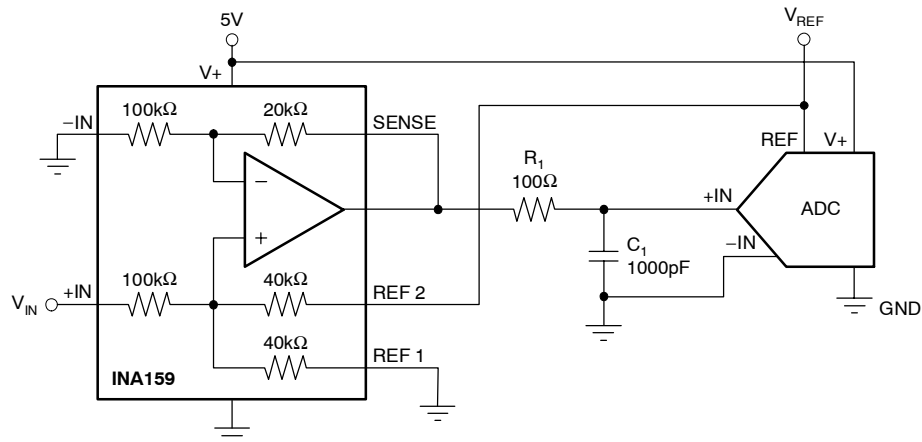
**Figure 3. Typical Application Circuit Interfacing to Medium-Speed, Single-Supply ADCs**



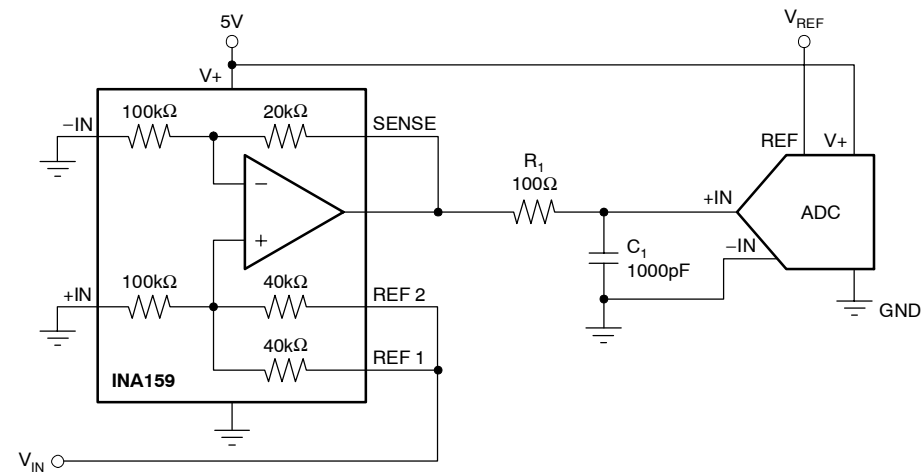
**Figure 4. Typical Application Circuit Interfacing to Medium-Speed, Single-Supply ADCs with Pseudo-Differential Inputs (such as the ADS7861 and ADS8361)**



a) Unipolar, Noninverting,  $G = 0.2$

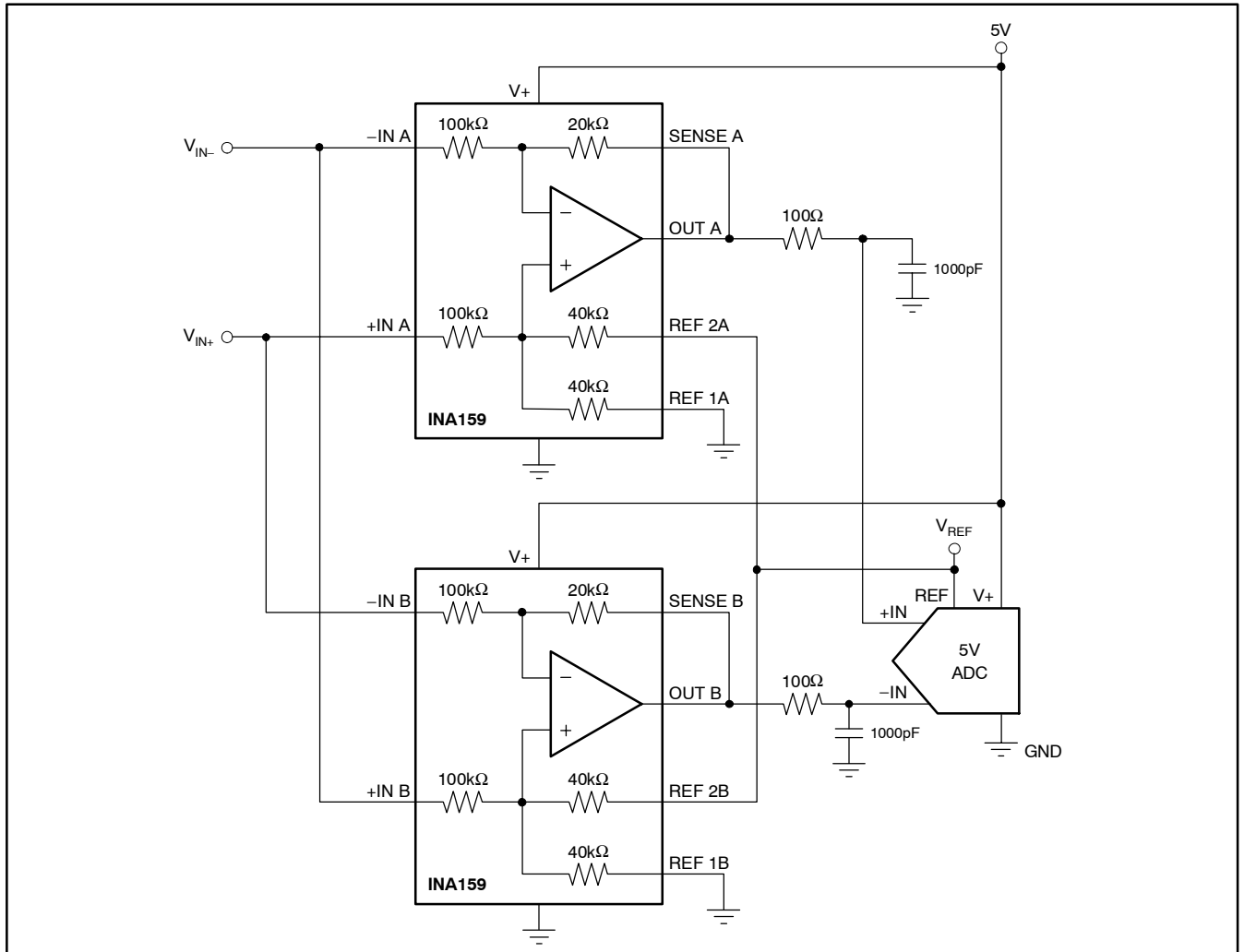


b) Bipolar, Noninverting,  $G = 0.2$



c) Unipolar, Unity Gain

Figure 5. Basic INA159 Configurations



**Figure 6. Differential ADC Drive**

**PACKAGING INFORMATION**

| Orderable Device | Status<br>(1) | Package Type | Package Drawing | Pins | Package Qty | Eco Plan<br>(2)         | Lead/Ball Finish<br>(6)    | MSL Peak Temp<br>(3) | Op Temp (°C) | Device Marking<br>(4/5) | Samples                 |
|------------------|---------------|--------------|-----------------|------|-------------|-------------------------|----------------------------|----------------------|--------------|-------------------------|-------------------------|
| INA159AIDGKR     | ACTIVE        | VSSOP        | DGK             | 8    | 2500        | Green (RoHS & no Sb/Br) | CU NIPDAU  <br>CU NIPDAUAG | Level-1-260C-UNLIM   | -40 to 125   | CJB                     | <a href="#">Samples</a> |
| INA159AIDGKRG4   | ACTIVE        | VSSOP        | DGK             | 8    | 2500        | Green (RoHS & no Sb/Br) | CU NIPDAUAG                | Level-1-260C-UNLIM   | -40 to 125   | CJB                     | <a href="#">Samples</a> |
| INA159AIDGKT     | ACTIVE        | VSSOP        | DGK             | 8    | 250         | Green (RoHS & no Sb/Br) | CU NIPDAU  <br>CU NIPDAUAG | Level-1-260C-UNLIM   | -40 to 125   | CJB                     | <a href="#">Samples</a> |
| INA159AIDGKTG4   | ACTIVE        | VSSOP        | DGK             | 8    | 250         | Green (RoHS & no Sb/Br) | CU NIPDAUAG                | Level-1-260C-UNLIM   | -40 to 125   | CJB                     | <a href="#">Samples</a> |

(1) The marketing status values are defined as follows:

**ACTIVE:** Product device recommended for new designs.

**LIFEBUY:** TI has announced that the device will be discontinued, and a lifetime-buy period is in effect.

**NRND:** Not recommended for new designs. Device is in production to support existing customers, but TI does not recommend using this part in a new design.

**PREVIEW:** Device has been announced but is not in production. Samples may or may not be available.

**OBSOLETE:** TI has discontinued the production of the device.

(2) **RoHS:** TI defines "RoHS" to mean semiconductor products that are compliant with the current EU RoHS requirements for all 10 RoHS substances, including the requirement that RoHS substance do not exceed 0.1% by weight in homogeneous materials. Where designed to be soldered at high temperatures, "RoHS" products are suitable for use in specified lead-free processes. TI may reference these types of products as "Pb-Free".

**RoHS Exempt:** TI defines "RoHS Exempt" to mean products that contain lead but are compliant with EU RoHS pursuant to a specific EU RoHS exemption.

**Green:** TI defines "Green" to mean the content of Chlorine (Cl) and Bromine (Br) based flame retardants meet JS709B low halogen requirements of <=1000ppm threshold. Antimony trioxide based flame retardants must also meet the <=1000ppm threshold requirement.

(3) MSL, Peak Temp. - The Moisture Sensitivity Level rating according to the JEDEC industry standard classifications, and peak solder temperature.

(4) There may be additional marking, which relates to the logo, the lot trace code information, or the environmental category on the device.

(5) Multiple Device Markings will be inside parentheses. Only one Device Marking contained in parentheses and separated by a "-" will appear on a device. If a line is indented then it is a continuation of the previous line and the two combined represent the entire Device Marking for that device.

(6) Lead/Ball Finish - Orderable Devices may have multiple material finish options. Finish options are separated by a vertical ruled line. Lead/Ball Finish values may wrap to two lines if the finish value exceeds the maximum column width.

**Important Information and Disclaimer:**The information provided on this page represents TI's knowledge and belief as of the date that it is provided. TI bases its knowledge and belief on information provided by third parties, and makes no representation or warranty as to the accuracy of such information. Efforts are underway to better integrate information from third parties. TI has taken and

continues to take reasonable steps to provide representative and accurate information but may not have conducted destructive testing or chemical analysis on incoming materials and chemicals. TI and TI suppliers consider certain information to be proprietary, and thus CAS numbers and other limited information may not be available for release.

In no event shall TI's liability arising out of such information exceed the total purchase price of the TI part(s) at issue in this document sold by TI to Customer on an annual basis.

**OTHER QUALIFIED VERSIONS OF INA159 :**

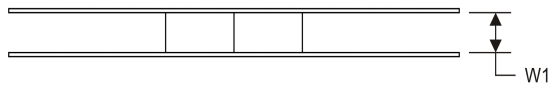
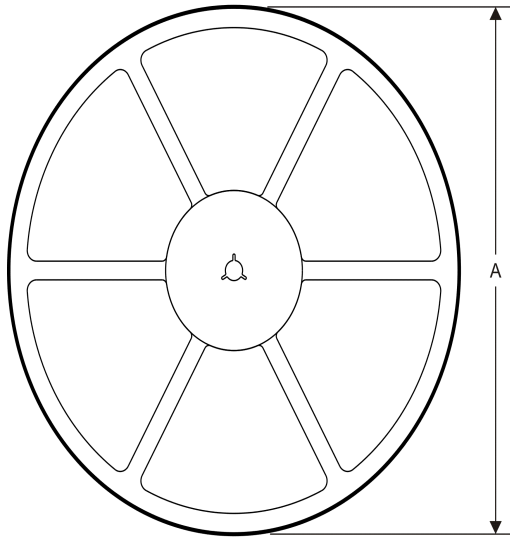
- Enhanced Product: [INA159-EP](#)

**NOTE: Qualified Version Definitions:**

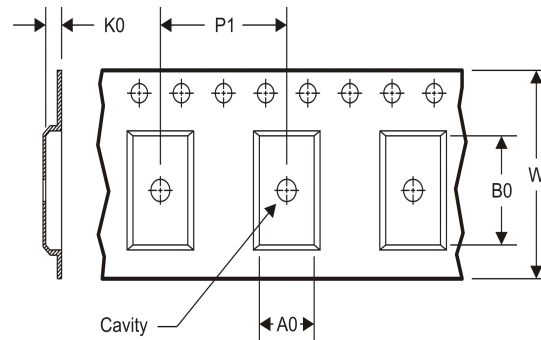
- Enhanced Product - Supports Defense, Aerospace and Medical Applications

**TAPE AND REEL INFORMATION**

**REEL DIMENSIONS**



**TAPE DIMENSIONS**



|    |   |
|----|---|
| A0 | Dimension designed to accommodate the component width     |
| B0 | Dimension designed to accommodate the component length    |
| K0 | Dimension designed to accommodate the component thickness |
| W  | Overall width of the carrier tape                         |
| P1 | Pitch between successive cavity centers                   |

**TAPE AND REEL INFORMATION**

\*All dimensions are nominal

| Device       | Package Type | Package Drawing | Pins | SPQ  | Reel Diameter (mm) | Reel Width W1 (mm) | A0 (mm) | B0 (mm) | K0 (mm) | P1 (mm) | W (mm) | Pin1 Quadrant |
|--------------|--------------|-----------------|------|------|--------------------|--------------------|---------|---------|---------|---------|--------|---------------|
| INA159AIDGKR | VSSOP        | DGK             | 8    | 2500 | 330.0              | 12.4               | 5.3     | 3.4     | 1.4     | 8.0     | 12.0   | Q1            |
| INA159AIDGKT | VSSOP        | DGK             | 8    | 250  | 180.0              | 12.4               | 5.3     | 3.4     | 1.4     | 8.0     | 12.0   | Q1            |

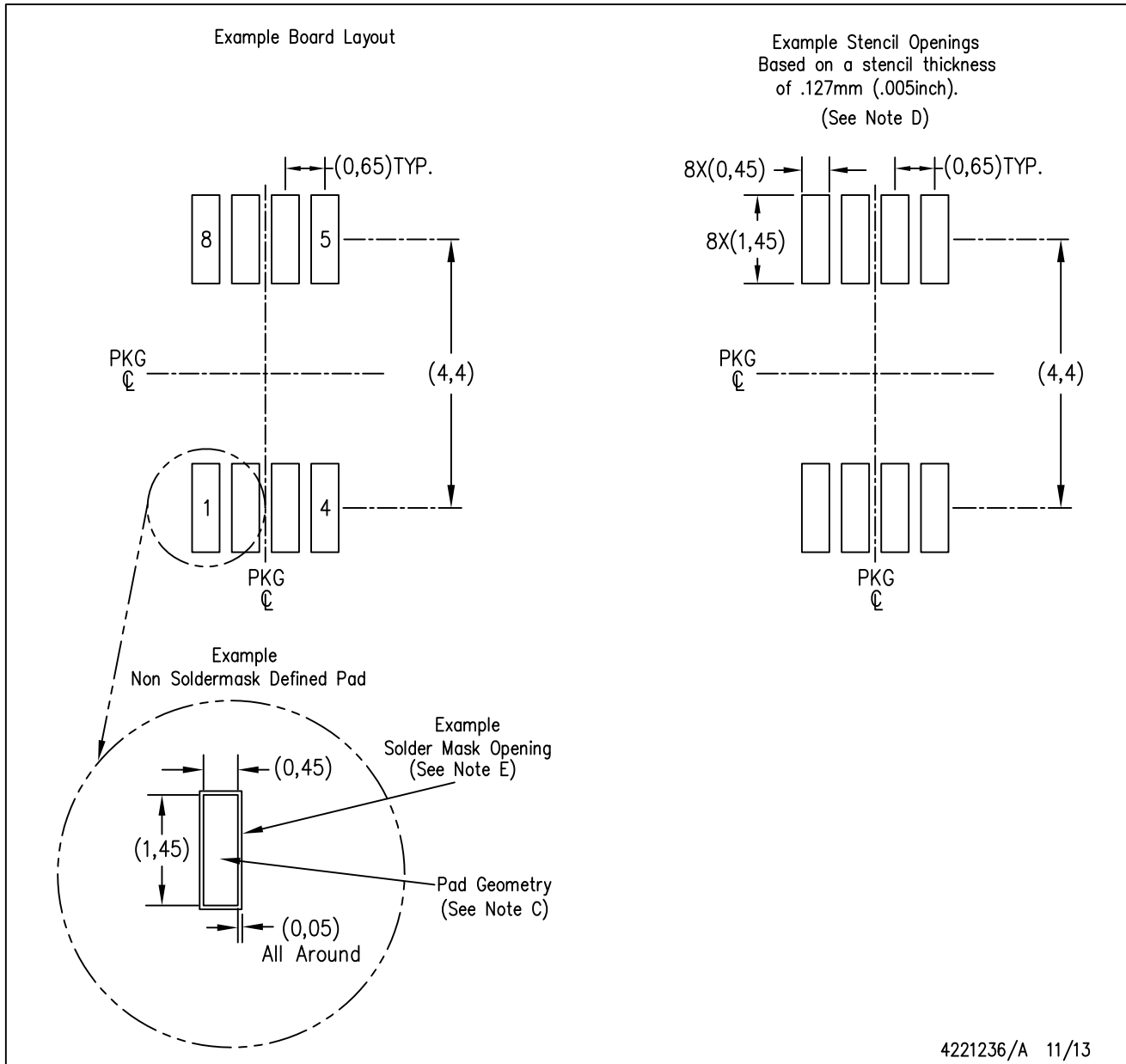
TAPE AND REEL BOX DIMENSIONS



\*All dimensions are nominal

| Device       | Package Type | Package Drawing | Pins | SPQ  | Length (mm) | Width (mm) | Height (mm) |
|--------------|--------------|-----------------|------|------|-------------|------------|-------------|
| INA159AIDGKR | VSSOP        | DGK             | 8    | 2500 | 367.0       | 367.0      | 35.0        |
| INA159AIDGKT | VSSOP        | DGK             | 8    | 250  | 210.0       | 185.0      | 35.0        |





- NOTES:
- A. All linear dimensions are in millimeters.
  - B. This drawing is subject to change without notice.
  - C. Publication IPC-7351 is recommended for alternate designs.
  - D. Laser cutting apertures with trapezoidal walls and also rounding corners will offer better paste release. Customers should contact their board assembly site for stencil design recommendations. Refer to IPC-7525 for other stencil recommendations.
  - E. Customers should contact their board fabrication site for solder mask tolerances between and around signal pads.

## IMPORTANT NOTICE

Texas Instruments Incorporated (TI) reserves the right to make corrections, enhancements, improvements and other changes to its semiconductor products and services per JESD46, latest issue, and to discontinue any product or service per JESD48, latest issue. Buyers should obtain the latest relevant information before placing orders and should verify that such information is current and complete.

TI's published terms of sale for semiconductor products (<http://www.ti.com/sc/docs/stdterms.htm>) apply to the sale of packaged integrated circuit products that TI has qualified and released to market. Additional terms may apply to the use or sale of other types of TI products and services.

Reproduction of significant portions of TI information in TI data sheets is permissible only if reproduction is without alteration and is accompanied by all associated warranties, conditions, limitations, and notices. TI is not responsible or liable for such reproduced documentation. Information of third parties may be subject to additional restrictions. Resale of TI products or services with statements different from or beyond the parameters stated by TI for that product or service voids all express and any implied warranties for the associated TI product or service and is an unfair and deceptive business practice. TI is not responsible or liable for any such statements.

Buyers and others who are developing systems that incorporate TI products (collectively, "Designers") understand and agree that Designers remain responsible for using their independent analysis, evaluation and judgment in designing their applications and that Designers have full and exclusive responsibility to assure the safety of Designers' applications and compliance of their applications (and of all TI products used in or for Designers' applications) with all applicable regulations, laws and other applicable requirements. Designer represents that, with respect to their applications, Designer has all the necessary expertise to create and implement safeguards that (1) anticipate dangerous consequences of failures, (2) monitor failures and their consequences, and (3) lessen the likelihood of failures that might cause harm and take appropriate actions. Designer agrees that prior to using or distributing any applications that include TI products, Designer will thoroughly test such applications and the functionality of such TI products as used in such applications.

TI's provision of technical, application or other design advice, quality characterization, reliability data or other services or information, including, but not limited to, reference designs and materials relating to evaluation modules, (collectively, "TI Resources") are intended to assist designers who are developing applications that incorporate TI products; by downloading, accessing or using TI Resources in any way, Designer (individually or, if Designer is acting on behalf of a company, Designer's company) agrees to use any particular TI Resource solely for this purpose and subject to the terms of this Notice.

TI's provision of TI Resources does not expand or otherwise alter TI's applicable published warranties or warranty disclaimers for TI products, and no additional obligations or liabilities arise from TI providing such TI Resources. TI reserves the right to make corrections, enhancements, improvements and other changes to its TI Resources. TI has not conducted any testing other than that specifically described in the published documentation for a particular TI Resource.

Designer is authorized to use, copy and modify any individual TI Resource only in connection with the development of applications that include the TI product(s) identified in such TI Resource. NO OTHER LICENSE, EXPRESS OR IMPLIED, BY ESTOPPEL OR OTHERWISE TO ANY OTHER TI INTELLECTUAL PROPERTY RIGHT, AND NO LICENSE TO ANY TECHNOLOGY OR INTELLECTUAL PROPERTY RIGHT OF TI OR ANY THIRD PARTY IS GRANTED HEREIN, including but not limited to any patent right, copyright, mask work right, or other intellectual property right relating to any combination, machine, or process in which TI products or services are used. Information regarding or referencing third-party products or services does not constitute a license to use such products or services, or a warranty or endorsement thereof. Use of TI Resources may require a license from a third party under the patents or other intellectual property of the third party, or a license from TI under the patents or other intellectual property of TI.

TI RESOURCES ARE PROVIDED "AS IS" AND WITH ALL FAULTS. TI DISCLAIMS ALL OTHER WARRANTIES OR REPRESENTATIONS, EXPRESS OR IMPLIED, REGARDING RESOURCES OR USE THEREOF, INCLUDING BUT NOT LIMITED TO ACCURACY OR COMPLETENESS, TITLE, ANY EPIDEMIC FAILURE WARRANTY AND ANY IMPLIED WARRANTIES OF MERCHANTABILITY, FITNESS FOR A PARTICULAR PURPOSE, AND NON-INFRINGEMENT OF ANY THIRD PARTY INTELLECTUAL PROPERTY RIGHTS. TI SHALL NOT BE LIABLE FOR AND SHALL NOT DEFEND OR INDEMNIFY DESIGNER AGAINST ANY CLAIM, INCLUDING BUT NOT LIMITED TO ANY INFRINGEMENT CLAIM THAT RELATES TO OR IS BASED ON ANY COMBINATION OF PRODUCTS EVEN IF DESCRIBED IN TI RESOURCES OR OTHERWISE. IN NO EVENT SHALL TI BE LIABLE FOR ANY ACTUAL, DIRECT, SPECIAL, COLLATERAL, INDIRECT, PUNITIVE, INCIDENTAL, CONSEQUENTIAL OR EXEMPLARY DAMAGES IN CONNECTION WITH OR ARISING OUT OF TI RESOURCES OR USE THEREOF, AND REGARDLESS OF WHETHER TI HAS BEEN ADVISED OF THE POSSIBILITY OF SUCH DAMAGES.

Unless TI has explicitly designated an individual product as meeting the requirements of a particular industry standard (e.g., ISO/TS 16949 and ISO 26262), TI is not responsible for any failure to meet such industry standard requirements.

Where TI specifically promotes products as facilitating functional safety or as compliant with industry functional safety standards, such products are intended to help enable customers to design and create their own applications that meet applicable functional safety standards and requirements. Using products in an application does not by itself establish any safety features in the application. Designers must ensure compliance with safety-related requirements and standards applicable to their applications. Designer may not use any TI products in life-critical medical equipment unless authorized officers of the parties have executed a special contract specifically governing such use. Life-critical medical equipment is medical equipment where failure of such equipment would cause serious bodily injury or death (e.g., life support, pacemakers, defibrillators, heart pumps, neurostimulators, and implantables). Such equipment includes, without limitation, all medical devices identified by the U.S. Food and Drug Administration as Class III devices and equivalent classifications outside the U.S.

TI may expressly designate certain products as completing a particular qualification (e.g., Q100, Military Grade, or Enhanced Product). Designers agree that it has the necessary expertise to select the product with the appropriate qualification designation for their applications and that proper product selection is at Designers' own risk. Designers are solely responsible for compliance with all legal and regulatory requirements in connection with such selection.

Designer will fully indemnify TI and its representatives against any damages, costs, losses, and/or liabilities arising out of Designer's non-compliance with the terms and provisions of this Notice.

## Looking for pricing, stock, or lifecycle information?

Click below to explore more details on WIN SOURCE:

 [View INA159AIDGKRG4](#) on WIN SOURCE

 [Texas Instruments](#) Information

## Optimize Your Supply Chain with WIN SOURCE Solutions

-  Global Sourcing Solution
-  Obsolete Management
-  Cost Control Management
-  Shortage Management
-  Alternative Solution
-  Excess Inventory Management