



General-Purpose CMOS Analog Switches

IH5040-IH5045/IH5047

General Description

The IH5040 family consists of seven CMOS analog switches that are intended for general-purpose applications. These switches are latch-up proof, break-before-make single, dual, and quad versions of the popular switch formats SPST, SPDT, DPST, and 4PST. Key features of the family include a low, 1nA leakage current and a quiescent current of less than 1µA.

Maxim's IH5040 family has faster switching times than the original manufacturer's devices. All devices are bidirectional and maintain almost constant on resistance throughout their operating range. These switches are guaranteed to operate from ±4.5V to ±18V, and will switch input signals that include the supplies.

Applications

- PBX, PABX
- Guidance and Control Systems
- Test Equipment
- Sample-and-Holds
- Military Radios

Features

- ◆ Improved Second Source
- ◆ Guaranteed ±4.5V to ±18V Operation
- ◆ Input Voltage Range Includes Supplies
- ◆ Latchup-Proof Construction
- ◆ TTL/CMOS Logic Compatible
- ◆ >1µA Quiescent Current
- ◆ Monolithic, Low-Power CMOS Design

Ordering Information

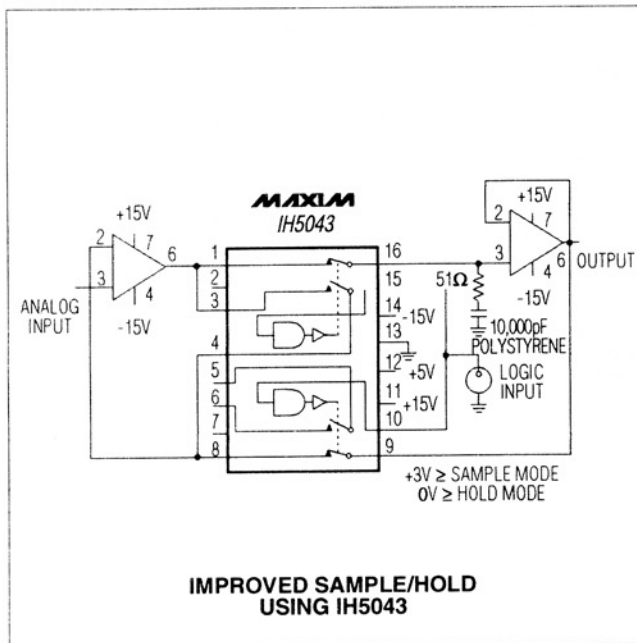
| PART | TEMP. RANGE | PIN-PACKAGE |
|---|-----------------|----------------|
| SINGLE POLE, SINGLE THROW (SPST) | | |
| IH5040CPE | 0°C to +70°C | 16 Plastic DIP |
| IH5040CWE | 0°C to +70°C | 16 Wide SO |
| IH5040 CJE | 0°C to +70°C | 16 CERDIP |
| IH5040C/D | 0°C to +70°C | Dice* |
| IH5040MJE | -55°C to +125°C | 16 CERDIP** |

Ordering Information continued at end of data sheet.

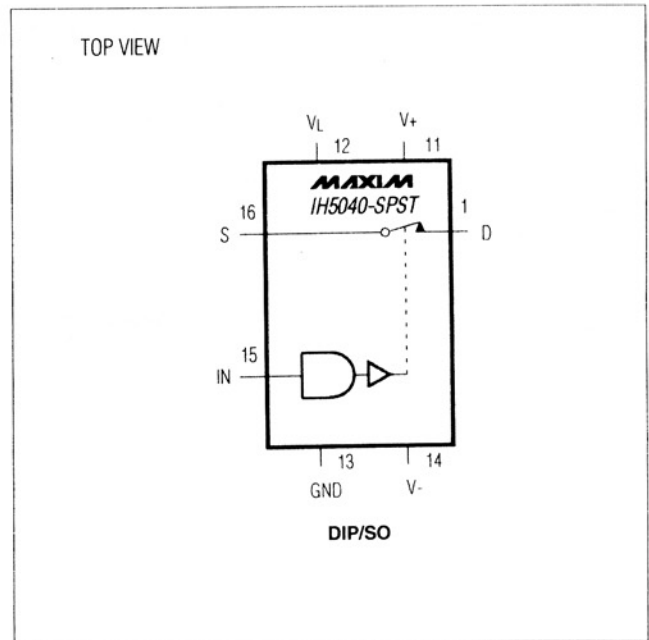
* Contact factory for dice specifications.

** Contact factory for availability and processing to MIL-STD-883.

Typical Operating Circuit



Pin Configurations & Switching-State Diagrams



General-Purpose CMOS Analog Switches

ABSOLUTE MAXIMUM RATINGS

| | | | |
|---|---------------------------|---|-----------------|
| V+ to V- | 44V | Continuous Power Dissipation (T _A = +70°C) | |
| V+ to V _D | 30V | Plastic DIP (derate 10.53mW/°C above +70°C) | 842mW |
| V _D to V- | 30V | Wide SO (derate 9.52mW/°C above +70°C) | 762mW |
| V _D to V _S | ±22V | CERDIP (derate 10.00mW/°C above +70°C) | 800mW |
| V _L to V- | 33V | TO-100 (derate 6.67mW/°C above +70°C) | 533mW |
| V _L to V _{IN} | 30V | Operating Temperature Ranges: | |
| V _L to GND | 20V | IH504_C_ | 0°C to +70°C |
| V _{IN} to GND | 20V | IH504_M_ | -55°C to +125°C |
| Digital Inputs | (V+ + 0.3V) to (V+ - 44V) | Storage Temperature Range | -65°C to +150°C |
| V _S or V _D (Note 1) | -0.3V to (V+ + 0.3V) | Lead Temperature (soldering, 10sec) | +300°C |
| Current (any terminal) | 30mA | | |

Note 1: Signals on S, D, and digital inputs that exceed V- or V+ will be clamped by internal diodes. Limit forward diode current to 30mA maximum.

Stresses beyond those listed under "Absolute Maximum Ratings" may cause permanent damage to the device. These are stress ratings only, and functional operation of the device at these or any other conditions beyond those indicated in the operational sections of the specifications is not implied. Exposure to absolute maximum rating conditions for extended periods may affect device reliability.

ELECTRICAL CHARACTERISTICS

(V+ = 15V, V- = -15V, V_L = 5V, T_A = +25°C, unless otherwise noted.)

| PARAMETER | SYMBOL | CONDITIONS | IH504_M | | | IH504_C | | | UNITS | |
|--|-------------------------------------|--|-----------------------------------|------|-----|---------|------|-----|-------|----|
| | | | MIN | TYP | MAX | MIN | TYP | MAX | | |
| Input Logic Current | I _{IN(ON)} | V _{IN} = 2.4V | T _A = +25°C | -1 | | 1 | -1 | | 1 | μA |
| | | | T _A = T _{MAX} | -10 | | 10 | -10 | | 10 | |
| | I _{IN(OFF)} | V _{IN} = 0.8V | T _A = +25°C | -1 | | 1 | -1 | | 1 | |
| | | | T _A = T _{MAX} | -10 | | 10 | -10 | | 10 | |
| Input Logic Low | V _{IL} | T _A = T _{MIN} to T _{MAX} | | | 0.8 | | | 0.8 | V | |
| Input Logic High | V _{IH} | T _A = T _{MIN} to T _{MAX} | 2.4 | | | 2.4 | | | V | |
| Drain-Source On Resistance | r _{DS(ON)} | I _S = 10mA, V _{ANALOG} = -10V to 10V | T _A = +25°C | | | 75 | | | 80 | Ω |
| | | | T _A = T _{MAX} | | | 150 | | | 130 | |
| Channel-to-Channel r _{DS(ON)} Match | Δr _{DS(ON)} | | | 3 | | | 5 | | Ω | |
| Minimum Analog-Signal Handling Capability | V _{ANALOG} | | -15 | | 15 | -15 | | 15 | V | |
| Switch-Off Leakage Current | I _D /I _{S(OFF)} | V _{ANALOG} = -10V to 10V | T _A = +25°C | -1 | | 1 | -5 | | 5 | nA |
| | | | T _A = T _{MAX} | -100 | | 100 | -100 | | 100 | |

General-Purpose CMOS Analog Switches

IH5040-IH5045/IH5047

ELECTRICAL CHARACTERISTICS (continued)

(V+ = 15V, V- = -15V, VL = 5V, TA = +25°C, unless otherwise noted.)

| PARAMETER | SYMBOL | CONDITIONS | IH504_M | | | IH504_C | | | UNITS |
|---|--------|--------------------------|------------|------|-----|---------|-----|-----|-------|
| | | | MIN | TYP | MAX | MIN | TYP | MAX | |
| Switch-On Leakage Current | ID(ON) | VD = VS = -10V to 10V | TA = +25°C | -2 | 2 | -10 | 10 | nA | |
| | | | TA = TMAX | -200 | 200 | -100 | 100 | | |
| Switch-On Time | tON | Figure 1 | | 400 | | 400 | ns | | |
| Switch-Off Time | tOFF | Figure 1 | | 200 | | 200 | ns | | |
| Charge Injection | Q(INJ) | Figure 2 (Note 2) | | 15 | | 20 | mV | | |
| Minimum Off-Isolation Rejection Ratio | OIRR | Figure 3, CL < 5pF | | 54 | | 50 | dB | | |
| V+ Quiescent Current | I+Q | VIN = 0V and 5V | TA = +25°C | | 1 | | 10 | μA | |
| | | | TA = TMAX | | 10 | | 100 | | |
| V- Quiescent Current | I-Q | VIN = 0V and 5V | TA = +25°C | -1 | | -10 | μA | | |
| | | | TA = TMAX | -10 | | -100 | | | |
| VL Quiescent Current | ILQ | VIN = 0V and 5V | TA = +25°C | | 1 | | 10 | μA | |
| | | | TA = TMAX | | 10 | | 100 | | |
| Ground Quiescent Current | IGND | VIN = 0V and 5V | TA = +25°C | -1 | | -10 | μA | | |
| | | | TA = TMAX | -10 | | -100 | | | |
| Minimum Channel-to-Channel Cross-Coupling Rejection Ratio | CCRR | One channel off (Note 2) | | 54 | | 50 | dB | | |
| Power-Supply Range for Continuous Operation | VOP | (Notes 2, 3) | | ±4.5 | ±18 | ±4.5 | ±18 | V | |

Note 2: Not production tested.

Note 3: Electrical characteristics, such as on resistance, will change when power supplies other than ±15V are used.

Test Circuits

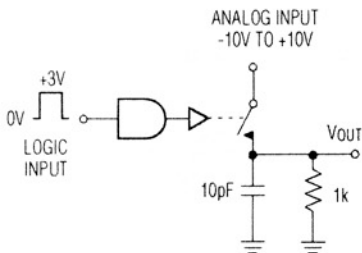


Figure 1. Switching Time

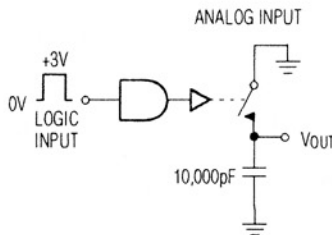


Figure 2. Charge Injection

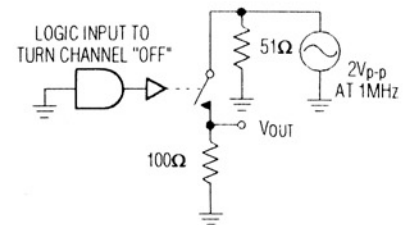


Figure 3. Off-Isolation Rejection Ratio

General-Purpose CMOS Analog Switches

Pin Configurations & Switching-State Diagrams (continued)

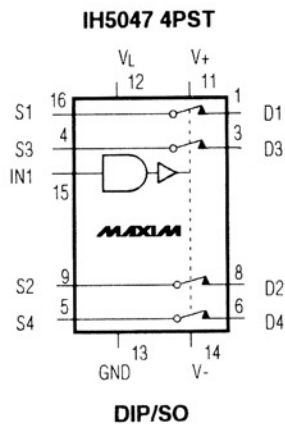
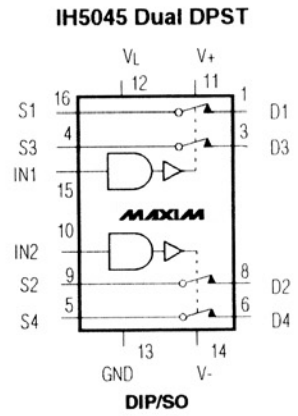
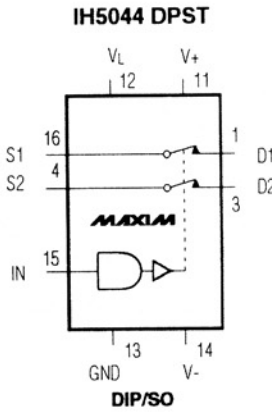
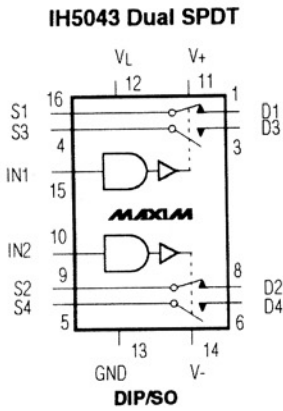
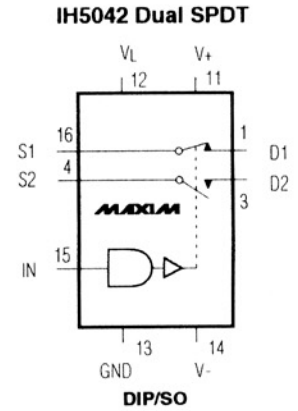
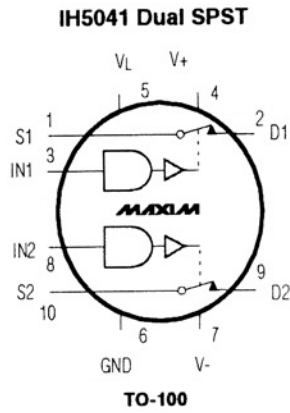
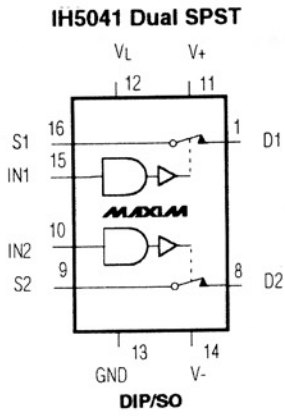
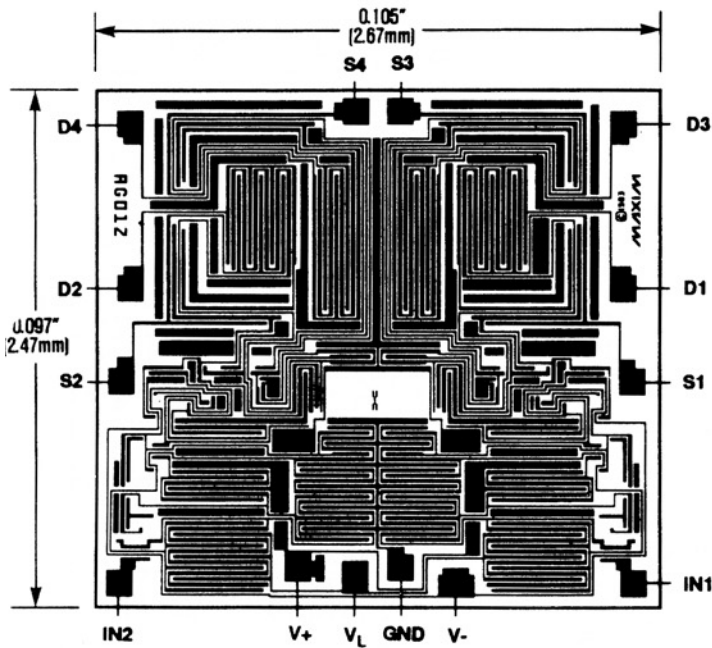


Table 1. Using the IH5040 Family with Only Two Supplies

| SUPPLY VOLTAGES (V) | MINIMUM LOGIC I/P FOR "1" STATE (V) |
|---------------------|-------------------------------------|
| ±15 | 12.6 |
| ±12 | 9.6 |
| ±10 | 7.6 |
| ±5 | 2.6 |

General-Purpose CMOS Analog Switches

Chip Topography



Ordering Information (continued)

| PART | TEMP. RANGE | PIN-PACKAGE |
|--|-----------------|----------------|
| DUAL, SINGLE POLE, SINGLE THROW (DUAL SPST) | | |
| IH5041CPE | 0°C to +70°C | 16 Plastic DIP |
| IH5041CWE | 0°C to +70°C | 16 Wide SO |
| IH5041CJE | 0°C to +70°C | 16 Cerdip |
| IH5041CTW | 0°C to +70°C | 16 TO-100† |
| IH5041C/D | 0°C to +70°C | Dice* |
| IH5041MJE | -55°C to +125°C | 16 Cerdip** |
| IH5041MTW | -55°C to +125°C | 16 TO-100† |
| SINGLE POLE, DOUBLE THROW (SPDT) | | |
| IH5042CPE | 0°C to +70°C | 16 Plastic DIP |
| IH5042CWE | 0°C to +70°C | 16 Wide SO |
| IH5042CJE | 0°C to +70°C | 16 Cerdip |
| IH5042C/D | 0°C to +70°C | Dice* |
| IH5042MJE | -55°C to +125°C | 16 Cerdip** |
| DUAL, SINGLE POLE, DOUBLE THROW (DUAL SPDT) | | |
| IH5043CPE | 0°C to +70°C | 16 Plastic DIP |
| IH5043CWE | 0°C to +70°C | 16 Wide SO |
| IH5043CJE | 0°C to +70°C | 16 Cerdip |
| IH5043C/D | 0°C to +70°C | Dice* |
| IH5043MJE | -55°C to +125°C | 16 Cerdip** |
| DOUBLE POLE, SINGLE THROW (DPST) | | |
| IH5044CPE | 0°C to +70°C | 16 Plastic DIP |
| IH5044CWE | 0°C to +70°C | 16 Wide SO |
| IH5044CJE | 0°C to +70°C | 16 Cerdip |
| IH5044C/D | 0°C to +70°C | Dice* |
| IH5044MJE | -55°C to +125°C | 16 Cerdip** |
| DUAL, DOUBLE POLE, SINGLE THROW (DUAL DPST) | | |
| IH5045CPE | 0°C to +70°C | 16 Plastic DIP |
| IH5045CWE | 0°C to +70°C | 16 Wide SO |
| IH5045CJE | 0°C to +70°C | 16 Cerdip |
| IH5045C/D | 0°C to +70°C | Dice* |
| IH5045MJE | -55°C to +125°C | 16 Cerdip** |
| QUAD POLE, SINGLE THROW (4PST) | | |
| IH5047CPE | 0°C to +70°C | 16 Plastic DIP |
| IH5047CWE | 0°C to +70°C | 16 Wide SO |
| IH5047CJE | 0°C to +70°C | 16 Cerdip |
| IH5047C/D | 0°C to +70°C | Dice* |
| IH5047MJE | -55°C to +125°C | 16 Cerdip** |

* Contact factory for dice specifications.

** Contact factory for availability and processing to MIL-STD-883.

† Contact factory for availability.

IH5040-IH5045/IH5047

General-Purpose CMOS Analog Switches

Package Information

(The package drawing(s) in this data sheet may not reflect the most current specifications. For the latest package outline information go to www.maxim-ic.com/packages.)

**Plastic DIP
PLASTIC
DUAL-IN-LINE
PACKAGE
(0.300 in.)**

| DIM | INCHES | | MILLIMETERS | |
|-----|--------|-------|-------------|-------|
| | MIN | MAX | MIN | MAX |
| A | — | 0.200 | — | 5.08 |
| A1 | 0.015 | — | 0.38 | — |
| A2 | 0.125 | 0.175 | 3.18 | 4.45 |
| A3 | 0.055 | 0.080 | 1.40 | 2.03 |
| B | 0.016 | 0.022 | 0.41 | 0.56 |
| B1 | 0.045 | 0.065 | 1.14 | 1.65 |
| C | 0.008 | 0.012 | 0.20 | 0.30 |
| D1 | 0.005 | 0.080 | 0.13 | 2.03 |
| E | 0.300 | 0.325 | 7.62 | 8.26 |
| E1 | 0.240 | 0.310 | 6.10 | 7.87 |
| e | 0.100 | — | 2.54 | — |
| eA | 0.300 | — | 7.62 | — |
| eB | — | 0.400 | — | 10.16 |
| L | 0.115 | 0.150 | 2.92 | 3.81 |

| PKG. | DIM | PINS | INCHES | | MILLIMETERS | |
|------|-----|------|--------|-------|-------------|-------|
| | | | MIN | MAX | MIN | MAX |
| P | D | 8 | 0.348 | 0.390 | 8.84 | 9.91 |
| P | D | 14 | 0.735 | 0.765 | 18.67 | 19.43 |
| P | D | 16 | 0.745 | 0.765 | 18.92 | 19.43 |
| P | D | 18 | 0.885 | 0.915 | 22.48 | 23.24 |
| P | D | 20 | 1.015 | 1.045 | 25.78 | 26.54 |
| N | D | 24 | 1.14 | 1.265 | 28.96 | 32.13 |

21-0043A

**Wide SO
SMALL-OUTLINE
PACKAGE
(0.300 in.)**

| DIM | INCHES | | MILLIMETERS | |
|-----|--------|-------|-------------|-------|
| | MIN | MAX | MIN | MAX |
| A | 0.093 | 0.104 | 2.35 | 2.65 |
| A1 | 0.004 | 0.012 | 0.10 | 0.30 |
| B | 0.014 | 0.019 | 0.35 | 0.49 |
| C | 0.009 | 0.013 | 0.23 | 0.32 |
| E | 0.291 | 0.299 | 7.40 | 7.60 |
| e | 0.050 | | 1.27 | |
| H | 0.394 | 0.419 | 10.00 | 10.65 |
| L | 0.016 | 0.050 | 0.40 | 1.27 |

| DIM | PINS | INCHES | | MILLIMETERS | |
|-----|------|--------|-------|-------------|-------|
| | | MIN | MAX | MIN | MAX |
| D | 16 | 0.398 | 0.413 | 10.10 | 10.50 |
| D | 18 | 0.447 | 0.463 | 11.35 | 11.75 |
| D | 20 | 0.496 | 0.512 | 12.60 | 13.00 |
| D | 24 | 0.598 | 0.614 | 15.20 | 15.60 |
| D | 28 | 0.697 | 0.713 | 17.70 | 18.10 |

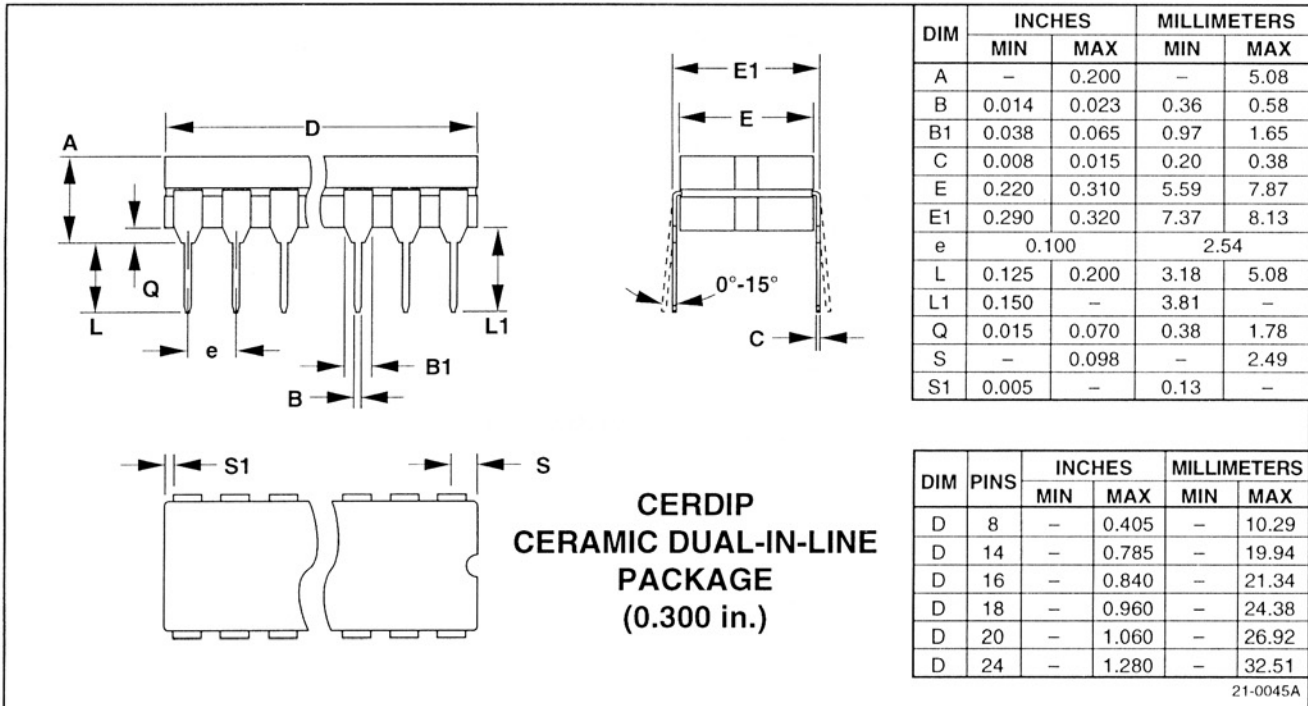
21-0042A

General-Purpose CMOS Analog Switches

Package Information (continued)

(The package drawing(s) in this data sheet may not reflect the most current specifications. For the latest package outline information go to www.maxim-ic.com/packages.)

IH5040-IH5045/IH5047



General-Purpose CMOS Analog Switches

IH5040-IH5045/IH5047

Maxim cannot assume responsibility for use of any circuitry other than circuitry entirely embodied in a Maxim product. No circuit patent licenses are implied. Maxim reserves the right to change the circuitry and specifications without notice at any time.

8 _____ **Maxim Integrated Products, 120 San Gabriel Drive, Sunnyvale, CA 94086 (408) 737-7600**

Looking for pricing, stock, or lifecycle information?

Click below to explore more details on WIN SOURCE:

 [View IH5044CPE on WIN SOURCE](#)

 [Maxim Integrated](#) Information

Optimize Your Supply Chain with WIN SOURCE Solutions

-  Global Sourcing Solution
-  Obsolete Management
-  Cost Control Management
-  Shortage Management
-  Alternative Solution
-  Excess Inventory Management