



THE DATASHEET OF G3VM-351D



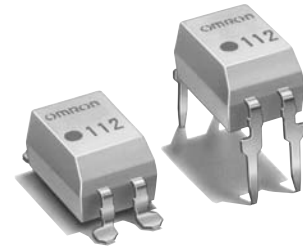
G3VM-351A/D

MOS FET Relays

General-purpose Series with 350-V Load Voltage.



- Upgraded G3VM-2 Series.
- Continuous load current of 120 mA.
- Operating time of 0.3 ms (typical).



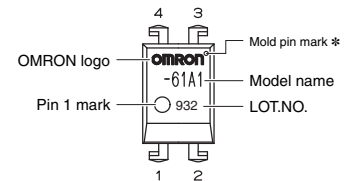
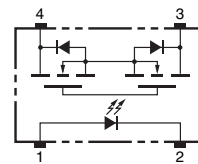
Note: The actual product is marked differently from the image shown here.

RoHS compliant

Application Examples

- Test & Measurement equipment
- Security equipment
- Amusement equipment

Terminal Arrangement/Internal Connections



Note: The actual product is marked differently from the image shown here.
* The indentation in the corner diagonally opposite from the pin 1 mark is from a pin on the mold.

List of Models

| Package type | Contact form | Terminals | Load voltage (peak value) * | Model | Minimum package quantity | |
|--------------|--------------|----------------------------|-----------------------------|----------------|--------------------------|--------------------------|
| | | | | | Number per tube | Number per tape and reel |
| DIP4 | 1a (SPST-NO) | PCB Terminals | 350 V | G3VM-351A | 100 | - |
| | | Surface-mounting Terminals | | G3VM-351D | | |
| | | | | G3VM-351D (TR) | - | 1,500 |

* The AC peak and DC value are given for the load voltage.

Absolute Maximum Ratings (Ta = 25°C)

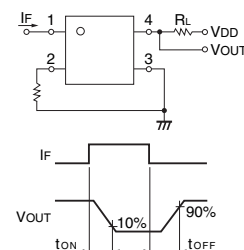
| Item | Symbol | Rating | Unit | Measurement conditions | |
|---|--------------------------------------|-------------|------|-------------------------------|-------------------------|
| Input | LED forward current | IF | 50 | mA | |
| | Repetitive peak LED forward current | IFP | 1 | A | 100 μs pulses, 100 pps |
| | LED forward current reduction rate | ΔIF/°C | -0.5 | mA/°C | Ta ≥ 25°C |
| | LED reverse voltage | VR | 5 | V | |
| Output | Connection temperature | TJ | 125 | °C | |
| | Load voltage (AC peak/DC) | VOFF | 350 | V | |
| | Continuous load current (AC peak/DC) | IO | 120 | mA | |
| | ON current reduction rate | ΔIO/°C | -1.2 | mA/°C | Ta ≥ 25°C |
| | Pulse ON current | IOP | 0.36 | A | t = 100 ms, Duty = 1/10 |
| | Connection temperature | TJ | 125 | °C | |
| Dielectric strength between I/O (See note 1.) | VI-O | 2500 | Vrms | AC for 1 min | |
| Ambient operating temperature | Ta | -40 to +85 | °C | With no icing or condensation | |
| Ambient storage temperature | Tstg | -55 to +125 | °C | With no icing or condensation | |
| Soldering temperature | - | 260 | °C | 10 s | |

Note: 1. The dielectric strength between the input and output was checked by applying voltage between all pins as a group on the LED side and all pins as a group on the light-receiving side.

Electrical Characteristics (Ta = 25°C)

| Item | Symbol | Minimum | Typical | Maximum | Unit | Measurement conditions | |
|--------|---|-------------------|---------|-----------------|------|------------------------|---|
| Input | LED forward voltage | VF | 1.0 | 1.15 | 1.3 | V | IF = 10 mA |
| | Reverse current | IR | - | - | 10 | μA | VR = 5 V |
| | Capacity between terminals | CT | - | 30 | - | pF | V = 0, f = 1 MHz |
| | Trigger LED forward current | IFT | - | 1 | 3 | mA | IO = 120 mA |
| Output | Turn-OFF LED forward current | IFC | 0.1 | - | - | mA | IOFF = 100 μA |
| | Maximum resistance with output ON | RON | - | 25 | 35 | Ω | IF = 5 mA, IO = 120 mA, t < 1 s |
| | | | - | 35 | 50 | Ω | IF = 5 mA, IO = 120 mA |
| | Current leakage when the relay is open | I _{LEAK} | - | - | 1.0 | μA | VOFF = 350 V |
| | Capacity between terminals | COFF | - | 30 | - | pF | V = 0, f = 1 MHz |
| | Capacity between I/O terminals | CI-O | - | 0.8 | - | pF | f = 1 MHz, Vs = 0 V |
| | Insulation resistance between I/O terminals | RI-O | 1000 | 10 ⁸ | - | MΩ | VI-O = 500 VDC, RoH ≤ 60% |
| | Turn-ON time | TON | - | 0.3 | 1.0 | ms | IF = 5 mA, RL = 200 Ω, VDD = 20 V (See note 2.) |
| | Turn-OFF time | TOFF | - | 0.1 | 1.0 | ms | |

Note: 2. Turn-ON and Turn-OFF Times



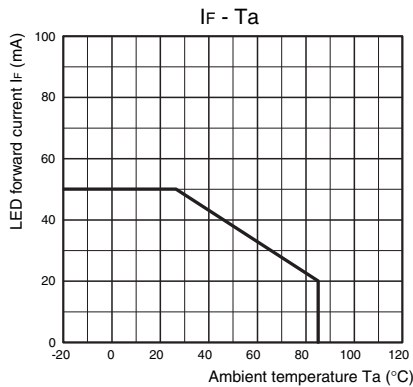
Recommended Operating Conditions

Use the G3VM under the following conditions so that the Relay will operate properly.

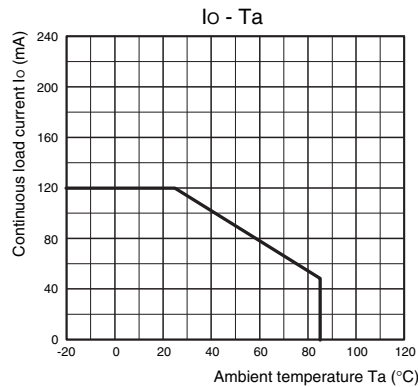
| Item | Symbol | Minimum | Typical | Maximum | Unit |
|--------------------------------------|-----------------|---------|---------|---------|------|
| Load voltage (AC peak/DC) | V _{DD} | - | - | 280 | V |
| Operating LED forward current | I _F | 5 | 7.5 | 25 | mA |
| Continuous load current (AC peak/DC) | I _O | - | - | 100 | mA |
| Ambient operating temperature | T _a | -20 | - | 65 | °C |

Engineering Data

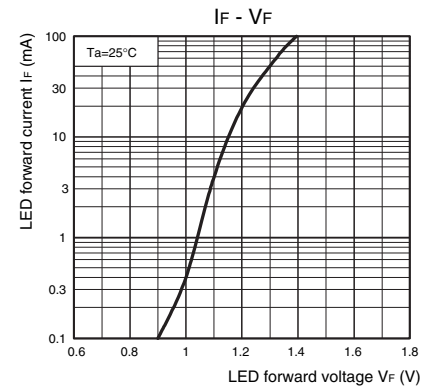
LED forward current vs. Ambient temperature



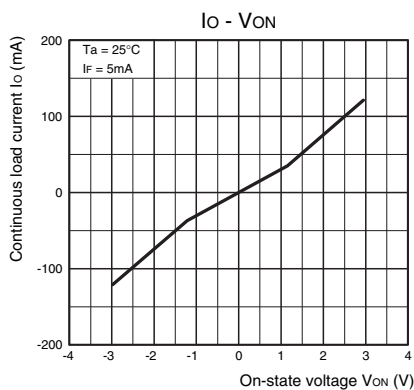
Continuous load current vs. Ambient temperature



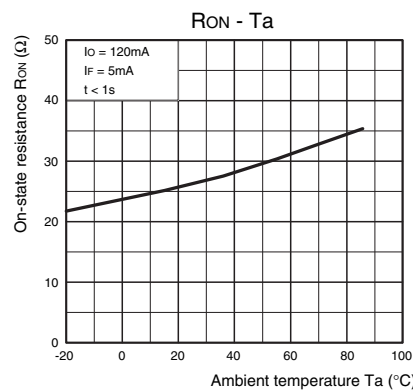
LED forward current vs. LED forward voltage



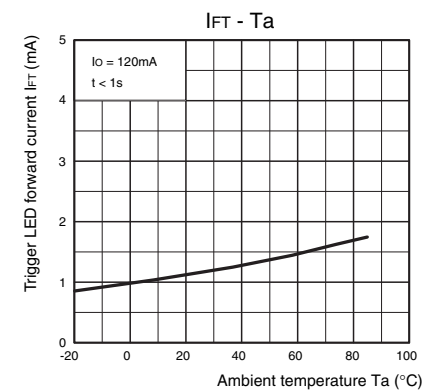
Continuous load current vs. On-state voltage



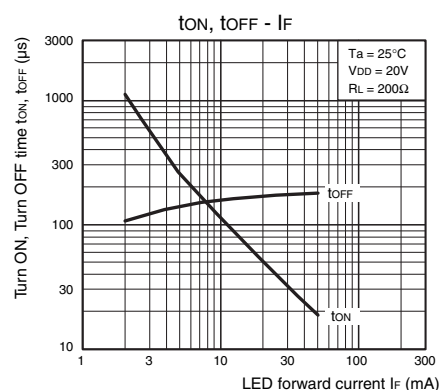
On-state resistance vs. Ambient temperature



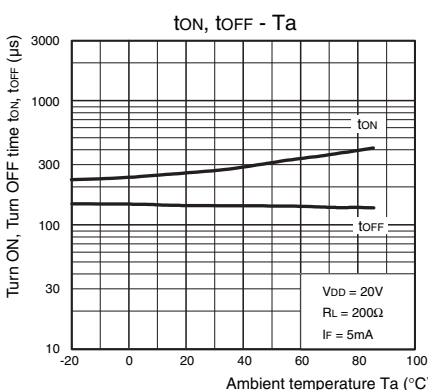
Trigger LED forward current vs. Ambient temperature



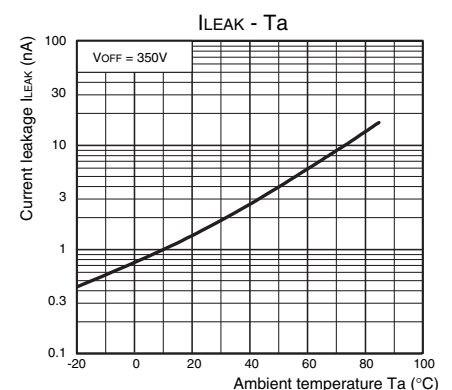
Turn ON, Turn OFF time vs. LED forward current



Turn ON, Turn OFF time vs. Ambient temperature



Current leakage vs. Ambient temperature



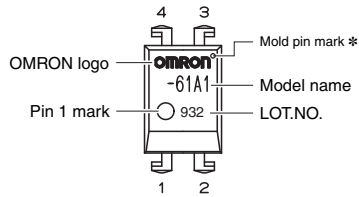
Safety Precautions

- Refer to "Common Precautions" for all G3VM models.

■ Appearance

DIP (Dual Inline Package)

DIP4

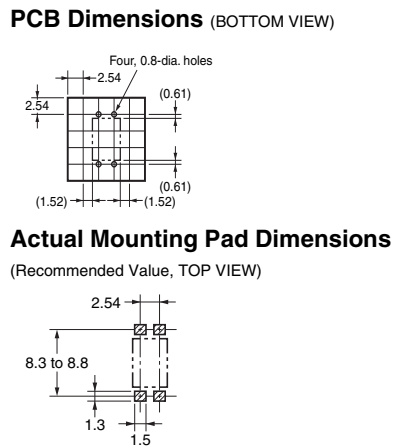
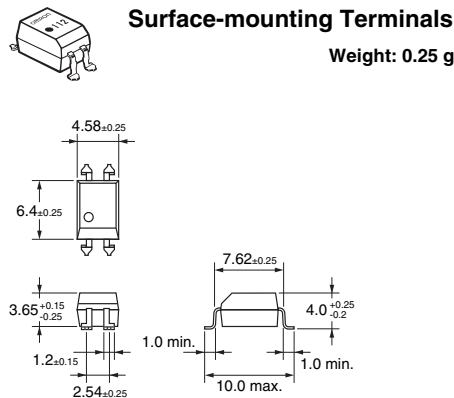
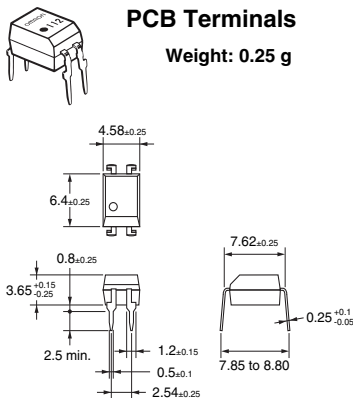


Note: The actual product is marked differently from the image shown here.

* The indentation in the corner diagonally opposite from the pin 1 mark is from a pin on the mold.

■ Dimensions

(Unit:mm)





Note: The actual product is marked differently from the image shown here.

- Application examples provided in this document are for reference only. In actual applications, confirm equipment functions and safety before using the product.
- Consult your OMRON representative before using the product under conditions which are not described in the manual or applying the product to nuclear control systems, railroad systems, aviation systems, vehicles, combustion systems, medical equipment, amusement machines, safety equipment, and other systems or equipment that may have a serious influence on lives and property if used improperly. Make sure that the ratings and performance characteristics of the product provide a margin of safety for the system or equipment, and be sure to provide the system or equipment with double safety mechanisms.

Note: Do not use this document to operate the Unit.

Looking for pricing, stock, or lifecycle information?

Click below to explore more details on WIN SOURCE:

-  [View G3VM-351D on WIN SOURCE](#)
-  [Omron Information](#)

Optimize Your Supply Chain with WIN SOURCE Solutions

-  Global Sourcing Solution
-  Obsolete Management
-  Cost Control Management
-  Shortage Management
-  Alternative Solution
-  Excess Inventory Management