



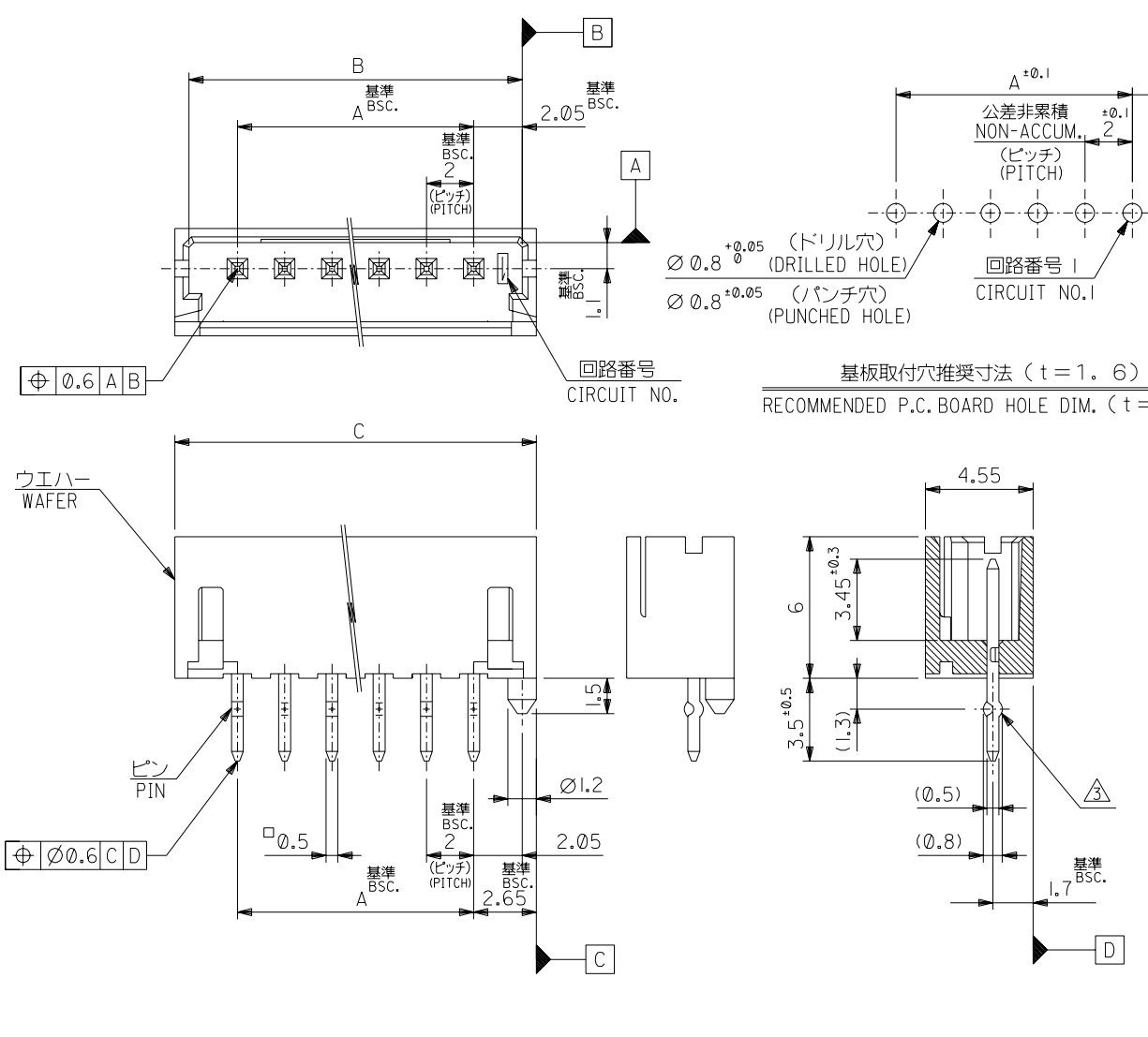
THE DATASHEET OF
53324-0960



DWG. NO. SD-53324-003

DO NOT SCALE DRAWING

DO NOT SCALE DRAWING



注記 NOTES

1. 嵌合相手: 51090-***00, 52484-***1*
MATES WITH
 2. 材質 MATERIAL
ウエハー: ガラス入り 66ナイロン
UL94V-0 色: 表参照
WAFER: GLASS FILL 66 NYLON
UL94V-0, COLOR: SEE CHART
ピン: 黄銅, スズメッキ
PIN: BRASS, PRE-TINNED
- △ キンクは全ピンに交互に付加。2極はキンク無し。
SET KINK ALTERNATELY TO ALL CIRCUITS.
CIRCUIT 2 HAS NO KINK.
- △ 製品番号 MATERIAL NO.
53324-***6*
極数CIRCUIT SIZE 色COLOR
- | | |
|------------------------------|---|
| ナチュラル (白) NATURAL (WHITE) | 0 |
| 赤 RED | 2 |
| 黄 YELLOW | 3 |
| 青 BLUE | 4 |

無鉛
LEAD FREE

| | | | | | |
|---------|------|------|----|----------------|-------------|
| 15 | 33.3 | 32.1 | 28 | 53324-156* | 53324-***6* |
| 14 | 31.3 | 30.1 | 26 | -146* | |
| 13 | 29.3 | 28.1 | 24 | -136* | |
| 12 | 27.3 | 26.1 | 22 | -126* | |
| 11 | 25.3 | 24.1 | 20 | -116* | |
| 10 | 23.3 | 22.1 | 18 | -106* | |
| 9 | 21.3 | 20.1 | 16 | -096* | |
| 8 | 19.3 | 18.1 | 14 | -086* | |
| 7 | 17.3 | 16.1 | 12 | -076* | |
| 6 | 15.3 | 14.1 | 10 | -066* | |
| 5 | 13.3 | 12.1 | 8 | -056* | |
| 4 | 11.3 | 10.1 | 6 | -046* | |
| 3 | 9.3 | 8.1 | 4 | -036* | |
| 2 | 7.3 | 6.1 | 2 | 53324-026* | |
| 極数 CKT. | C | B | A | △ MATERIAL NO. | |

| | | | | | | | | | | | | | | |
|--|----------------------------------|----------------------------------|----------------------------------|--|---------|------------------|-----------------|------------------------|----------------------|--|--|--|---|-------------------|
| EC NO. DRWN: CHK: APPR: | EC NO. DRWN: CHK: APPR: | EC NO. DRWN: CHK: APPR: | EC NO. DRWN: CHK: APPR: | ECNNO-J2003-2361 DRWN: A.IDA '03/03/13 CHK: J.MIYAZAWA '03/03/13 APPR: YO.ITO '03/03/13 | RELEASD | MATERIAL 材料 # | FINISH 仕上げ # | WIRE RANGE 適用線径範囲 # | INS. RANGE 被覆外径 # | GENERAL TOLERANCES: (UNLESS SPECIFIED) 一般公差 10 UNDER 未満 ±0.2 10 OVER 以上 30 UNDER 未満 ±0.25 30 OVER 以上 ±0.3 | SCALE 5-1 DESIGN UNITS <input checked="" type="checkbox"/> mm <input type="checkbox"/> INCH | THIRD ANGLE PROJECTION <input checked="" type="checkbox"/> | DIMENSIONS: <input type="checkbox"/> mm <input type="checkbox"/> INCH <input checked="" type="checkbox"/> mm ONLY | SHT 1 OF 1 REV |
| 注記参照 SEE NOTES | | | | | | | | | | DRAWN BY & DATE A. Ida '03/03/13 | | TITLE: 2.0 WIRE TO BOARD CONN. WAFER ASS'Y (ST.) | | |
| | | | | | | | | | | CHECKED BY & DATE J. Miyazawa '03/03/13 | | MATERIAL NO. SEE CHART | | |
| | | | | | | | | | | APPROVED BY & DATE Y. Ito '03/03/13 | | DRAWING NO. SD-53324-003 | | |
| | | | | | | | | | | CAD FILENAME SD-53324-003.S01 | | SHEET NO. 1 OF 1 | | |
| THIS DRAWING CONTAINS INFORMATION THAT IS PROPRIETARY TO MOLEX INCORPORATED AND SHOULD NOT BE USED WITHOUT WRITTEN PERMISSION. | | | | | | | | | | | | | | |

Looking for pricing, stock, or lifecycle information?

Click below to explore more details on WIN SOURCE:

 [View 53324-0960 on WIN SOURCE](#)

 [Molex, LLC Information](#)

Optimize Your Supply Chain with WIN SOURCE Solutions

-  Global Sourcing Solution
-  Obsolete Management
-  Cost Control Management
-  Shortage Management
-  Alternative Solution
-  Excess Inventory Management