

S22MD1V/S22MD3

Photothyristor Coupler

* Lead forming type (I type) and taping reel type (P type) of **S22MD1V** are also available (**S22MD1V/S22MD1P**)

** TÜV (DIN-VDE0884) approved type is also available as an option.

■ Features

1. High repetitive peak OFF-state voltage
(V_{DRM} : MIN. 600V)
2. Low trigger current
(I_{FT} : MAX. 10mA at $R_G = 20k\Omega$)
3. High isolation voltage between input and output

S22MD1V ... V_{iso} : 5 000V_{rms}

S22MD3V ... V_{iso} : 2 500V_{rms}

* **S22MD1V** and **S22MD3** are for 200V line.

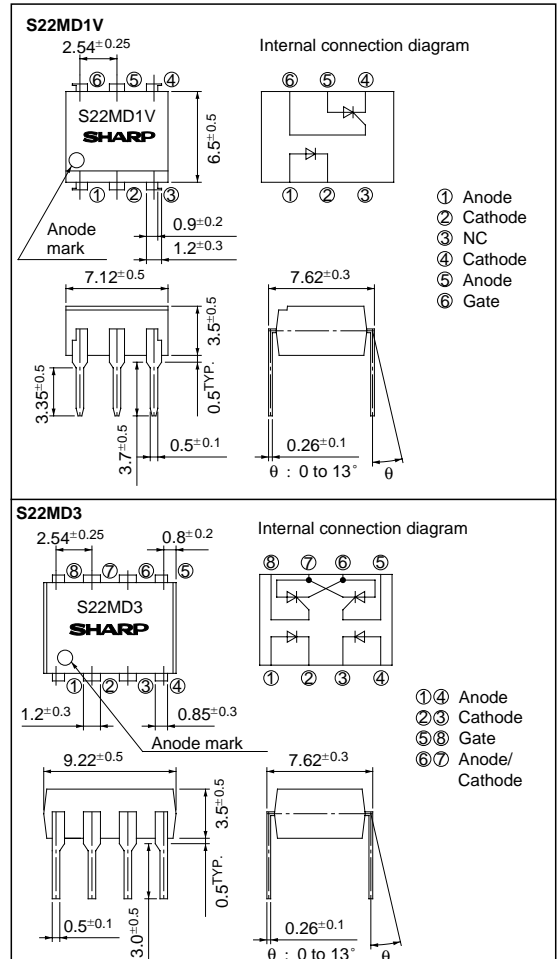
4. Recognized by UL, file NO. 64380

■ Applications

1. ON-OFF operation for a low power load
2. For triggering high power thyristor and triac

■ Outline Dimensions

(Unit : mm)



Absolute Maximum Ratings

(Ta = 25°C)

Parameter		Symbol	Rating		Unit
			S22MD1V	S22MD3	
Input	Forward current	I _F	50		mA
	Reverse voltage	V _R	6		V
Output	RMS ON-state current	I _T	200		mA _{rms}
	*1Peak one cycle surge current	I _{surge}	2		A
	*2Repetitive peak OFF-state voltage	V _{DRM}	600		V
	*2Repetitive peak reverse voltage	V _{RRM}	600	-	V
*3Isolation voltage		V _{iso}	5 000	2 500	V _{rms}
Operating temperature		T _{opr}	-30 to +100	-30 to +100	°C
Storage temperature		T _{stg}	-55 to +125	-40 to +125	°C
*4Soldering temperature		T _{sol}	260		°C

*1 50H z, sine wave

*2 R_G = 20kΩ

*3 40 to 60% RH, AC for 1 minute

*4 For 10 seconds

Electro-optical Characteristics

(Ta = 25°C)

Parameter		Symbol	Conditions	MIN.	TYP.	MAX.	Unit
Input	Forward voltage	V _F	I _F = 30mA	-	1.2	1.4	V
	Reverse current	I _R	V _R = 3V	-	-	10 ⁻⁵	A
Output	Repetitive peak OFF-state current	I _{DRM}	V _{DRM} = Rated, R _G = 20kΩ	-	-	10 ⁻⁶	A
	*5Repetitive peak reverse current	I _{RRM}	V _{RRM} = Rated, R _G = 20kΩ	-	-	10 ⁻⁶	A
	ON-state voltage	V _T	I _T = 200mA	-	1.0	1.4	V
	Holding current	I _H	V _D = 6V, R _G = 20kΩ	-	0.2	1	mA
	Critical rate of rise of OFF-state voltage	dV/dt	V _{DRM} = 1/√2 Rated, R _G = 20kΩ	5	-	-	V/μs
	3			-	-		
Transfer characteristics	Minimum trigger current	I _{FT}	V _D = 6V, R _L = 100Ω, R _G = 20kΩ	-	-	10	mA
	Isolation resistance	R _{ISO}	DC500V, 40 to 60% RH	5 x 10 ¹⁰	10 ¹¹	-	Ω
	Turn-on time	t _{on}	V _D = 6V, R _G = 20kΩ, R _L = 100Ω, I _F = 30mA	-	20	50	μs

*5 Applies only to S22MD1V

Fig. 1 RMS ON-state Current vs. Ambient Temperature

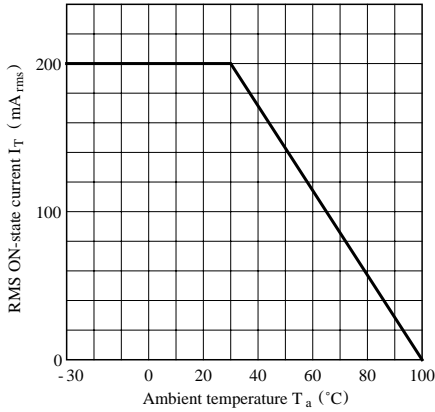


Fig. 2 Forward Current vs. Ambient Temperature

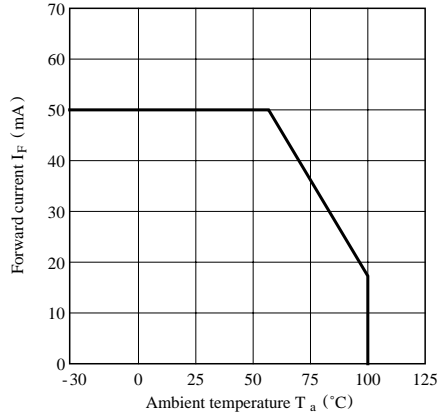


Fig. 3 Forward Current vs. Forward Voltage

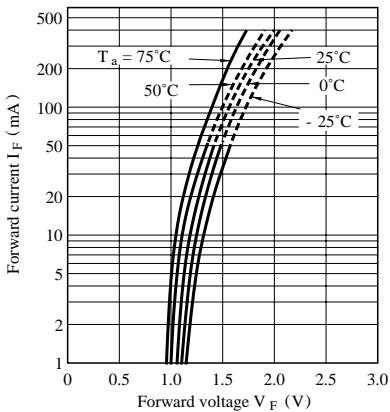


Fig. 4 Minimum Trigger Current vs. Ambient Temperature

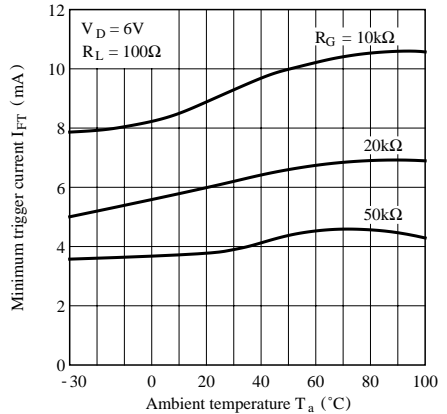


Fig. 5 Minimum Trigger Current vs. Gate Resistance

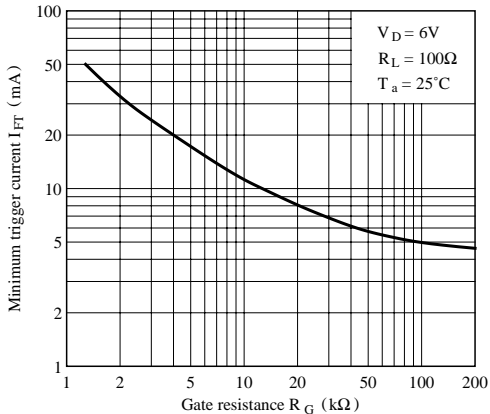


Fig. 6 Break Over Voltage vs. Ambient Temperature

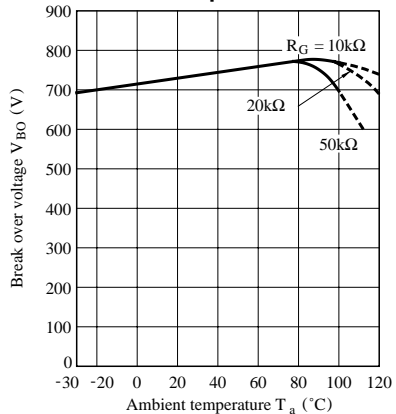


Fig. 7 Critical Rate of Rise of OFF-state Voltage vs. Ambient Temperature

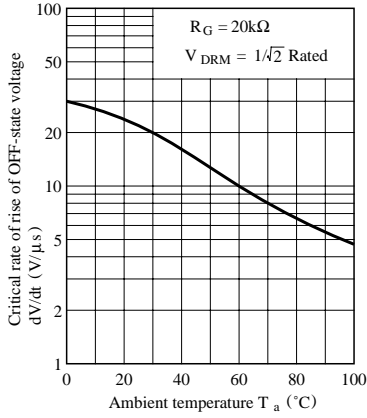


Fig. 8 Holding Current vs. Ambient Temperature

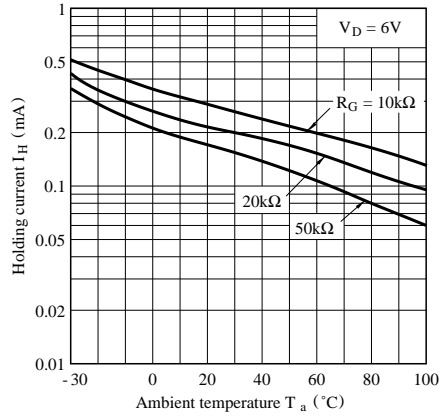
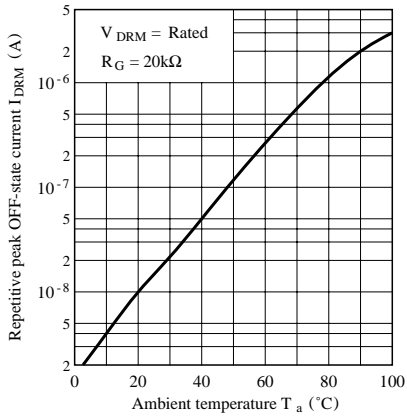


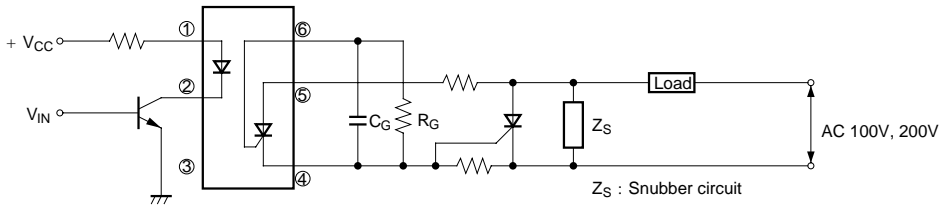
Fig. 9 Repetitive Peak OFF-state Current vs. Ambient Temperature



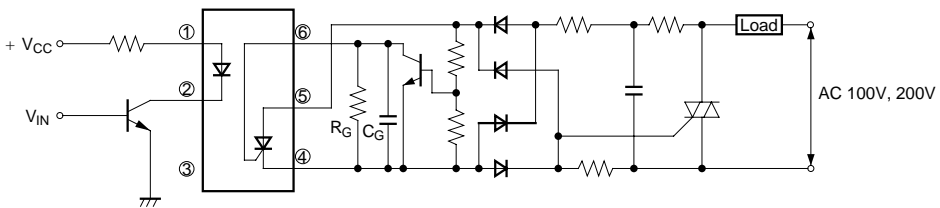
■ Basic Operation Circuit

● S22MD1V

Medium/High Power Thyristor Drive Circuit

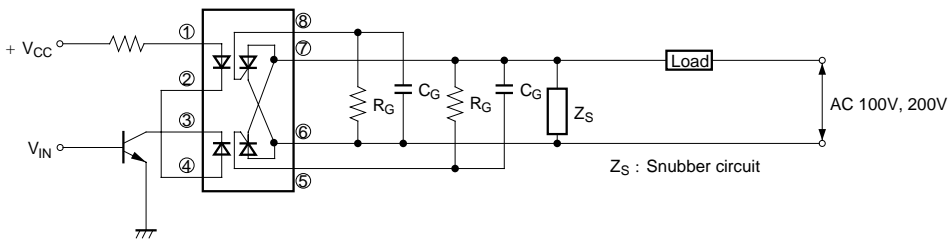


Medium/High Power Triac Drive Circuit (Zero-cross Operation)

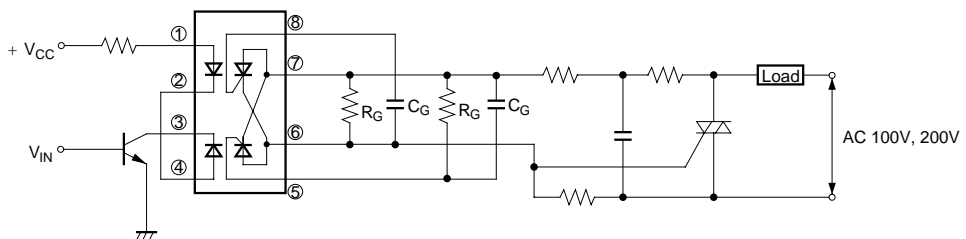


● S22MD3

Low Power Load Drive Circuit



Medium/High Power Triac Drive Circuit





● Please refer to the chapter “Precautions for Use” (Page 78 to 93).

NOTICE






- The circuit application examples in this publication are provided to explain representative applications of SHARP devices and are not intended to guarantee any circuit design or license any intellectual property rights. SHARP takes no responsibility for any problems related to any intellectual property right of a third party resulting from the use of SHARP's devices.
- Contact SHARP in order to obtain the latest device specification sheets before using any SHARP device. SHARP reserves the right to make changes in the specifications, characteristics, data, materials, structure, and other contents described herein at any time without notice in order to improve design or reliability. Manufacturing locations are also subject to change without notice.
- Observe the following points when using any devices in this publication. SHARP takes no responsibility for damage caused by improper use of the devices which does not meet the conditions and absolute maximum ratings to be used specified in the relevant specification sheet nor meet the following conditions:
 - (i) The devices in this publication are designed for use in general electronic equipment designs such as:
 - Personal computers
 - Office automation equipment
 - Telecommunication equipment [terminal]
 - Test and measurement equipment
 - Industrial control
 - Audio visual equipment
 - Consumer electronics
 - (ii) Measures such as fail-safe function and redundant design should be taken to ensure reliability and safety when SHARP devices are used for or in connection with equipment that requires higher reliability such as:
 - Transportation control and safety equipment (i.e., aircraft, trains, automobiles, etc.)
 - Traffic signals
 - Gas leakage sensor breakers
 - Alarm equipment
 - Various safety devices, etc.
 - (iii) SHARP devices shall not be used for or in connection with equipment that requires an extremely high level of reliability and safety such as:
 - Space applications
 - Telecommunication equipment [trunk lines]
 - Nuclear power control equipment
 - Medical and other life support equipment (e.g., scuba).
- Contact a SHARP representative in advance when intending to use SHARP devices for any "specific" applications other than those recommended by SHARP or when it is unclear which category mentioned above controls the intended use.
- If the SHARP devices listed in this publication fall within the scope of strategic products described in the Foreign Exchange and Foreign Trade Control Law of Japan, it is necessary to obtain approval to export such SHARP devices.
- This publication is the proprietary product of SHARP and is copyrighted, with all rights reserved. Under the copyright laws, no part of this publication may be reproduced or transmitted in any form or by any means, electronic or mechanical, for any purpose, in whole or in part, without the express written permission of SHARP. Express written permission is also required before any use of this publication may be made by a third party.
- Contact and consult with a SHARP representative if there are any questions about the contents of this publication.

Looking for pricing, stock, or lifecycle information?

Click below to explore more details on WIN SOURCE:

-  [View S22MD3 on WIN SOURCE](#)
-  [Sharp Microelectronics Information](#)

Optimize Your Supply Chain with WIN SOURCE Solutions

-  Global Sourcing Solution
-  Obsolete Management
-  Cost Control Management
-  Shortage Management
-  Alternative Solution
-  Excess Inventory Management