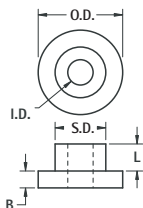




THE DATASHEET OF
340



NYLON SHOULDER WASHER/BUSHINGS

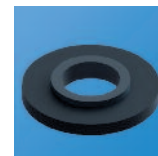
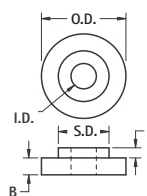


MATERIAL: Nylon 6/6 per ASTM D4066

CAT. NO.	L	O.D.	B	I.D.	S.D.	SCREW SIZE
7680	.025 (.64)	.260 (6.6)	.030 (.76)	.095 (2.4)	.154 (3.9)	#2
3051	.125 (3.2)	.181 (4.6)	.047 (1.2)	.090 (2.3)	.120 (3.1)	
3101	.187 (4.8)	.181 (4.6)	.047 (1.2)	.090 (2.3)	.120 (3.1)	
3052	.250 (6.4)	.181 (4.6)	.047 (1.2)	.090 (2.3)	.120 (3.1)	
3049*	.031 (.79)	.218 (5.5)	.040 (1.0)	.115 (2.9)	.135 (3.4)	#4
7681	.047 (1.2)	.250 (6.4)	.032 (.81)	.115 (2.9)	.185 (4.7)	
3053	.093 (2.4)	.235 (6.0)	.047 (1.2)	.115 (2.9)	.145 (3.7)	
3102	.125 (3.2)	.235 (6.0)	.047 (1.2)	.115 (2.9)	.145 (3.7)	
3103	.187 (4.7)	.235 (6.0)	.047 (1.2)	.115 (2.9)	.145 (3.7)	
340	.250 (6.4)	.235 (6.0)	.047 (1.2)	.115 (2.9)	.145 (3.7)	
7682	.032 (.81)	.385 (9.8)	.062 (1.57)	.145 (3.7)	.240 (6.1)	#6
7683	.032 (.81)	.250 (6.4)	.062 (1.57)	.140 (3.6)	.187 (4.7)	
7684	.032 (.81)	.312 (7.9)	.062 (1.57)	.140 (3.6)	.187 (4.7)	
3054	.125 (3.2)	.290 (7.4)	.047 (1.19)	.140 (3.6)	.170 (4.3)	
3104	.187 (4.7)	.290 (7.4)	.047 (1.19)	.140 (3.6)	.170 (4.3)	
341	.250 (6.4)	.290 (7.4)	.047 (1.19)	.140 (3.6)	.170 (4.3)	
3055	.500 (12.7)	.290 (7.4)	.047 (1.19)	.140 (3.6)	.170 (4.3)	
7685	.032 (.81)	.375 (9.5)	.032 (.81)	.171 (4.3)	.250 (6.4)	
3056	.140 (3.6)	.344 (8.7)	.062 (1.57)	.171 (4.3)	.205 (5.2)	
3105	.250 (6.4)	.344 (8.7)	.062 (1.57)	.171 (4.3)	.205 (5.2)	
342	.375 (9.5)	.344 (8.7)	.062 (1.57)	.171 (4.3)	.205 (5.2)	
3106	.500 (12.7)	.344 (8.7)	.062 (1.57)	.171 (4.3)	.205 (5.2)	
7686	.032 (.81)	.375 (9.5)	.062 (1.57)	.196 (5.0)	.308 (7.8)	#10
3107	.093 (2.36)	.438 (11.1)	.062 (1.57)	.200 (5.1)	.260 (6.6)	
3108	.250 (6.4)	.399 (10.1)	.062 (1.57)	.200 (5.1)	.260 (6.6)	
3057	.500 (12.7)	.399 (10.1)	.062 (1.57)	.200 (5.1)	.260 (6.6)	
3058	.750 (19.1)	.399 (10.1)	.062 (1.57)	.200 (5.1)	.260 (6.6)	
7687	.032 (.81)	.437 (11.1)	.032 (.81)	.253 (6.4)	.310 (7.9)	.250-20
7688	.078 (1.98)	.492 (12.7)	.032 (.81)	.260 (6.7)	.312 (7.9)	
3059	.187 (4.7)	.513 (13.0)	.062 (1.57)	.260 (6.7)	.312 (7.9)	
3109	.250 (6.4)	.513 (13.0)	.062 (1.57)	.260 (6.7)	.312 (7.9)	
3110	.375 (9.5)	.513 (13.0)	.062 (1.57)	.260 (6.7)	.312 (7.9)	
3060	.500 (12.7)	.513 (13.0)	.062 (1.57)	.260 (6.7)	.312 (7.9)	

* Black

FIBRE SHOULDER WASHERS



MATERIAL: Fibre, Commercial Grade per ASTM D710

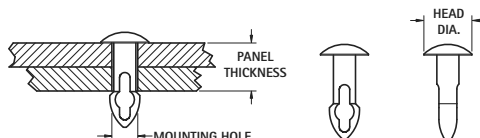
CAT. NO.	L	O.D.	B	I.D.	S.D.	SCREW SIZE
3229	.025 (.64)	.250 (6.4)	.047 (1.2)	.093 (2.4)	.123 (3.1)	#2
3061	.025 (.64)	.250 (6.4)	.047 (1.2)	.093 (2.4)	.156 (4.0)	
344	.015 (.38)	.312 (7.9)	.062 (1.57)	.125 (3.2)	.203 (5.2)	#4
343	.025 (.64)	.312 (7.9)	.062 (1.57)	.125 (3.2)	.203 (5.2)	
3062	.031 (.79)	.250 (6.4)	.031 (.79)	.115 (2.9)	.187 (4.7)	
3230	.031 (.79)	.281 (7.1)	.062 (1.57)	.115 (2.9)	.175 (4.4)	
3231	.031 (.79)	.312 (7.9)	.062 (1.57)	.120 (3.1)	.180 (4.6)	#6
4698	.031 (.79)	.250 (6.4)	.062 (1.57)	.140 (3.6)	.187 (4.7)	
3064	.031 (.79)	.312 (7.9)	.062 (1.57)	.140 (3.6)	.187 (4.7)	
3232	.031 (.79)	.375 (9.5)	.062 (1.57)	.140 (3.6)	.210 (5.3)	
3233	.031 (.79)	.375 (9.5)	.062 (1.57)	.140 (3.6)	.240 (6.1)	
3234	.031 (.79)	.500 (12.7)	.062 (1.57)	.140 (3.6)	.240 (6.1)	
3065	.031 (.79)	.375 (9.5)	.062 (1.57)	.170 (4.3)	.246 (6.2)	#8
3066	.031 (.79)	.417 (10.6)	.062 (1.57)	.170 (4.3)	.210 (5.3)	
3235	.031 (.79)	.312 (7.9)	.062 (1.57)	.170 (4.3)	.218 (5.5)	
3236	.031 (.79)	.375 (9.5)	.062 (1.57)	.170 (4.3)	.215 (5.5)	
3237	.031 (.79)	.500 (12.7)	.062 (1.57)	.170 (4.3)	.240 (6.1)	
4702	.031 (.79)	.375 (9.5)	.062 (1.57)	.194 (4.9)	.308 (7.8)	
3238	.031 (.79)	.375 (9.5)	.062 (1.57)	.194 (4.9)	.240 (6.1)	
3239	.031 (.79)	.500 (12.7)	.062 (1.57)	.196 (5.0)	.240 (6.1)	
4711	.031 (.79)	.500 (12.7)	.062 (1.57)	.253 (6.4)	.308 (7.8)	
3240	.031 (.79)	.625 (15.9)	.062 (1.57)	.265 (6.7)	.359 (9.1)	.250-20
3069	.031 (.79)	.625 (15.9)	.062 (1.57)	.385 (9.8)	.498 (12.6)	.375-24
3241	.031 (.79)	.750 (19.1)	.062 (1.57)	.385 (9.8)	.498 (12.6)	

WASHERS & CLIPS

KEY HOLE CLIPS



- Key hole design allows for easy installation of the fastener.
- Can be hand installed, no tooling required
- One piece design, can be removed and reused with no missing parts
- Bullet tip helps to align panels during the assembly process
- Tapered locking shank provide a tight fit between the two panels
- Domed head provides a clean appearance to top panel



MATERIAL: Nylon 6/6 UL Rated 94V-2, Black

CAT. NO.	PANEL THICKNESS	HOLE SIZE	HEAD DIA.
3300	.093 (2.4)	.125 (3.2)	.250 (6.4)
3301	.125 (3.2)		
3302	.156 (4.0)		
3303	.187 (4.8)		
3305	.250 (6.4)		
3310	.093 (2.4)	.158 (4.0)	.312 (7.9)
3311	.125 (3.2)		
3312	.156 (4.0)		
3313	.187 (4.8)		
3315	.250 (6.4)		
3320	.125 (3.2)		
3321	.156 (4.0)	.187 (4.8)	.312 (7.9)
3322	.187 (4.8)		
3324	.250 (6.4)		
3330	.156 (4.0)		
3331	.187 (4.8)		
3333	.250 (6.4)	.219 (5.6)	.344 (8.7)
3335	.312 (7.9)		

Looking for pricing, stock, or lifecycle information?

Click below to explore more details on WIN SOURCE:

- ⊖ [View 340](#) on WIN SOURCE
- ⊖ [Keystone Electronics](#) Information

Optimize Your Supply Chain with WIN SOURCE Solutions

- ✓ Global Sourcing Solution
- ✓ Obsolete Management
- ✓ Cost Control Management
- ✓ Shortage Management
- ✓ Alternative Solution
- ✓ Excess Inventory Management