

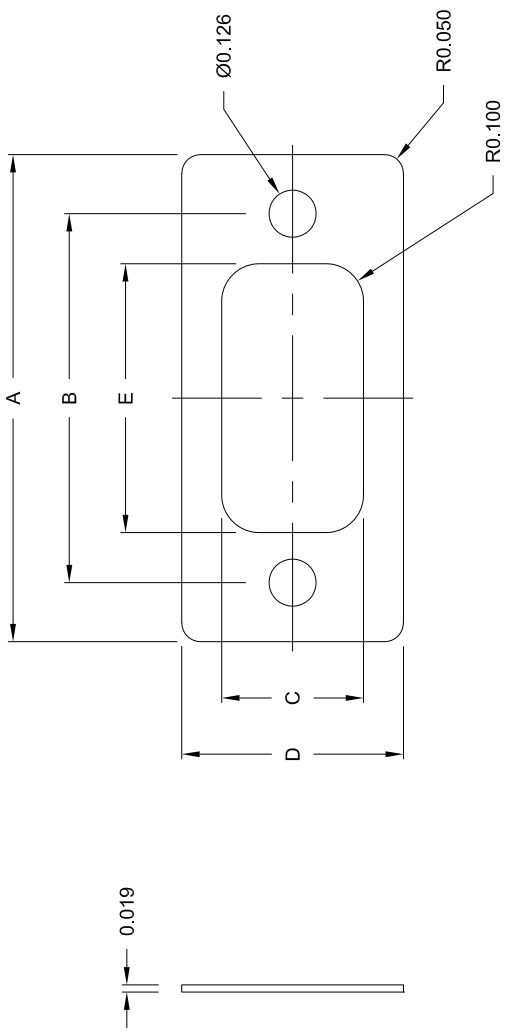


# THE DATASHEET OF SF37



DESCRIPTION: THIN SEALING FLANGE

# MATERIAL: SILICON



DIMENSION	SF09	SF15	SF25	SF37
A	1.299	1.614	2.165	2.835
B	.984	1.311	1.850	2.500
C	.378	.378	.378	.378
D	.591	.591	.591	.591
E	.717	1.039	1.583	2.228

SFYY

ROHS COMPLIANT



THESE DRAWINGS AND SPECIFICATIONS ARE THE PROPERTY OF NorComp AND SHALL NOT BE REPRODUCED, COPIED OR USED AS THE BASIS FOR THE MANUFACTURE OR SALE OF APPARATUS WITHOUT WRITTEN PERMISSION.

DRAWN:

P. JENKINS

DATE:

02/28/2004

UNITS = inch

DO NOT S

NorComp


SCALE:

NTS

DWG NO.

## Looking for pricing, stock, or lifecycle information?

Click below to explore more details on WIN SOURCE:

 [View SF37 on WIN SOURCE](#)

 [NorComp Inc. Information](#)

## Optimize Your Supply Chain with WIN SOURCE Solutions

-  Global Sourcing Solution
-  Obsolete Management
-  Cost Control Management
-  Shortage Management
-  Alternative Solution
-  Excess Inventory Management