



**THE DATASHEET OF**  
**5250**



## SPRING & BUTTON CONTACTS

- Economical and reliable contacts are ideal for molded cases with self contained battery compartments
- "Solder tab" design for either wire lead or PC mounting
- Unique spring contacts adjust to variations in battery lengths
- Reliable spring contacts assure low contact resistance and a dependable connection
- Space saving, economical, excellent mechanical construction

**MATERIAL:**

**Plate:** .020 (.51) Steel, Nickel Plate **Spring:** Spring Steel, Nickel Plate



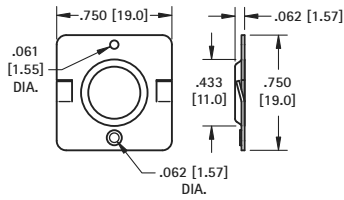
Refer to page 37 for Battery Contact Layout & Mounting Details

**BATTERY CONTACTS FOR MOLDED CASES**

**"C" CELL - "26650"**

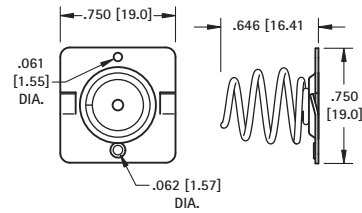


(+) POSITIVE BUTTON



**CAT. NO. 5240**

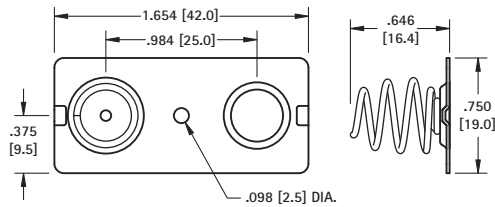
(-) NEGATIVE SPRING



**CAT. NO. 5241**

**"C" CELL**

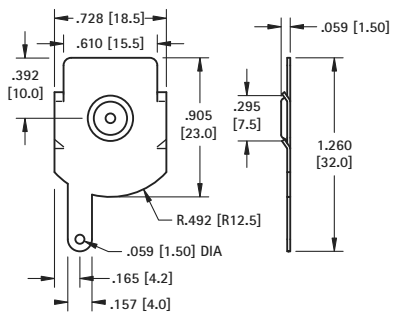
DUAL CONTACT



**CAT. NO. 5242**

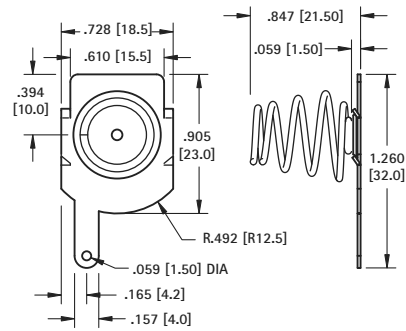
**"D" CELL**

(+) POSITIVE BUTTON



**CAT. NO. 5250**

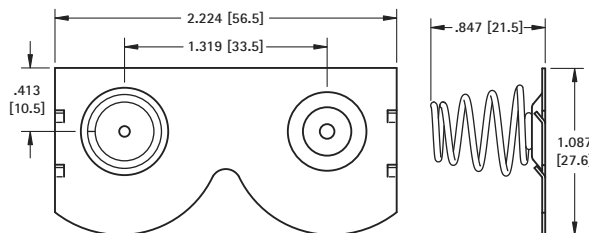
(-) NEGATIVE SPRING



**CAT. NO. 5251**



DUAL CONTACT





**CAT. NO. 5253** Left






**CAT. NO. 5252** Right (Shown)

## Looking for pricing, stock, or lifecycle information?

Click below to explore more details on WIN SOURCE:

-  [View 5250 on WIN SOURCE](#)
-  [Keystone Electronics Information](#)

## Optimize Your Supply Chain with WIN SOURCE Solutions

-  Global Sourcing Solution
-  Obsolete Management
-  Cost Control Management
-  Shortage Management
-  Alternative Solution
-  Excess Inventory Management