



THE DATASHEET OF EGP20A



Rectifiers, High Efficiency, Glass Passivated, 2.0 A

EGP20A - EGP20K



AXIAL LEAD DO 204
CASE 017AJ

Features

- Glass–Passivated Cavity–Free Junction
- High Surge Current Capability
- Low Leakage Current
- Super–Fast Recovery Time for High Efficiency
- Low Forward Voltage, High Current Capability

ABSOLUTE MAXIMUM RATINGS (T_A = 25°C unless otherwise noted)

| Symbol | Parameter | Value | Unit |
|-----------------------------------|--|------------|------|
| I _{F(AV)} | Average Rectified Current 0.375 inch lead length at T _A = 55°C | 2.0 | A |
| I _{FSM} | Peak Forward Surge Current 8.3 ms single half–sine–wave Superimposed on rated load (JEDEC method) | 75 | A |
| T _J , T _{STG} | Junction and Storage Temperature Range | –65 to 150 | °C |

Stresses exceeding those listed in the Maximum Ratings table may damage the device. If any of these limits are exceeded, device functionality should not be assumed, damage may occur and reliability may be affected.

THERMAL CHARACTERISTICS

| Symbol | Parameter | Value | Unit |
|------------------|---|-------|-------|
| P _D | Total Device Dissipation | 3.13 | W |
| | Derate above 25°C | 25 | mW/°C |
| R _{θJA} | Thermal Resistance, Junction to Ambient | 40 | °C/W |
| R _{θJL} | Thermal Resistance, Junction to Lead | 15 | °C/W |

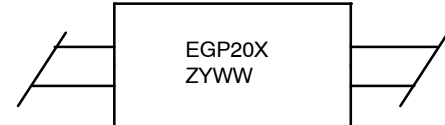
ELECTRICAL CHARACTERISTICS (T_A = 25°C unless otherwise noted)

| Parameter | Device | | | | | | | | Unit |
|---|------------------------|-----|-----|-----|------|-----|-----|-----|------|
| | 20A | 20B | 20C | 20D | 20F | 20G | 20J | 20K | |
| Peak Repetitive Reverse Voltage | 50 | 100 | 150 | 200 | 300 | 400 | 600 | 800 | V |
| Maximum RMS Voltage | 35 | 70 | 105 | 140 | 210 | 280 | 420 | 560 | V |
| DC Reverse Voltage (Rated V _R) | 50 | 100 | 150 | 200 | 300 | 400 | 600 | 800 | V |
| Maximum Reverse Current at Rated V _R | T _A = 25°C | | 5.0 | | | | | | μA |
| | T _A = 125°C | | 100 | | | | | | μA |
| Maximum Reverse Recovery Time I _F = 0.5 A, I _R = 1.0 A, I _{tr} = 0.25 A | 50 | | | | | | 75 | | nS |
| Maximum Forward Voltage @ 2.0 A | 0.95 | | | | 1.25 | | 1.7 | | V |
| Typical Junction Capacitance V _R = 4.0 V, f = 1.0 MHz | 70 | | | | 45 | | | | pF |

Product parametric performance is indicated in the Electrical Characteristics for the listed test conditions, unless otherwise noted. Product performance may not be indicated by the Electrical Characteristics if operated under different conditions.

*Pulse Test: Pulse Width ≤ 300 μs, Duty Cycle ≤ 2%.

MARKING DIAGRAM



EGP20X = Specific Device Code
X = A/B/C/D/F/G/J/K
Z = Assembly Code
YWW = Date Code (Year & Week)

ORDERING INFORMATION

See detailed ordering and shipping information on page 3 of this data sheet.

EGP20A – EGP20K

TYPICAL PERFORMANCE CHARACTERISTICS

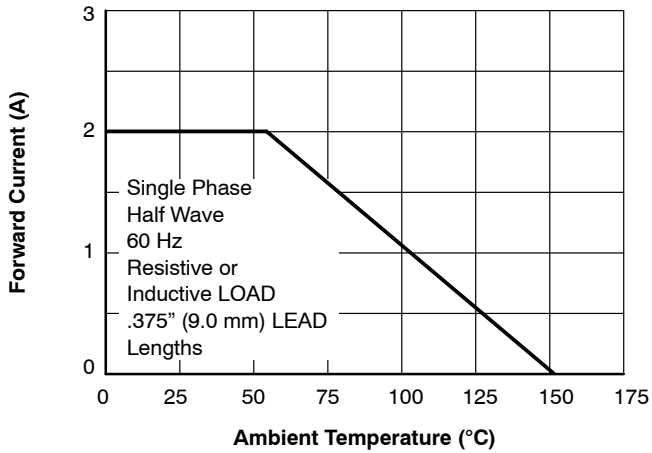


Figure 1. Forward Current Derating Curve

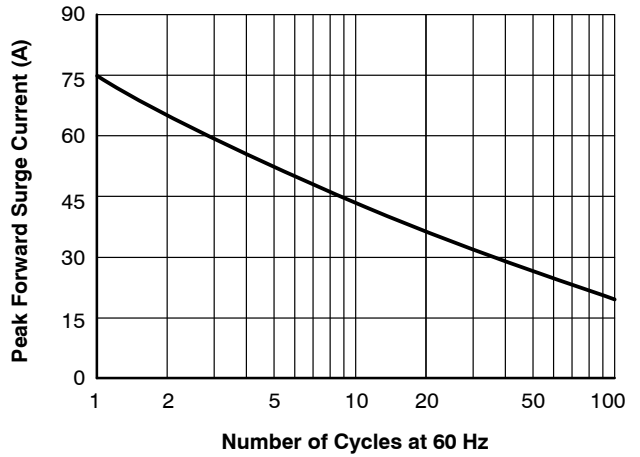


Figure 2. Non-Repetitive Surge Current

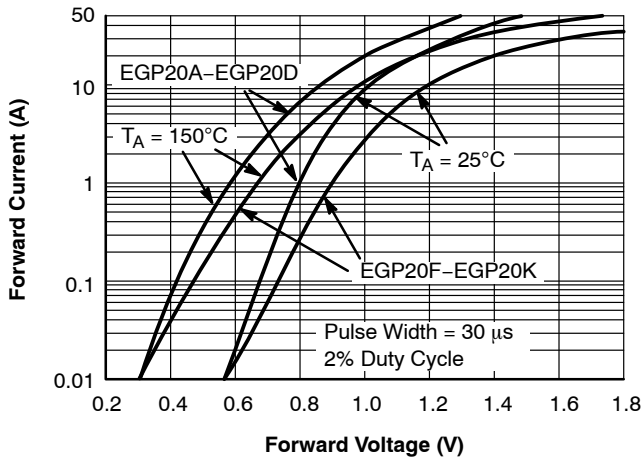


Figure 3. Forward Characteristics

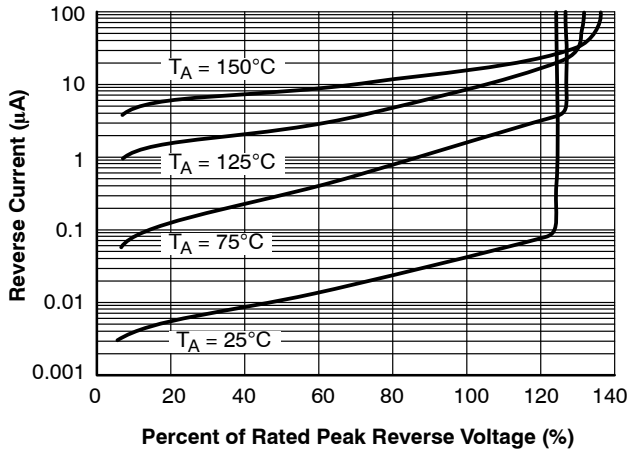


Figure 4. Reverse Characteristics

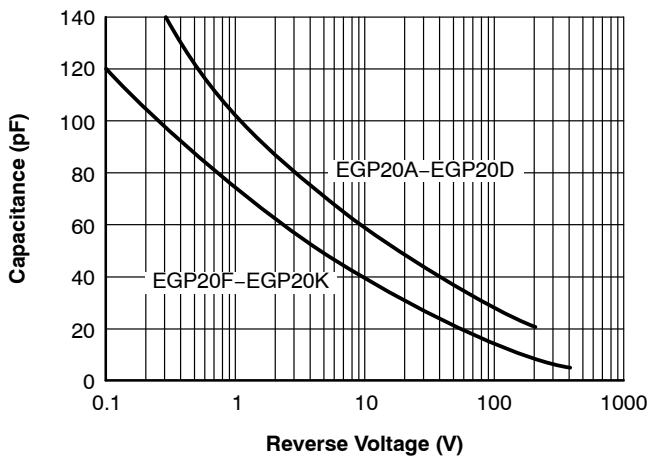
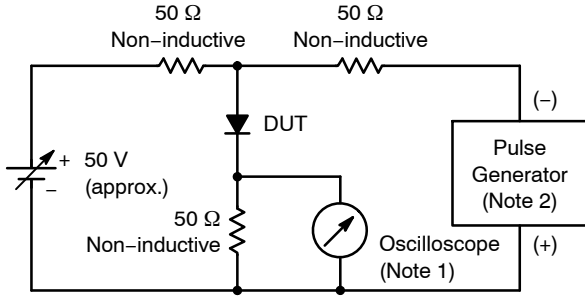


Figure 5. Junction Capacitance

EGP20A – EGP20K

Reverse Recovery Time Characteristic and Test Circuit Diagram



- Notes:
1. Rise time = 7.0 ns max; Input impedance = 1.0 MΩ 22 pF.
 2. Rise time = 10 ns max; Source impedance = 50 Ω.

Figure 6. Test Circuit Diagram

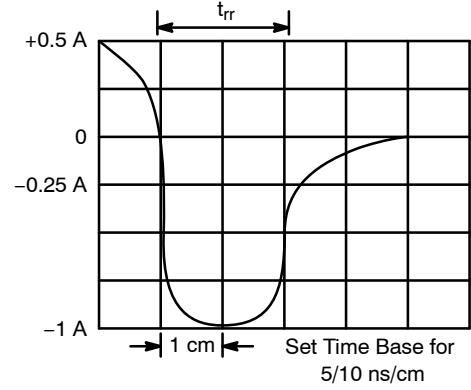


Figure 7. Reverse Recovery Time Characteristics

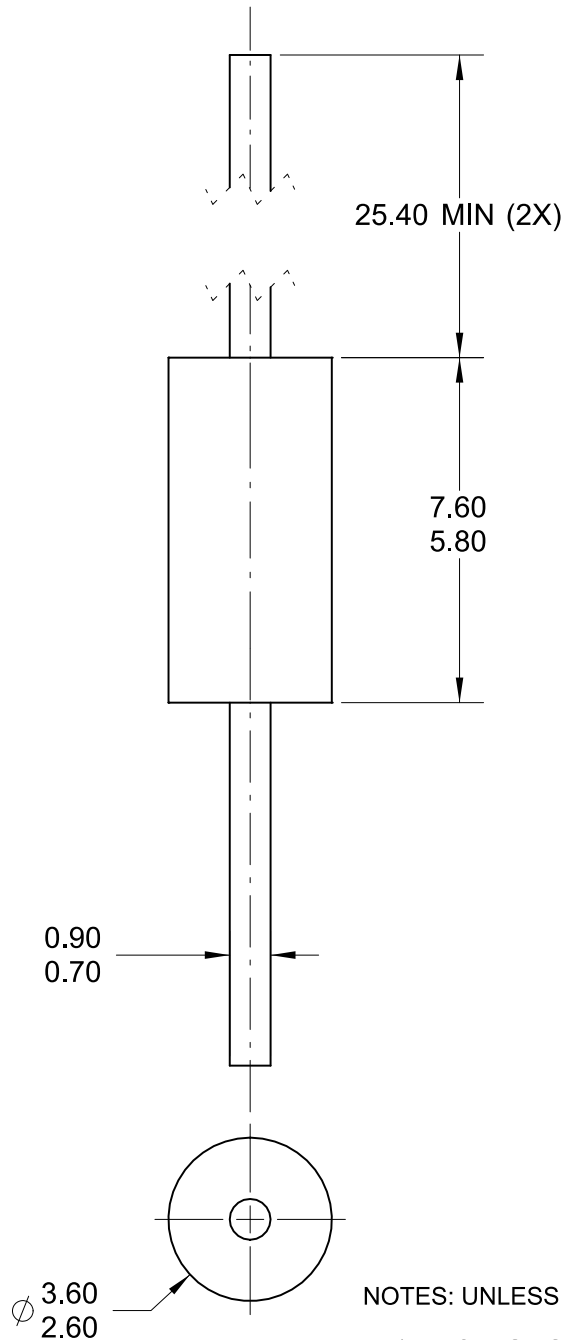
ORDERING INFORMATION

| Device | Package | Shipping† |
|--------|----------------------------------|--------------------|
| EGP20A | Axial Lead / DO-204 (Pb-Free) | 4000 / Tape & Reel |
| EGP20B | | |
| EGP20C | | |
| EGP20D | | |
| EGP20F | | |
| EGP20G | | |
| EGP20J | | |
| EGP20K | | |

†For information on tape and reel specifications, including part orientation and tape sizes, please refer to our Tape and Reel Packaging Specifications Brochure, BRD8011/D.

AXIAL LEAD DO 204
CASE 017AJ
ISSUE O


DATE 30 NOV 2016



NOTES: UNLESS OTHERWISE SPECIFIED

- A) PACKAGE STANDARD REFERENCE:
JEDEC DO-204 VARIATION AC.
- B) PLASTIC PACKAGE BODY.
- D) ALL DIMENSIONS ARE IN MILLIMETERS.

| | | |
|-------------------------|--------------------------|---|
| DOCUMENT NUMBER: | 98AON13437G | Electronic versions are uncontrolled except when accessed directly from the Document Repository. Printed versions are uncontrolled except when stamped "CONTROLLED COPY" in red. |
| DESCRIPTION: | AXIAL LEAD DO 204 | PAGE 1 OF 1 |

ON Semiconductor and  are trademarks of Semiconductor Components Industries, LLC dba ON Semiconductor or its subsidiaries in the United States and/or other countries. ON Semiconductor reserves the right to make changes without further notice to any products herein. ON Semiconductor makes no warranty, representation or guarantee regarding the suitability of its products for any particular purpose, nor does ON Semiconductor assume any liability arising out of the application or use of any product or circuit, and specifically disclaims any and all liability, including without limitation special, consequential or incidental damages. ON Semiconductor does not convey any license under its patent rights nor the rights of others.

onsemi, **Onsemi**, and other names, marks, and brands are registered and/or common law trademarks of Semiconductor Components Industries, LLC dba "**onsemi**" or its affiliates and/or subsidiaries in the United States and/or other countries. **onsemi** owns the rights to a number of patents, trademarks, copyrights, trade secrets, and other intellectual property. A listing of **onsemi**'s product/patent coverage may be accessed at www.onsemi.com/site/pdf/Patent-Marking.pdf. **onsemi** reserves the right to make changes at any time to any products or information herein, without notice. The information herein is provided "as-is" and **onsemi** makes no warranty, representation or guarantee regarding the accuracy of the information, product features, availability, functionality, or suitability of its products for any particular purpose, nor does **onsemi** assume any liability arising out of the application or use of any product or circuit, and specifically disclaims any and all liability, including without limitation special, consequential or incidental damages. Buyer is responsible for its products and applications using **onsemi** products, including compliance with all laws, regulations and safety requirements or standards, regardless of any support or applications information provided by **onsemi**. "Typical" parameters which may be provided in **onsemi** data sheets and/or specifications can and do vary in different applications and actual performance may vary over time. All operating parameters, including "Typicals" must be validated for each customer application by customer's technical experts. **onsemi** does not convey any license under any of its intellectual property rights nor the rights of others. **onsemi** products are not designed, intended, or authorized for use as a critical component in life support systems or any FDA Class 3 medical devices or medical devices with a same or similar classification in a foreign jurisdiction or any devices intended for implantation in the human body. Should Buyer purchase or use **onsemi** products for any such unintended or unauthorized application, Buyer shall indemnify and hold **onsemi** and its officers, employees, subsidiaries, affiliates, and distributors harmless against all claims, costs, damages, and expenses, and reasonable attorney fees arising out of, directly or indirectly, any claim of personal injury or death associated with such unintended or unauthorized use, even if such claim alleges that **onsemi** was negligent regarding the design or manufacture of the part. **onsemi** is an Equal Opportunity/Affirmative Action Employer. This literature is subject to all applicable copyright laws and is not for resale in any manner.

ADDITIONAL INFORMATION

TECHNICAL PUBLICATIONS:



Technical Library: www.onsemi.com/design/resources/technical-documentation
onsemi Website: www.onsemi.com

ONLINE SUPPORT: www.onsemi.com/support

For additional information, please contact your local Sales Representative at www.onsemi.com/support/sales

Looking for pricing, stock, or lifecycle information?

Click below to explore more details on WIN SOURCE:

-  [View EGP20A on WIN SOURCE](#)
-  [ON Semiconductor Information](#)

Optimize Your Supply Chain with WIN SOURCE Solutions

-  Global Sourcing Solution
-  Obsolete Management
-  Cost Control Management
-  Shortage Management
-  Alternative Solution
-  Excess Inventory Management