

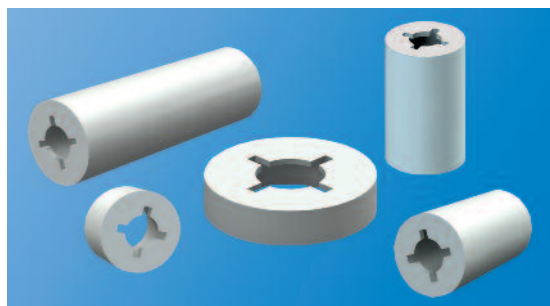
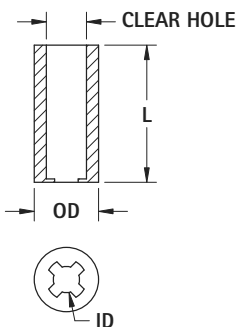


THE DATASHEET OF
358



NYLON RETAINING SPACERS

Similar to our standard spacers, but with a specially configured I.D. designed to grip the outside of the screw shank. The spacer slides on the screw easily, but is retained on the screw. For use in applications requiring pre-assembly of the screw and spacer, to reduce final assembly cost.

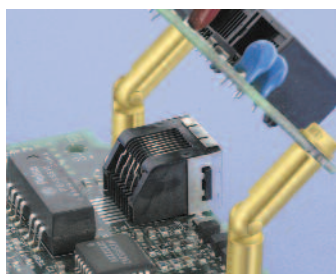


MATERIAL:

Nylon 6/6, UL Rated 94V-2

.156 (3.9) Clear Hole for #4 Screw				.198 (5.0) Clear Hole for #6 Screw				.240 (6.1) Clear Hole for #8 Screw				.277 (7.0) Clear Hole for #10 Screw			
CAT. NO.	LENGTH	O.D.	I.D.	CAT. NO.	LENGTH	O.D.	I.D.	CAT. NO.	LENGTH	O.D.	I.D.	CAT. NO.	LENGTH	O.D.	I.D.
2341	.125 (3.2)	.250 (6.4)	.102 (2.6)	2361	.125 (3.2)	.312 (7.9)	.128 (3.3)	2381	.125 (3.2)	.375 (9.5)	.152 (3.8)	2391	.125 (3.2)	.500 (12.7)	.177 (4.5)
2342	.250 (6.4)			2362	.250 (6.4)			2382	.250 (6.4)			2392	.250 (6.4)		
2343	.375 (9.5)			2363	.375 (9.5)			2383	.375 (9.5)			2393	.375 (9.5)		
2344	.500 (12.7)			2364	.500 (12.7)			2384	.500 (12.7)			2394	.500 (12.7)		
2345	.625 (15.9)			2365	.625 (15.9)			2385	.625 (15.9)			2395	.625 (15.9)		
2346	.750 (19.1)			2366	.750 (19.1)			2386	.750 (19.1)			2396	.750 (19.1)		
2347	.875 (22.2)			2367	.875 (22.2)			2387	.875 (22.2)			2397	.875 (22.2)		
2348	1.00 (25.4)			2368	1.00 (25.4)			2388	1.00 (25.4)			2398	1.00 (25.4)		

HINGED STANDOFFS



- Applications unlimited
- Time saving
- Space saving
- Interconnect circuits or services without danger of shorting



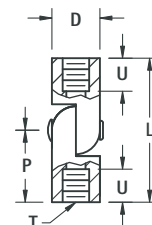
MATERIAL:

Brass, ASTM-B16. Zinc Plate and Yellow Chromate

FEMALE/FEMALE



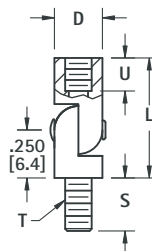
CAT. NO.	L LENGTH	U	P	D DIAMETER	T THREAD
351	.750 (19.1)	.172 (4.4)	.375 (9.5)	.187 (4.7)	4-40
352	1.000 (25.4)	.250 (6.4)	.625 (15.9)		
330	1.250 (31.8)	.250 (6.4)	.625 (15.9)		
353	.750 (19.1)	.172 (4.4)	.375 (9.5)		
354	1.000 (25.4)	.250 (6.4)	.625 (15.9)	.250 (6.4)	6-32
331	1.250 (31.8)	.250 (6.4)	.625 (15.9)		
355	.750 (19.1)	.172 (4.4)	.375 (9.5)	.250 (6.4)	8-32
356	1.000 (25.4)	.250 (6.4)	.625 (15.9)		
332	1.250 (31.8)	.250 (6.4)	.625 (15.9)		



MALE/FEMALE



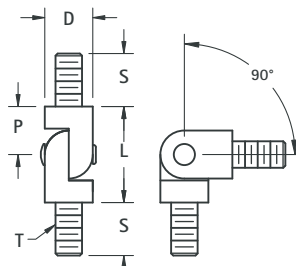
CAT. NO.	L LENGTH	S	U	D DIAMETER	T THREAD
333	.625 (15.9)	.250 (6.4)	.172 (4.4)	.187 (4.7)	4-40
334	.875 (22.2)	.250 (6.4)	.250 (6.4)		
335	.625 (15.9)	.312 (7.9)	.172 (4.4)	.250 (6.4)	6-32
336	.875 (22.2)	.312 (7.9)	.250 (6.4)		
337	.625 (15.9)	.312 (7.9)	.172 (4.4)		
338	.875 (22.2)	.312 (7.9)	.250 (6.4)		



MALE/MALE




CAT. NO.	L LENGTH	S	P	D DIAMETER	T THREAD
357	.500 (12.2)	.250 (6.4)	.250 (6.4)	.187 (4.7)	4-40
358	.500 (12.2)	.312 (7.9)	.250 (6.4)	.250 (6.4)	6-32
359	.500 (12.2)	.312 (7.9)	.250 (6.4)	.250 (6.4)	8-32



Looking for pricing, stock, or lifecycle information?

Click below to explore more details on WIN SOURCE:

-  [View 358 on WIN SOURCE](#)
-  [Keystone Electronics Information](#)

Optimize Your Supply Chain with WIN SOURCE Solutions

-  Global Sourcing Solution
-  Obsolete Management
-  Cost Control Management
-  Shortage Management
-  Alternative Solution
-  Excess Inventory Management