



**THE DATASHEET OF  
BQ24105IRHLRQ1**



# SYNCHRONOUS SWITCHMODE, LI-ION AND LI-POLYMER CHARGE-MANAGEMENT IC WITH INTEGRATED POWER FETs ( bqSWITCHER™)

Check for Samples: [bq24105-Q1](#)

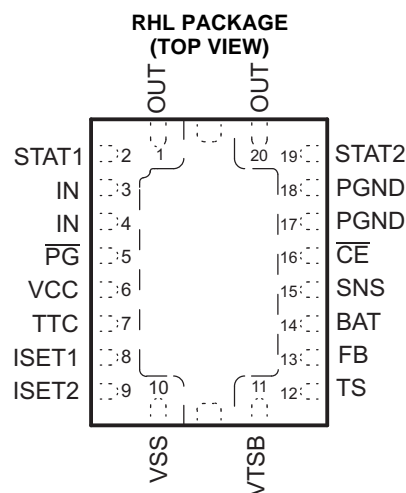
## FEATURES

- Qualified for Automotive Applications
- Ideal For Highly Efficient Charger Designs For Single-, Two-, or Three-Cell Li-Ion and Li-Polymer Battery Packs
- Also for LiFePO<sub>4</sub> Battery (see [Using bq24105 to Charge LiFePO4 Battery](#))
- Integrated Synchronous Fixed-Frequency PWM Controller Operating at 1.1 MHz With 0% to 100% Duty Cycle
- Integrated Power FETs For Up To 2-A Charge Rate
- High-Accuracy Voltage and Current Regulation
- Stand-Alone (Built-In Charge Management and Control) Version
- Status Outputs For LED or Host Processor Interface Indicates Charge-In-Progress, Charge Completion, Fault, and AC-Adapter Present Conditions
- 20-V Maximum Voltage Rating on IN and OUT Pins
- High-Side Battery Current Sensing
- Battery Temperature Monitoring
- Automatic Sleep Mode for Low Power Consumption
- Reverse Leakage Protection Prevents Battery Drainage
- Thermal Shutdown and Protection
- Built-In Battery Detection
- Available in 20-Pin, 3.5 mm × 4.5 mm, QFN Package

## DESCRIPTION

The bqSWITCHER™ series are highly integrated Li-ion and Li-polymer switch-mode charge management devices targeted at a wide range of portable applications. The bqSWITCHER™ series offers integrated synchronous PWM controller and power FETs, high-accuracy current and voltage regulation, charge preconditioning, charge status, and charge termination, in a small, thermally enhanced QFN package.

The bqSWITCHER charges the battery in three phases: conditioning, constant current, and constant voltage. Charge is terminated based on user-selectable minimum current level. A programmable charge timer provides a safety backup for charge termination. The bqSWITCHER automatically restarts the charge cycle if the battery voltage falls below an internal threshold. The bqSWITCHER automatically enters sleep mode when V<sub>CC</sub> supply is removed.



Please be aware that an important notice concerning availability, standard warranty, and use in critical applications of Texas Instruments semiconductor products and disclaimers thereto appears at the end of this data sheet.

bqSWITCHER, PowerPAD are trademarks of Texas Instruments. All other trademarks are the property of their respective owners.



This integrated circuit can be damaged by ESD. Texas Instruments recommends that all integrated circuits be handled with appropriate precautions. Failure to observe proper handling and installation procedures can cause damage.

ESD damage can range from subtle performance degradation to complete device failure. Precision integrated circuits may be more susceptible to damage because very small parametric changes could cause the device not to meet its published specifications.

### ORDERING INFORMATION<sup>(1)</sup>

| T <sub>A</sub> | PACKAGE <sup>(2)</sup> |              | ORDERABLE PART NUMBER | TOP-SIDE MARKING |
|----------------|------------------------|--------------|-----------------------|------------------|
| -40°C to 85°C  | QFN – RHL              | Reel of 3000 | BQ24105IRHLRQ1        | BQ24105          |

- (1) For the most current package and ordering information, see the Package Option Addendum at the end of this document, or see the TI web site at [www.ti.com](http://www.ti.com).
- (2) Package drawings, thermal data, and symbolization are available at [www.ti.com/packaging](http://www.ti.com/packaging).

### ABSOLUTE MAXIMUM RATINGS<sup>(1)</sup>

over operating free-air temperature range (unless otherwise noted)

|  |  |                |
|--|--|----------------|
| Supply voltage range (with respect to V <sub>SS</sub> )                              | IN, VCC  | 20 V           |
| Input voltage range (with respect to V <sub>SS</sub> and PGND)                       | STAT1, STAT2, $\overline{\text{PG}}$ , $\overline{\text{CE}}$ , SNS, BAT | -0.3 V to 20 V |
|  | OUT  | -0.7 V to 20 V |
|  | TS, TTC  | 7 V            |
|  | VTSB   | 3.6 V          |
|  | ISET1, ISET2   | 3.3 V          |
| Voltage difference between SNS and BAT inputs (V <sub>SNS</sub> – V <sub>BAT</sub> ) |  | ±1 V           |
| Output sink  | STAT1, STAT2, $\overline{\text{PG}}$                                     | 10 mA          |
| Output current (average)   | OUT  | 2.2 A          |
| T <sub>A</sub> Operating free-air temperature range                                  |  | -40°C to 85°C  |
| T <sub>J</sub> Junction temperature range  |  | -40°C to 125°C |
| T <sub>stg</sub> Storage temperature   |  | -65°C to 150°C |
| Lead temperature 1,6 mm (1/16 inch) from case for 10 seconds                         |  | 300°C          |

- (1) Stresses beyond those listed under *absolute maximum ratings* may cause permanent damage to the device. These are stress ratings only, and functional operation of the device at these or any other conditions beyond those indicated under *recommended operating conditions* is not implied. Exposure to absolute-maximum-rated conditions for extended periods may affect device reliability.

### PACKAGE DISSIPATION RATINGS

| PACKAGE            | θ <sub>JA</sub> | θ <sub>JC</sub> | T <sub>A</sub> < 40°C<br>POWER RATING | DERATING FACTOR<br>ABOVE T <sub>A</sub> = 40°C |
|--------------------|-----------------|-----------------|---------------------------------------|--|
| RHL <sup>(1)</sup> | 46.87°C/W       | 2.5°C/W         | 1.81 W                                | 0.021 W/°C                                     |

- (1) This data is based on using the JEDEC High-K board, and the exposed die pad is connected to a copper pad on the board. This is connected to the ground plane by a 2x3 via matrix.

### RECOMMENDED OPERATING CONDITIONS

|   | MIN                 | MAX               | UNIT |
|---|---------------------|-------------------|------|
| Supply voltage, V <sub>CC</sub> and IN (Tie together) | 4.35 <sup>(1)</sup> | 16 <sup>(2)</sup> | V    |
| Operating junction temperature range, T <sub>J</sub>  | -40                 | 125               | °C   |

- (1) The IC continues to operate below V<sub>min</sub>, to 3.5 V, but the specifications are not tested and not specified.
- (2) The inherent switching noise voltage spikes should not exceed the absolute maximum rating on either the IN or OUT pins. A *tight* layout minimizes switching noise.

### ELECTRICAL CHARACTERISTICS

T<sub>J</sub> = 0°C to 125°C and recommended supply voltage range (unless otherwise stated)

| PARAMETER             | TEST CONDITIONS | MIN | TYP | MAX | UNIT |
|-----------------------|-----------------|-----|-----|-----|------|
| <b>Input Currents</b> |                 |     |     |     |      |

**ELECTRICAL CHARACTERISTICS (continued)**
 $T_J = 0^\circ\text{C}$  to  $125^\circ\text{C}$  and recommended supply voltage range (unless otherwise stated)

| PARAMETER   |   | TEST CONDITIONS   | MIN   | TYP  | MAX  | UNIT                         |
|---|---|---|-------|------|------|------------------------------|
| $I_{(VCC)}$   | $V_{CC}$ supply current   | $V_{CC} > V_{CC(\min)}$ , PWM switching   |       | 10   |      | mA                           |
|   |   | $V_{CC} > V_{CC(\min)}$ , PWM NOT switching   |       |      | 5    |                              |
|   |   | $V_{CC} > V_{CC(\min)}$ , $\overline{CE} = \text{HIGH}$   |       |      |      | 315                          |
| $I_{(SLP)}$   | Battery discharge sleep current, (SNS, BAT, OUT, FB pins)                                       | $0^\circ\text{C} \leq T_J \leq 65^\circ\text{C}$ , $V_{I(\text{BAT})} = 4.2\text{ V}$ , $V_{CC} < V_{(SLP)}$ or $V_{CC} > V_{(SLP)}$ but not in charge  |       |      | 3.5  | $\mu\text{A}$                |
|   |   | $0^\circ\text{C} \leq T_J \leq 65^\circ\text{C}$ , $V_{I(\text{BAT})} = 8.4\text{ V}$ , $V_{CC} < V_{(SLP)}$ or $V_{CC} > V_{(SLP)}$ but not in charge  |       |      | 5.5  |                              |
|   |   | $0^\circ\text{C} \leq T_J \leq 65^\circ\text{C}$ , $V_{I(\text{BAT})} = 12.6\text{ V}$ , $V_{CC} < V_{(SLP)}$ or $V_{CC} > V_{(SLP)}$ but not in charge   |       |      | 7.7  |                              |
| <b>Voltage Regulation</b>                             |   |   |       |      |      |                              |
| $V_{\text{IBAT}}$                                     | Feedback regulation REF for bq24105 (W/FB)  | $I_{\text{IBAT}} = 25\text{ nA}$ typical into pin   |       | 2.1  |      | V                            |
|   | Voltage regulation accuracy   | $T_A = 25^\circ\text{C}$  | -0.5% |      | 0.5% |                              |
|   |   |   | -1%   |      | 1%   |                              |
| <b>Current Regulation - Fast Charge</b>               |   |   |       |      |      |                              |
| $I_{\text{OCHARGE}}$                                  | Output current range of converter   | $V_{\text{LOWV}} \leq V_{I(\text{BAT})} < V_{\text{OREG}}$ , $V_{(VCC)} - V_{I(\text{BAT})} > V_{(\text{DO-MAX})}$  | 150   |      | 2000 | mA                           |
| $V_{\text{IREG}}$                                     | Voltage regulated across $R_{(\text{SNS})}$ Accuracy  | $100\text{ mV} \leq V_{\text{IREG}} \leq 200\text{ mV}$ ,<br>$V_{\text{IREG}} = \frac{1V}{R_{\text{SET1}}} \times 1000,$ Programmed Where<br>$5\text{ k}\Omega \leq R_{\text{SET1}} \leq 10\text{ k}\Omega$ , Select RSET1 to program $V_{\text{IREG}}$ ,<br>$V_{\text{IREG}(\text{measured})} = I_{\text{OCHARGE}} + R_{\text{SNS}}$<br>(-10% to 10% excludes errors due to RSET1 and $R_{(\text{SNS})}$ tolerances)                   | -10%  |      | 10%  |                              |
| $V_{(\text{ISET1})}$                                  | Output current set voltage  | $V_{(\text{LOWV})} \leq V_{I(\text{BAT})} \leq V_{\text{O}(\text{REG})}$ ,<br>$V_{(VCC)} \leq V_{I(\text{BAT})} \times V_{(\text{DO-MAX})}$   |       | 1    |      | V                            |
| $K_{(\text{ISET1})}$                                  | Output current set factor   | $V_{\text{LOWV}} \leq V_{I(\text{BAT})} < V_{\text{O}(\text{REG})}$ ,<br>$V_{(VCC)} \leq V_{I(\text{BAT})} + V_{(\text{DO-MAX})}$   |       | 1000 |      | V/A                          |
| <b>Precharge and Short-Circuit Current Regulation</b> |   |   |       |      |      |                              |
| $V_{\text{LOWV}}$                                     | Precharge to fast-charge transition voltage threshold, BAT, bq24100/03/03A/04/05/08/09 ICs only |   | 68    | 71.4 | 75   | $\%V_{\text{O}(\text{REG})}$ |
| $t$   | Deglitch time for precharge to fast charge transition,  | Rising voltage;<br>$t_{\text{RISE}}$ , $t_{\text{FALL}} = 100\text{ ns}$ , 2-mV overdrive   | 20    | 30   | 40   | ms                           |
| $I_{\text{OPRECHG}}$                                  | Precharge range   | $V_{I(\text{BAT})} < V_{\text{LOWV}}$ , $t < t_{\text{PRECHG}}$   | 15    |      | 200  | mA                           |
| $V_{(\text{ISET2})}$                                  | Precharge set voltage, ISET2  | $V_{I(\text{BAT})} < V_{\text{LOWV}}$ , $t < t_{\text{PRECHG}}$   |       | 100  |      | mV                           |
| $K_{(\text{ISET2})}$                                  | Precharge current set factor  |   |       | 1000 |      | V/A                          |
| $V_{\text{IREG-PRE}}$                                 | Voltage regulated across $R_{\text{SNS}}$ -Accuracy   | $100\text{ mV} \leq V_{\text{IREG-PRE}} \leq 100\text{ mV}$ ,<br>$V_{\text{IREG-PRE}} = \frac{0.1V}{R_{\text{SET2}}} \times 1000,$ (PGM) Where<br>$1.2\text{ k}\Omega \leq R_{\text{SET2}} \leq 10\text{ k}\Omega$ , Select RSET1 to program $V_{\text{IREG-PRE}}$ ,<br>$V_{\text{IREG-PRE}(\text{Measured})} = I_{\text{OPRECHG}} \times R_{\text{SNS}}$<br>(-20% to 20% excludes errors due to RSET1 and $R_{\text{SNS}}$ tolerances) | -20%  |      | 20%  |                              |
| <b>Charge Termination (Current Taper) Detection</b>   |   |   |       |      |      |                              |
| $I_{\text{TERM}}$                                     | Charge current termination detection range  | $V_{I(\text{BAT})} > V_{\text{RCH}}$  | 15    |      | 200  | mA                           |
| $V_{\text{TERM}}$                                     | Charge termination detection set voltage, ISET2   | $V_{I(\text{BAT})} > V_{\text{RCH}}$  |       | 100  |      | mV                           |
| $K_{(\text{ISET2})}$                                  | Termination current set factor  |   |       | 1000 |      | V/A                          |
|   | Charger termination accuracy  | $V_{I(\text{BAT})} > V_{\text{RCH}}$  | -20%  |      | 20%  |                              |
| $t_{\text{dg-TERM}}$                                  | Deglitch time for charge termination  | Both rising and falling,<br>2-mV overdrive $t_{\text{RISE}}$ , $t_{\text{FALL}} = 100\text{ ns}$  | 20    | 30   | 40   | ms                           |
| <b>Temperature Comparator and VTSB Bias Regulator</b> |   |   |       |      |      |                              |

## ELECTRICAL CHARACTERISTICS (continued)

T<sub>J</sub> = 0°C to 125°C and recommended supply voltage range (unless otherwise stated)

| PARAMETER  |  | TEST CONDITIONS  | MIN   | TYP   | MAX             | UNIT    |
|--|--|--|-------|-------|-----------------|---------|
| % <sub>LTF</sub>                                       | Cold temperature threshold, TS, % of bias        | $V_{LTF} = V_{O(VTSB)} \times \% LTF/100$  | 72.8% | 73.5% | 74.2%           |         |
| % <sub>HTF</sub>                                       | Hot temperature threshold, TS, % of bias         | $V_{HTF} = V_{O(VTSB)} \times \% HTF/100$  | 33.7% | 34.4% | 35.1%           |         |
| % <sub>TCO</sub>                                       | Cutoff temperature threshold, TS, % of bias      | $V_{TCO} = V_{O(VTSB)} \times \% TCO/100$  | 28.7% | 29.3% | 29.9%           |         |
|  | LTF hysteresis                                   |  | 0.5%  | 1%    | 1.5%            |         |
| t <sub>dg-TS</sub>                                     | Deglitch time for temperature fault, TS          | Both rising and falling,<br>2-mV overdrive t <sub>RISE</sub> , t <sub>FALL</sub> = 100 ns                    | 20    | 30    | 40              | ms      |
| V <sub>O(VTSB)</sub>                                   | TS bias output voltage                           | V <sub>CC</sub> > V <sub>IN(min)</sub> ,<br>I <sub>(VTSB)</sub> = 10 mA 0.1 μF ≤ C <sub>O(VTSB)</sub> ≤ 1 μF |       | 3.15  |                 | V       |
| V <sub>O(VTSB)</sub>                                   | TS bias voltage regulation accuracy              | V <sub>CC</sub> > V <sub>IN(min)</sub> ,<br>I <sub>(VTSB)</sub> = 10 mA 0.1 μF ≤ C <sub>O(VTSB)</sub> ≤ 1 μF | -10%  |       | 10%             |         |
| <b>Battery Recharge Threshold</b>                      |  |  |       |       |                 |         |
| V <sub>RCH</sub>                                       | Recharge threshold voltage                       | Below V <sub>OREG</sub>  | 75    | 100   | 125             | mV/cell |
| t <sub>dg-RCH</sub>                                    | Deglitch time                                    | V <sub>(BAT)</sub> < decreasing below threshold,<br>t <sub>FALL</sub> = 100 ns 10-mV overdrive               | 20    | 30    | 40              | ms      |
| <b>Stat1, Stat2, and P<math>\bar{G}</math> Outputs</b> |  |  |       |       |                 |         |
| V <sub>OL(STATx)</sub>                                 | Low-level output saturation voltage, STATx       | I <sub>O</sub> = 5 mA  |       |       | 0.5             | V       |
| V <sub>OL(P<math>\bar{G}</math>)</sub>                 | Low-level output saturation voltage, P $\bar{G}$ | I <sub>O</sub> = 10 mA   |       |       | 0.1             |         |
| <b>C<math>\bar{E}</math> Input</b>                     |  |  |       |       |                 |         |
| V <sub>IL</sub>  | Low-level input voltage                          | I <sub>IL</sub> = 5 μA   | 0     |       | 0.4             | V       |
| V <sub>IH</sub>  | High-level input voltage                         | I <sub>IH</sub> = 20 μA  | 1.3   |       | V <sub>CC</sub> |         |
| <b>TTC Input</b>                                       |  |  |       |       |                 |         |
| t <sub>PRECHG</sub>                                    | Precharge timer                                  |  | 1440  | 1800  | 2160            | s       |
| t <sub>CHARGE</sub>                                    | Programmable charge timer range                  | t <sub>(CHG)</sub> = C <sub>(TTC)</sub> × K <sub>(TTC)</sub>   | 25    |       | 572             | minutes |
|  | Charge timer accuracy                            | 0.01 μF ≤ C <sub>(TTC)</sub> ≤ 0.18 μF   | -10%  |       | 10%             |         |
| K <sub>TTC</sub>                                       | Timer multiplier                                 |  |       | 2.6   |                 | min/nF  |
| C <sub>TTC</sub>                                       | Charge time capacitor range                      |  | 0.01  |       | 0.22            | μF      |
| V <sub>TTC_EN</sub>                                    | TTC enable threshold voltage                     | V <sub>(TTC)</sub> rising  |       | 200   |                 | mV      |

**ELECTRICAL CHARACTERISTICS (continued)**
 $T_J = 0^\circ\text{C}$  to  $125^\circ\text{C}$  and recommended supply voltage range (unless otherwise stated)

| PARAMETER                |   | TEST CONDITIONS  | MIN  | TYP  | MAX   | UNIT                  |
|--------------------------|---|--|--|------|---|-----------------------|
| <b>Sleep Comparator</b>  |   |  |  |      |   |                       |
| $V_{\text{SLP-ENT}}$     | Sleep-mode entry threshold  | $2.3\text{ V} \leq V_{\text{I(OUT)}} \leq V_{\text{OREG}}$ , for 1 or 2 cells  | $V_{\text{CC}} \leq V_{\text{IBAT}} + 5\text{ mV}$ |      | $V_{\text{CC}} \leq V_{\text{IBAT}} + 75\text{ mV}$ | V                     |
|                          |   | $V_{\text{I(OUT)}} = 12.6\text{ V}$ , $R_{\text{IN}} = 1\text{ k}\Omega$<br>bq24105/15 <sup>(1)</sup>                      | $V_{\text{CC}} \leq V_{\text{IBAT}} - 4\text{ mV}$ |      | $V_{\text{CC}} \leq V_{\text{IBAT}} + 73\text{ mV}$ |                       |
| $V_{\text{SLP-EXIT}}$    | Sleep-mode exit hysteresis,   | $2.3\text{ V} \leq V_{\text{I(OUT)}} \leq V_{\text{OREG}}$   | 40   |      | 160   | mV                    |
| $t_{\text{dg-SLP}}$      | Deglitch time for sleep mode  | $V_{\text{CC}}$ decreasing below threshold,<br>$t_{\text{FALL}} = 100\text{ ns}$ , 10-mV overdrive,<br>PMOS turns off      |  | 5    |   | $\mu\text{s}$         |
|                          |   | $V_{\text{CC}}$ decreasing below threshold,<br>$t_{\text{FALL}} = 100\text{ ns}$ , 10-mV overdrive,<br>STATx pins turn off | 20   | 30   | 40  | ms                    |
| <b>UVLO</b>              |   |  |  |      |   |                       |
| $V_{\text{UVLO-ON}}$     | IC active threshold voltage   | $V_{\text{CC}}$ rising   | 3.15   | 3.30 | 3.50  | V                     |
|                          | IC active hysteresis  | $V_{\text{CC}}$ falling  | 120  | 150  |   | mV                    |
| <b>PWM</b>               |   |  |  |      |   |                       |
|                          | Internal P-channel MOSFET on-resistance   | $7\text{ V} \leq V_{\text{CC}} \leq V_{\text{CC(max)}}$  |  |      | 400   | m $\Omega$            |
|                          |   | $4.5\text{ V} \leq V_{\text{CC}} \leq 7\text{ V}$  |  |      | 500   |                       |
|                          | Internal N-channel MOSFET on-resistance   | $7\text{ V} \leq V_{\text{CC}} \leq V_{\text{CC(max)}}$  |  |      | 130   |                       |
|                          |   | $4.5\text{ V} \leq V_{\text{CC}} \leq 7\text{ V}$  |  |      | 150   |                       |
| $f_{\text{OSC}}$         | Oscillator frequency  |  |  | 1.1  |   | MHz                   |
|                          | Frequency accuracy  |  | -9%  |      | 9%  |                       |
| $D_{\text{MAX}}$         | Maximum duty cycle  |  |  |      | 100%  |                       |
| $D_{\text{MIN}}$         | Minimum duty cycle  |  | 0%   |      |   |                       |
| $t_{\text{TOD}}$         | Switching delay time (turn on)  |  |  | 20   |   | ns                    |
| $t_{\text{syncmin}}$     | Minimum synchronous FET on time   |  |  | 60   |   | ns                    |
|                          | Synchronous FET minimum current-off threshold <sup>(2)</sup>                                    |  | 50   |      | 400   | mA                    |
| <b>Battery Detection</b> |   |  |  |      |   |                       |
| $I_{\text{DETECT}}$      | Battery detection current during time-out fault   | $V_{\text{I(BAT)}} < V_{\text{OREG}} - V_{\text{RCH}}$   |  | 2    |   | mA                    |
| $I_{\text{DISCHRG1}}$    | Discharge current   | $V_{\text{SHORT}} < V_{\text{I(BAT)}} < V_{\text{OREG}} - V_{\text{RCH}}$  |  | 400  |   | $\mu\text{A}$         |
| $t_{\text{DISCHRG1}}$    | Discharge time  | $V_{\text{SHORT}} < V_{\text{I(BAT)}} < V_{\text{OREG}} - V_{\text{RCH}}$  |  | 1    |   | s                     |
| $I_{\text{WAKE}}$        | Wake current  | $V_{\text{SHORT}} < V_{\text{I(BAT)}} < V_{\text{OREG}} - V_{\text{RCH}}$  |  | 2    |   | mA                    |
| $t_{\text{WAKE}}$        | Wake time   | $V_{\text{SHORT}} < V_{\text{I(BAT)}} < V_{\text{OREG}} - V_{\text{RCH}}$  |  | 0.5  |   | s                     |
| $I_{\text{DISCHRG2}}$    | Termination discharge current   | Begins after termination detected,<br>$V_{\text{I(BAT)}} \leq V_{\text{OREG}}$   |  | 400  |   | $\mu\text{A}$         |
| $t_{\text{DISCHRG2}}$    | Termination time  |  |  | 262  |   | ms                    |
| <b>Output Capacitor</b>  |   |  |  |      |   |                       |
| $C_{\text{OUT}}$         | Required output ceramic capacitor range from SNS to PGND, between inductor and $R_{\text{SNS}}$ |  | 4.7  | 10   | 47  | $\mu\text{F}$         |
| $C_{\text{SNS}}$         | Required SNS capacitor (ceramic) at SNS pin   |  |  | 0.1  |   | $\mu\text{F}$         |
| <b>Protection</b>        |   |  |  |      |   |                       |
| $V_{\text{OVP}}$         | OVP threshold voltage   | Threshold over $V_{\text{OREG}}$ to turn off P-channel MOSFET, STAT1, and STAT2 during charge or termination states        | 110  | 117  | 121   | $\%V_{\text{O(REG)}}$ |
| $I_{\text{LIMIT}}$       | Cycle-by-cycle current limit  |  | 2.6  | 3.6  | 4.5   | A                     |
| $V_{\text{SHORT}}$       | Short-circuit voltage threshold, BAT  | $V_{\text{I(BAT)}}$ falling  | 1.95   | 2    | 2.05  | V/cell                |
| $I_{\text{SHORT}}$       | Short-circuit current   | $V_{\text{I(BAT)}} \leq V_{\text{SHORT}}$  | 35   |      | 65  | mA                    |
| $T_{\text{SHTDWN}}$      | Thermal trip  |  |  | 165  |   | $^\circ\text{C}$      |
|                          | Thermal hysteresis  |  |  | 10   |   | $^\circ\text{C}$      |

(1) For bq24105 and bq24115 only.  $R_{\text{IN}}$  is connected between IN and PGND pins and needed to ensure sleep entry.

(2) N-channel always turns on for ~60 ns and then turns off if current is too low.

### TERMINAL FUNCTIONS

| TERMINAL               |        | I/O | DESCRIPTION  |
|------------------------|--------|-----|--|
| NAME                   | NO.    |     |  |
| BAT                    | 14     | I   | Battery voltage sense input. Bypass it with a 0.1 $\mu$ F capacitor to PGND if there are long <i>inductive</i> leads to battery.   |
| $\overline{\text{CE}}$ | 16     | I   | Charger enable input. This active low input, if set high, suspends charge and places the device in the low-power sleep mode. Do not pull up this input to VTSB.  |
| FB                     | 13     | I   | Output voltage analog feedback adjustment. Connect the output of a resistive voltage divider powered from the battery terminals to this node to adjust the output battery voltage regulation.  |
| IN                     | 3, 4   | I   | Charger input voltage.   |
| ISET1                  | 8      | I/O | Charger current set point 1 (fast charge). Use a resistor to ground to set this value.   |
| ISET2                  | 9      | I/O | Charge current set point 2 (precharge and termination), set by a resistor connected to ground.   |
| OUT                    | 1, 20  | O   | Charge current output inductor connection. Connect a zener TVS diode between OUT pin and PGND pin to clamp the voltage spike to protect the power MOSFETs during abnormal conditions.  |
| $\overline{\text{PG}}$ | 5      | O   | Power-good status output (open drain). The transistor turns on when a valid $V_{\text{CC}}$ is detected. It is turned off in the sleep mode. $\overline{\text{PG}}$ can be used to drive a LED or communicate with a host processor.   |
| PGND                   | 17, 18 |     | Power ground input   |
| SNS                    | 15     | I   | Charge current-sense input. Battery current is sensed via the voltage drop developed on this pin by an external sense resistor in series with the battery pack. A 0.1- $\mu$ F capacitor to PGND is required.  |
| STAT1                  | 2      | O   | Charge status 1 (open-drain output). When the transistor turns on indicates charge in process. When it is off and with the condition of STAT2 indicates various charger conditions (see <a href="#">Table 1</a> ).   |
| STAT2                  | 19     | O   | Charge status 2 (open-drain output). When the transistor turns on indicates charge is done. When it is off and with the condition of STAT1 indicates various charger conditions (see <a href="#">Table 1</a> ).  |
| TS                     | 12     | I   | Temperature sense input. This input monitors its voltage against an internal threshold to determine if charging is allowed. Use an NTC thermistor and a voltage divider powered from VTSB to develop this voltage (see <a href="#">Figure 6</a> ).   |
| TTC                    | 7      | I   | Timer and termination control. Connect a capacitor from this node to GND to set the bqSWITCHER timer. When this input is low, the timer and termination detection are disabled.  |
| VCC                    | 6      | I   | Analog device input. A 0.1- $\mu$ F capacitor to VSS is required.  |
| VSS                    | 10     |     | Analog ground input  |
| VTSB                   | 11     | O   | TS internal bias regulator voltage. Connect capacitor (with a value between a 0.1- $\mu$ F and 1- $\mu$ F) between this output and VSS.  |
| Exposed Thermal Pad    | Pad    |     | There is an internal electrical connection between the exposed thermal pad and VSS. The exposed thermal pad must be connected to the same potential as the VSS pin on the printed circuit board. The power pad can be used as a <i>star</i> ground connection between $V_{\text{SS}}$ and PGND. A common ground plane may be used. VSS pin must be connected to ground at all times. |

TYPICAL APPLICATION CIRCUIT

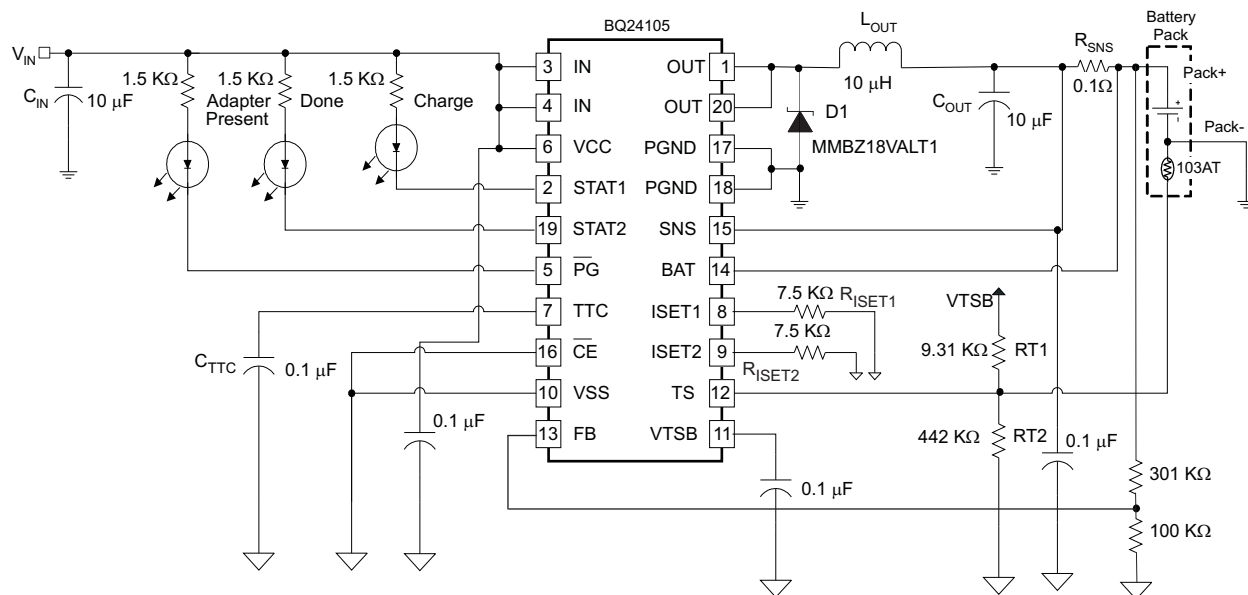


Figure 1. Stand-Alone 2-Cell Application

### TYPICAL OPERATING PERFORMANCE

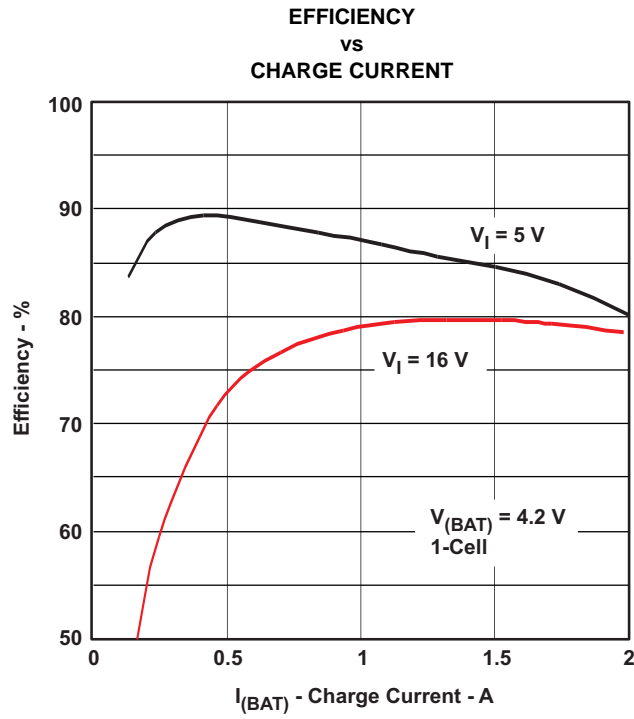


Figure 2.

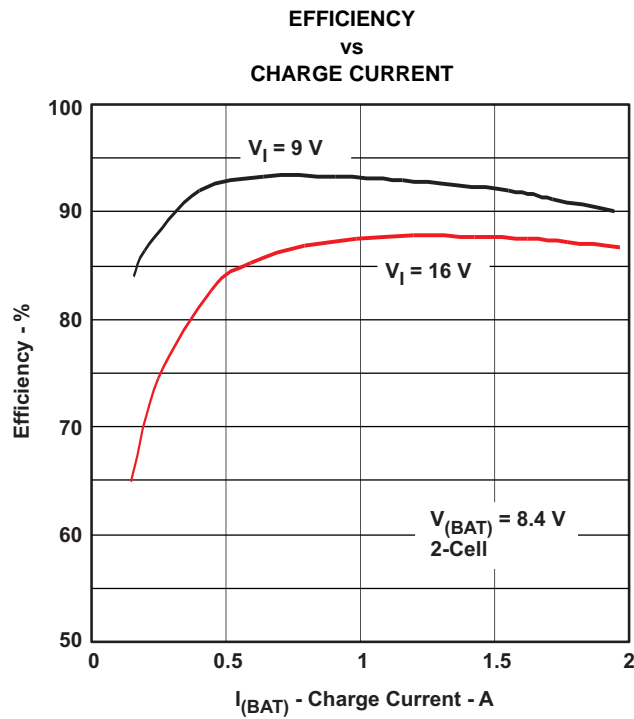
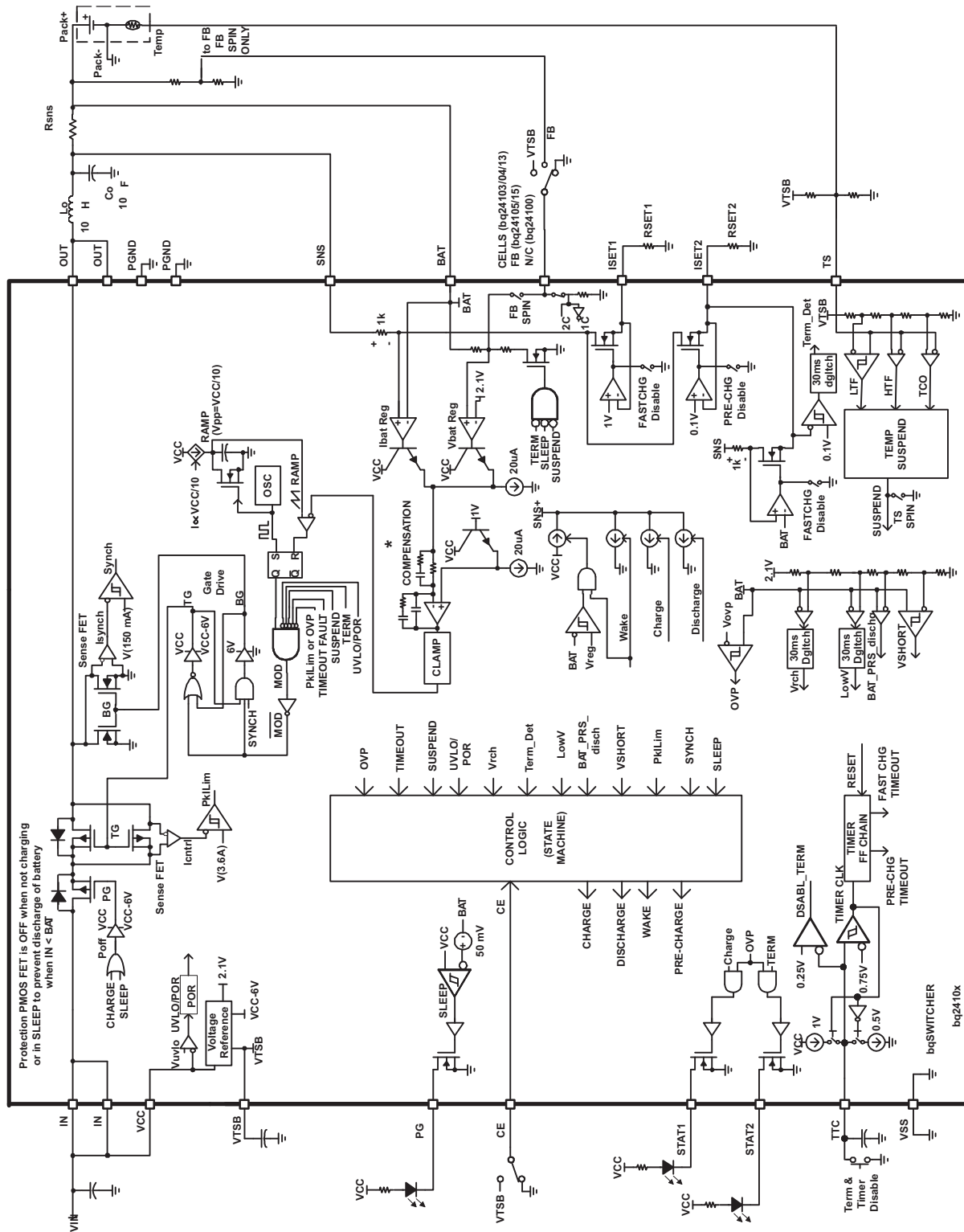


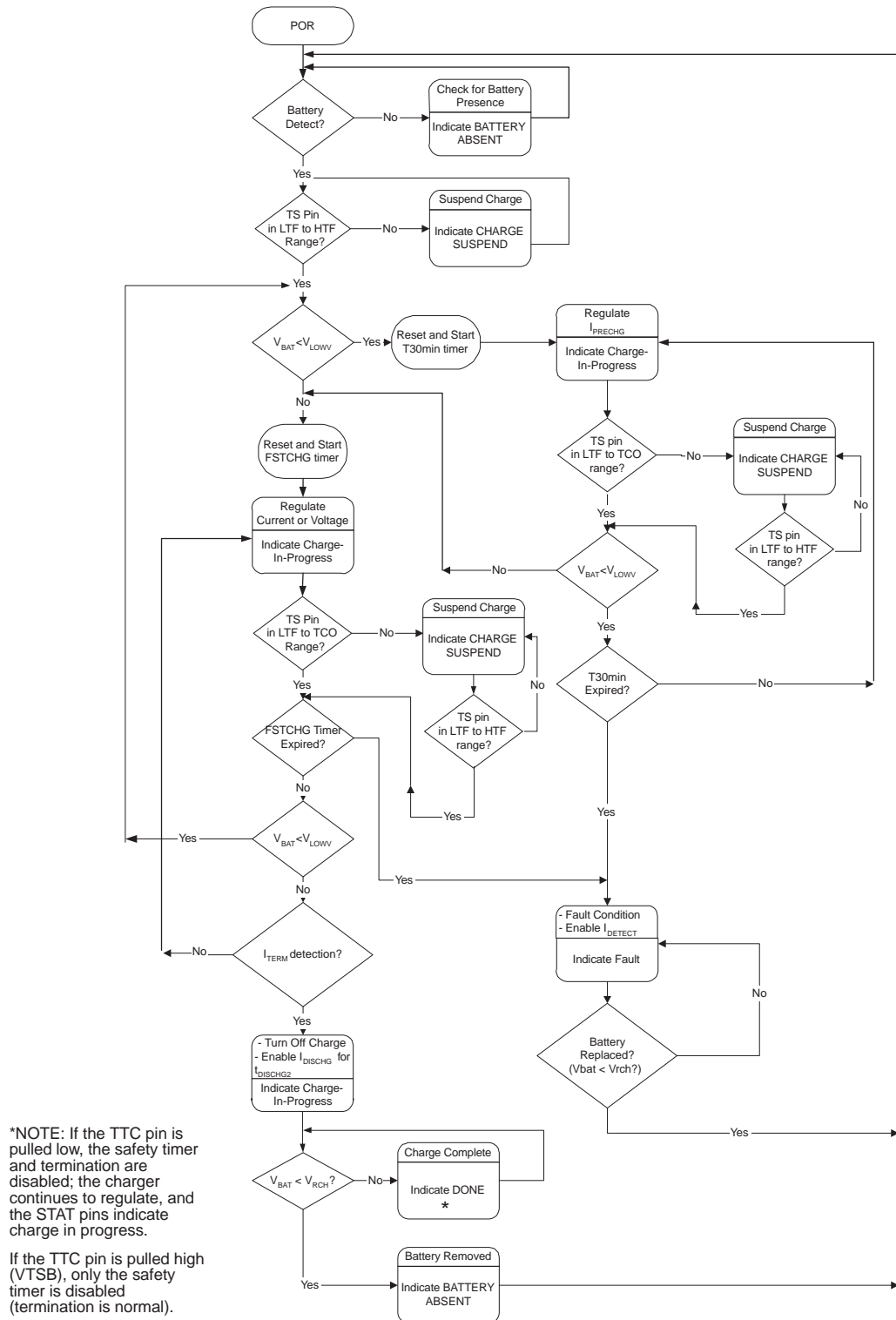
Figure 3.

FUNCTIONAL BLOCK DIAGRAM



\*Patent Pending #36889  
bq2410x

OPERATIONAL FLOW CHART



\*NOTE: If the TTC pin is pulled low, the safety timer and termination are disabled; the charger continues to regulate, and the STAT pins indicate charge in progress.  
 If the TTC pin is pulled high (VTSB), only the safety timer is disabled (termination is normal).

Figure 4. Stand-Alone Version Operational Flow Chart

## DETAILED DESCRIPTION

The bqSWITCHER™ supports a precision Li-ion or Li-polymer charging system for one-, two-, or three-cell applications. See Figure 4 for a typical charge profile.

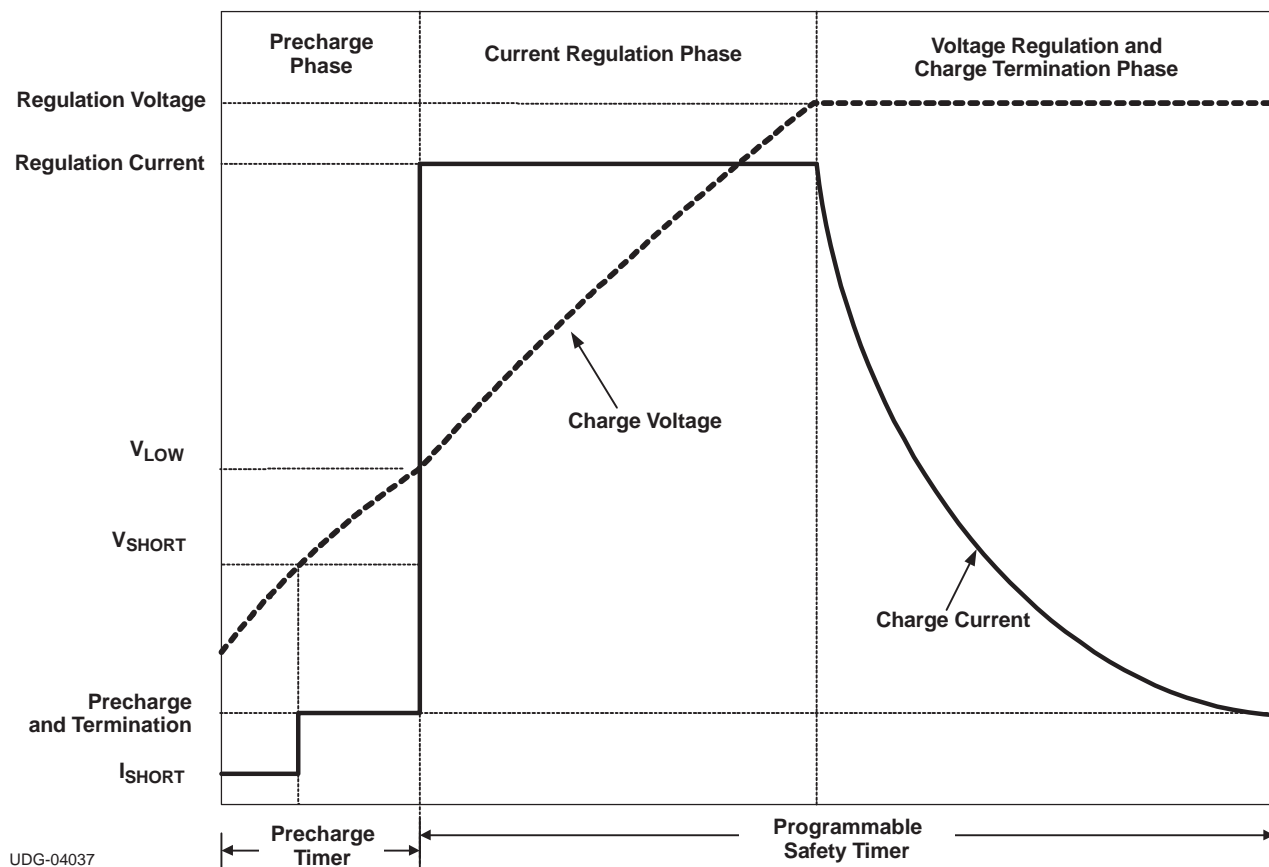


Figure 5. Typical Charging Profile

## PWM Controller

The bq24105 provides an integrated fixed 1MHz frequency voltage-mode controller with Feed-Forward function to regulate charge current or voltage. This type of controller is used to help improve line transient response, thereby simplifying the compensation network used for both continuous and discontinuous current conduction operation. The voltage and current loops are internally compensated using a Type-III compensation scheme that provides enough phase boost for stable operation, allowing the use of small ceramic capacitors with very low ESR. There is a 0.5-V offset on the bottom of the PWM ramp to allow the device to operate between 0% to 100% duty cycle.

The internal PWM gate drive can directly control the internal PMOS and NMOS power MOSFETs. The high-side gate voltage swings from  $V_{CC}$  (when off), to  $V_{CC} - 6$  (when on and  $V_{CC}$  is greater than 6 V) to help reduce the conduction losses of the converter by enhancing the gate an extra volt beyond the standard 5V. The low-side gate voltage swings from 6 V, to turn on the NMOS, down to PGND to turn it off. The bq24105 has two back to back common-drain P-MOSFETs on the high side. An input P-MOSFET prevents battery discharge when IN is lower than BAT. The second P-MOSFET behaves as the switching control FET, eliminating the need of a bootstrap capacitor.

Cycle-by-cycle current limit is sensed through the internal high-side sense FET. The threshold is set to a nominal 3.6A peak current. The low-side FET also has a current limit that decides if the PWM Controller will operate in synchronous or non-synchronous mode. This threshold is set to 100mA and it turns off the low-side NMOS before the current reverses, preventing the battery from discharging. Synchronous operation is used when the current of the low-side FET is greater than 100mA to minimize power losses.

### Temperature Qualification

The bqSWITCHER continuously monitors battery temperature by measuring the voltage between the TS pin and VSS pin. A negative temperature coefficient thermistor (NTC) and an external voltage divider typically develop this voltage. The bqSWITCHER compares this voltage against its internal thresholds to determine if charging is allowed. To initiate a charge cycle, the battery temperature must be within the  $V_{(LTF)}$ -to- $V_{(HTF)}$  thresholds. If battery temperature is outside of this range, the bqSWITCHER suspends charge and waits until the battery temperature is within the  $V_{(LTF)}$ -to- $V_{(HTF)}$  range. During the charge cycle (both precharge and fast charge), the battery temperature must be within the  $V_{(LTF)}$ -to- $V_{(TCO)}$  thresholds. If battery temperature is outside of this range, the bqSWITCHER suspends charge and waits until the battery temperature is within the  $V_{(LTF)}$ -to- $V_{(HTF)}$  range. The bqSWITCHER suspends charge by turning off the PWM and holding the timer value (i.e., timers are not reset during a suspend condition). Note that the bias for the external resistor divider is provided from the VTSB output. Applying a constant voltage between the  $V_{(LTF)}$ -to- $V_{(HTF)}$  thresholds to the TS pin disables the temperature-sensing feature.

$$RT2 = \frac{V_{O(VTSB)} \times RTH_{COLD} \times RTH_{HOT} \times \left[ \frac{1}{V_{LTF}} - \frac{1}{V_{HTF}} \right]}{RTH_{HOT} \times \left( \frac{V_{O(VTSB)}}{V_{HTF}} - 1 \right) - RTH_{COLD} \times \left( \frac{V_{O(VTSB)}}{V_{LTF}} - 1 \right)}$$

$$RT1 = \frac{\frac{V_{O(VTSB)}}{V_{LTF}} - 1}{\frac{1}{RT2} + \frac{1}{RTH_{COLD}}}$$

Where:

$$V_{LTF} = V_{O(VTSB)} \times \%_{LTF+100} / 100$$

$$V_{HTF} = V_{O(VTSB)} \times \%_{HTF+100} / 100$$

(1)

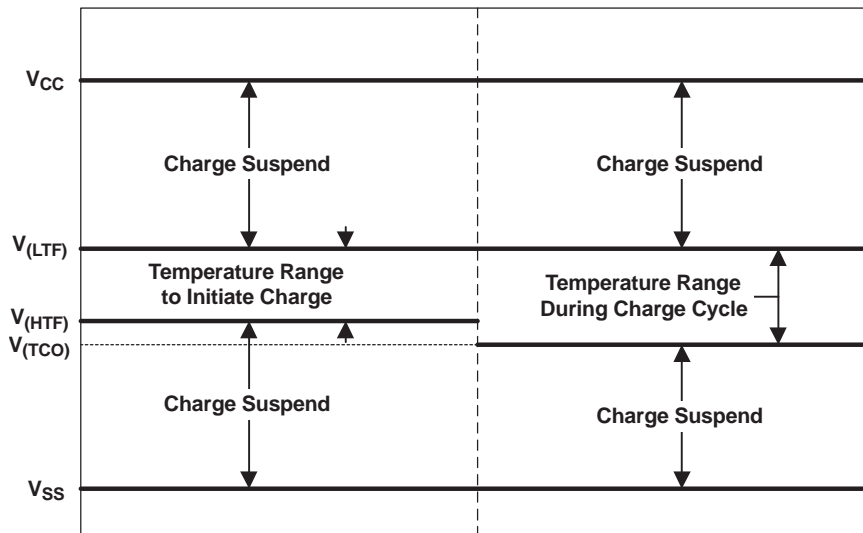


Figure 6. TS Pin Thresholds

### Battery Preconditioning (Precharge)

On power up, if the battery voltage is below the  $V_{LOWV}$  threshold, the bqSWITCHER applies a precharge current,  $I_{PRECHG}$ , to the battery. This feature revives deeply discharged cells. The bqSWITCHER activates a safety timer,  $t_{PRECHG}$ , during the conditioning phase. If the  $V_{LOWV}$  threshold is not reached within the timer period, the bqSWITCHER turns off the charger and enunciates FAULT on the STATx pins. In the case of a FAULT condition, the bqSWITCHER reduces the current to  $I_{DETECT}$ .  $I_{DETECT}$  is used to detect a battery replacement condition. Fault condition is cleared by POR or battery replacement.

The magnitude of the precharge current,  $I_{O(PRECHG)}$ , is determined by the value of programming resistor,  $R_{(ISET2)}$ , connected to the ISET2 pin.

$$I_{O(PRECHG)} = \frac{K_{(ISET2)} \times V_{(ISET2)}}{(R_{(ISET2)} \times R_{(SNS)})} \quad (2)$$

where

$R_{SNS}$  is the external current-sense resistor

$V_{(ISET2)}$  is the output voltage of the ISET2 pin

$K_{(ISET2)}$  is the V/A gain factor

$V_{(ISET2)}$  and  $K_{(ISET2)}$  are specified in the Electrical Characteristics table.

### Battery Charge Current

The battery charge current,  $I_{O(CHARGE)}$ , is established by setting the external sense resistor,  $R_{(SNS)}$ , and the resistor,  $R_{(ISET1)}$ , connected to the ISET1 pin.

In order to set the current, first choose  $R_{(SNS)}$  based on the regulation threshold  $V_{IREG}$  across this resistor. The best accuracy is achieved when the  $V_{IREG}$  is between 100 mV and 200 mV.

$$R_{(SNS)} = \frac{V_{IREG}}{I_{OCHARGE}} \quad (3)$$

If the results is not a standard sense resistor value, choose the next larger value. Using the selected standard value, solve for  $V_{IREG}$ . Once the sense resistor is selected, the ISET1 resistor can be calculated using the following equation:

$$R_{ISET1} = \frac{K_{ISET1} \times V_{ISET1}}{R_{SNS} \times I_{CHARGE}} \quad (4)$$

### Battery Voltage Regulation

The voltage regulation feedback occurs through the BAT pin. This input is tied directly to the positive side of the battery pack. The bqSWITCHER monitors the battery-pack voltage between the BAT and VSS pins.

Output regulation voltage is specified as:

$$V_{OREG} = \frac{(R1+R2)}{R2} \times V_{IBAT} \quad (5)$$

where R1 and R2 are resistor divider from BAT to FB and FB to VSS, respectively.

Recharge threshold voltage is specified as:

$$V_{RCH} = \frac{(R1 + R2)}{R2 \times 50 \text{ mV}} \quad (6)$$

## Charge Termination and Recharge

The bqSWITCHER monitors the charging current during the voltage regulation phase. Once the termination threshold,  $I_{\text{TERM}}$ , is detected, the bqSWITCHER terminates charge. The termination current level is selected by the value of programming resistor,  $R_{(\text{ISET2})}$ , connected to the ISET2 pin.

$$I_{\text{TERM}} = \frac{K_{(\text{ISET2})} \times V_{\text{TERM}}}{(R_{(\text{ISET2})} \times R_{(\text{SNS})})} \quad (7)$$

where

$R_{(\text{SNS})}$  is the external current-sense resistor

$V_{\text{TERM}}$  is the output of the ISET2 pin

$K_{(\text{ISET2})}$  is the A/V gain factor

$V_{\text{TERM}}$  and  $K_{(\text{ISET2})}$  are specified in the Electrical Characteristics table

As a safety backup, the bqSWITCHER also provides a programmable charge timer. The charge time is programmed by the value of a capacitor connected between the TTC pin and GND by the following formula:

$$t_{\text{CHARGE}} = C_{(\text{TTC})} \times K_{(\text{TTC})} \quad (8)$$

where

$C_{(\text{TTC})}$  is the capacitor connected to the TTC pin

$K_{(\text{TTC})}$  is the multiplier

A new charge cycle is initiated when one of the following conditions is detected:

- The battery voltage falls below the  $V_{\text{RCH}}$  threshold.
- Power-on reset (POR), if battery voltage is below the  $V_{\text{RCH}}$  threshold
- $\overline{\text{CE}}$  toggle
- TTC pin, described as follows.

In order to disable the charge termination and safety timer, the user can pull the TTC input below the  $V_{\text{TTC\_EN}}$  threshold. Going above this threshold enables the termination and safety timer features and also resets the timer. Tying TTC high disables the safety timer only.

## Sleep Mode

The bqSWITCHER enters the low-power sleep mode if the VCC pin is removed from the circuit. This feature prevents draining the battery during the absence of VCC.

## Charge Status Outputs

The open-drain STAT1 and STAT2 outputs indicate various charger operations as shown in Table 1. These status pins can be used to drive LEDs or communicate to the host processor. Note that OFF indicates that the open-drain transistor is turned off.

**Table 1. Status Pins Summary**

| Charge State   | STAT1 | STAT2 |
|--|-------|-------|
| Charge-in-progress   | ON    | OFF   |
| Charge complete  | OFF   | ON    |
| Charge suspend, timer fault, overvoltage, sleep mode, battery absent | OFF   | OFF   |

**Table 2. Status Pins Summary**

| Charge State   | STAT1           | STAT2 |
|--|-----------------|-------|
| Battery absent   | OFF             | OFF   |
| Charge-in-progress   | ON              | OFF   |
| Charge complete  | OFF             | ON    |
| Battery over discharge, $V_{I(BAT)} < V_{I(SC)}$               | ON/OFF (0.5 Hz) | OFF   |
| Charge suspend (due to TS pin and internal thermal protection) | ON/OFF (0.5 Hz) | OFF   |
| Precharge timer fault  | ON/OFF (0.5 Hz) | OFF   |
| Fast charge timer fault  | ON/OFF (0.5 Hz) | OFF   |
| Sleep mode   | OFF             | OFF   |

## $\overline{PG}$ Output

The open-drain  $\overline{PG}$  (power good) indicates when the AC-to-DC adapter (i.e.,  $V_{CC}$ ) is present. The output turns on when sleep-mode exit threshold,  $V_{SLP-EXIT}$ , is detected. This output is turned off in the sleep mode. The  $\overline{PG}$  pin can be used to drive an LED or communicate to the host processor.

## $\overline{CE}$ Input (Charge Enable)

The  $\overline{CE}$  digital input is used to disable or enable the charge process. A low-level signal on this pin enables the charge and a high-level  $V_{CC}$  signal disables the charge. A high-to-low transition on this pin also resets all timers and fault conditions. Note that the  $\overline{CE}$  pin cannot be pulled up to VTSB voltage. This may create power-up issues.

## Timer Fault Recovery

As shown in [Figure 6](#), bqSWITCHER provides a recovery method to deal with timer fault conditions. The following summarizes this method.

**Condition 1**  $V_{I(BAT)}$  above recharge threshold ( $V_{OREG} - V_{RCH}$ ) and timeout fault occurs.

Recovery method: bqSWITCHER waits for the battery voltage to fall below the recharge threshold. This could happen as a result of a load on the battery, self-discharge or battery removal. Once the battery falls below the recharge threshold, the bqSWITCHER clears the fault and enters the battery absent detection routine. A POR or  $\overline{CE}$  toggle also clears the fault.

**Condition 2** Charge voltage below recharge threshold ( $V_{OREG} - V_{RCH}$ ) and timeout fault occurs

Recovery method: Under this scenario, the bqSWITCHER applies the  $I_{DETECT}$  current. This small current is used to detect a battery removal condition and remains on as long as the battery voltage stays below the recharge threshold. If the battery voltage goes above the recharge threshold, then the bqSWITCHER disables the  $I_{DETECT}$  current and executes the recovery method described in Condition 1. Once the battery falls below the recharge threshold, the bqSWITCHER clears the fault and enters the battery absent detection routine. A POR or  $\overline{CE}$  toggle also clears the fault.

## Output Overvoltage Protection

The bqSWITCHER provides a built-in overvoltage protection to protect the device and other components against damages if the battery voltage gets too high, as when the battery is suddenly removed. When an overvoltage condition is detected, this feature turns off the PWM and STATx pins. The fault is cleared once  $V_{IBAT}$  drops to the recharge threshold ( $V_{OREG} - V_{RCH}$ ).

## Inductor, Capacitor, and Sense Resistor Selection Guidelines

The bqSWITCHER provides internal loop compensation. With this scheme, best stability occurs when LC resonant frequency,  $f_0$  is approximately 16 kHz (8 kHz to 32 kHz). [Equation 9](#) can be used to calculate the value of the output inductor and capacitor. [Table 3](#) provides a summary of typical component values for various charge rates.

$$f_0 = \frac{1}{2\pi \times \sqrt{L_{OUT} \times C_{OUT}}} \quad (9)$$

**Table 3. Output Components Summary**

| CHARGE CURRENT              | 0.5 A        | 1 A          | 2 A   |
|-----------------------------|--------------|--------------|---|
| Output inductor, $L_{OUT}$  | 22 $\mu$ H   | 10 $\mu$ H   | 4.7 $\mu$ H                                   |
| Output capacitor, $C_{OUT}$ | 4.7 $\mu$ F  | 10 $\mu$ F   | 22 $\mu$ F (or 2 $\times$ 10 $\mu$ F) ceramic |
| Sense resistor, $R_{(SNS)}$ | 0.2 $\Omega$ | 0.1 $\Omega$ | 0.05 $\Omega$                                 |

## Battery Detection

For applications with removable battery packs, bqSWITCHER provides a battery absent detection scheme to reliably detect insertion and/or removal of battery packs.

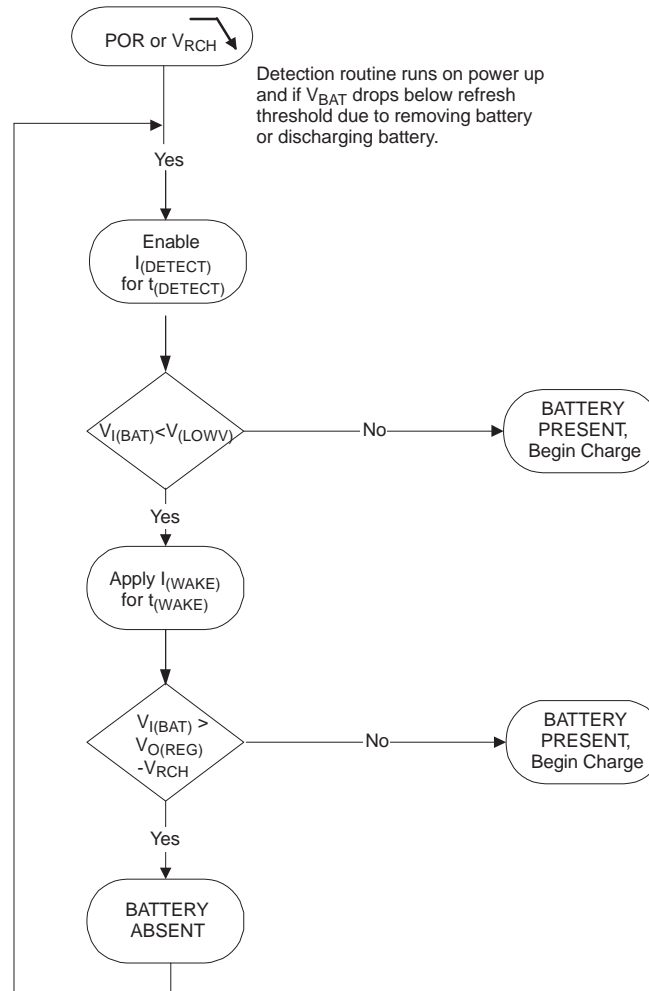


Figure 7. Battery Absent Detection

The voltage at the BAT pin is held above the battery recharge threshold,  $V_{OREG} - V_{RCH}$ , by the charged battery following fast charging. When the voltage at the BAT pin falls to the recharge threshold, either by a load on the battery or due to battery removal, the bqSWITCHER begins a battery absent detection test. This test involves enabling a detection current,  $I_{DISCHARGE1}$ , for a period of  $t_{DISCHARGE1}$  and checking to see if the battery voltage is below the short circuit threshold,  $V_{SHORT}$ . Following this, the wake current,  $I_{WAKE}$  is applied for a period of  $t_{WAKE}$  and the battery voltage is checked again to ensure that it is above the recharge threshold. The purpose of this current is to attempt to *close* an open battery pack protector, if one is connected to the bqSWITCHER.

Passing both of the discharge and charge tests indicates a battery absent fault at the STAT pins. Failure of either test starts a new charge cycle. For the absent battery condition, typically the voltage on the BAT pin rises and falls between 0V and  $V_{OVPT}$  thresholds indefinitely.

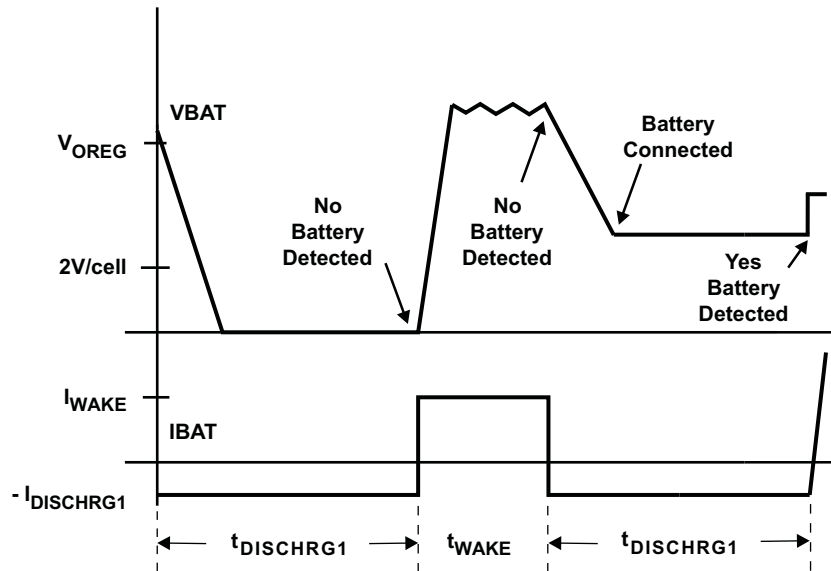


Figure 8. Battery Detect Timing Diagram

**Battery Detection Example**

In order to detect a *no battery* condition during the discharge and wake tests, the maximum output capacitance should not exceed the following:

- a. Discharge ( $I_{DISCHRG1} = 400 \mu A$ ,  $t_{DISCHRG1} = 1s$ ,  $V_{SHORT} = 2V$ )

$$C_{MAX\_DIS} = \frac{I_{DISCHRG1} \times t_{DISCHRG1}}{V_{OREG} - V_{SHORT}}$$

$$C_{MAX\_DIS} = \frac{400 \mu A \times 1s}{4.2V - 2V}$$

$$C_{MAX\_DIS} = 182 \mu F$$

(10)

- b. Wake ( $I_{WAKE} = 2 mA$ ,  $t_{WAKE} = 0.5 s$ ,  $V_{OREG} - V_{RCH} = 4.1V$ )

$$C_{MAX\_WAKE} = \frac{I_{WAKE} \times t_{WAKE}}{(V_{OREG} - V_{RCH}) - 0V}$$

$$C_{MAX\_WAKE} = \frac{2 mA \times 0.5s}{(4.2V - 0.1V) - 0V}$$

$$C_{MAX\_WAKE} = 244 \mu F$$

(11)

Based on these calculations the recommended maximum output capacitance to ensure proper operation of the battery detection scheme is 100  $\mu F$  which will allow for process and temperature variations.

Figure 9 shows the battery detection scheme when a battery is inserted. Channel 3 is the output signal and Channel 4 is the output current. The output signal switches between  $V_{OREG}$  and GND until a battery is inserted. Once the battery is detected, the output current increases from 0A to 1.3A, which is the programmed charge current for this application.

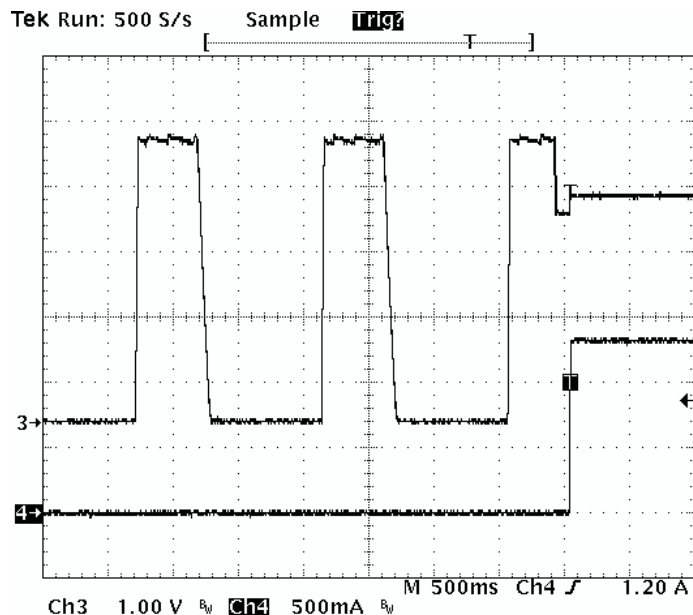


Figure 9. Battery Detection Waveform When a Battery is Inserted

Figure 10 shows the battery detection scheme when a battery is removed. Channel 3 is the output signal and Channel 4 is the output current. When the battery is removed, the output signal goes up due to the stored energy in the inductor and it crosses the  $V_{\text{OREG}} - V_{\text{RCH}}$  threshold. At this point the output current goes to 0A and the IC terminates the charge process and turns on the  $I_{\text{DISCHG2}}$  for  $t_{\text{DISCHG2}}$ . This causes the output voltage to fall down below the  $V_{\text{OREG}} - V_{\text{RCHG}}$  threshold triggering a *Battery Absent* condition and starting the battery detection scheme.

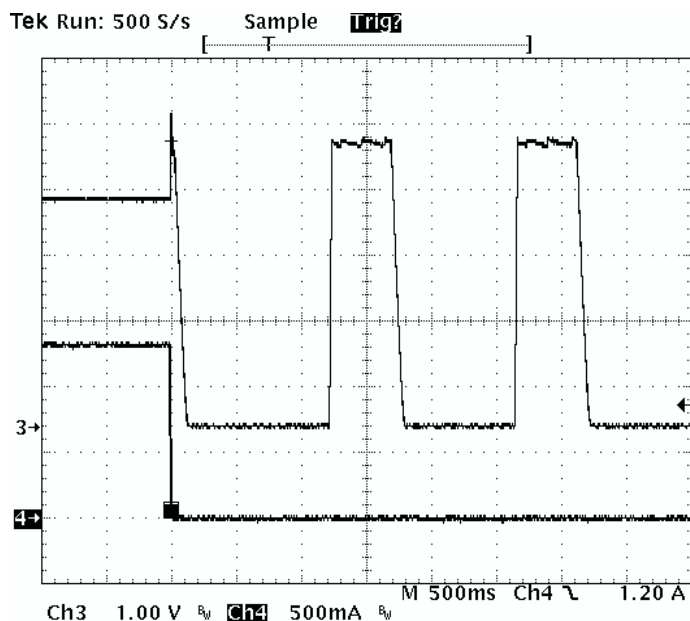


Figure 10. Battery Detection Waveform When a Battery is Removed

### Current Sense Amplifier

A current sense amplifier feature that translates the charge current into a DC voltage is offered. Figure 11 is a block diagram of this feature.

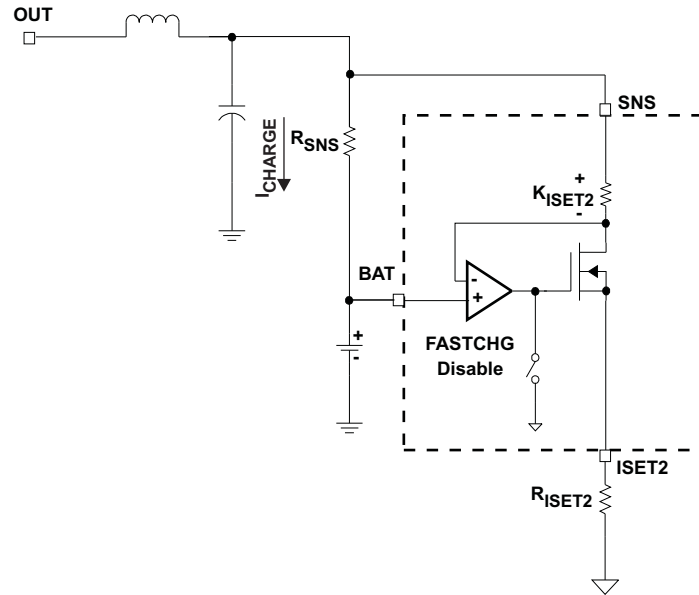


Figure 11. Current Sense Amplifier

The voltage on the ISET2 pin can be used to calculate the charge current. Equation 12 shows the relationship between the ISET2 voltage and the charge current:

$$I_{\text{CHARGE}} = \frac{V_{\text{ISET2}} \times K_{(\text{ISET2})}}{R_{\text{SNS}} \times R_{\text{ISET2}}} \tag{12}$$

This feature can be used to monitor the charge current (Figure 12) during the current regulation phase (Fastcharge only) and the voltage regulation phase. The schematic for the application circuit for this waveform is shown in Figure 14

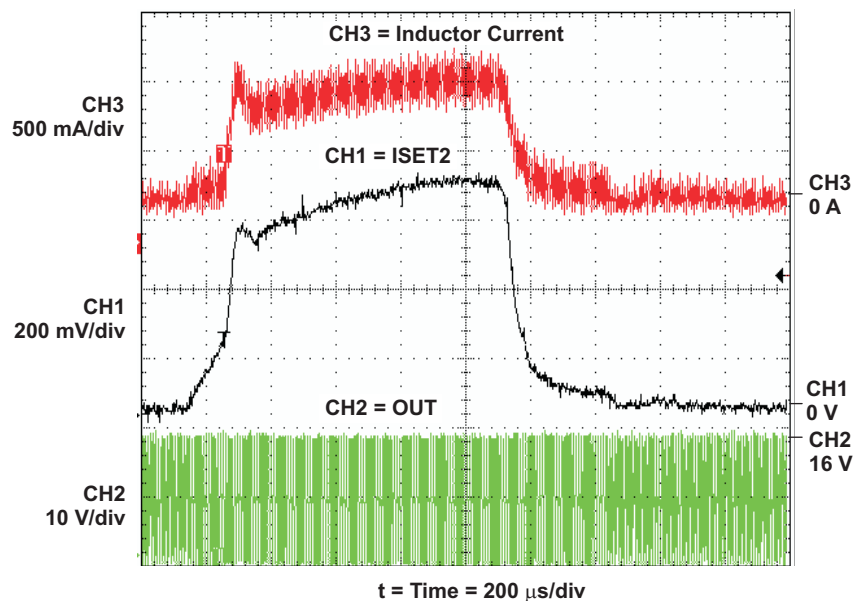


Figure 12. Current Sense Amplifier Charge Current Waveform

## bqSWITCHER SYSTEM DESIGN EXAMPLE

The following section provides a detailed system design example for the bq24100.

### System Design Specifications:

- $V_{IN} = 16V$
  - $V_{BAT} = 4.2V$  (1-Cell)
  - $I_{CHARGE} = 1.33 A$
  - $I_{PRECHARGE} = I_{TERM} = 133 mA$
  - Safety Timer = 5 hours
  - Inductor Ripple Current = 30% of Fast Charge Current
  - Initiate Charge Temperature = 0°C to 45°C
1. Determine the inductor value ( $L_{OUT}$ ) for the specified charge current ripple:

$$\Delta I_L = I_{CHARGE} \times I_{CHARGE}^{Ripple}$$

$$L_{OUT} = \frac{V_{BAT} \times (V_{INMAX} - V_{BAT})}{V_{INMAX} \times f \times \Delta I_L}$$

$$L_{OUT} = \frac{4.2 \times (16 - 4.2)}{16 \times (1.1 \times 10^6) \times (1.33 \times 0.3)}$$

$$L_{OUT} = 7.06 \mu H \tag{13}$$

Set the output inductor to standard 10  $\mu H$ . Calculate the total ripple current with using the 10  $\mu H$  inductor:

$$\Delta I_L = \frac{V_{BAT} \times (V_{INMAX} - V_{BAT})}{V_{INMAX} \times f \times L_{OUT}}$$

$$\Delta I_L = \frac{4.2 \times (16 - 4.2)}{16 \times (1.1 \times 10^6) \times (10 \times 10^{-6})}$$

$$\Delta I_L = 0.282 A \tag{14}$$

Calculate the maximum output current (peak current):

$$I_{LPK} = I_{OUT} + \frac{\Delta I_L}{2}$$

$$I_{LPK} = 1.33 + \frac{0.282}{2}$$

$$I_{LPK} = 1.471 A \tag{15}$$

Use standard 10  $\mu H$  inductor with a saturation current higher than 1.471A. (i.e., Sumida CDRH74-100)

2. Determine the output capacitor value ( $C_{OUT}$ ) using 16 kHz as the resonant frequency:

$$f_o = \frac{1}{2\pi\sqrt{L_{OUT} \times C_{OUT}}}$$

$$C_{OUT} = \frac{1}{4\pi^2 \times f_o^2 \times L_{OUT}}$$

$$C_{OUT} = \frac{1}{4\pi^2 \times (16 \times 10^3)^2 \times (10 \times 10^{-6})}$$

$$C_{OUT} = 9.89 \mu\text{F} \quad (16)$$

Use standard value 10  $\mu\text{F}$ , 25V, X5R,  $\pm 20\%$  ceramic capacitor (i.e., Panasonic 1206 ECJ-3YB1E106M)

3. Determine the sense resistor using the following equation:

$$R_{SNS} = \frac{V_{RSNS}}{I_{CHARGE}} \quad (17)$$

In order to get better current regulation accuracy ( $\pm 10\%$ ), let  $V_{RSNS}$  be between 100 mV and 200 mV. Use  $V_{RSNS} = 100$  mV and calculate the value for the sense resistor.

$$R_{SNS} = \frac{100 \text{ mV}}{1.33 \text{ A}}$$

$$R_{SNS} = 0.075 \Omega \quad (18)$$

This value is not standard in resistors. If this happens, then choose the next larger value which in this case is 0.1 $\Omega$ . Using the same equation (15) the actual  $V_{RSNS}$  will be 133mV. Calculate the power dissipation on the sense resistor:

$$P_{RSNS} = I_{CHARGE}^2 \times R_{SNS}$$

$$P_{RSNS} = 1.33^2 \times 0.1$$

$$P_{RSNS} = 176.9 \text{ mW} \quad (19)$$

Select standard value 100 m $\Omega$ , 0.25W 0805, 1206 or 2010 size, high precision sensing resistor. (i.e., Vishay CRCW1210-0R10F)

4. Determine ISET 1 resistor using the following equation:

$$R_{ISET1} = \frac{K_{ISET1} \times V_{ISET1}}{R_{SNS} \times I_{CHARGE}}$$

$$R_{ISET1} = \frac{1000 \times 1.0}{0.1 \times 1.33}$$

$$R_{ISET1} = 7.5 \text{ k}\Omega \quad (20)$$

Select standard value 7.5 k $\Omega$ , 1/16W  $\pm 1\%$  resistor (i.e., Vishay CRCWD0603-7501-F)

5. Determine ISET 2 resistor using the following equation:

$$R_{ISET2} = \frac{K_{ISET2} \times V_{ISET2}}{R_{SNS} \times I_{PRECHARGE}}$$

$$R_{ISET2} = \frac{1000 \times 0.1}{0.1 \times 0.133}$$

$$R_{ISET2} = 7.5 \text{ k}\Omega \quad (21)$$

Select standard value 7.5 k $\Omega$ , 1/16W  $\pm 1\%$  resistor (i.e., Vishay CRCWD0603-7501-F)

6. Determine TTC capacitor ( $C_{TTC}$ ) for the 5.0 hours safety timer using the following equation:

$$C_{TTC} = \frac{t_{CHARGE}}{K_{TTC}}$$

$$C_{TTC} = \frac{300 \text{ m}}{2.6 \text{ m/nF}}$$

$$C_{TTC} = 115.4 \text{ nF}$$

(22)

Select standard value 100 nF, 16V, X7R,  $\pm 10\%$  ceramic capacitor (i.e., Panasonic ECJ-1VB1C104K). Using this capacitor the actual safety timer will be 4.3 hours.

7. Determine TS resistor network for an operating temperature range from 0°C to 45°C.

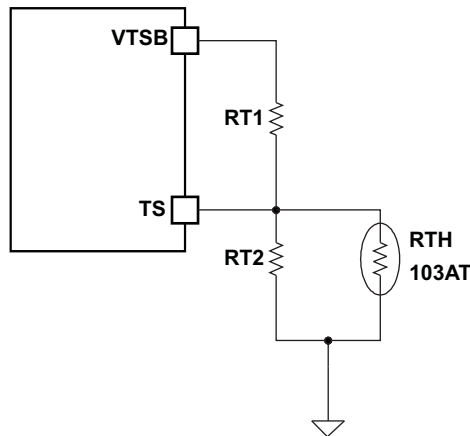


Figure 13. TS Resistor Network

Assuming a 103AT NTC Thermistor on the battery pack, determine the values for RT1 and RT2 using the following equations:

$$RT2 = \frac{V_{O(VTSB)} \times RTH_{COLD} \times RTH_{HOT} \times \left[ \frac{1}{V_{LTF}} - \frac{1}{V_{HTF}} \right]}{RTH_{HOT} \times \left( \frac{V_{O(VTSB)}}{V_{HTF}} - 1 \right) - RTH_{COLD} \times \left( \frac{V_{O(VTSB)}}{V_{LTF}} - 1 \right)}$$

$$RT1 = \frac{\frac{V_{O(VTSB)}}{V_{LTF}} - 1}{\frac{1}{RT2} + \frac{1}{RTH_{COLD}}}$$

Where:

$$V_{LTF} = V_{O(VTSB)} \times \%_{LTF+100} / 100$$

$$V_{HTF} = V_{O(VTSB)} \times \%_{HTF+100} / 100$$

(23)

$$RTH_{COLD} = 27.28 \text{ k}\Omega$$

$$RTH_{HOT} = 4.912 \text{ k}\Omega$$

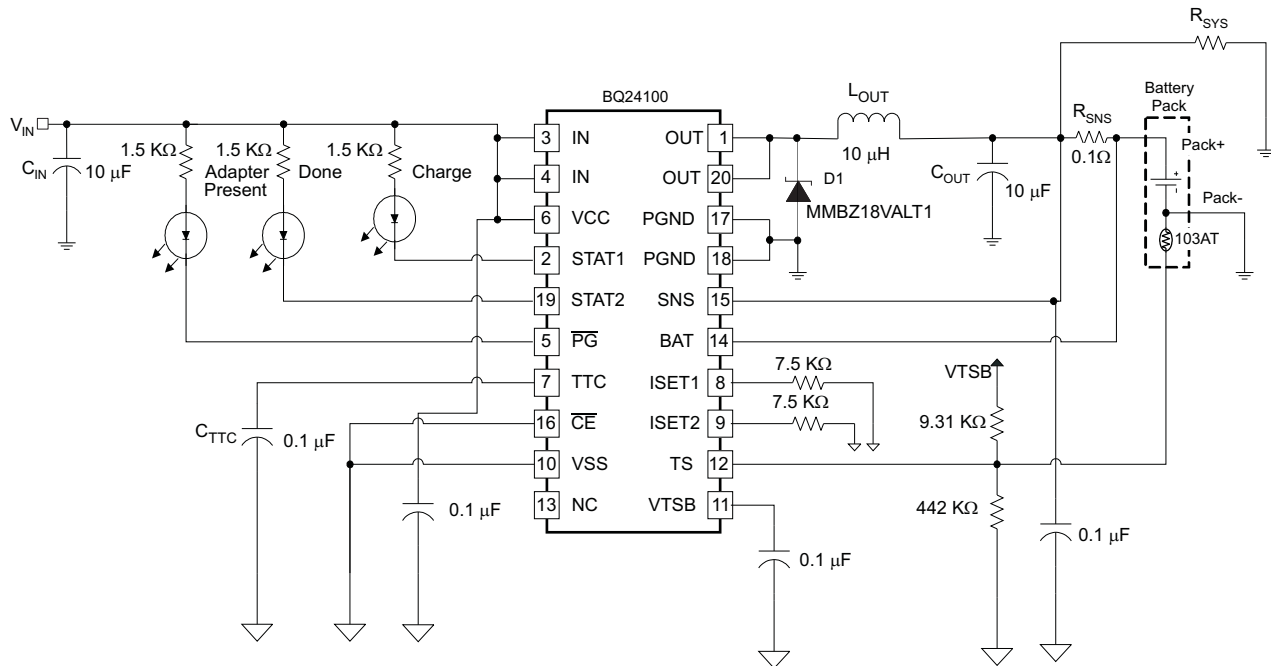
$$RT1 = 9.31 \text{ k}\Omega$$

$$RT2 = 442 \text{ k}\Omega$$

(24)

## APPLICATION INFORMATION

### Charging Battery and Powering System Without Affecting Battery Charge and Termination



**Figure 14. Application Circuit for Charging a Battery and Powering a System Without Affecting Termination**

The bqSWITCHER was designed as a stand-alone battery charger but can be easily adapted to power a system load, while considering a few minor issues.

#### Advantages:

1. The charger controller is based only on what current goes through the current-sense resistor (so precharge, constant current, and termination all work well), and is not affected by the system load.
2. The input voltage has been converted to a usable system voltage with good efficiency from the input.
3. Extra external FETs are not needed to switch power source to the battery.
4. The TTC pin can be grounded to disable termination and keep the converter running and the battery fully charged, or let the switcher terminate when the battery is full and then run off of the battery via the sense resistor.

#### Other Issues:

1. If the system load current is large ( $\geq 1$  A), the IR drop across the battery impedance causes the battery voltage to drop below the refresh threshold and start a new charge. The charger would then terminate due to low charge current. Therefore, the charger would cycle between charging and termination. If the load is smaller, the battery would have to discharge down to the refresh threshold resulting in a much slower cycling. Note that grounding the TTC pin keeps the converter on continuously.
2. If TTC is grounded, the battery is kept at 4.2 V (not much different than leaving a fully charged battery set unloaded).
3. Efficiency declines 2-3% hit when discharging through the sense resistor to the system.

## Using bq24105 to Charge LiFePO<sub>4</sub> Battery

The LiFePO<sub>4</sub> battery has many unique features such as a high thermal runaway temperature, discharge current capability, and charge current. These special features make it attractive in many applications such as power tools. The recommended charge voltage is 3.6 V and termination current is 50 mA. Figure 15 shows an application circuit for charging one cell LiFePO<sub>4</sub> using bq24105. The charge voltage is 3.6 V and recharge voltage is 3.516 V. The fast charging current is set to 1.33 A while the termination current is 50 mA. This circuit can be easily changed to support two or three cell applications. However, only 84 mV difference between regulation set point and rechargeable threshold makes it frequently enter into recharge mode when small load current is applied. This can be solved by lower down the recharge voltage threshold to 200 mV to discharge more energy from the battery before it enters recharge mode again. See the application report, *Using the bq24105/25 to Charge LiFePO<sub>4</sub> Battery (SLUA443)*, for additional details. The recharge threshold should be selected according to real application conditions.

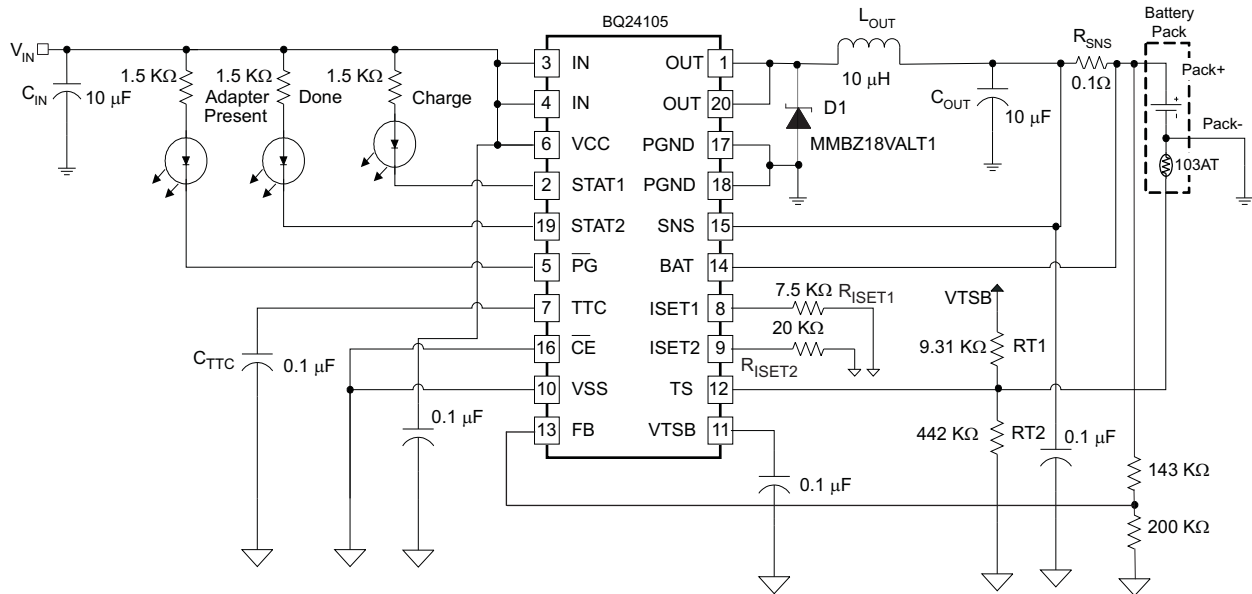


Figure 15. 1-Cell LiFePO<sub>4</sub> Application

## THERMAL CONSIDERATIONS

The SWITCHER is packaged in a thermally enhanced MLP package. The package includes a thermal pad to provide an effective thermal contact between the IC and the printed circuit board (PCB). Full PCB design guidelines for this package are provided in the application report entitled: *QFN/SON PCB Attachment (SLUA271)*.

The most common measure of package thermal performance is thermal impedance ( $\theta_{JA}$ ) measured (or modeled) from the chip junction to the air surrounding the package surface (ambient). The mathematical expression for  $\theta_{JA}$  is:

$$\theta_{(JA)} = \frac{T_J - T_A}{P} \quad (25)$$

Where:

$T_J$  = chip junction temperature

$T_A$  = ambient temperature

$P$  = device power dissipation

Factors that can greatly influence the measurement and calculation of  $\theta_{JA}$  include:

- Whether or not the device is board mounted
- Trace size, composition, thickness, and geometry
- Orientation of the device (horizontal or vertical)
- Volume of the ambient air surrounding the device under test and airflow
- Whether other surfaces are in close proximity to the device being tested

The device power dissipation,  $P$ , is a function of the charge rate and the voltage drop across the internal power FET. It can be calculated from the following equation:

$$P = [V_{in} \times I_{in} - V_{bat} \times I_{bat}]$$

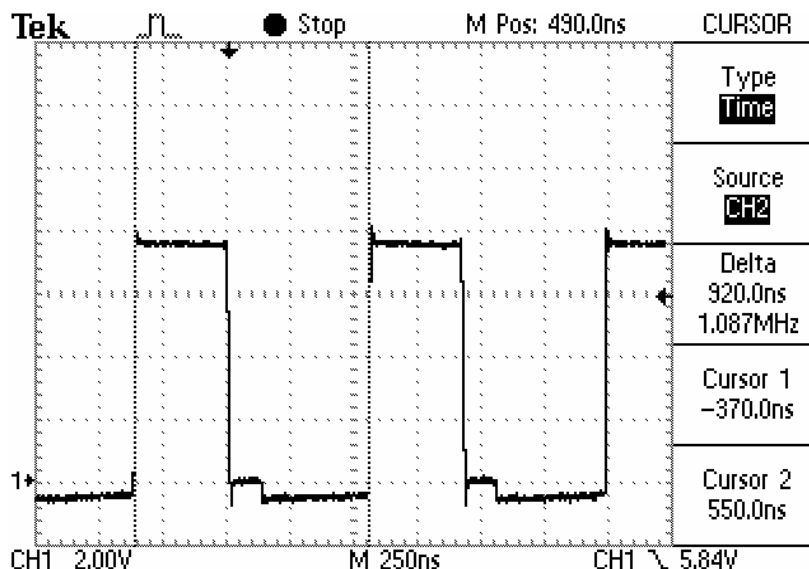
Due to the charge profile of Li-xx batteries, the maximum power dissipation is typically seen at the beginning of the charge cycle when the battery voltage is at its lowest. (See [Figure 5](#).)

## PCB LAYOUT CONSIDERATION

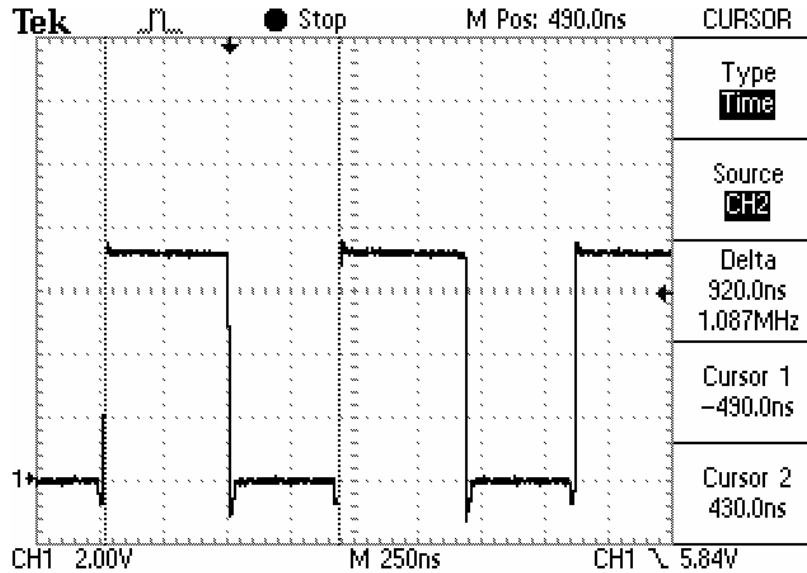
It is important to pay special attention to the PCB layout. The following provides some guidelines:

- To obtain optimal performance, the power input capacitors, connected from input to PGND, should be placed as close as possible to the bqSWITCHER. The output inductor should be placed directly above the IC and the output capacitor connected between the inductor and PGND of the IC. The intent is to minimize the current path loop area from the OUT pin through the LC filter and back to the GND pin. The sense resistor should be adjacent to the junction of the inductor and output capacitor. Route the sense leads connected across the  $R_{(SNS)}$  back to the IC, close to each other (minimize loop area) or on top of each other on adjacent layers (do not route the sense leads through a high-current path). Use an optional capacitor downstream from the sense resistor if long (inductive) battery leads are used.
- Place all small-signal components ( $C_{TTC}$ , RSET1/2 and TS) close to their respective IC pin (do not place components such that routing interrupts power stage currents). All small *control* signals should be routed away from the high current paths.
- The PCB should have a ground plane (return) connected directly to the return of all components through vias (three vias per capacitor for power-stage capacitors, three vias for the IC PGND, one via per capacitor for small-signal components). A *star* ground design approach is typically used to keep circuit block currents isolated (high-power/low-power small-signal) which reduces noise-coupling and ground-bounce issues. A single ground plane for this design gives good results. With this small layout and a single ground plane, there is not a ground-bounce issue, and having the components segregated minimizes coupling between signals.
- The high-current charge paths into IN and from the OUT pins must be sized appropriately for the maximum charge current in order to avoid voltage drops in these traces. The PGND pins should be connected to the ground plane to return current through the internal low-side FET. The *thermal* vias in the IC PowerPAD™ provide the return-path connection.
- The bqSWITCHER is packaged in a thermally enhanced MLP package. The package includes a thermal pad to provide an effective thermal contact between the IC and the PCB. Full PCB design guidelines for this package are provided in the application report entitled: *QFN/SON PCB Attachment (SLUA271)*. Six 10-mil to 13-mil vias are a minimum number of recommended vias, placed in the IC's power pad, connecting it to a ground *thermal* plane on the opposite side of the PWB. This plane must be at the same potential as  $V_{SS}$  and PGND of this IC.
- See user guide [SLUU200](#) for an example of good layout.

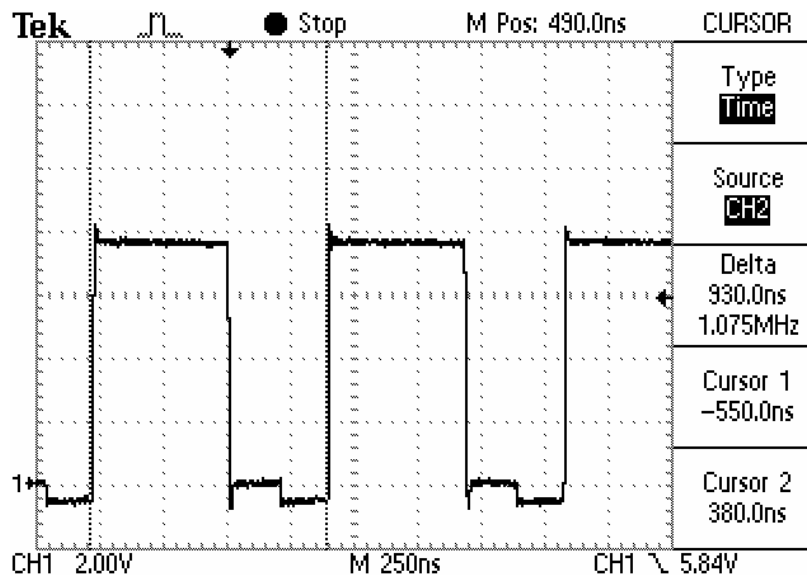
WAVEFORMS: All waveforms are taken at Lout (IC Out pin).  $V_{IN} = 7.6\text{ V}$  and the battery was set to 2.6 V, 3.5 V, and 4.2 V for the three waveforms. When the top switch of the converter is *on*, the waveform is at ~7.5 V, and when *off*, the waveform is near ground. Note that the ringing on the switching edges is small. This is due to a *tight* layout (minimized loop areas), a shielded inductor (closed core), and using a low-inductive scope ground lead (i.e., short with minimum loop).



Precharge: The current is low in precharge; so, the bottom synchronous FET turns off after its minimum on-time which explains the step between  $\neq 0$  V and -0.5 V. When the bottom FET and top FET are off, the current conducts through the body diode of the bottom FET which results in a diode drop below the ground potential. The initial negative spike is the delay turning on the bottom FET, which is to prevent shoot-through current as the top FET is turning off.



Fast Charge: This is captured during the constant-current phase. The two negative spikes are the result of the short delay when switching between the top and bottom FETs. The break-before-make action prevents current shoot-through and results in a body diode drop below ground potential during the *break* time.



Charge during Voltage Regulation and Approaching Termination: Note that this waveform is similar to the precharge waveform. The difference is that the battery voltage is higher so the duty cycle is slightly higher. The bottom FET stays on longer because there is more of a current load than during precharge; it takes longer for the inductor current to ramp down to the current threshold where the synchronous FET is disabled.

---

**REVISION HISTORY**

| <b>Changes from Original (August, 2009) to Revision A</b>                           | <b>Page</b>        |
|---|--------------------|
| • Updated $V_{\text{OREG}}$ formula to match the BQ24105 commercial datasheet. .... | <a href="#">13</a> |

---

**PACKAGING INFORMATION**

| Orderable Device | Status<br>(1) | Package Type | Package Drawing | Pins | Package Qty | Eco Plan<br>(2)         | Lead/Ball Finish | MSL Peak Temp<br>(3) | Op Temp (°C) | Device Marking<br>(4/5) | Samples |
|------------------|---------------|--------------|-----------------|------|-------------|-------------------------|------------------|----------------------|--------------|-------------------------|---------|
| BQ24105IRHLRQ1   | ACTIVE        | VQFN         | RHL             | 20   | 3000        | Green (RoHS & no Sb/Br) | CU NIPDAU        | Level-3-260C-168 HR  | -40 to 85    | BQ24105                 | Samples |

(1) The marketing status values are defined as follows:

**ACTIVE:** Product device recommended for new designs.

**LIFEBUY:** TI has announced that the device will be discontinued, and a lifetime-buy period is in effect.

**NRND:** Not recommended for new designs. Device is in production to support existing customers, but TI does not recommend using this part in a new design.

**PREVIEW:** Device has been announced but is not in production. Samples may or may not be available.

**OBSELETE:** TI has discontinued the production of the device.

(2) Eco Plan - The planned eco-friendly classification: Pb-Free (RoHS), Pb-Free (RoHS Exempt), or Green (RoHS & no Sb/Br) - please check <http://www.ti.com/productcontent> for the latest availability information and additional product content details.

**TBD:** The Pb-Free/Green conversion plan has not been defined.

**Pb-Free (RoHS):** TI's terms "Lead-Free" or "Pb-Free" mean semiconductor products that are compatible with the current RoHS requirements for all 6 substances, including the requirement that lead not exceed 0.1% by weight in homogeneous materials. Where designed to be soldered at high temperatures, TI Pb-Free products are suitable for use in specified lead-free processes.

**Pb-Free (RoHS Exempt):** This component has a RoHS exemption for either 1) lead-based flip-chip solder bumps used between the die and package, or 2) lead-based die adhesive used between the die and leadframe. The component is otherwise considered Pb-Free (RoHS compatible) as defined above.

**Green (RoHS & no Sb/Br):** TI defines "Green" to mean Pb-Free (RoHS compatible), and free of Bromine (Br) and Antimony (Sb) based flame retardants (Br or Sb do not exceed 0.1% by weight in homogeneous material)

(3) MSL, Peak Temp. -- The Moisture Sensitivity Level rating according to the JEDEC industry standard classifications, and peak solder temperature.

(4) There may be additional marking, which relates to the logo, the lot trace code information, or the environmental category on the device.

(5) Multiple Device Markings will be inside parentheses. Only one Device Marking contained in parentheses and separated by a "-" will appear on a device. If a line is indented then it is a continuation of the previous line and the two combined represent the entire Device Marking for that device.

**Important Information and Disclaimer:**The information provided on this page represents TI's knowledge and belief as of the date that it is provided. TI bases its knowledge and belief on information provided by third parties, and makes no representation or warranty as to the accuracy of such information. Efforts are underway to better integrate information from third parties. TI has taken and continues to take reasonable steps to provide representative and accurate information but may not have conducted destructive testing or chemical analysis on incoming materials and chemicals. TI and TI suppliers consider certain information to be proprietary, and thus CAS numbers and other limited information may not be available for release.

In no event shall TI's liability arising out of such information exceed the total purchase price of the TI part(s) at issue in this document sold by TI to Customer on an annual basis.

**OTHER QUALIFIED VERSIONS OF BQ24105-Q1 :**

- Catalog: [BQ24105](#)

NOTE: Qualified Version Definitions:

- Catalog - TI's standard catalog product

**TAPE AND REEL INFORMATION**

**QUADRANT ASSIGNMENTS FOR PIN 1 ORIENTATION IN TAPE**


\*All dimensions are nominal

| Device         | Package Type | Package Drawing | Pins | SPQ  | Reel Diameter (mm) | Reel Width W1 (mm) | A0 (mm) | B0 (mm) | K0 (mm) | P1 (mm) | W (mm) | Pin1 Quadrant |
|----------------|--------------|-----------------|------|------|--------------------|--------------------|---------|---------|---------|---------|--------|---------------|
| BQ24105IRHLRQ1 | VQFN         | RHL             | 20   | 3000 | 330.0              | 12.4               | 3.8     | 4.8     | 1.6     | 8.0     | 12.0   | Q1            |

TAPE AND REEL BOX DIMENSIONS



\*All dimensions are nominal

| Device         | Package Type | Package Drawing | Pins | SPQ  | Length (mm) | Width (mm) | Height (mm) |
|----------------|--------------|-----------------|------|------|-------------|------------|-------------|
| BQ24105IRHLRQ1 | VQFN         | RHL             | 20   | 3000 | 367.0       | 367.0      | 35.0        |

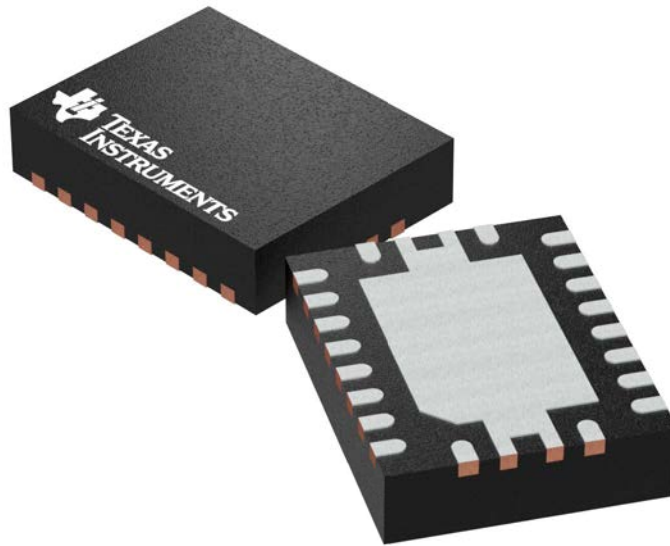
## GENERIC PACKAGE VIEW

**RHL 20**

**VQFN - 1 mm max height**

**3.5 x 4.5 mm, 0.5 mm pitch**

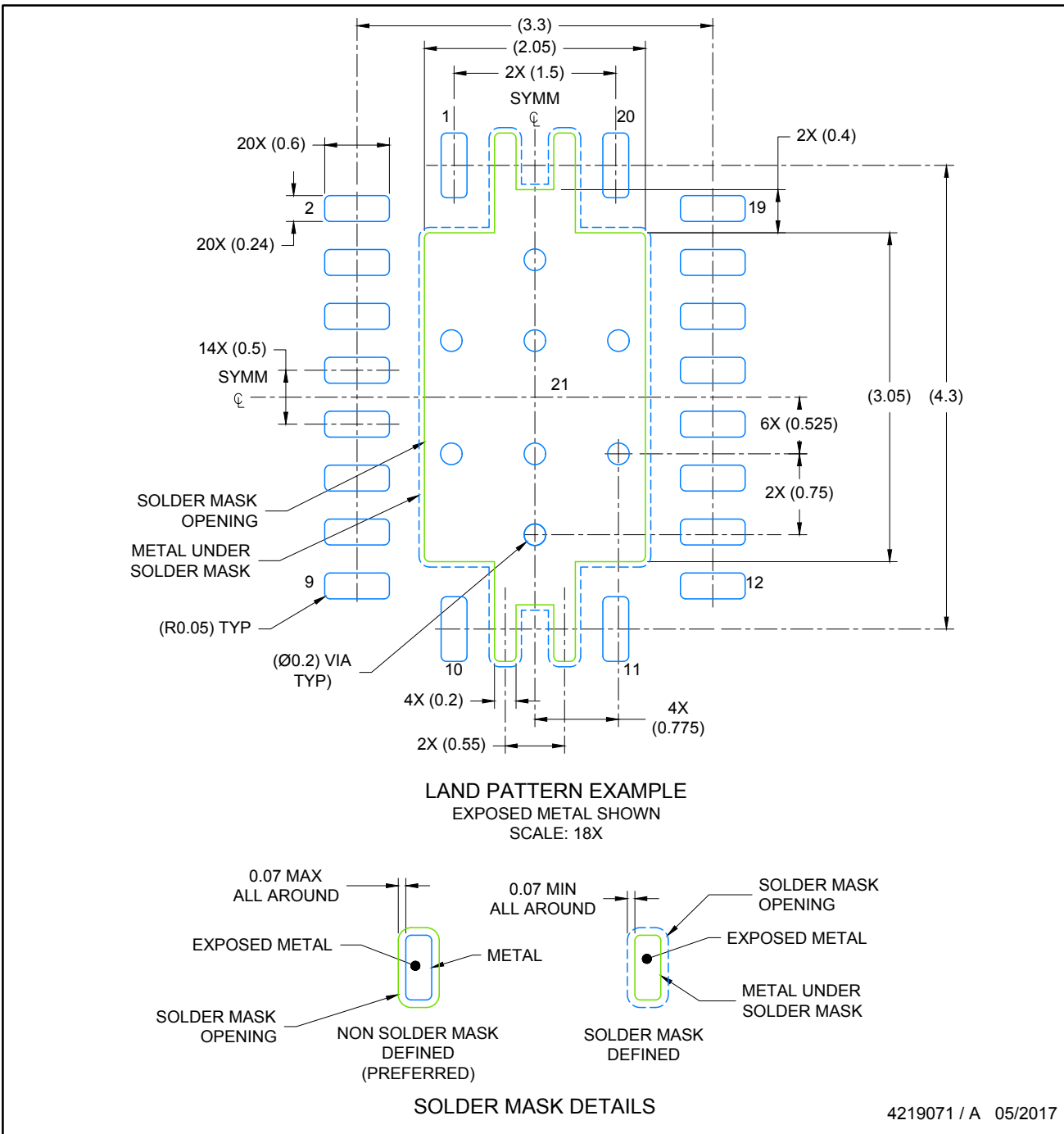
PLASTIC QUAD FLATPACK - NO LEAD



Images above are just a representation of the package family, actual package may vary.  
Refer to the product data sheet for package details.

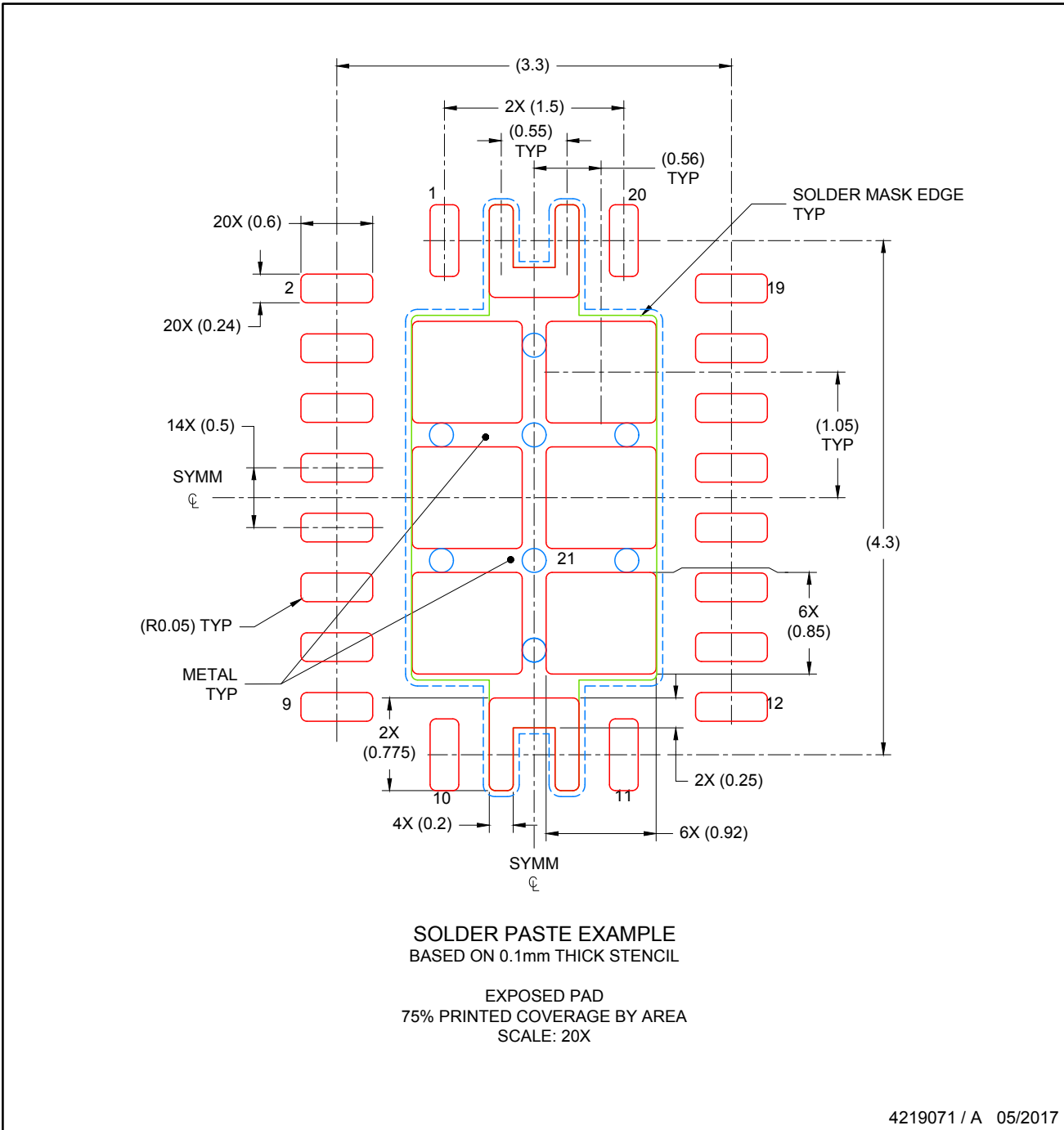
4205346/L





NOTES: (continued)

4. This package is designed to be soldered to a thermal pad on the board. For more information, see Texas Instruments literature number SLUA271 ([www.ti.com/lit/sluea271](http://www.ti.com/lit/sluea271)).
5. Solder mask tolerances between and around signal pads can vary based on board fabrication site.
6. Vias are optional depending on application, refer to device data sheet. If any vias are implemented, refer to their locations shown on this view. It is recommended that vias under paste be filled, plugged or tented.



NOTES: (continued)

7. Laser cutting apertures with trapezoidal walls and rounded corners may offer better paste release. IPC-7525 may have alternate design recommendations..

## IMPORTANT NOTICE

Texas Instruments Incorporated (TI) reserves the right to make corrections, enhancements, improvements and other changes to its semiconductor products and services per JESD46, latest issue, and to discontinue any product or service per JESD48, latest issue. Buyers should obtain the latest relevant information before placing orders and should verify that such information is current and complete.

TI's published terms of sale for semiconductor products (<http://www.ti.com/sc/docs/stdterms.htm>) apply to the sale of packaged integrated circuit products that TI has qualified and released to market. Additional terms may apply to the use or sale of other types of TI products and services.

Reproduction of significant portions of TI information in TI data sheets is permissible only if reproduction is without alteration and is accompanied by all associated warranties, conditions, limitations, and notices. TI is not responsible or liable for such reproduced documentation. Information of third parties may be subject to additional restrictions. Resale of TI products or services with statements different from or beyond the parameters stated by TI for that product or service voids all express and any implied warranties for the associated TI product or service and is an unfair and deceptive business practice. TI is not responsible or liable for any such statements.

Buyers and others who are developing systems that incorporate TI products (collectively, "Designers") understand and agree that Designers remain responsible for using their independent analysis, evaluation and judgment in designing their applications and that Designers have full and exclusive responsibility to assure the safety of Designers' applications and compliance of their applications (and of all TI products used in or for Designers' applications) with all applicable regulations, laws and other applicable requirements. Designer represents that, with respect to their applications, Designer has all the necessary expertise to create and implement safeguards that (1) anticipate dangerous consequences of failures, (2) monitor failures and their consequences, and (3) lessen the likelihood of failures that might cause harm and take appropriate actions. Designer agrees that prior to using or distributing any applications that include TI products, Designer will thoroughly test such applications and the functionality of such TI products as used in such applications.

TI's provision of technical, application or other design advice, quality characterization, reliability data or other services or information, including, but not limited to, reference designs and materials relating to evaluation modules, (collectively, "TI Resources") are intended to assist designers who are developing applications that incorporate TI products; by downloading, accessing or using TI Resources in any way, Designer (individually or, if Designer is acting on behalf of a company, Designer's company) agrees to use any particular TI Resource solely for this purpose and subject to the terms of this Notice.

TI's provision of TI Resources does not expand or otherwise alter TI's applicable published warranties or warranty disclaimers for TI products, and no additional obligations or liabilities arise from TI providing such TI Resources. TI reserves the right to make corrections, enhancements, improvements and other changes to its TI Resources. TI has not conducted any testing other than that specifically described in the published documentation for a particular TI Resource.

Designer is authorized to use, copy and modify any individual TI Resource only in connection with the development of applications that include the TI product(s) identified in such TI Resource. NO OTHER LICENSE, EXPRESS OR IMPLIED, BY ESTOPPEL OR OTHERWISE TO ANY OTHER TI INTELLECTUAL PROPERTY RIGHT, AND NO LICENSE TO ANY TECHNOLOGY OR INTELLECTUAL PROPERTY RIGHT OF TI OR ANY THIRD PARTY IS GRANTED HEREIN, including but not limited to any patent right, copyright, mask work right, or other intellectual property right relating to any combination, machine, or process in which TI products or services are used. Information regarding or referencing third-party products or services does not constitute a license to use such products or services, or a warranty or endorsement thereof. Use of TI Resources may require a license from a third party under the patents or other intellectual property of the third party, or a license from TI under the patents or other intellectual property of TI.

TI RESOURCES ARE PROVIDED "AS IS" AND WITH ALL FAULTS. TI DISCLAIMS ALL OTHER WARRANTIES OR REPRESENTATIONS, EXPRESS OR IMPLIED, REGARDING RESOURCES OR USE THEREOF, INCLUDING BUT NOT LIMITED TO ACCURACY OR COMPLETENESS, TITLE, ANY EPIDEMIC FAILURE WARRANTY AND ANY IMPLIED WARRANTIES OF MERCHANTABILITY, FITNESS FOR A PARTICULAR PURPOSE, AND NON-INFRINGEMENT OF ANY THIRD PARTY INTELLECTUAL PROPERTY RIGHTS. TI SHALL NOT BE LIABLE FOR AND SHALL NOT DEFEND OR INDEMNIFY DESIGNER AGAINST ANY CLAIM, INCLUDING BUT NOT LIMITED TO ANY INFRINGEMENT CLAIM THAT RELATES TO OR IS BASED ON ANY COMBINATION OF PRODUCTS EVEN IF DESCRIBED IN TI RESOURCES OR OTHERWISE. IN NO EVENT SHALL TI BE LIABLE FOR ANY ACTUAL, DIRECT, SPECIAL, COLLATERAL, INDIRECT, PUNITIVE, INCIDENTAL, CONSEQUENTIAL OR EXEMPLARY DAMAGES IN CONNECTION WITH OR ARISING OUT OF TI RESOURCES OR USE THEREOF, AND REGARDLESS OF WHETHER TI HAS BEEN ADVISED OF THE POSSIBILITY OF SUCH DAMAGES.

Unless TI has explicitly designated an individual product as meeting the requirements of a particular industry standard (e.g., ISO/TS 16949 and ISO 26262), TI is not responsible for any failure to meet such industry standard requirements.

Where TI specifically promotes products as facilitating functional safety or as compliant with industry functional safety standards, such products are intended to help enable customers to design and create their own applications that meet applicable functional safety standards and requirements. Using products in an application does not by itself establish any safety features in the application. Designers must ensure compliance with safety-related requirements and standards applicable to their applications. Designer may not use any TI products in life-critical medical equipment unless authorized officers of the parties have executed a special contract specifically governing such use. Life-critical medical equipment is medical equipment where failure of such equipment would cause serious bodily injury or death (e.g., life support, pacemakers, defibrillators, heart pumps, neurostimulators, and implantables). Such equipment includes, without limitation, all medical devices identified by the U.S. Food and Drug Administration as Class III devices and equivalent classifications outside the U.S.

TI may expressly designate certain products as completing a particular qualification (e.g., Q100, Military Grade, or Enhanced Product). Designers agree that it has the necessary expertise to select the product with the appropriate qualification designation for their applications and that proper product selection is at Designers' own risk. Designers are solely responsible for compliance with all legal and regulatory requirements in connection with such selection.

Designer will fully indemnify TI and its representatives against any damages, costs, losses, and/or liabilities arising out of Designer's non-compliance with the terms and provisions of this Notice.

## Looking for pricing, stock, or lifecycle information?

Click below to explore more details on WIN SOURCE:

 [View BQ24105IRHLRQ1](#) on WIN SOURCE

 [Texas Instruments](#) Information

## Optimize Your Supply Chain with WIN SOURCE Solutions

-  Global Sourcing Solution
-  Obsolete Management
-  Cost Control Management
-  Shortage Management
-  Alternative Solution
-  Excess Inventory Management