






THE DATASHEET OF SM12



SPECIFICATION SHEET

SPECIFICATION SHEET NO.	N0310- SOT23SM120SM12
DATE	Mar. 10, 2021
REVISION	A0
DESCRIPTION	<p>SMD Plastic-Encapsulate ESD Protection Diodes, SOT-23 series, 3 pads SM12 Type, Uni-directional TVS Diodes Array Reverse Working Voltage : 12V, Peak Pulse Power per (8/20μs): 350 Watts Operating Temp. Range -55°C ~+150°C, Package in Tape/Reel, 3000pcs/Reel RoHS/RoHS III compliant</p>
CUSTOMER	
CUSTOMER PART NUMBER	
CROSS REF. PART NUMBER	
ORIGINAL PART NUMBER	MDD SM12
PART CODE	SOT23SM120SM12

VENDOR APPROVE			
Issued/Checked/Approved			
DATE: March 10, 2021			

CUSTOMER APPROVE	
DATE:	

SMD ESD PROTECTION DIODES (TUBE) SOT23 SERIES

MAIN FEATURE

- 350 Watts Peak Pulse Power per (8/20μs)
- IEC61000-4-2 (ESD) ±15kV (air), ±8kV (contact)
- IEC61000-4-4 (EFT) 40A (5/50ns)
- Protects one bidirectional line or two unidirectional lines
- Low clamping voltage
- Low leakage current
- Working voltages : 3V, 5V, 8V, 12V, 15V, 18V, 20V, 24V, 36V
- Meets MSL 1 Requirements



APPLICATION

- Cell Phone Handsets and Accessories
- Microprocessor based equipment
- Personal Digital Assistants (PDA's)
- Notebooks, Desktops, and Servers
- Portable Instrumentation
- Networking and Telecom
- Serial and Parallel Ports
- Peripherals

RFQ

[Request For Quotation](#)

PART CODE GUIDE

SOT23	SM120	S	M12
1	2	3	4

1) **SOT23**: SMD Plastic-Encapsulate ESD Protection Diodes, SOT-23 series, 3 pads

2) **SM120**: Type code for SM12

3) **S**: Package code, Package in Tape/Reel, 3000pcs/Reel

4) **M12**: Marking code for "M12" on the case surface, Different Marking for different specification.

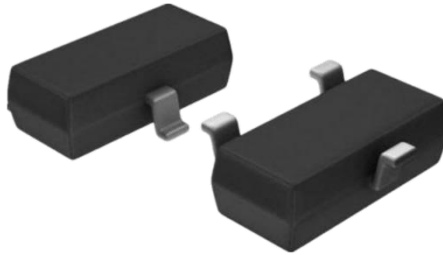
MORE ITEMS AVAILABLE (Uni-directional)

SOT23SM030SM03	SOT23SM050SM05	SOT23SM080SM08	SOT23SM120SM12	SOT23SM150SM15
SOT23SM180SM18	SOT23SM200SM20	SOT23SM240SM24	SOT23SM300SM30	

SMD ESD PROTECTION DIODES (TUBE) SOT23 SERIES

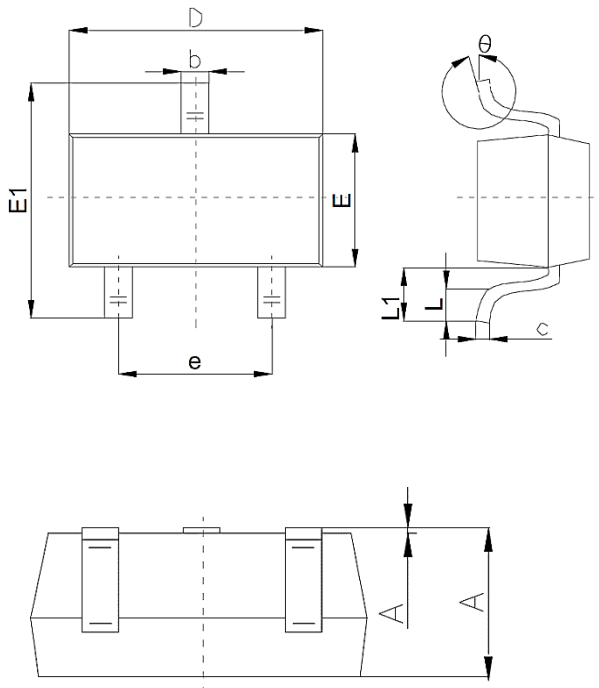
DIMENSION (Unit: Inch/mm)

Image for reference



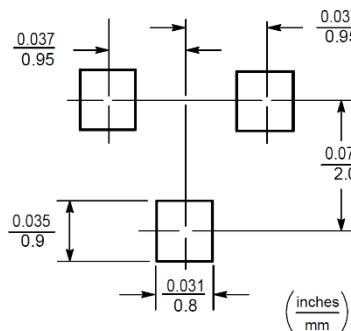
Marking: M12

SOT-23

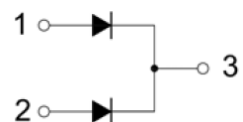


Symbol	Value (mm)		
	Min.	Typ.	Max.
A	1.0		1.4
A1			0.10
b	0.35		0.50
c	0.10		0.20
D	2.70	2.90	3.10
E	1.40		1.60
E1	2.40		2.80
e		1.9	
L	0.10		0.30
L1	0.40		
θ	0°		10°

Recommend Pad Layout



Circuit Diagram



- 1.Base
- 2.Emitter
- 3.Collector

SMD ESD PROTECTION DIODES (TUBE) SOT23 SERIES
MECHANICAL DATA

Case	Terminals	Polarity	Mounting Position	Weight per piece
JEDEC SOT-23 molded plastic body	Matte tin plated	Polarity symbol marking on case	Any	0.00019 Ounce, 0.00591 grams

ABSOLUTE MAX. RATINGS AT Ta=25 °C (unless otherwise specified)

Parameter	SYMBOLS	VALUE	UNITS
		LIMIT	
ESD per IEC 61000-4-3 (Air)	V ESD	+/-15	KV
ESD per IEC 61000-4-2 (Contact)	V ESD	+/-8	KV
Peak Pulse Power(tp=8/20us waveform)	P PP	350	W
Lead Solder Temperature – Maximum (10 Second Duration)	T L	260	°C
Operating Temperature Range	TOPT	-55 ~+ 150	°C
Storage Temperature Range	T STG	-55 ~ +150	°C

ABSOLUTE MAX. RATINGS AT Ta=25 °C (unless otherwise specified)

Parameter	SYMBOLS	VALUE			UNITS
		Min.	Typical	Max.	
Reverse Working Voltage	V RWM			12.0	V
Reverse Breakdown Voltage @ IT = 1.0mA	V BR	13.3			V
Test Circuit	I T		1.0		μA
Clamping Voltage @ I PP = 1A	V C			24	V
Clamping Voltage @ I PP = 10A	V C			38	V
Reverse Leakage Current	I R			1.0	μA
Junction Capacitance	C T			120	pF

SMD ESD PROTECTION DIODES (TUBE) SOT23 SERIES
ELECTRICAL CHARACTERISTICS AT Ta= 25 °C

Parameter	SYMBOLS	VALUE			UNIT	Condition
		Min.	Typ.	Max.		
Collector-base breakdown voltage	$V_{(BR)CBO}$	75			V	$I_C = 10\mu A, I_E = 0$
Collector-emitter breakdown voltage	$V_{(BR)CEO}^*$	40			V	$I_C = 10mA, I_B = 0$
Emitter-base breakdown voltage	$V_{(BR)EBO}$	6			V	$I_E = 10\mu A, I_C = 0$
Collector cut-off current	I_{CBO}			0.01	μA	$V_{CB} = 60V, I_E = 0$
Collector cut-off current	I_{CEX}			0.01	μA	$V_{CE} = 30V, V_{BE(off)} = 3V$
Emitter cut-off current	I_{EBO}			0.1	μA	$V_{EB} = 3V, I_C = 0$
DC Current gain	$h_{FE(1)}^*$	100		300		$V_{CE} = 10V, I_C = 150mA$
	$h_{FE(2)}$	40				$V_{CE} = 10V, I_C = 0.1mA$
	$h_{FE(3)}^*$	42				$V_{CE} = 10V, I_C = 500mA$
Collector-emitter saturation voltage	$V_{CE(sat)}^*$			1	V	$I_C = 500mA, I_B = 50mA$ $I_C = 150mA, I_B = 15mA$
				0.3		
Base-emitter saturation voltage	$V_{BE(sat)}^*$			2.0	V	$I_C = 500mA, I_B = 50mA$ $I_C = 150mA, I_B = 15mA$
				1.2		
Transition frequency	f_T	300			MHz	$V_{CE} = 20V, I_C = 20mA, f = 100MHz$
Delay time	t_d			10	ns	$V_{CC} = 30V, V_{BE(off)} = -0.5V$ $I_C = 150mA, I_{B1} = 15mA$
Rise time	t_r			25	ns	
Storage time	t_s			225	ns	$V_{CC} = 30V, I_C = 150mA$ $I_{B1} = -I_{B2} = 15mA$
Fall time	t_f			60	ns	

Note: * pulse test: Pulse Width $\leq 300\mu s$, Duty Cycles $\leq 2.0\%$.

CLASSIFICATION OF h_{FE}

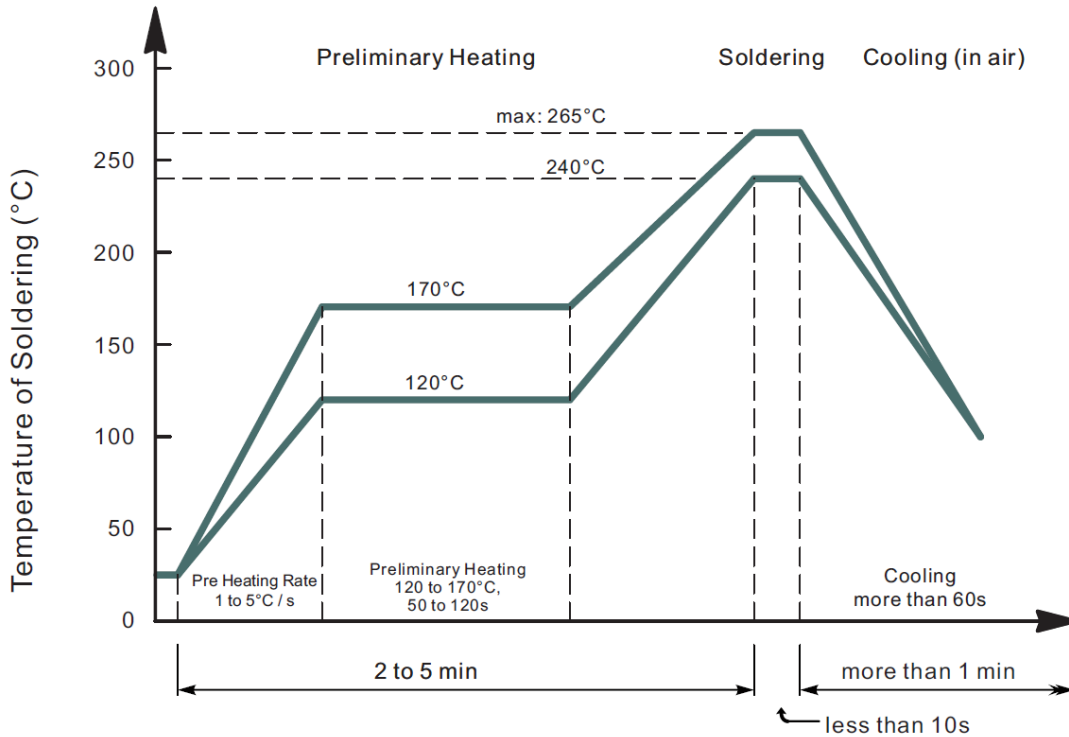
Rank	L	H
Range	100 ~ 200	200 ~ 300
Marking	1P	1P

SMD ESD PROTECTION DIODES (TUBE) SOT23 SERIES
RELIABILITY

Number	Experiment Items	Experiment Method And Conditions	Reference Documents
1	Solder Resistance Test	Test 260°C± 5°C for 10 ± 2 sec. Immerse body into solder 1/16" ± 1/32"	MIL-STD-750D METHOD-2031.2
2	Solderability Test	230°C ±5°C for 5 sec.	MIL-STD-750D METHOD-2026.1 0
3	Pull Test	1 kg in axial lead direction for 10 sec.	MIL-STD-750D METHOD-2036.4
4	Bend Test	0.5Kg Weight Applied To Each Lead, Bending Arcs 90 °C ± 5 °C For 3 Times	MIL-STD-750D METHOD-2036.4
5	High Temperature Reverse Bias Test	TA=100°C for 1000 Hours at VR=80% Rated VR	MIL-STD-750D METHOD-1038.4
6	Forward Operation Life Test	TA=25°C Rated Average Rectified Current	MIL-STD-750D METHOD-1027.3
7	Intermittent Operation Life Test	On state: 5 min with rated IRMS Power Off state: 5 min with Cool Forced Air. On and off for 1000 cycles.	MIL-STD-750D METHOD-1036.3
8	Pressure Cooker Test	15 PSIG, TA=121°C, 4 hours	MIL-S-19500 APPENOIXC
9	Temperature Cycling Test	-55°C~+125°C; 30 Minutes For Dwelled Time 5 minutes for transferred time. Total: 10 cycles.	MIL-STD-750D METHOD-1051.7
10	Thermal Shock Test	0°C for 5 minutes., 100°C for 5minutes, Total: 10 cycles	MIL-STD-750D METHOD-1056.7
11	Forward Surge Test	8.3ms Single Sale Sine-wave One Surge.	MIL-STD-750D METHOD-4066.4
12	Humidity Test	TA=65°C, RH=98% for 1000 hours.	MIL-STD-750D METHOD-1021.3
13	High Temperature Storage life Test	150°C for 1000 Hours	MIL-STD-750D METHOD-1031.5

SMD ESD PROTECTION DIODES (TUBE) SOT23 SERIES

SUGGESTED REFLOW PROFILE (For Reference Only)

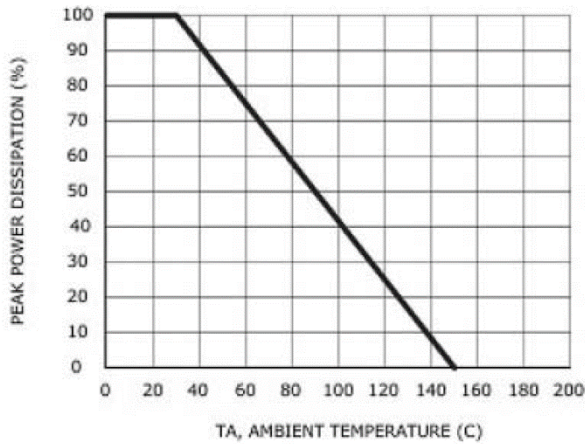


- Recommended peak temperature is over 245°C, If peak temperature is below 245 °C, you may adjust the following parameters; time length of peak temperature (longer), time length of soldering (longer), thickness of solder paste (thicker)
- Welding shall not exceed 2 times
- Remark: lead free solder paste (96.5 sn/3.0 Ag/0.5Cu)

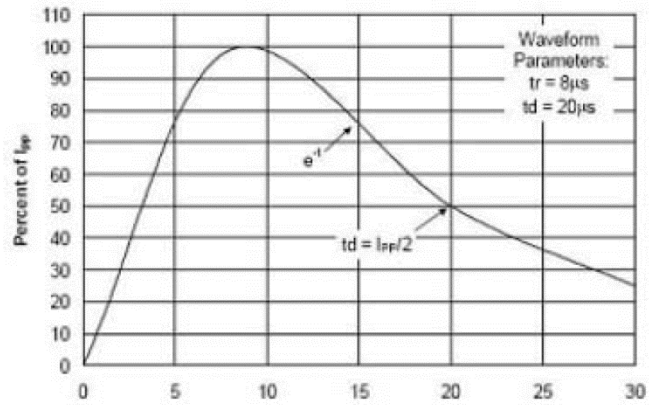
SMD ESD PROTECTION DIODES (TUBE) SOT23 SERIES

RATINGS AND CHARACTERISTIC CURVES (For Reference Only)

Power Derating Curve



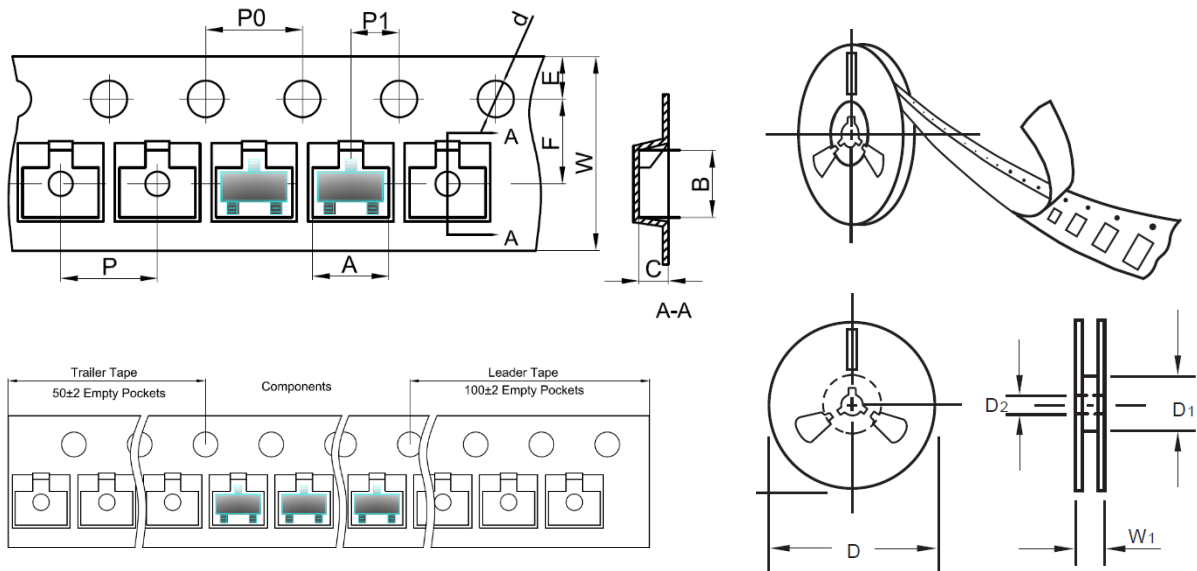
Pulse Waveform



SMD ESD PROTECTION DIODES (TUBE) SOT23 SERIES

TAPE/REEL (Unit: mm)

All Devices are packed in accordance with EIA standard RS-481-A and specifications.

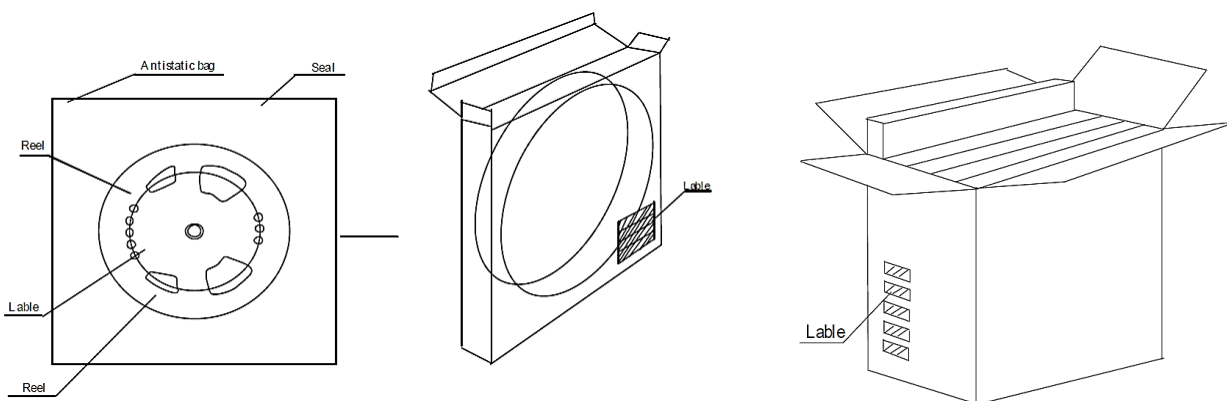


Item	Symbol	Tolerance	SOT-23
Carrier width	A	0.1	3.15
Carrier Length	B	0.1	2.77
Carrier Depth	C	0.1	1.22
Sprocket hole	d	0.05	1.55
7"Reel outside diameter	D	2.0	178.00
7"Reel inner diameter	D1	Min.	54.4
Feed hole diameter	D2	0.5	13.00
Sprocket hole position	E	0.1	1.75
Punch hole position	F	0.1	3.50
Punch hole pitch	P	0.1	4.00
Sprocket hole pitch	P0	0.1	4.00
Embossment center	P1	0.1	2.00
Overall tape thickness	T	0.1	0.25
Tape width	W	0.3	8.00
Reel width	W1	1.0	19.50

SMD ESD PROTECTION DIODES (TUBE) SOT23 SERIES

PACKAGE

Case Code	Reel Size	MPQ (pcs)	Component Spacing (mm)	Qty. Per Box (pcs)	Inner Box L*W*H (mm)	Reel Size (mm)	Carton size L*W*H (mm)	Qty. Per Carton (pcs)	G. W (kg)
SOT-23	7"	3,000		45,000	212*207*207	178	430*430*230	180,000	6.5




DISCLAIMER

NextGen Component, Inc. reserves the right to make changes to the product(s) and or information contained herein without notice. No liability is assumed as a result of their use or application. No rights under any patent accompany the sale of any such product(s) or information

Looking for pricing, stock, or lifecycle information?

Click below to explore more details on WIN SOURCE:

 [View SM12 on WIN SOURCE](#)

 [MDD Information](#)

Optimize Your Supply Chain with WIN SOURCE Solutions

-  Global Sourcing Solution
-  Obsolete Management
-  Cost Control Management
-  Shortage Management
-  Alternative Solution
-  Excess Inventory Management