



THE DATASHEET OF ADCH-80+



Very Wideband RF Choke

ADCH-80+

50Ω 50 to 10000 MHz

Maximum Ratings

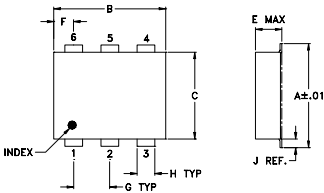
Operating Temperature	-40°C to 85°C
Storage Temperature	-55°C to 100°C
DC Current	250 mA

Permanent damage may occur if any of these limits are exceeded.

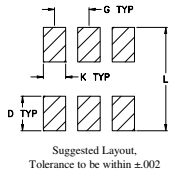
Pin Connections

RF-IN & DC	2
DC	5
NOT USED	1,3,4,6

Outline Drawing



PCB Land Pattern

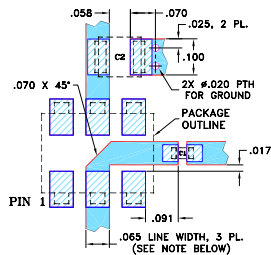


Outline Dimensions (inch/mm)

A	B	C	D	E	F	G
.272	.310	.220	.100	.112	.055	.100
6.91	7.87	5.59	2.54	2.84	1.40	2.54

H	J	K	L	wt
.030	.026	.065	.300	grams
0.76	0.66	1.65	7.62	0.20

Demo Board MCL P/N: TB-52 Suggested PCB Layout (PL-210)



CAPACITORS: C1: 6800 pF, 0603 SIZE; C2: 1.0 uF, 1311 SIZE.
 NOTES: 1. TRACE WIDTH IS SHOWN FOR ROGERS RO4350B WITH DIELECTRIC THICKNESS .030" ± .002"; COPPER: 1/2 OZ. EACH SIDE. FOR OTHER MATERIALS TRACE WIDTH MAY NEED TO BE MODIFIED.
 2. BOTTOM SIDE OF THE PCB IS CONTINUOUS GROUND PLANE.
 ■ DENOTES PCB COPPER LAYOUT WITH SMOBC (SOLDER MASK OVER BARE COPPER)
 ■ DENOTES COPPER LAND PATTERN FREE OF SOLDER MASK

Features

- low parasitic capacitance 0.1 pf typ.
- effective parallel resistance, Rch 800 ohm typ.
- aqueous washable
- protected by US Patent, 6,133,525

Applications

- biasing amplifiers
- biasing of laser diodes
- biasing of active antennas

Electrical Specifications

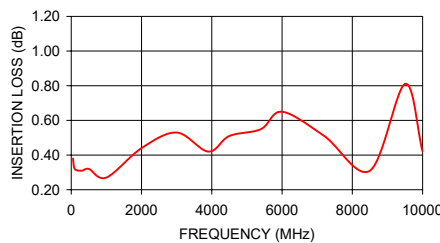
FREQ. RANGE (MHz)	INSERTION LOSS* (dB)		VSWR* (:1)		DC CURRENT (mA)	INDUCTANCE (μH) Typ.		
	Typ.	Max.	Typ.	Max.		@ 0mA	@ 50mA	@ 100mA
50-8000	0.3	1.0	1.1	1.35	100	7.0	1.8	1.0
50-10000	0.3	2.0	1.1	1.6	100	7.0	1.8	1.0

*tested with circuit shown below, Zo=50 ohms

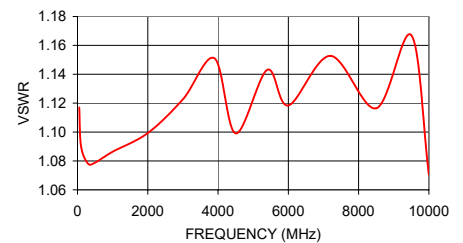
Typical Performance Data

FREQUENCY (MHz)	INSERTION LOSS (dB)	VSWR (:1)
50.00	0.38	1.12
100.00	0.32	1.09
300.00	0.31	1.08
500.00	0.32	1.08
1000.00	0.27	1.09
2000.40	0.44	1.10
3000.90	0.53	1.12
3900.00	0.42	1.15
4500.00	0.51	1.10
5400.00	0.55	1.14
6000.00	0.65	1.12
7199.80	0.51	1.15
8500.00	0.31	1.12
9500.20	0.81	1.17
10000.30	0.42	1.07

ADCH-80+
INSERTION LOSS

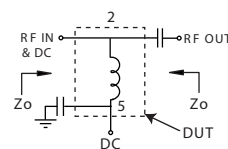


ADCH-80+
VSWR



Electrical Schematic

TEST CIRCUIT*



Notes

- Performance and quality attributes and conditions not expressly stated in this specification document are intended to be excluded and do not form a part of this specification document.
- Electrical specifications and performance data contained in this specification document are based on Mini-Circuits' applicable established test performance criteria and measurement instructions.
- The parts covered by this specification document are subject to Mini-Circuits' standard limited warranty and terms and conditions (collectively, "Standard Terms"); Purchasers of this part are entitled to the rights and benefits contained therein. For a full statement of the Standard Terms and the exclusive rights and remedies thereunder, please visit Mini-Circuits' website at www.minicircuits.com/MCLStore/terms.jsp



www.minicircuits.com P.O. Box 350166, Brooklyn, NY 11235-0003 (718) 934-4500 sales@minicircuits.com

REV. E
M158496
ED-7562/2
ADCH-80+
DJ/TD/CP/AM
200420





+RoHS Compliant
The +Suffix identifies RoHS Compliance. See our web site for RoHS Compliance methodologies and qualifications

Available Tape and Reel at no extra cost	
Reel Size	Devices/Reel
7"	10, 20, 50, 100, 200, 500
13"	1000

Looking for pricing, stock, or lifecycle information?

Click below to explore more details on WIN SOURCE:

-  [View ADCH-80+ on WIN SOURCE](#)
-  [Mini-Circuits Information](#)

Optimize Your Supply Chain with WIN SOURCE Solutions

-  Global Sourcing Solution
-  Obsolete Management
-  Cost Control Management
-  Shortage Management
-  Alternative Solution
-  Excess Inventory Management