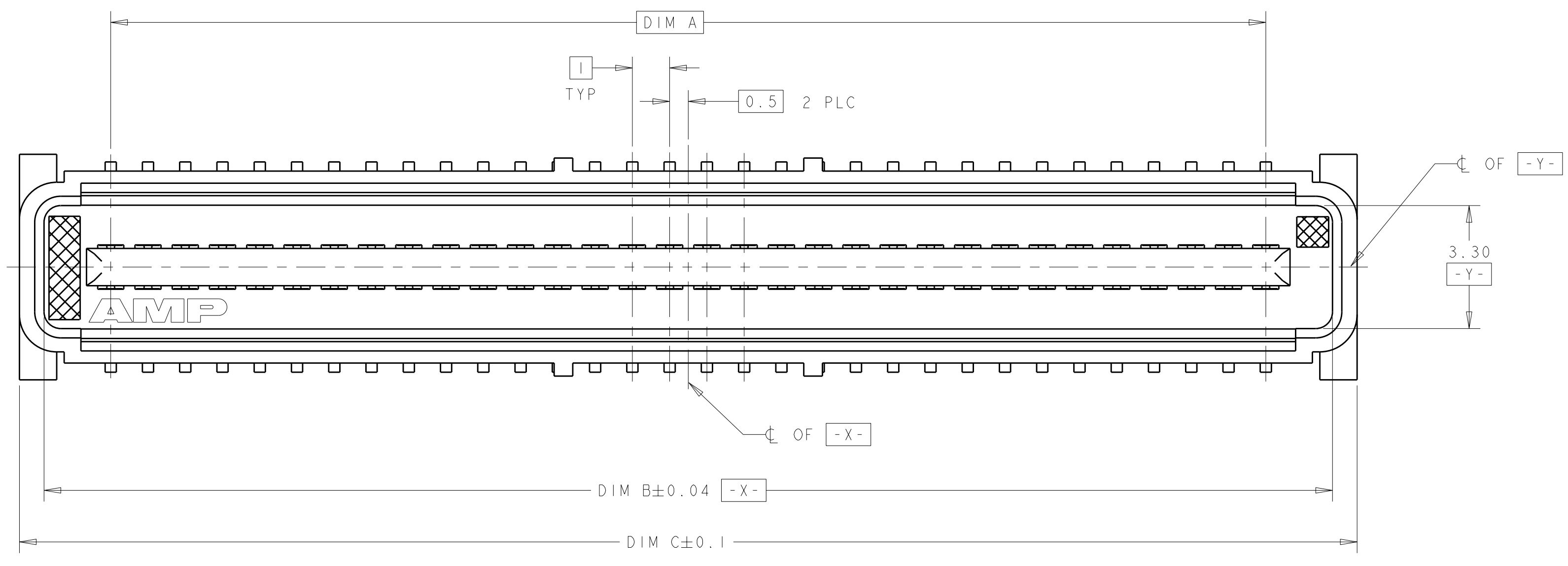
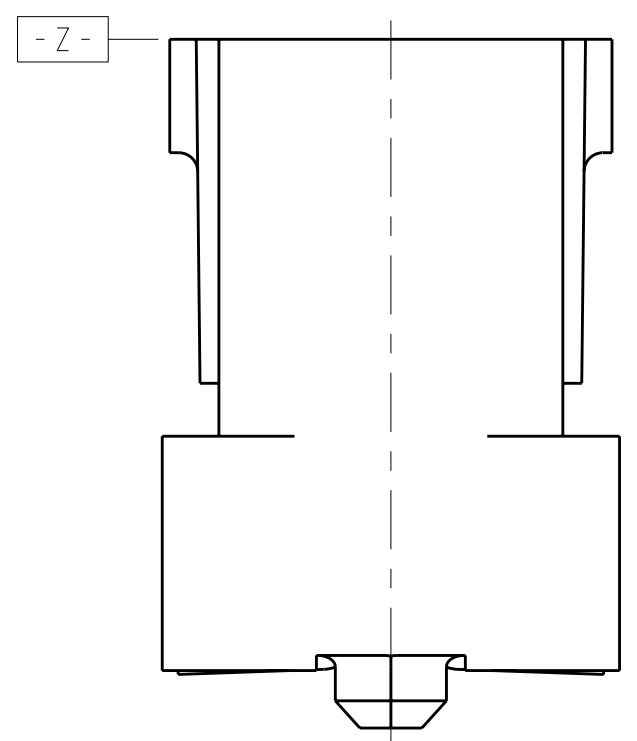
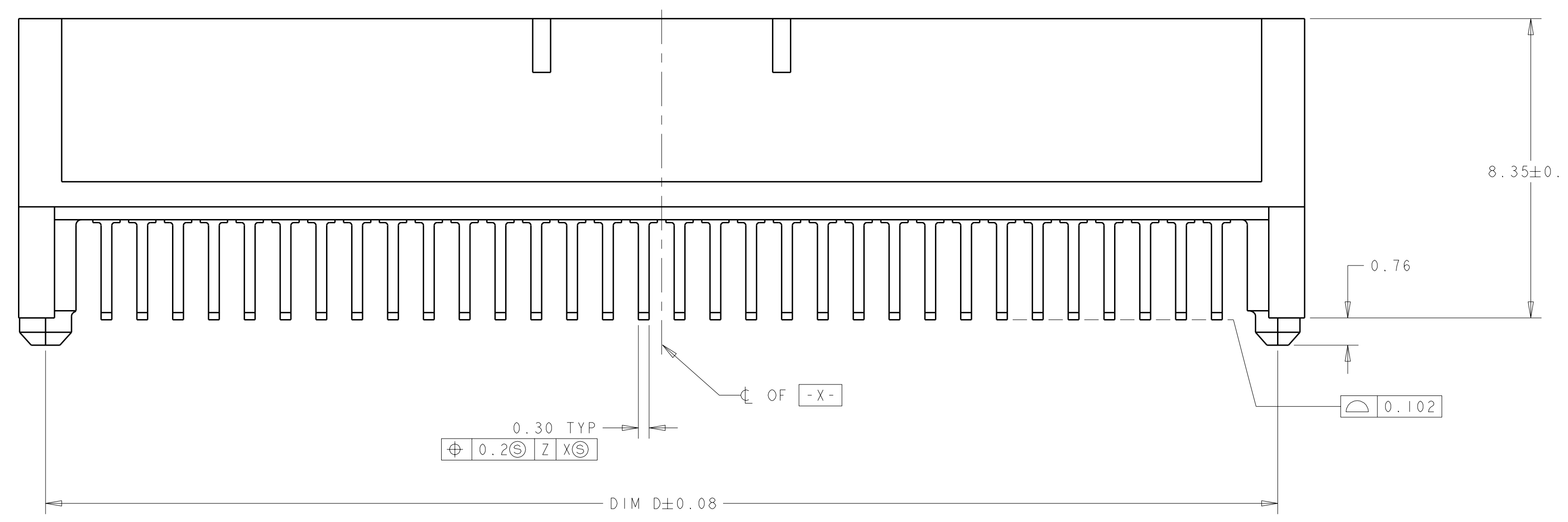


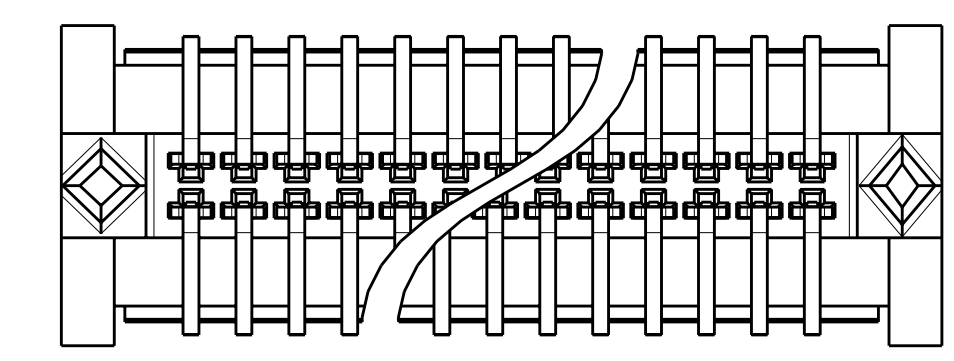
LOC	DIST	REV	DATE	BY	CHK	APPD
AD	00	A2	11MAR2011	RK	HMR	



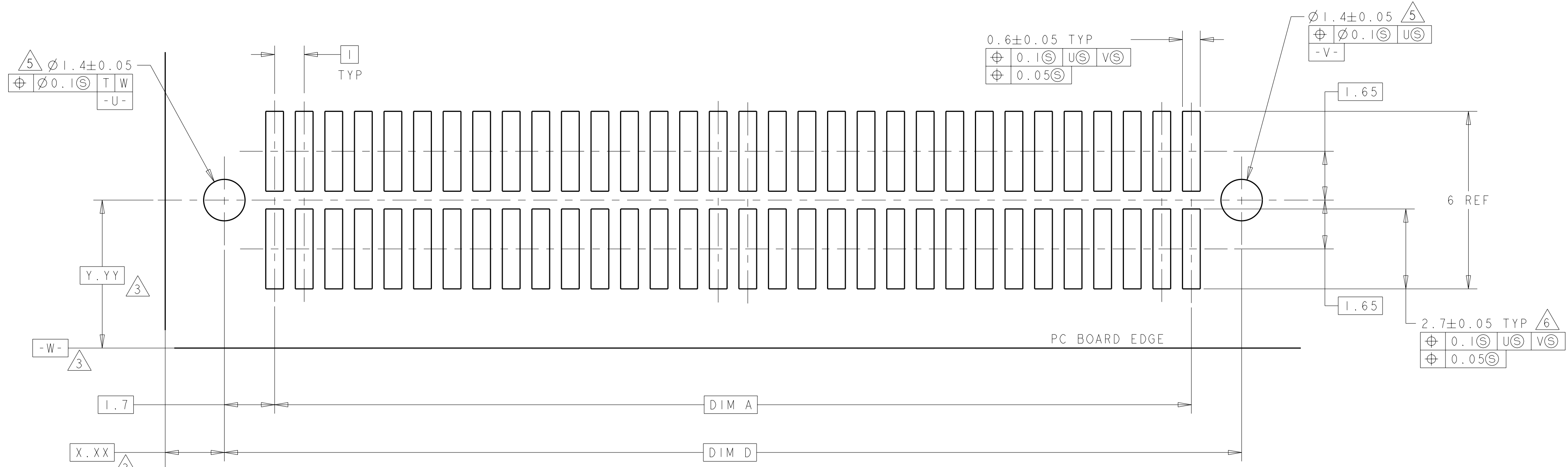
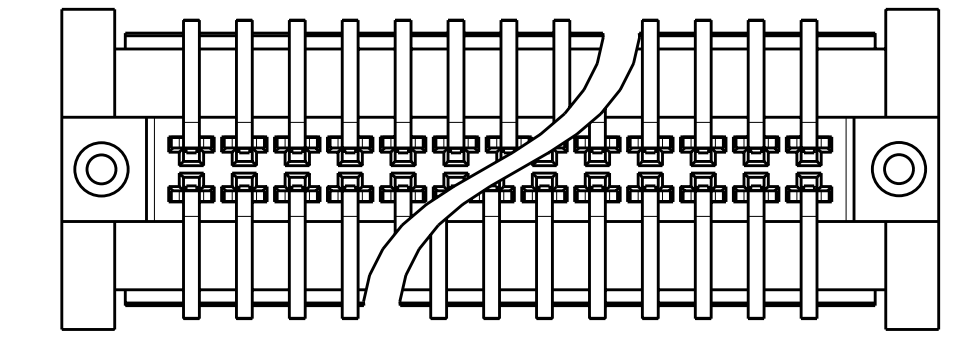
- ① HOUSING MATERIAL: LIQUID CRYSTAL POLYMER. COLOR; BLACK. CONTACT MATERIAL: PHOSPHOR BRONZE.
- ② CONTACT FINISH: NICKEL UNDERPLATE ALL OVER. MATING SURFACES PLATED TO MEET PLI PERFORMANCE REQUIREMENTS OF INDUSTRY SPECIFICATION EIA-700AAAB, SOLDER TAILS PLATED TIN.
- ③ DATUM LOCATIONS AND BASIC DIMENSIONS TO BE ESTABLISHED BY THE CUSTOMER. CONSULT AMP ENGINEERING WHEN PLACING MULTIPLE CONNECTORS ON A PC BOARD.
- ④ PACKAGED IN TAPE ON REELS PER EIA-841.
- ⑤ 1.5 MIN DIAMETER HOLE SHOULD BE USED IF USING POST STYLE "A" AND PLACING ON PCB WITH VACUUM PLACEMENT EQUIPMENT.
- ⑥ SHORTER SOLDER LANDS MAY BE USED PER EIA 700AAAB, HOWEVER 2.7 LENGTH ASSURES OPTIMUM SOLDER FILLET.
- ⑦ CONTACT FINISH: 0.00381 MINIMUM MATTE TIN PER ASTM B 545 ON SOLDER AREA, 0.00127 MINIMUM GOLD PER ASTM B 488 ON MATING AREA, BOTH OVER 0.00127 MINIMUM NICKEL PER SAE-AMS-QQ-N-290 ON ENTIRE CONTACT.
- ⑧ SQUARE AND DIAMOND SHAPED POSTS
- ⑨ ROUND SHAPED POSTS



⑧ STYLE A POSTS



⑨ STYLE B POSTS



RECOMMENDED PC BOARD LAYOUT

POST STYLE	FINISH	DIM D	DIM C	DIM B	DIM A	STACK HGTS	POS	PART NO
⑨	⑦	44.4	45.9	44.58	41	10, 12, 13, 15	84	3-5120527-2
⑨	⑦	34.4	35.9	34.58	31	10, 12, 13, 15	64	3-5120527-1
⑨	②	44.4	45.9	44.58	41	10, 12, 13, 15	84	2-5120527-2
⑨	②	34.4	35.9	34.58	31	10, 12, 13, 15	64	2-5120527-1
⑧	⑦	44.4	45.9	44.58	41	10, 12, 13, 15	84	1-5120527-2
⑧	⑦	34.4	35.9	34.58	31	10, 12, 13, 15	64	1-5120527-1
⑧	②	44.4	45.9	44.58	41	10, 12, 13, 15	84	5120527-2
⑧	②	34.4	35.9	34.58	31	10, 12, 13, 15	64	5120527-1

THIS DRAWING IS A CONTROLLED DOCUMENT.

DIMENSIONS: mm
 TOLERANCES UNLESS OTHERWISE SPECIFIED:
 9 PLC ±
 1 PLC ±0.03
 2 PLC ±0.03
 3 PLC ±0.003
 4 PLC ±
 ANGLES ±0°30'

MATERIAL: SEE TABLE
 FINISH: SEE TABLE

DWG: B. CARBO
 CHK: R. WERTZ
 APPD: R. WERTZ

30SEP04
 30SEP04
 30SEP04

NAME: PLUG ASSY, 1.0mm FH(IEEE 1386) CONNECTOR
 PRODUCT SPEC: 502-1079
 APPLICATION SPEC: 114-25045

SIZE: A100779
 CAGE CODE: C=5120527
 DRAWING NO: 5120527-2

RESTRICTED TO: -
 SCALE: 10:1
 SHEET: 1 OF 1
 REV: A2

Looking for pricing, stock, or lifecycle information?

Click below to explore more details on WIN SOURCE:

 [View 5120527-1](#) on WIN SOURCE

 [TE Connectivity](#) Information

Optimize Your Supply Chain with WIN SOURCE Solutions

-  Global Sourcing Solution
-  Obsolete Management
-  Cost Control Management
-  Shortage Management
-  Alternative Solution
-  Excess Inventory Management