



**THE DATASHEET OF  
20020004-D072A01LF**



PRODUCT NUMBER

20020004-XXXXXXLF

20020004-



PITCH

C: 3.50 mm  
D: 3.81 mm

POLES

02: 2 POLES  
03: 3 POLES  
04: 4 POLES

24: 24 POLES

PROPERTY TABLE		
FCI SERIES NAME	01-350 01-381	
PITCH (mm)	3.50 3.81	
VOLTAGE RATING (VAC)	300 300	
CURRENT RATING (A)	cULus	10 10
	VDE	10.5 10.5
APPLICABLE WIRE RANGE (AWG)	1-WIRE	16~26 16~26
	2-WIRE	20 20
WIRE CROSS SECTION (mm <sup>2</sup> )	SOLID	1.5 1.5
	STRANDED	0.5 0.5
OPENING CONTACT HOUSING(mm <sup>2</sup> )		1.5 1.5
OPENING CONTACT HOUSING(mm <sup>2</sup> )		0.75 0.75
WIRE STRIP LENGTH(mm)		1.6x2.5 1.7x2.5
TORQUE +/- 10% (N-m/Lb-in)		6~7 6~7
SCREW		0.23/2.0 0.23/2.0
WITHSTANDING VOLTAGE (kV)		M2x0.4 M2x0.4
OPERATING TEMP. (°C)	cULus	1.6 1.6
	VDE	2.5 2.5
POLES AVAILABLE		-40~+115 -40~+115
SAFETY CERTIFICATE		02~24 02~24
SAFETY CERTIFICATE		 

## NOTES:

1. MATERIALS  
1-1 HOUSING: THE  
1-2 SCREW: STEEL
2. PRODUCT SPECIFI  
3. BOXED PACKAGIN  
DETAILED PRODU
4. FCI, SAFETY CERT  
PRODUCT SURFA
5. THE PRODUCTS W  
UNION DIRECTIVE  
GS-22-008.

CODE	COLOR	AVAILABILITY
1	GREEN(RAL 6018/T)	STANDARD
2	BLACK	ON REQUEST ONLY
3	GREY(RAL 7004/P)	ON REQUEST ONLY
4	BLUE(RAL 5015/A)	ON REQUEST ONLY

mat'l. code		surface	
ltr	ecn no dr	date	ASME Y14.5
E	T10-0127 WL	080910	tolerances unless
F	T10-0147 WL	081310	angles
G	T10-0159 WL	100410	X±1°
H	T10-0187 WL	121410	dr
J	T10-0193 WL	122310	enfr
K	T11-0013 WL	040811	chr
L	T-004746 WL	072011	appd
sheet	revision	L	L
index	sheet	1	3

form: A4mmXLc

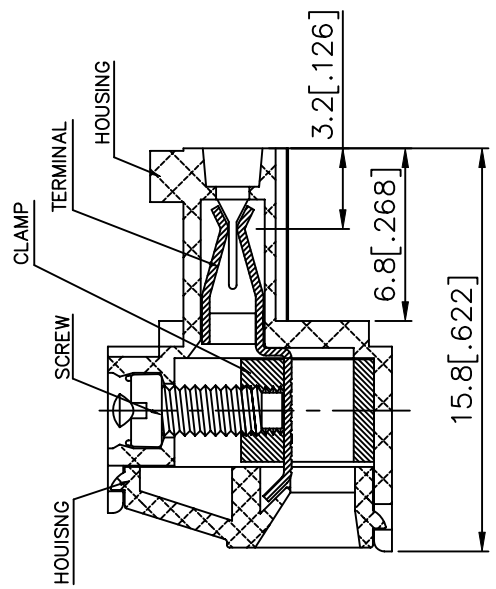
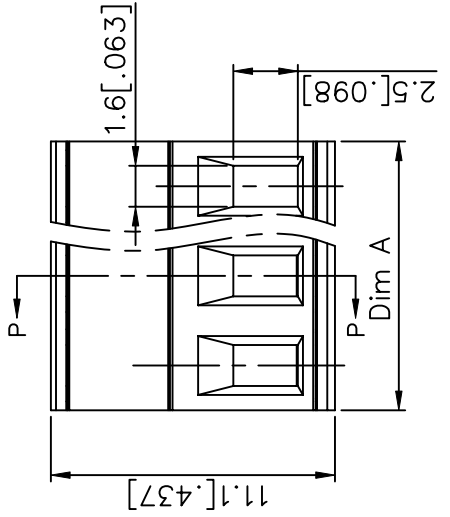
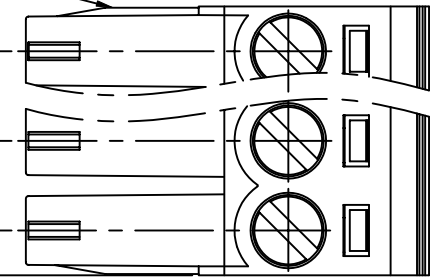
1

2

PDS: Rev

PRODUCT NUMBER	SERIES NAME	PITCH
20020004-CXXXXXXLF	01-350	3.50 mm

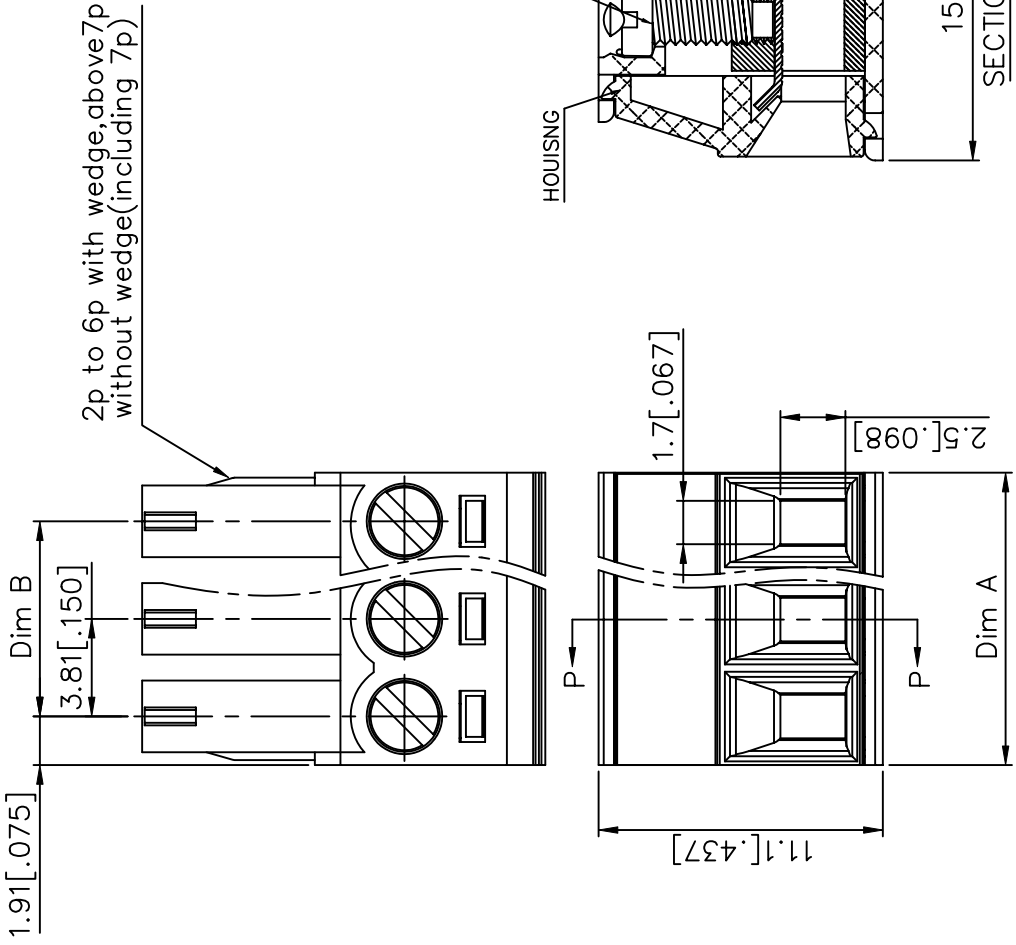
1.75[.069] Dim B  
 3.50[.138]  
 2p to 6p with wedge, above 7p  
 without wedge (including 7p)



SECTION P-P

mat'l. code		surface	tolerances unless	angles	dr	engr	chr	appd
ltr	ecn no	ASME Y14.5	AS	X.X	BEER FU	BEER FU	GARY HSIET	JOSEPH HS
L	dr			X±1°				
	date			X.XX				
sheet	revision							
index	sheet							

PRODUCT NUMBER	SERIES NAME	PITCH
20020004-DXXXXXXLF	01-381	3.81 mm





SECTION P-P

mat'l. code	tr	ecn no	dr	date	surface	tc
L					ASME Y14.5	A
					tolerances unless	
					angles	X.
					X±1°	X.XX
					dr	BEER FU
					engr	BEER FU
					chr	GARY HSIET
					appd	JOSEPH HS
sheet	revision					
index	sheet					

## Looking for pricing, stock, or lifecycle information?

Click below to explore more details on WIN SOURCE:

-  [View 20020004-D072A01LF on WIN SOURCE](#)
-  [Amphenol Anytek Information](#)

## Optimize Your Supply Chain with WIN SOURCE Solutions

-  Global Sourcing Solution
-  Obsolete Management
-  Cost Control Management
-  Shortage Management
-  Alternative Solution
-  Excess Inventory Management